

Flight Procedures Cover Page	Task Action: P-NOTAM	Task Type: IAP	Estimated Chart Date: 09/03/2026	APWS Task ID: 958A5EED8A494CEF832D518639D362A8	APWS Project ID: BD1C81F4A21C4995B43A193D3C3DD195
Procedure: RNAV (GPS) RWY 4 ORIG-D		Enroute: NO	Specialist: Johnson, Timothy		Agreement Number:
Airport ID: KCVK			Airport City: ASH FLAT		State: AR
Facility ID:	Facility Type:	Flight Inspection Remark Type:			

**Procedure Comments:**

Visibility Initiative (Garmin) - Update IAP visibility minimums IAW Order 8260.3, Chapter 3, Section 3-3. Visibility Minimums.

PROCESSED IAW TECHNICAL SUPPORT GROUP (AJF-17) MEMO DATED 07/07/2021, SUBJECT: GUIDANCE FOR PROCEDURAL CHANGES REQUIRING FLIGHT INSPECTION/VALIDATION.

CONTACT: CASEY HILL (405) 954-0624.

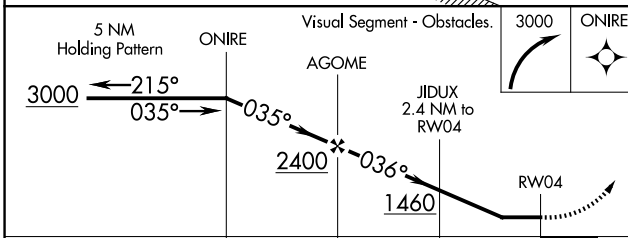
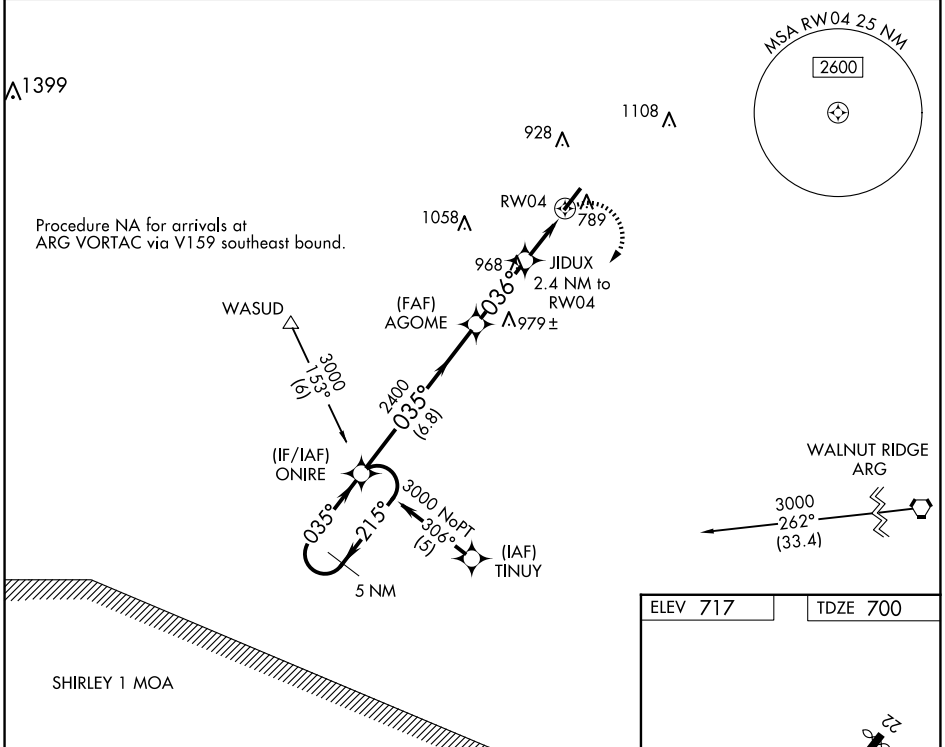


APP CRS	Rwy Idg	<b>5158</b>
<b>036°</b>	TDZE	<b>700</b>
	Apt Elev	<b>717</b>

**RNAV (GPS) RWY 4**  
SHARP COUNTY RGNL (CVK)

RNP APCH.	<p>Use Walnut Ridge altimeter setting; when not received, use Jonesboro Municipal altimeter setting and increase all MDAs 60 feet and Circling Cat C visibility ¼ SM. Rwy 4 helicopter visibility reduction below 1 SM NA. Straight-in Rwy 4 NA at night, Circling Rwy 4 NA at night.</p>	<p>MISSED APPROACH: Climbing right turn to 3000 direct ONIRE and hold.</p>
<p>▼ Use Walnut Ridge altimeter setting; when not received, use Jonesboro Municipal altimeter setting and increase all MDAs 60 feet and Circling Cat C visibility ¼ SM. Rwy 4 helicopter visibility reduction below 1 SM NA. Straight-in Rwy 4 NA at night, Circling Rwy 4 NA at night.</p>		

ARG AWOS-3PT <b>126.525</b>	MEMPHIS CENTER <b>120.075 289.4</b>	UNICOM <b>122.7 (CTAF)</b>
--------------------------------	--	-------------------------------



ELEV 717	TDZE 700
----------	----------

MIRL Rwy 4-22

SC-1, 19 FEB 2026 to 19 MAR 2026

SC-1, 19 FEB 2026 to 19 MAR 2026