

Flight Procedures Cover Page	Task Action: P-NOTAM	Task Type: IAP	Estimated Chart Date: 10/07/2021	APWS Task ID: 95992158EA6547B7905FD9E2F5317361	APWS Project ID: B425330D2C65416CBF6C85BD20C40E00
Procedure: RNAV (GPS) RWY 8 AMDT 0C		Enroute: NO	Specialist: Lafferty, James		Agreement Number:
Airport ID: KMOT			Airport City: MINOT		State: ND
Facility ID:	Facility Type:	Flight Inspection Remark Type:			

Procedure Comments:

P-NOTAM

This Cancels FDC 0/1542

Order 8260.3, chapter 2, New Circling Criteria Applied

Contact Dave Teffeteller at 202-267-5177



WAAS CH 97616 W08A	APP CRS 084°	Rwy Idg TDZE Apt Elev	5957 1712 1716
--	------------------------	-----------------------------	---

OLD

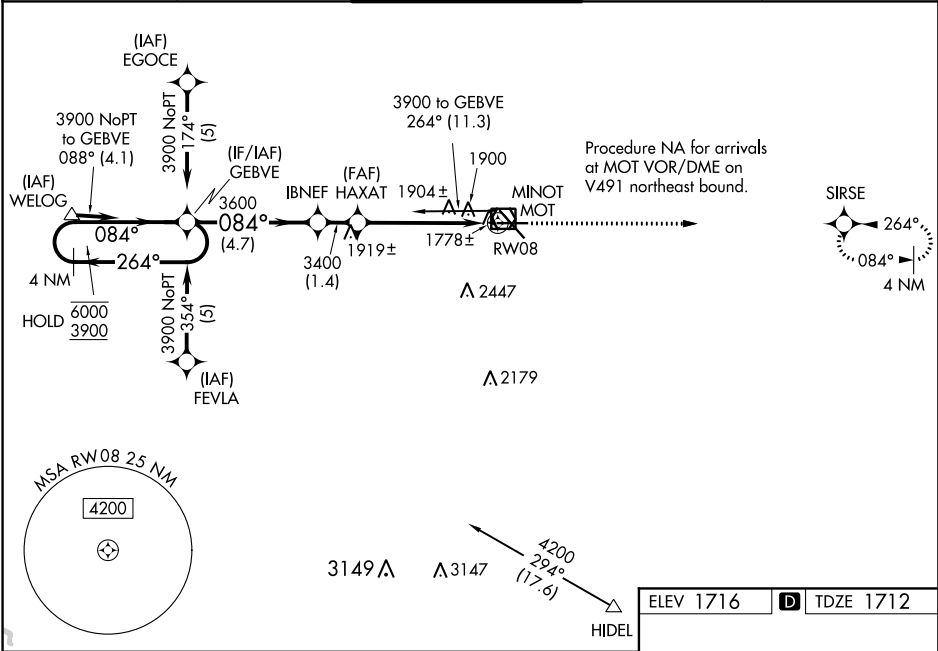
RNAV (GPS) RWY 8
MINOT INTL (MOT)

RNP APCH.

▽ Rwy 8 helicopter visibility reduction below 3/4 SM NA.
▲ For uncompensated Baro-VNAV systems, LNAV/VNAV NA below -18°C or above 54°C.

MISSED APPROACH:
Climb to 3600 direct
SIRSE and hold.

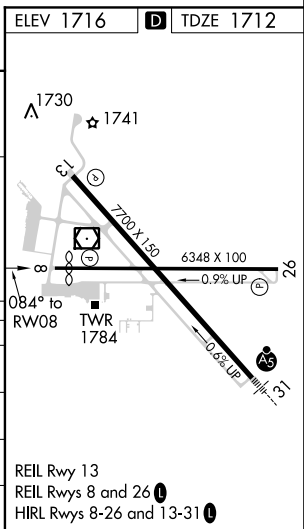
ASOS 118.725	MINOT APP CON * 119.6 363.8	MAGIC CITY TOWER * 118.2 (CTAF) 0 251.125	GND CON 121.9	UNICOM 122.95
------------------------	---------------------------------------	---	-------------------------	-------------------------



NC-1, 21 MAY 2020 to 18 JUN 2020

NC-1, 21 MAY 2020 to 18 JUN 2020

4 NM Holding Pattern		VGSI and RNAV glidepath not coincident (VGSI Angle 3.00/TCH 45).		3600 SIRSE
6000 ← 264°	3900 → 084°	IBNEF	HAXAT	*1.3 NM to RWY 08
GP 3.00° TCH 49		3600	3400	*LNAV only.
		4.7 NM	1.4 NM	3.8 NM
CATEGORY	A	B	C	D
LPV DA	1991-1 279 (300-1)			
LNAV/ VNAV DA	2218-1 3/4 506 (600-1 3/4)			
LNAV MDA	2160-1	448 (500-1)	2160-1 3/8 448 (500-1 3/8)	2160-1 1/2 448 (500-1 1/2)
CIRCLING	2200-1	484 (500-1)	2280-1 1/2 564 (600-1 1/2)	2280-2 564 (600-2)





AIRPORT ID	KMOT
AIRPORT NAME	MINOT INTL
CITY	MINOT
STATE	NORTH DAKOTA
PROCEDURE ID	RNAV GPS RWY 8
AMENDMENT #	ORIG
CHART DATE	10-7-21
SCALE	1:100,000
SEGMENT	CIRCLING

**Circling CAT A WATER TOWER (1900)
38-000120**

**Circling CAT C/D TOWER (2447)
38-000123**

**Circling CAT B TOWER (1928)
38-022571**

