

Flight Procedures Cover Page	Task Action: FLIGHT CHECK	Task Type: IAP	Estimated Chart Date: 12/31/2020	APWS Task ID: 95E56FBD0D844CEBA5F09CD336EC2FD9	APWS Project ID: 736482567ED8436FB766CD3B9B959264
Procedure: RNAV (GPS) RWY 18L AMDT 0A		Enroute: NO	Specialist: Christensen, Richard		Agreement Number:
Airport ID: KMDH	Airport Name: SOUTHERN ILLINOIS		Airport City: CARBONDALE/MURPHYSBORO		State: IL
Facility ID:	Facility Type:	Flight Inspection Remark Type: New FC Slot			

Procedure Comments:

PROCESSED IAW AIRCRAFT OPERATIONS GROUP (AJF-1000) MEMO, DATED JUNE 4, 2020, SUBJECT: FLIGHT INSPECTION OF NEW CONTROLLING OBSTACLES.

NEW CONTROLLING OBSTACLE; CHART FAS OBST: 550 TREE 374944N/0891430W.
CIRCLING UPDATED TO NEW CRITERIA. NEW CIRCLING CONTROLLERS.

ACTIVE DATA USED FOR RUNWAY AND AIRPORT.

CANCEL NOTAM FDC 9/0885 UPON PUBLICATION.

CONTACT WARDELL HENNING: 405-954-9954

Digitally signed by

JON DENTON

Feb 09, 2021

Digitally signed by

WARDELL HENNING

Nov 03, 2020



FIPC BASIC FORM

PROCEDURE: RNAV (GPS) RWY 18L AMDT 0A		AIRPORT NAME: SOUTHERN ILLINOIS		AIRPORT ID: KMDH	SPECIAL CONTROL NO: BG-11-059-20
FAC ID: KMDH18L		CITY: CARBONDALE/MURPHYSBORO		ST: IL	ORIG CHART DATE: 04/22/2021
DFL TYPE: PROC/V	THIRD PARTY: <input type="checkbox"/> YES	EST. TIME ON SITE: 0.5	REIMB. NUMBER:	PTS TASK ID:	

PREFLIGHT NOTES

REVIEWER:	DATE:
COMMENTS:	CHECK ONE: <input type="checkbox"/> FLT CK REQ <input type="checkbox"/> NFCR <input type="checkbox"/> REJECT
	<input type="checkbox"/> YES <input type="checkbox"/> NO
	CPV COMPLETE?

PROCEDURE RESULTS

INSPECTION DATE: 02/06/2021	CREW #: VN409	N #: N84	INSTRUMENT PROCEDURE STATUS: <input checked="" type="checkbox"/> SAT <input type="checkbox"/> SAT W/CHANGES <input type="checkbox"/> UNSAT	ARINC CODING: <input type="checkbox"/> SAT <input type="checkbox"/> SAT/GOLD <input type="checkbox"/> UNSAT
FLIGHT INSPECTOR SIGNATURE: patrick murray @ 02/06/2021 17:36		PRINTED NAME: MURRAY, PATRICK MICHAEL		NOTAM INITIATED? <input type="checkbox"/> YES <input checked="" type="checkbox"/> NO

FLIGHT INSPECTOR REMARKS:
Special Number: BG-11-059-20. Southern Illinois, Carbondale/Murphysboro, IL, RNAV (GPS) RWY 18L, Amdt.0A, complete SAT.

IN-FLIGHT OBSTACLE REPORT

OBSTRUCTION ID #:	COORDINATES OR LOCATION:	GNSS ALTITUDE (MSL):	BAROMETRIC ALTITUDE (MSL):	HEIGHT ABOVE GROUND LEVEL:
--------------------------	---------------------------------	-----------------------------	-----------------------------------	-----------------------------------

OLD

CARBONDALE-MURPHYSBORO, ILLINOIS

AL-5091 (FAA)

19115

APP CRS	Rwy Idg	6506
182°	TDZE	407
	Apt Elev	411

RNAV (GPS) RWY 18L

SOUTHERN ILLINOIS (MDH)

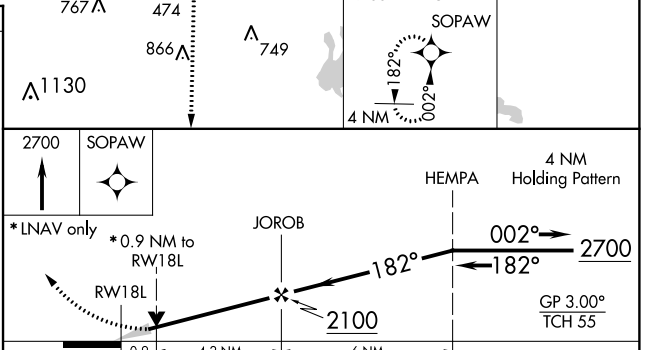
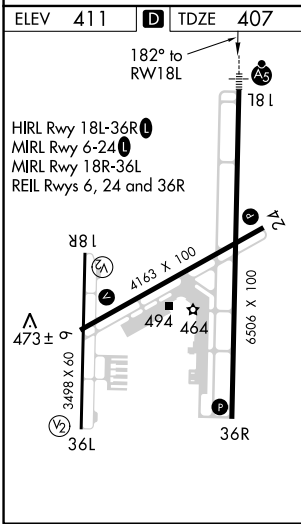
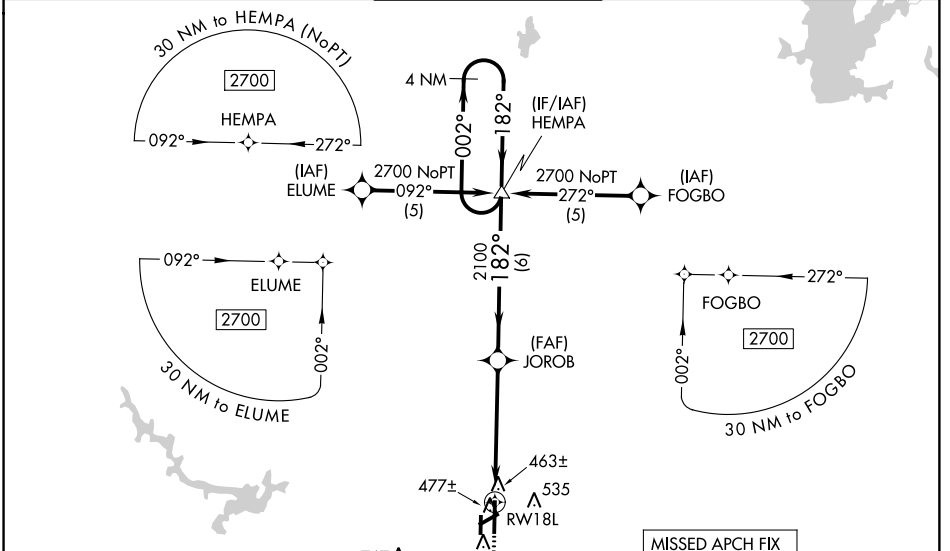
▼ Inoperative table does not apply to LNAV Cat D. For uncompensated Baro-VNAV systems, LNAV/VNAV NA below -15°C (5°F) or above 48°C (118°F)

▲ DME/DME RNP-0.3 NA. When local altimeter setting not received, use Williamson Co Rgnl altimeter setting and increase all DA 36 feet and all MDA 40 feet and increase LNAV/VNAV Cat A, B, C visibility ¼ mile. For inoperative MALSRS, increase LNAV/VNAV Cat D visibility to 1 mile. Baro-VNAV NA when using Williamson Co Rgnl altimeter setting. VDP NA when using Williamson Co Rgnl altimeter setting. For inoperative MALSRS when using Williamson Co Rgnl altimeter setting, increase LNAV Cat D visibility to 1¼ mile.

MALSRS

MISSED APPROACH:
Climb to 2700 direct SOPAW and hold.

ATIS 119.725	KANSAS CITY CENTER 127.475 346.275	CARBONDALE TOWER ★ 125.35 (CTAF) 0 322.4	GND CON 121.8	UNICOM 122.95
------------------------	--	--	-------------------------	-------------------------



CATEGORY	A	B	C	D
LNAV/VNAV DA	726-½ 319 (400-½)			726-¾ 319 (400-¾)
LNAV MDA	740-½ 333 (400-½)			740-1 333 (400-1)
CIRCLING	900-1 489 (500-1)		900-1½ 489 (500-1½)	980-2 569 (600-2)

CARBONDALE-MURPHYSBORO, ILLINOIS
Orig 08APR10

37°47'N-89°15'W

RNAV (GPS) RWY 18L

EC-3, 23 APR 2020 to 21 MAY 2020

EC-3, 23 APR 2020 to 21 MAY 2020

CARBONDALE-MURPHYSBORO, ILLINOIS

AL-5091 (FAA)

FIG

APP CRS	Rwy Idg	6506
182°	TDZE	407
	Apt Elev	411

RNAV (GPS) RWY 18L

SOUTHERN ILLINOIS (MDH)

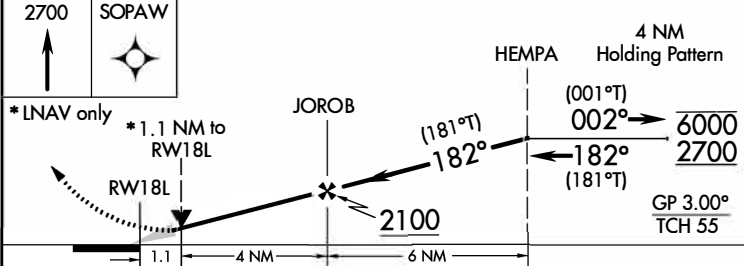
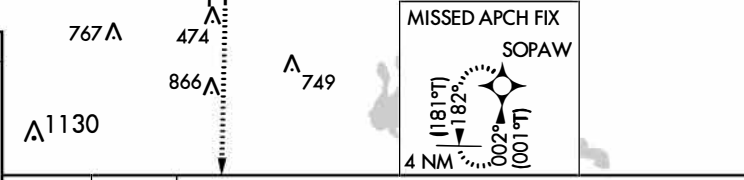
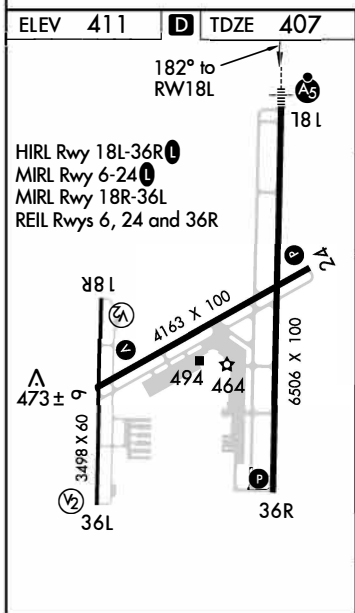
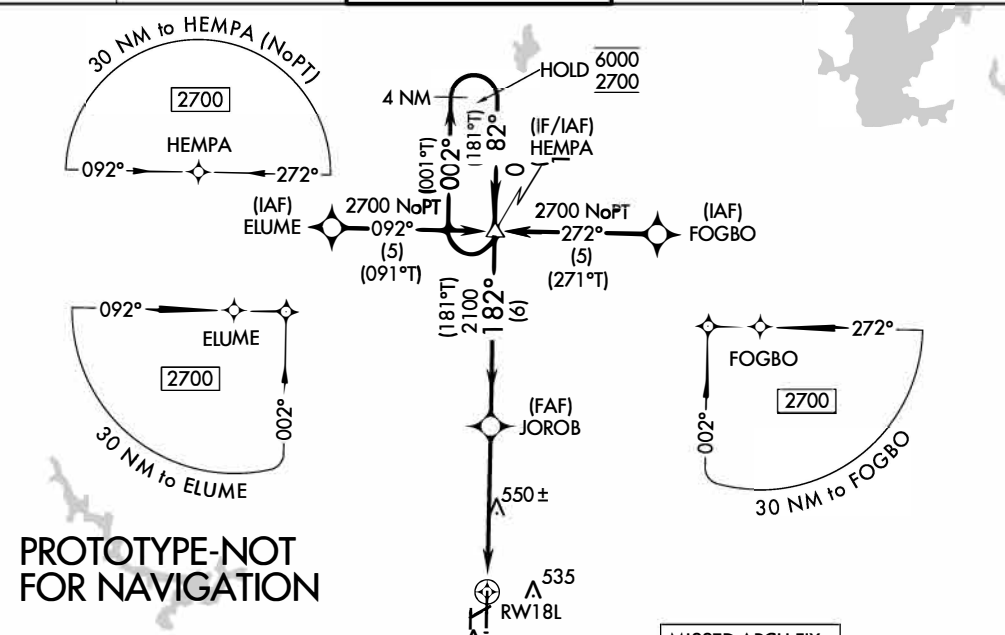
RNP APCH.

⚠ Circling Rwy 6, 36L NA at night.
 For uncompensated Baro-VNAV systems, LNAV/VNAV NA below -15°C or above 54°C.
 For inop ALS, increase LNAV/VNAV and LNAV Cat D visibility to 1½ SM.



MISSED APPROACH:
 Climb to 2700 direct SOPAW and hold.

ATIS 119.725	KANSAS CITY CENTER 127.475 346.275	CARBONDALE TOWER ★ 125.35 (CTAF) 322.4	GND CON 121.8	UNICOM 122.95
------------------------	--	--	-------------------------	-------------------------



CATEGORY	A	B	C	D
LNAV/VNAV DA	804-5/8 397 (400-5/8)		804-5/8 397 (400-5/8)	
LNAV MDA	800-1/2 393 (400-1/2)		800-5/8 393 (400-5/8)	
CIRCLING	900-1 489 (500-1)	920-1 509 (600-1)	1180-2 1/4 769 (800-2 1/4)	1180-2 1/2 769 (800-2 1/2)

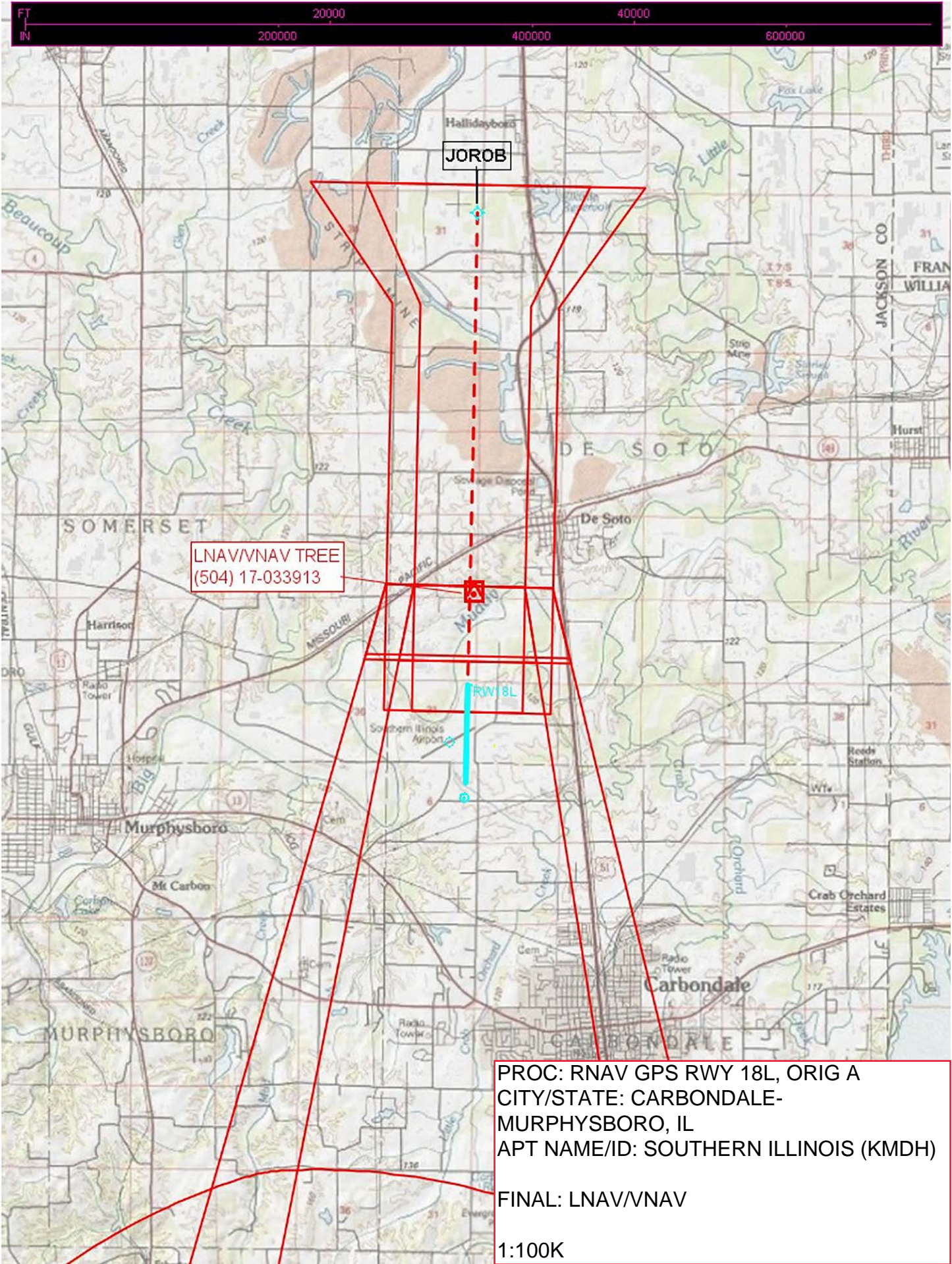
AUTOMATED AL-5091 RNAV (GPS) RWY 18L

EC-3
 21MAY2020
 COMPLIER: SQ
 REVIEWER:
 DBL CHKR:
 EFF: FIG

CARBONDALE-MURPHYSBORO, ILLINOIS
 Orig A FIG

37°47'N-89°15'W

SOUTHERN ILLINOIS (MDH)
RNAV (GPS) RWY 18L

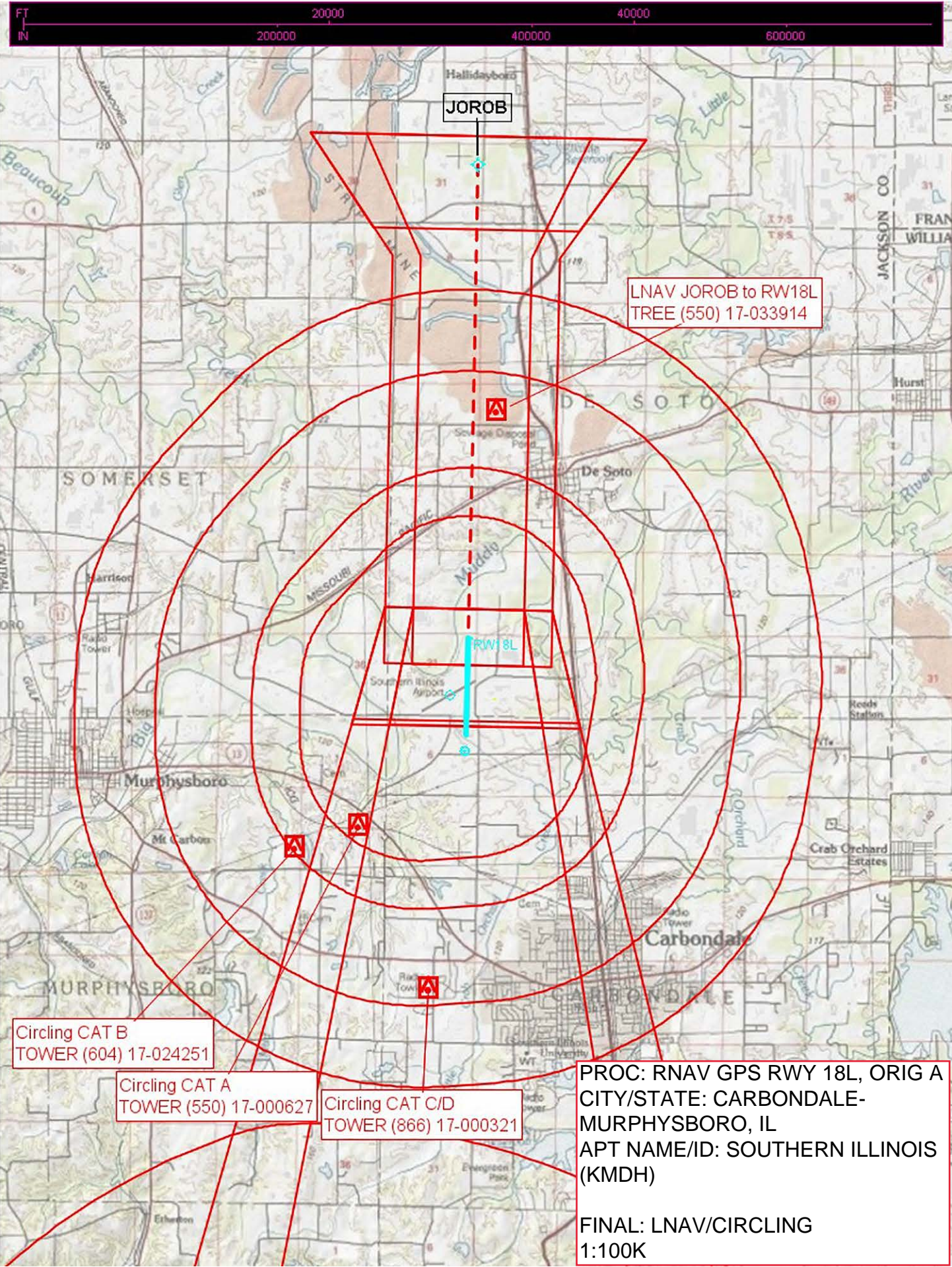


LNAV/VNAV TREE
(504) 17-033913

JOROB

RWY 18L

PROC: RNAV GPS RWY 18L, ORIG A
CITY/STATE: CARBONDALE-
MURPHYSBORO, IL
APT NAME/ID: SOUTHERN ILLINOIS (KMDH)
FINAL: LNAV/VNAV
1:100K



LNAV JOROB to RW18L
TREE (550) 17-033914

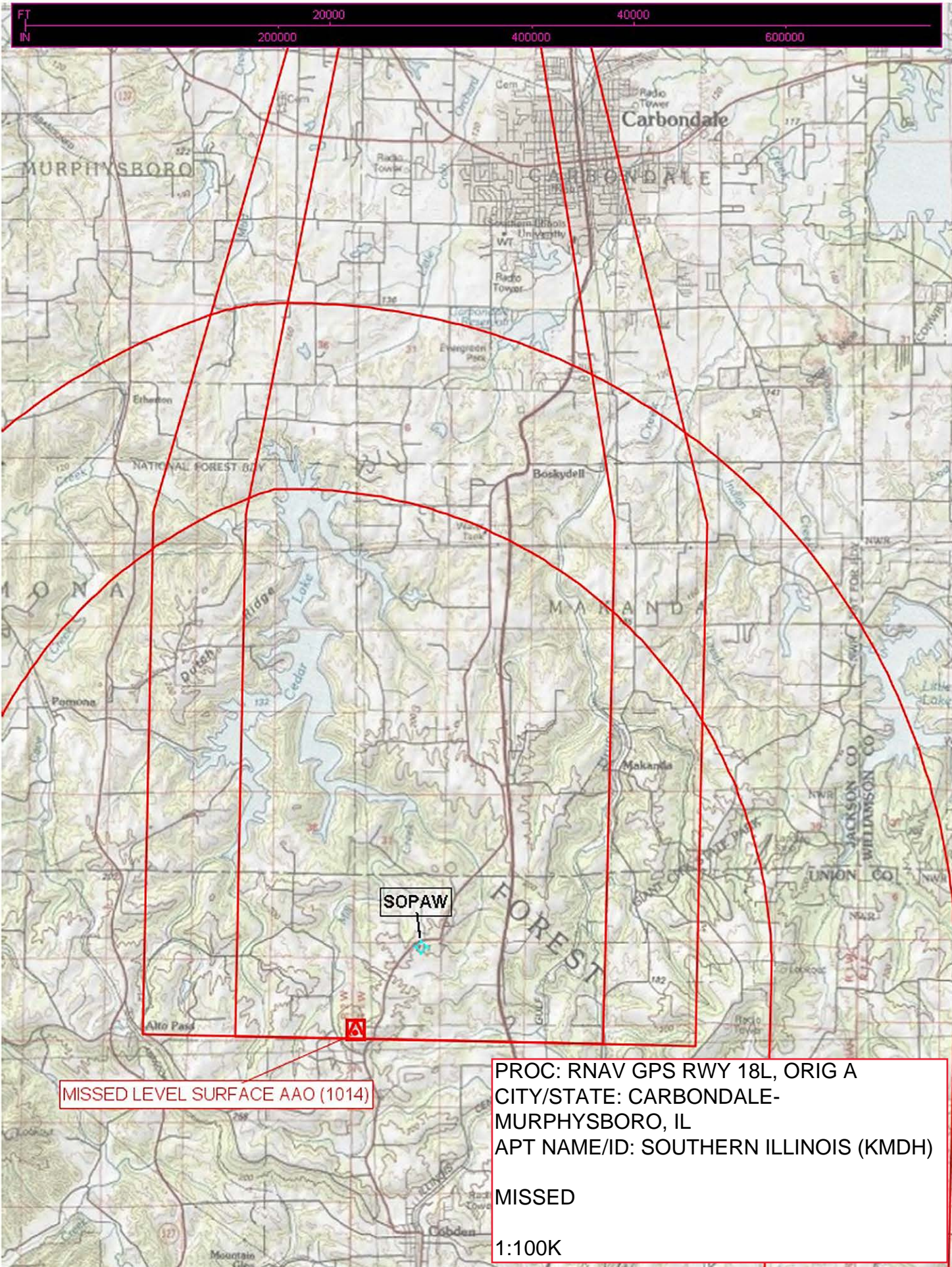
Circling CAT B
TOWER (604) 17-024251

Circling CAT A
TOWER (550) 17-000627

Circling CAT C/D
TOWER (866) 17-000321

PROC: RNAV GPS RWY 18L, ORIG A
CITY/STATE: CARBONDALE-
MURPHYSBORO, IL
APT NAME/ID: SOUTHERN ILLINOIS
(KMDH)

FINAL: LNAV/CIRCLING
1:100K



MISSED LEVEL SURFACE AAO (1014)

PROC: RNAV GPS RWY 18L, ORIG A
CITY/STATE: CARBONDALE-
MURPHYSBORO, IL
APT NAME/ID: SOUTHERN ILLINOIS (KMDH)
MISSED
1:100K