

Flight Procedures Cover Page	Task Action: Abbreviated Amendment	Task Type: IAP	Estimated Chart Date: 03/19/2026	APWS Task ID: 9784AC4D2555468793F1B93EC5ABB3AB	APWS Project ID: 16B12DD8113C488AAE8709B5497BD5C7
Procedure: ILS OR LOC RWY 22L AMDT 5F		Enroute: NO	Specialist: Hardison, Dustin		Agreement Number:
Airport ID: KLFT			Airport City: LAFAYETTE		State: LA
Facility ID: LFT	Facility Type: ILS	Flight Inspection Remark Type:			

Procedure Comments:

CURRENT AIRNAV DATA USED.
 Processed IAW Technical Support Group (AJF-17) Memo dated 07/07/2021 Guidance for Procedural Changes Requiring Flight Inspection/Validation.
 Contact Rake McGraw AJV-A422
 (405)597-8711



LOC/DME I-LFT 109.5 Chan 32	APP CRS 216°	Rwy Ldg TDZE 38 Apt Elev 42	7659
---	------------------------	---	-------------

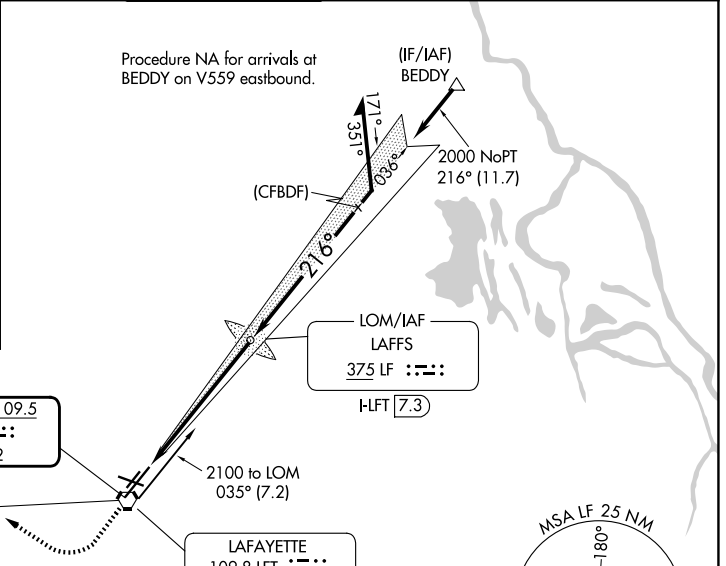
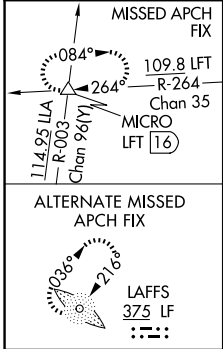
OLD

ILS or LOC RWY 22L
LAFAYETTE RGNL/PAUL FOURNET FLD (L.F.T)

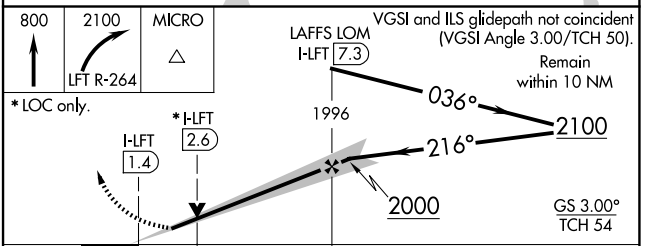
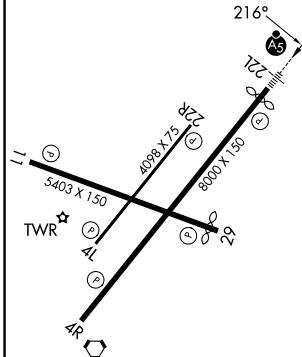
⚠ VDP NA with Acadiana Rgnl altimeter setting. When local altimeter setting not received, use Acadiana Rgnl altimeter setting and increase DA to 267 feet; increase all MDA 40 feet and S-LOC 22L visibility Cat C/D to RVR 5000 and Circling visibility Cat C/D ¼ SM. For inop MALSR when using Acadiana Rgnl altimeter setting, increase S-LOC 22L Cat C and D visibility to 1 ½ mile.
**RVR 1800 authorized with use of FD or AP or HUD to DA (NA when using Acadiana Rgnl altimeter setting).

MALS
A5
MISSED APPROACH:
Climb to 800 then climbing right turn to 2100 on LFT VORTAC R-264 to MICRO INT/ LFT 16 DME and hold.

ATIS 134.05	LAFAYETTE APP CON * 121.1 363.0	LAFAYETTE TOWER * 118.5 (CTAF) 257.8	GND CON 121.8	UNICOM 122.95
-----------------------	---	--	-------------------------	-------------------------



ELEV 42	D	TDZE 38
---------	----------	---------



CATEGORY	A	B	C	D
S-ILS 22L**	480/24	238/24	200 (200-½)	442 (500-¾)
S-LOC 22L	540-1	580-1	480/45	442 (500-¾)
CIRCLING	498 (500-1)	538 (600-1)	700-1¾ 658 (700-1¾)	700-2 658 (700-2)

SC-4, 30 OCT 2025 to 27 NOV 2025

SC-4, 30 OCT 2025 to 27 NOV 2025