

Flight Procedures Cover Page	Task Action: Abbreviated Amendment	Task Type: SID	Estimated Chart Date: 05/14/2026	APWS Task ID: 982287D6D356470AB1A83246F5BBC75B	APWS Project ID: 5C20521C38E74618901CA3EF973FD8CB
Procedure: ICONS SIX (RNAV)		Enroute: YES	Specialist: Clark, Jacob		Agreement Number:
Airport ID: KCLT			Airport City: CHARLOTTE		State: NC
Facility ID:	Facility Type:	Flight Inspection Remark Type:			

**Procedure Comments:**

ABBREVIATED AMENDMENT USING ACTIVE AND PENDING AIRPORT DATA FOR THE 5/14/2026 CHART CYCLE.

PROCESSED IAW TECHNICAL SUPPORT GROUP (AJF-17) MEMO DATED 07/07/2021, SUBJECT: GUIDANCE FOR PROCEDURAL CHANGES REQUIRING FLIGHT INSPECTION/VALIDATION.

RUNWAY RENUMBERING CHANGING RUNWAY 18R/36L TO 19R/1L.

CONTACT CASIMIR TABAKA: 405-954-7931



(ICONS5.ICONS) 25051

AL-78 (FAA)

CHARLOTTE/DOUGLAS INTL (CLT)

CHARLOTTE, NORTH CAROLINA

# ICONS FIVE DEPARTURE (RNAV)

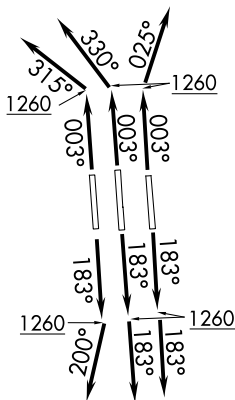
CHARLOTTE DEP CON  
 120.5 257.2 (Rwys 36L/C)  
 124.0 307.8 (Rwys 18L/C/R, 36R)  
 D-ATIS DEP  
 132.1  
 CLNC DEL  
 127.15 348.6  
 CPDLC  
 GND CON  
 121.8 348.6 (WEST)  
 121.9 348.6 (EAST)  
 CHARLOTTE TOWER  
 118.1 257.8 (Rwys 18L-36R, 5-23)  
 126.4 257.8 (Rwy 18C-36C)  
 133.35 257.8 (Rwy 18R-36L)

RNAV - 1 DME/DME/IRU or GPS.

RADAR required.

**TOP ALTITUDE:  
8000**

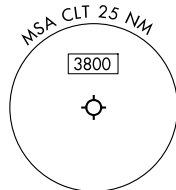
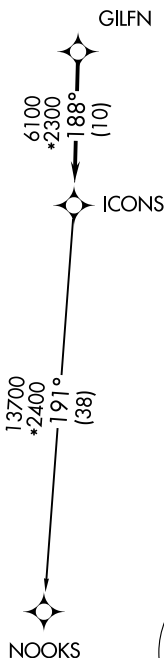
**OLD**



### TAKEOFF MINIMUMS

Rwys 18L/C/R, 36C/R: Standard with minimum climb of 500' per NM to 1260.  
 Rwy 36L: Standard with minimum climb of 500' per NM to 1400.

- NOTE: For turbo jets only.
- NOTE: If unable to accept climb rates, advise ATC on initial contact.
- NOTE: Transponder code will be issued via PDC or Charlotte CLNC DEL.
- NOTE: Accelerate to 250K, if unable advise ATC. Upon reaching 10000 MSL, accelerate to and maintain 280K, if unable advise ATC.



(CONTINUED ON FOLLOWING PAGE)

NOTE: Chart not to scale.

# ICONS FIVE DEPARTURE (RNAV)

(ICONS5.ICONS) 21MAR24

CHARLOTTE, NORTH CAROLINA  
CHARLOTTE/DOUGLAS INTL (CLT)

SE-2, 02 OCT 2025 to 30 OCT 2025

SE-2, 02 OCT 2025 to 30 OCT 2025

# ICONS FIVE DEPARTURE (RNAV)



## DEPARTURE ROUTE DESCRIPTION

SEE ADDITIONAL REQUIREMENTS ON AAUP

TAKEOFF RUNWAYS 18L/C: Climb on heading 183° to 1260, then on heading 183° or as assigned by ATC on RADAR vectors to GILFN, thence. . . .

TAKEOFF RUNWAY 18R: Climb on heading 183° to 1260, then on heading 200° or as assigned by ATC on RADAR vectors to GILFN, thence. . . .

TAKEOFF RUNWAY 36L: Climb on heading 003° to 1260, then on heading 315° or as assigned by ATC on RADAR vectors to GILFN, thence. . . .

TAKEOFF RUNWAY 36C: Climb on heading 003° to 1260, then on heading 330° or as assigned by ATC on RADAR vectors to GILFN, thence. . . .

TAKEOFF RUNWAY 36R: Climb on heading 003° to 1260, then on heading 025° or as assigned by ATC on RADAR vectors to GILFN, thence. . . .

. . . .on track 188° to ICONS, then on NOOKS transition. Maintain 8000.

Expect clearance to filed altitude within 10 minutes after departure.

### NOOKS TRANSITION (ICONS5.NOOKS)

OLD

SE-2, 02 OCT 2025 to 30 OCT 2025

SE-2, 02 OCT 2025 to 30 OCT 2025