

| | | | | | |
|-----------------------------------|---------------------------|--------------------------------|-------------------------------------|---|--|
| Flight Procedures Cover Page | Task Action: P-NOTAM | Task Type: IAP | Estimated Chart Date: 09/03/2026 | APWS Task ID: 982E16C6F104466BBD707DF9D197D927 | APWS Project ID: 902B555A0F6F4E0E9AC486A425CF794C |
| Procedure: VOR RWY 31 AMDT 16C | | Enroute: NO | Specialist: Johnson, Timothy | | Agreement Number: |
| Airport ID: KLNS | | | Airport City: LANCASTER | | State: PA |
| Facility ID: LRP | Facility Type: VOR_DME | Flight Inspection Remark Type: | | | |

Procedure Comments:

Visibility Initiative (Garmin) - Update IAP visibility minimums IAW Order 8260.3, Chapter 3, Section 3-3. Visibility Minimums.

PROCESSED IAW TECHNICAL SUPPORT GROUP (AJF-17) MEMO DATED 07/07/2021, SUBJECT: GUIDANCE FOR PROCEDURAL CHANGES REQUIRING FLIGHT INSPECTION/VALIDATION.

CONTACT: CASEY HILL (405) 954-0624.



| | | |
|--|------------------------|---|
| VOR/DME LRP 117.3 Chan 120 | APP CRS 319° | Rwy Ldg 4102 TDZE 403 Apt Elev 403 |
|--|------------------------|---|

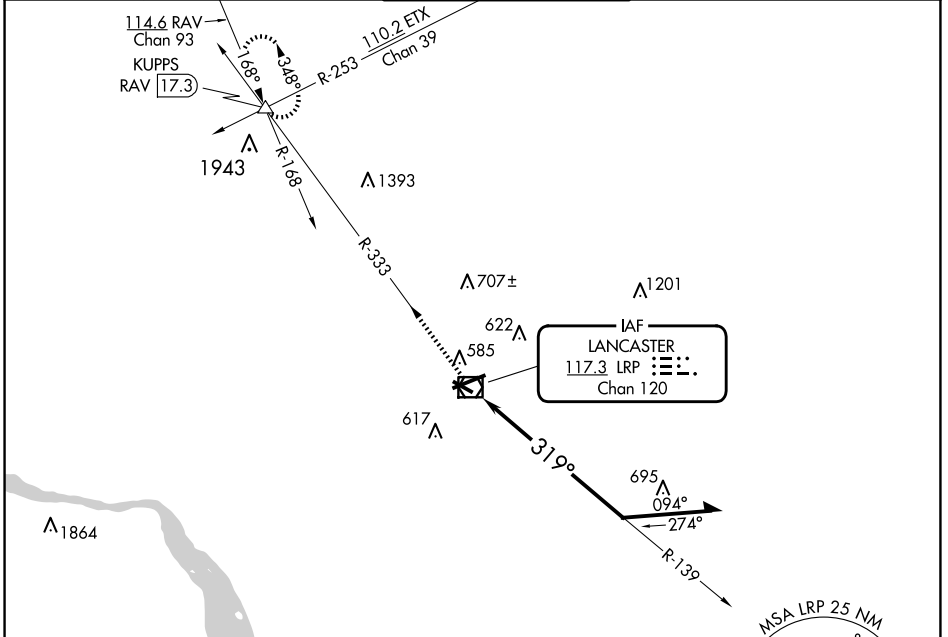
VOR RWY 31

LANCASTER (LNS)

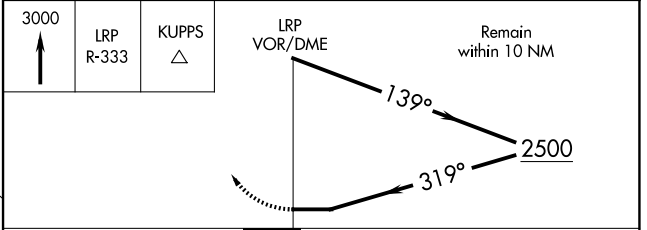
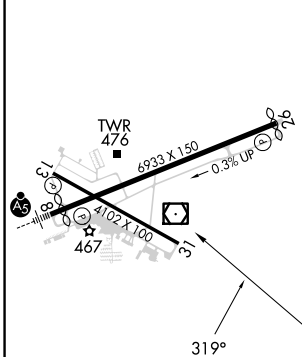
Night landing: Rwy 13, 31 NA.
Helicopter visibility reduction below 1 SM NA.

MISSED APPROACH: Climb to 3000 via LRP VOR/DME R-333 to KUPPS INT/RAV 17.3 DME and hold.

| | | | | |
|------------------------|---|---|-------------------------|-------------------------|
| ATIS 125.675 | HARRISBURG APP CON 126.45 281.525 | LANCASTER TOWER★ 120.9 (CTAF) 251.1 | GND CON 121.8 | UNICOM 122.95 |
|------------------------|---|---|-------------------------|-------------------------|



| | | |
|----------|----------|----------|
| ELEV 403 | D | TDZE 403 |
|----------|----------|----------|



| CATEGORY | A | B | C | D |
|----------|--------|-------------|-------------------------|-------------------------|
| S-31 | 1060-1 | 657 (700-1) | 1060-1¾ 657 (700-1¾) | 1060-2 657 (700-2) |
| CIRCLING | 1060-1 | 657 (700-1) | 1060-1¾ 657 (700-1¾) | 1080-2¼ 677 (700-2¼) |

- REIL Rwy 31
- HIRL Rwy 8-26
- MIRL Rwy 13-31

NE-4, 19 MAR 2026 to 16 APR 2026

NE-4, 19 MAR 2026 to 16 APR 2026