

DME DME Assessment Results for BLFRG3 path DSIDE_OXISE

Results Summary

Flyability:	Completed
DME/DME:	Completed - No Critical DMEs
Name:	Mark CTR Thompson
Project File:	C:\Users\Mark CTR Thompson\OneDrive - Federal Aviation Administration\Desktop\RNAV Projects\RNAV Projects 2025\TPA.SRQ STARS_250417\KTPA BLFRG3 (RNAV) STAR\DME\KTPA BLFRG3 (RNAV) STAR DME 240710.tgs
Output File:	C:\Users\Mark CTR Thompson\OneDrive - Federal Aviation Administration\Desktop\RNAV Projects\RNAV Projects 2025\TPA.SRQ STARS_250417\KTPA BLFRG3 (RNAV) STAR\DME\KTPA [IFPA] BLFRG3 20240710_0843 EDT\DSIDE_OXISE\KTPA BLFRG3 RNAV STAR DSIDE OXISE 20240710_0843 EDT.pdf
Procedure Name:	BLFRG3
Software: DmeDmePlugin:	7.3.2
Date/Time:	07/10/2024 08:43 EDT
Databases:	MITRE 3DEP 3 arcsec

Failures

No Failures

Warnings

No Warnings

Informational

No Informational

Notes For Flight Check

None

Flight Plan

Name	Type	Lat/Lon	Altitude (ft)	VNAV Mode	Ground Speed (kts)	Turn Type	Leg Type
DSIDE	WP	N27° 26' 30.06", W082° 08' 54.62"	4000	VNAV	200	FLY_BY	TF
OXISE	WP	N27° 32' 08.28", W082° 15' 03.25"	4000	VNAV	200	FLY_OVER	TF

Flyability

Flight Type:	RNAV_STAR
Selected Airport:	KTPA [IFPA]
Climb Gradient:	None assigned
Speeds:	200 Ground Speed to 11000 FT
	240 Ground Speed to 18000 FT
	260 Ground Speed to 24000 FT
	340 Ground Speed above 24000 FT
Descent During a Turn:	Allowed
VNAV Mode:	Flight Plan

DME DME Assessment Results for BLFRG3 path DSIDE_OXISE

DME/DME	
RNP:	RNP 2
Flight Mode:	Manual
Line of Sight (DTED Level 0 Max):	Evaluated
Inertial Drift:	Enabled
Initial Drift:	0.558 NM
INS Drift Rate:	8.0 NM/Hour
Range Mode:	OSV
RNP Edges:	Evaluated
Min DME Range:	3.0 NM
DME Types:	DME, VOR-DME, VORTAC, TACAN
DME Include Angles:	30 to 150
Critical DMEs:	Not Allowed
DoD Facilities:	Not included
Foreign Facilities:	Included
High DMEs:	Included
Low DMEs:	Included
Terminal DMEs:	Included
Flight Check DMEs:	Not selected
Higher Altitudes:	Not Evaluated
Near Maximum Altitude:	Not Evaluated
Automatic ESVs:	Not enabled
Disabled DMEs:	None

DME/DME (Continued)										
DMEs Used										
#	Name	Lat/Lon	MAGVAR	Range	Type	Source	Critical	Status	Time	Distance
1	LAL	N27° 59' 10.31", W082° 00' 50.06"	1.0 E	130	H	IFPA	NO	Enabled		
2	SRQ	N27° 24' 25.26", W082° 33' 49.18"	5.0 W	130	DH	IFPA	NO	Enabled		
3	PIE	N27° 54' 27.95", W082° 41' 03.51"	5.0 W	130	H	IFPA	NO	Enabled		

Flight Check DME Selection						
Distance [NM]	Selected DMEs					Alternate
0.0	SRQ [IFPA]	LAL [IFPA]				
0.2	SRQ [IFPA]	LAL [IFPA]	PIE [IFPA]			

Inertial Drift Segments			
#	Start Location	End Location	Length [NM]

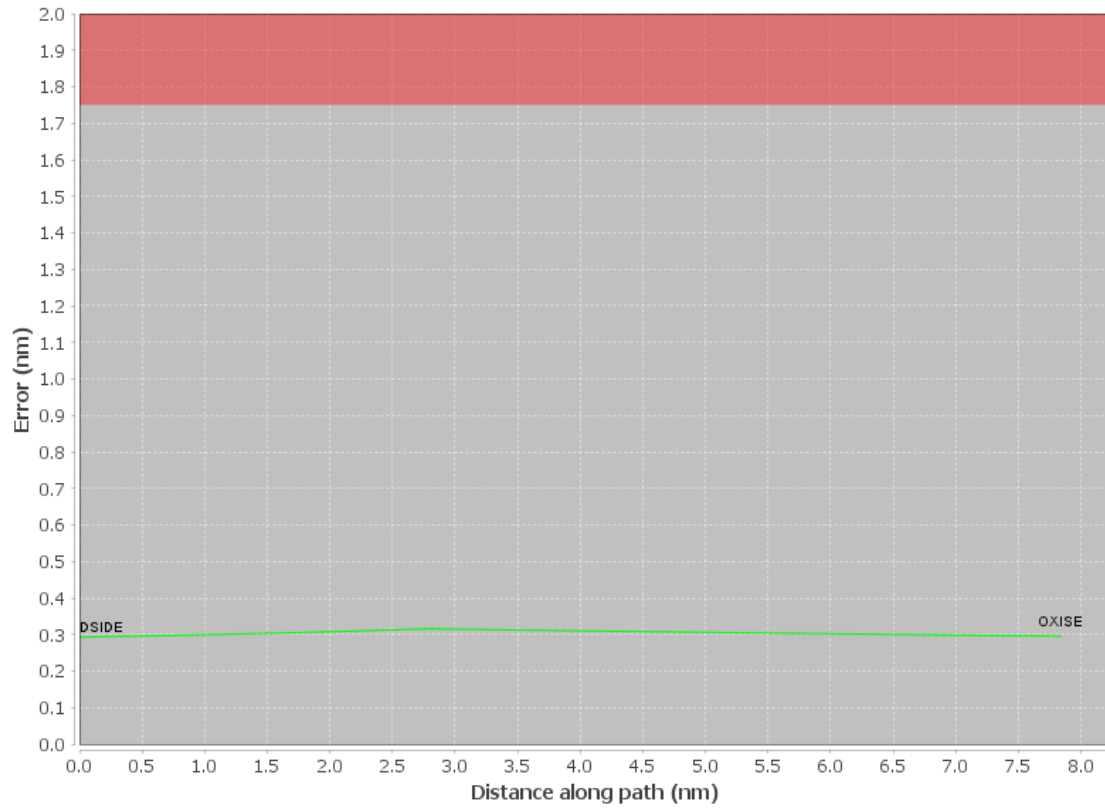
Available DMEs by Waypoints			
Waypoint Before	Waypoint After	DME List	Suggested DMEs
DSIDE	OXISE	LAL [IFPA], SRQ [IFPA], PIE [IFPA]	

DME DME Assessment Results for BLFRG3 path DSIDE_OXISE

User Data Files								
#	File Name							
None								
User DMEs								
#	Name	Lat/Lon	MAGVAR	Range	Elevation [ft]	Frequency	Replaces	Status
1	DHP FAA 955265-40 DHP [IFPA]	N25° 47' 59.87", W080° 20' 56.53"	4.0 W	130	5.9	113.9	DHP FAA 955265-40	
ESV:		Bearing [True]: 307.0° to 43.0° Bearing [Mag]: 311.0° to 47.0°				Arc Distance: Out to 72.0 NM Altitude: 4000.0 to 10000.0 ft		
2	SRQ FAA 070100-39 SRQ [IFPA]	N27° 24' 25.26", W082° 33' 49.18"	5.0 W	130	19	117.0	SRQ FAA 070100-39	
ESV:		Bearing [True]: 87.0° to 148.0° Bearing [Mag]: 92.0° to 153.0°				Arc Distance: Out to 77.0 NM Altitude: 4000.0 to 5000.0 ft		
3	PHK FAA 900991-60 PHK [IFPA]	N26° 46' 57.87", W080° 41' 29.16"	0.0 E	130	15.5	115.4	PHK FAA 900991-60	
ESV:		Bearing [True]: 130.0° to 200.0° Bearing [Mag]: 130.0° to 200.0°				Arc Distance: Out to 75.0 NM Altitude: 4000.0 to 10000.0 ft		
4	CYY FAA 815803-26 CYY [IFPA]	N26° 09' 12.34", W081° 46' 41.17"	3.0 W	25	8.7	108.6	CYY FAA 815803-26	
ESV:		Bearing [True]: 347.0° to 17.0° Bearing [Mag]: 350.0° to 20.0°				Arc Distance: Out to 65.0 NM Altitude: 3500.0 to 10000.0 ft		
5	ZBV FAA 051542-34 ZBV [IFPA]	N25° 42' 15.00", W079° 17' 40.00"	4.0 W	130	10	116.7	ZBV FAA 051542-34	
ESV:		Bearing [True]: 286.0° to 26.0° Bearing [Mag]: 290.0° to 30.0°				Arc Distance: Out to 60.0 NM Altitude: 4000.0 to 18000.0 ft		
6	PHK FAA 900991-30 PHK [IFPA]	N26° 46' 57.87", W080° 41' 29.16"	0.0 E	130	15.5	115.4	PHK FAA 900991-30	
ESV:		Bearing [True]: 235.0° to 300.0° Bearing [Mag]: 235.0° to 300.0°				Arc Distance: Out to 80.0 NM Altitude: 4000.0 to 15000.0 ft		

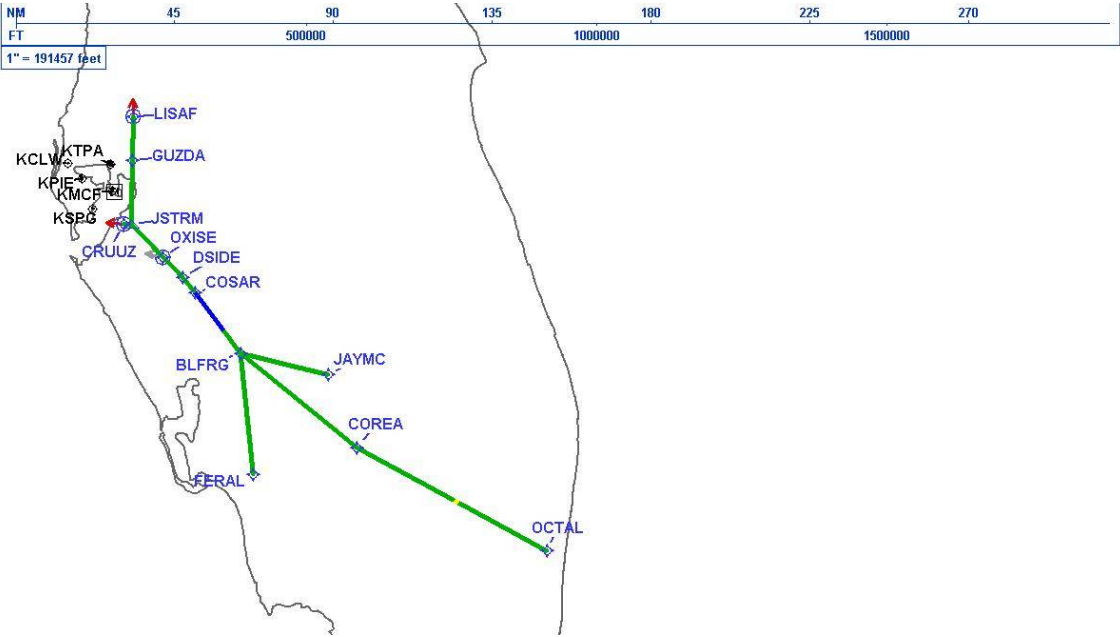
DME DME Assessment Results for BLFRG3 path DSIDE_OXISE

DME Error



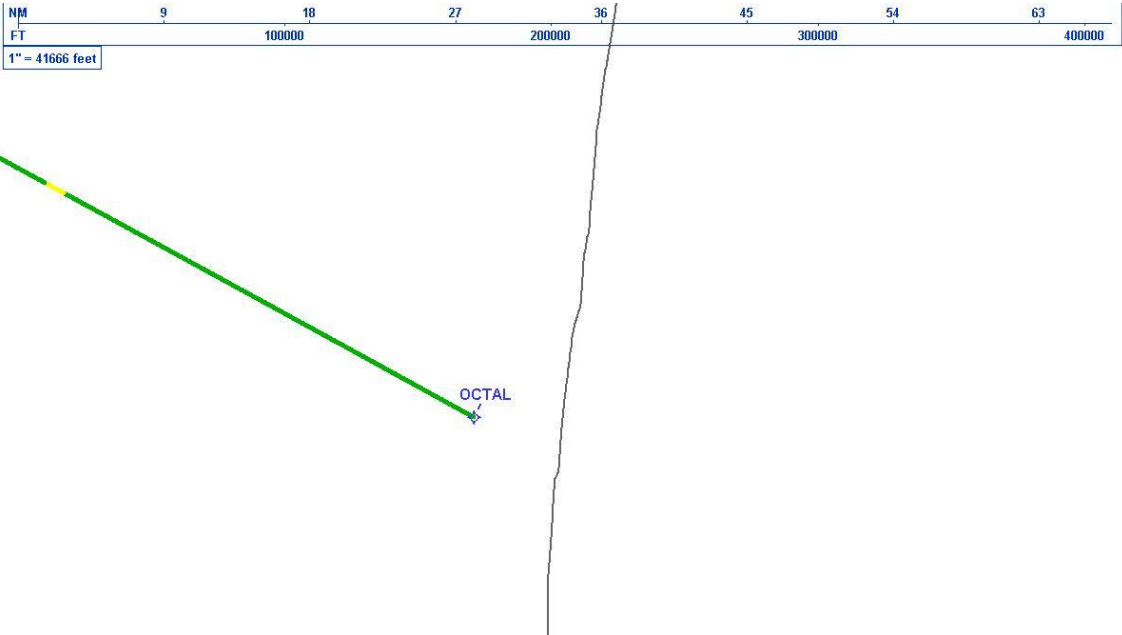
DME DME Assessment Results for BLFRG3 path DSIDE_OXISE

Graphic Depiction 1



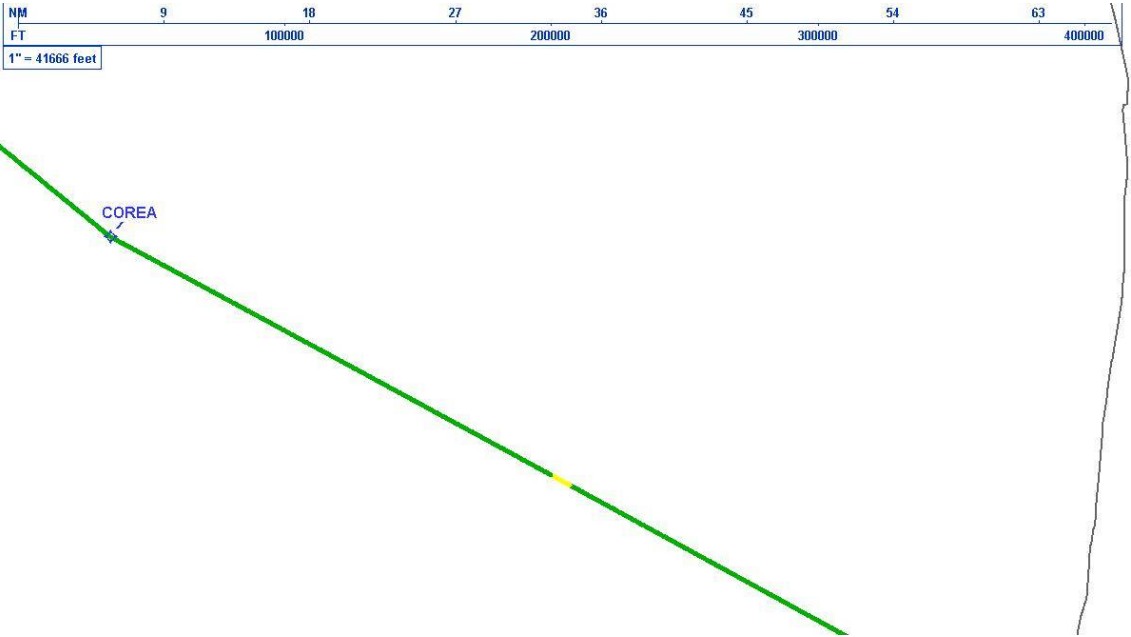
DME DME Assessment Results for BLFRG3 path DSIDE_OXISE

Graphic Depiction 2



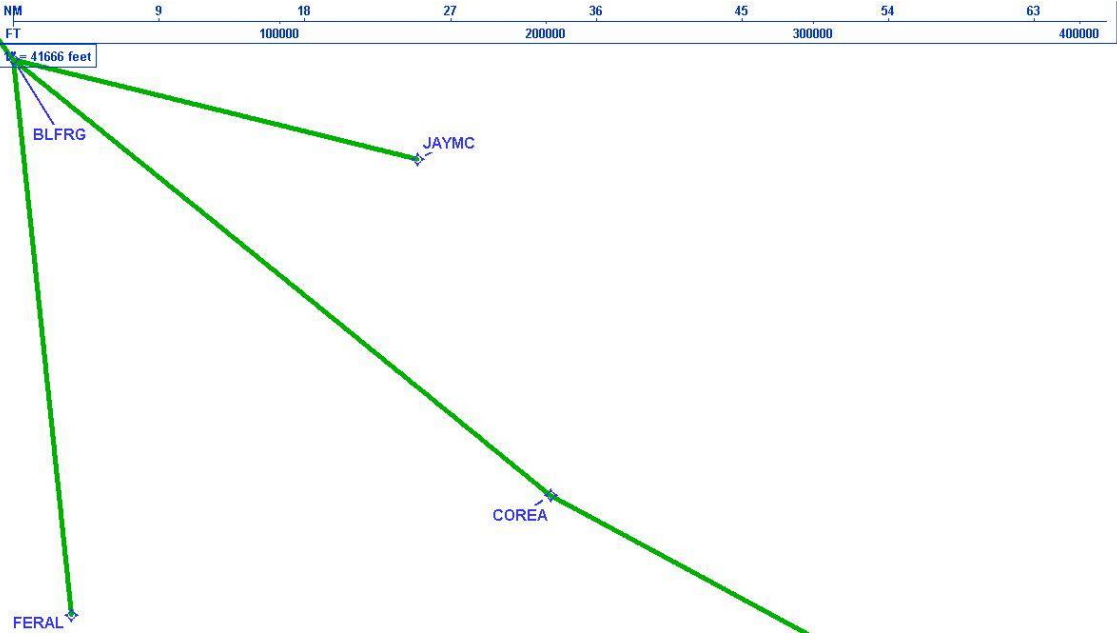
DME DME Assessment Results for BLFRG3 path DSIDE_OXISE

Graphic Depiction 3



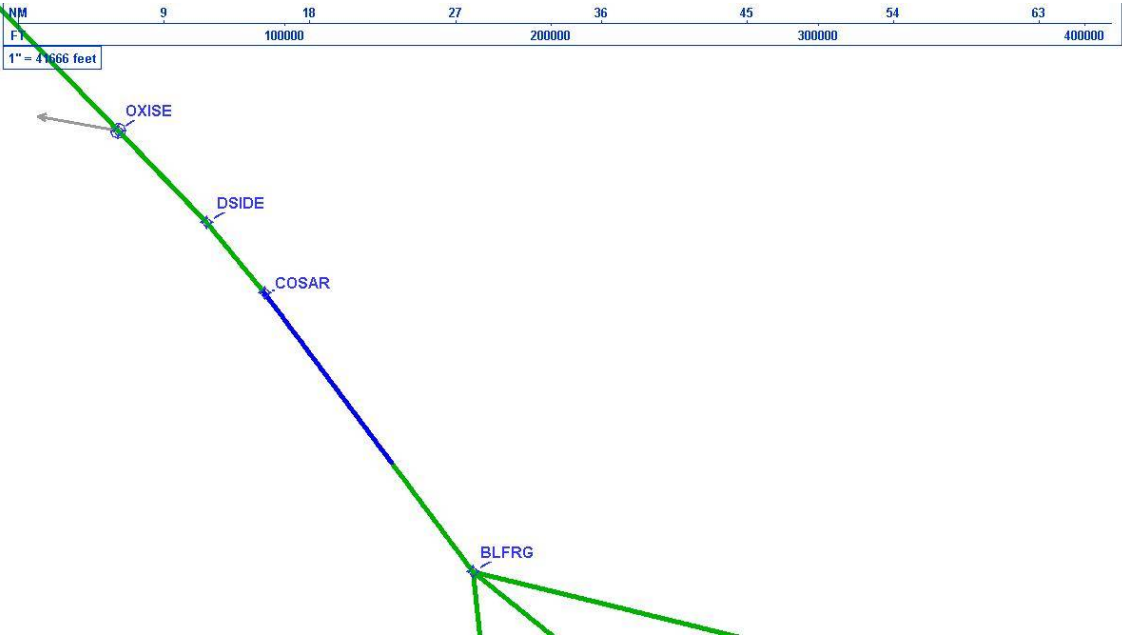
DME DME Assessment Results for BLFRG3 path DSIDE_OXISE

Graphic Depiction 4



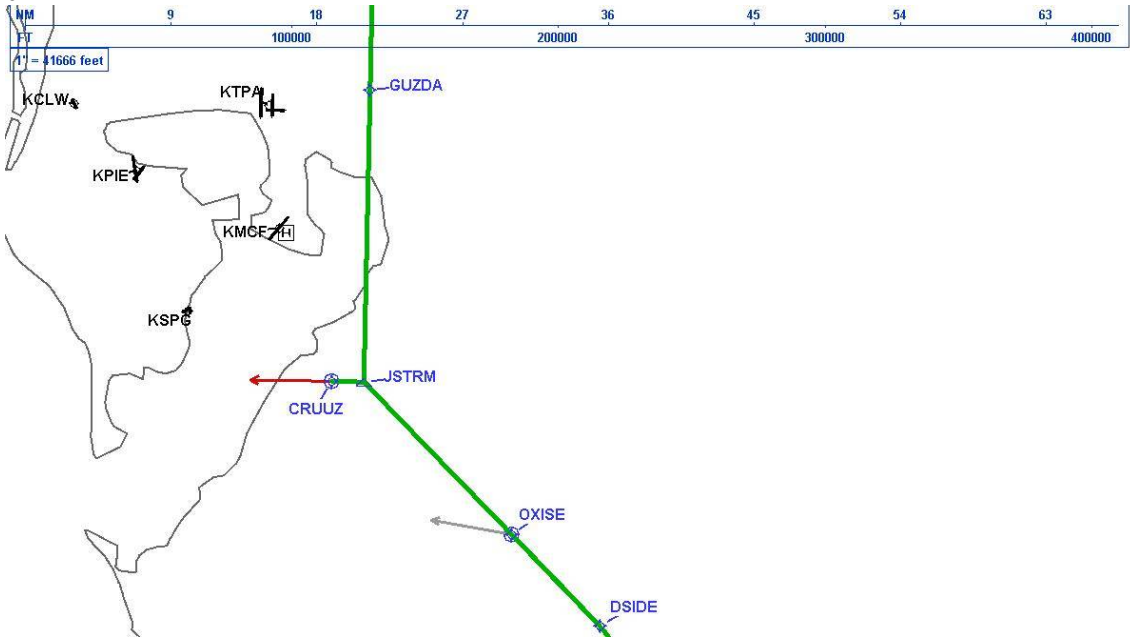
DME DME Assessment Results for BLFRG3 path DSIDE_OXISE

Graphic Depiction 5



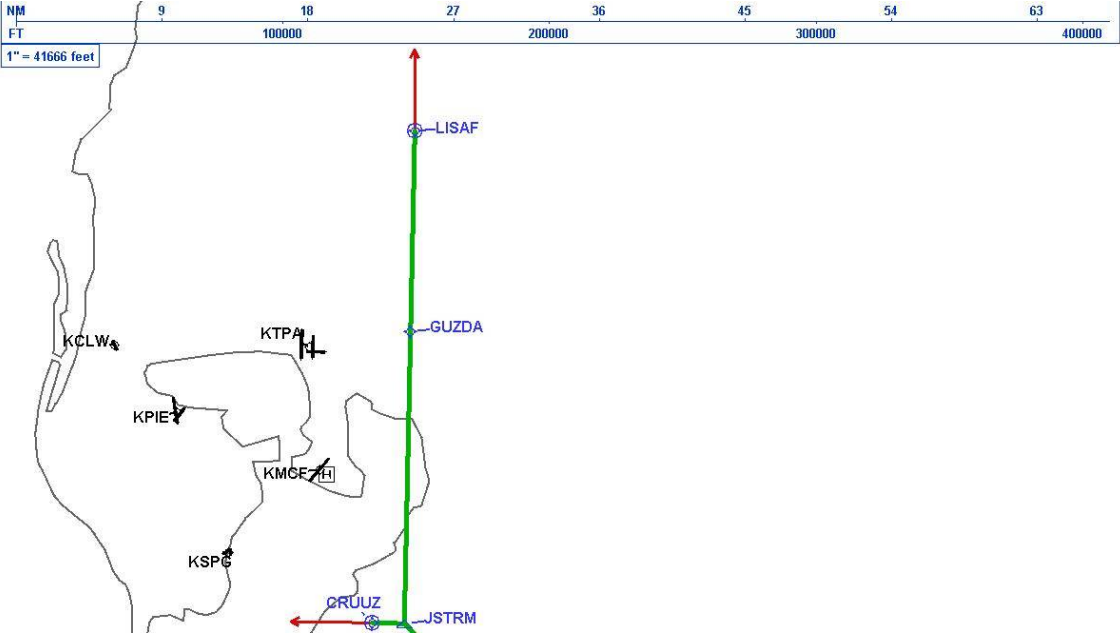
DME DME Assessment Results for BLFRG3 path DSIDE_OXISE

Graphic Depiction 6



DME DME Assessment Results for BLFRG3 path DSIDE_OXISE

Graphic Depiction 7



DME DME Assessment Results for BLFRG3 path FERAL_BLFRG

Results Summary

Flyability:	Completed
DME/DME:	Completed - No Critical DMEs
Name:	Mark CTR Thompson
Project File:	C:\Users\Mark CTR Thompson\OneDrive - Federal Aviation Administration\Desktop\RNAV Projects\RNAV Projects 2025\TPA.SRQ STARS_250417\KTPA BLFRG3 (RNAV) STAR\DME\KTPA BLFRG3 (RNAV) STAR DME 240710.tgs
Output File:	C:\Users\Mark CTR Thompson\OneDrive - Federal Aviation Administration\Desktop\RNAV Projects\RNAV Projects 2025\TPA.SRQ STARS_250417\KTPA BLFRG3 (RNAV) STAR\DME\KTPA [IFPA] BLFRG3 20240710_0843 EDT\FERAL_BLFRG\KTPA BLFRG3 RNAV STAR FERAL BLFRG 20240710_0843 EDT.pdf
Procedure Name:	BLFRG3
Software: DmeDmePlugin:	7.3.2
Date/Time:	07/10/2024 08:43 EDT
Databases:	MITRE 3DEP 3 arcsec

Failures

No Failures

Warnings

No Warnings

Informational

No Informational

Notes For Flight Check

None

Flight Plan

Name	Type	Lat/Lon	Altitude (ft)	VNAV Mode	Ground Speed (kts)	Turn Type	Leg Type
FERAL	WP	N26° 30' 47.36", W081° 46' 15.74"	4000	VNAV	200	FLY_BY	TF
BLFRG	WP	N27° 04' 58.21", W081° 50' 18.76"	4000	VNAV	200	FLY_BY	TF

Flyability

Flight Type:	RNAV_STAR
Selected Airport:	KTPA [IFPA]
Climb Gradient:	None assigned
Speeds:	200 Ground Speed to 11000 FT
	240 Ground Speed to 18000 FT
	260 Ground Speed to 24000 FT
	340 Ground Speed above 24000 FT
Descent During a Turn:	Allowed
VNAV Mode:	Flight Plan

DME DME Assessment Results for BLFRG3 path FERAL_BLFRG

DME/DME	
RNP:	RNP 2
Flight Mode:	Manual
Line of Sight (DTED Level 0 Max):	Evaluated
Inertial Drift:	Enabled
Initial Drift:	0.558 NM
INS Drift Rate:	8.0 NM/Hour
Range Mode:	OSV
RNP Edges:	Evaluated
Min DME Range:	3.0 NM
DME Types:	DME, VOR-DME, VORTAC, TACAN
DME Include Angles:	30 to 150
Critical DMEs:	Not Allowed
DoD Facilities:	Not included
Foreign Facilities:	Included
High DMEs:	Included
Low DMEs:	Included
Terminal DMEs:	Included
Flight Check DMEs:	Not selected
Higher Altitudes:	Not Evaluated
Near Maximum Altitude:	Not Evaluated
Automatic ESVs:	Not enabled
Disabled DMEs:	None

DME/DME (Continued)										
DMEs Used										
#	Name	Lat/Lon	MAGVAR	Range	Type	Source	Critical	Status	Time	Distance
1	CYY	N26° 09' 12.34", W081° 46' 41.17"	3.0 W	25	T	IFPA	NO	Enabled		
2	PHK	N26° 46' 57.87", W080° 41' 29.16"	0.0 E	130	H	IFPA	NO	Enabled		
3	SRQ	N27° 24' 25.26", W082° 33' 49.18"	5.0 W	130	DH	IFPA	NO	Enabled		
4	LBV	N26° 49' 41.47", W081° 23' 29.18"	1.0 E	40	L	IFPA	NO	Enabled		
5	RSW	N26° 31' 47.59", W081° 46' 32.77"	2.0 W	130	H	IFPA	NO	Enabled		

Flight Check DME Selection						
Distance [NM]	Selected DMEs					Alternate
0.0	SRQ [IFPA]	LBV [IFPA]	PHK [IFPA]	CYY [IFPA]		
4.1	SRQ [IFPA]	LBV [IFPA]	PHK [IFPA]	RSW [IFPA]	CYY [IFPA]	
20.6	RSW [IFPA]	LBV [IFPA]	SRQ [IFPA]			
20.7	CYY [IFPA]	PHK [IFPA]	LBV [IFPA]	RSW [IFPA]	SRQ [IFPA]	

Inertial Drift Segments			
#	Start Location	End Location	Length [NM]

Available DMEs by Waypoints			
Waypoint Before	Waypoint After	DME List	Suggested DMEs
FERAL	BLFRG	CYY [IFPA], PHK [IFPA], SRQ [IFPA], LBV [IFPA], RSW [IFPA]	

DME DME Assessment Results for BLFRG3 path FERAL_BLFRG

User Data Files

#	File Name
---	-----------

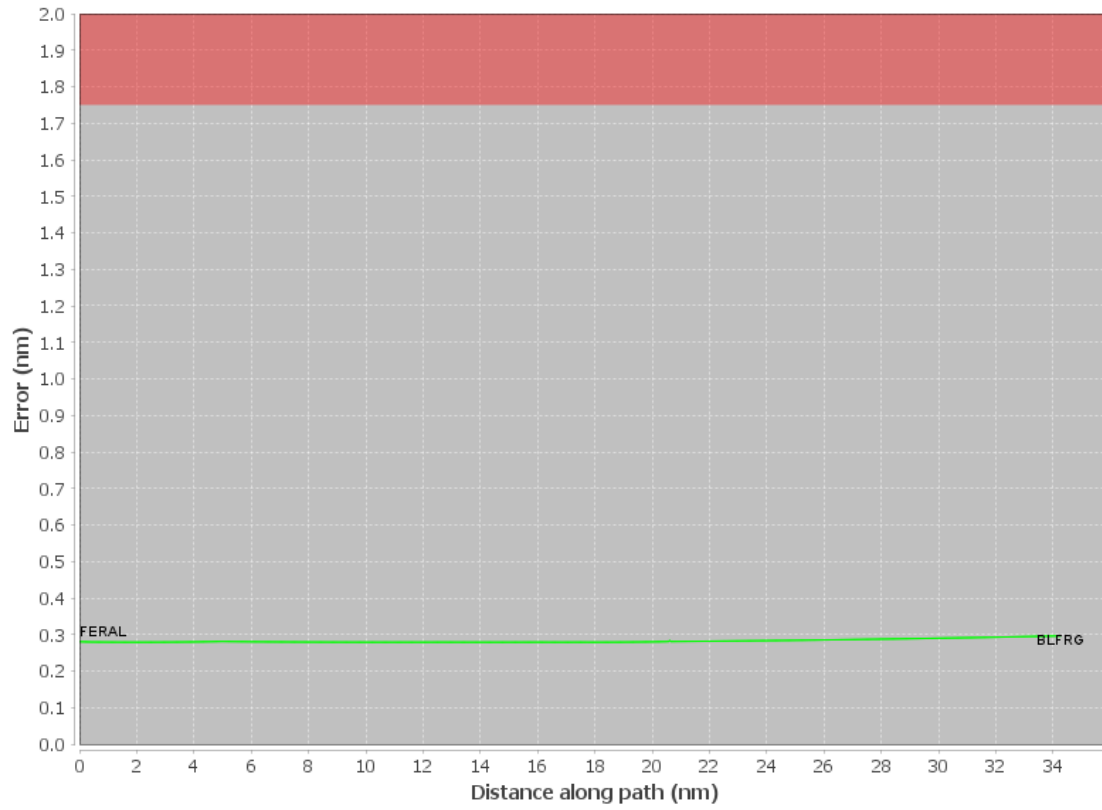
None

User DMEs

#	Name	Lat/Lon	MAGVAR	Range	Elevation [ft]	Frequency	Replaces	Status
1	DHP FAA 955265-40 DHP [IFPA]	N25° 47' 59.87", W080° 20' 56.53"	4.0 W	130	5.9	113.9	DHP FAA 955265-40	
	ESV:	Bearing [True]: 307.0° to 43.0° Bearing [Mag]: 311.0° to 47.0°				Arc Distance: Out to 72.0 NM Altitude: 4000.0 to 10000.0 ft		
2	SRQ FAA 070100-39 SRQ [IFPA]	N27° 24' 25.26", W082° 33' 49.18"	5.0 W	130	19	117.0	SRQ FAA 070100-39	
	ESV:	Bearing [True]: 87.0° to 148.0° Bearing [Mag]: 92.0° to 153.0°				Arc Distance: Out to 77.0 NM Altitude: 4000.0 to 5000.0 ft		
3	PHK FAA 900991-60 PHK [IFPA]	N26° 46' 57.87", W080° 41' 29.16"	0.0 E	130	15.5	115.4	PHK FAA 900991-60	
	ESV:	Bearing [True]: 130.0° to 200.0° Bearing [Mag]: 130.0° to 200.0°				Arc Distance: Out to 75.0 NM Altitude: 4000.0 to 10000.0 ft		
4	CYY FAA 815803-26 CYY [IFPA]	N26° 09' 12.34", W081° 46' 41.17"	3.0 W	25	8.7	108.6	CYY FAA 815803-26	
	ESV:	Bearing [True]: 347.0° to 17.0° Bearing [Mag]: 350.0° to 20.0°				Arc Distance: Out to 65.0 NM Altitude: 3500.0 to 10000.0 ft		
5	ZBV FAA 051542-34 ZBV [IFPA]	N25° 42' 15.00", W079° 17' 40.00"	4.0 W	130	10	116.7	ZBV FAA 051542-34	
	ESV:	Bearing [True]: 286.0° to 26.0° Bearing [Mag]: 290.0° to 30.0°				Arc Distance: Out to 60.0 NM Altitude: 4000.0 to 18000.0 ft		
6	PHK FAA 900991-30 PHK [IFPA]	N26° 46' 57.87", W080° 41' 29.16"	0.0 E	130	15.5	115.4	PHK FAA 900991-30	
	ESV:	Bearing [True]: 235.0° to 300.0° Bearing [Mag]: 235.0° to 300.0°				Arc Distance: Out to 80.0 NM Altitude: 4000.0 to 15000.0 ft		

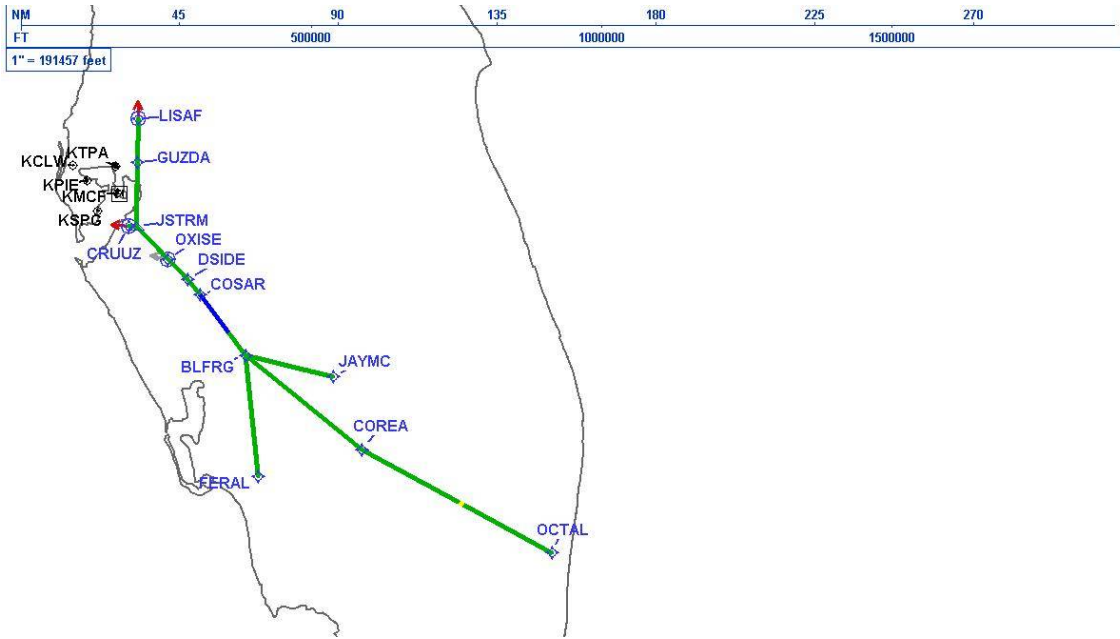
DME DME Assessment Results for BLFRG3 path FERAL_BLFRG

DME Error



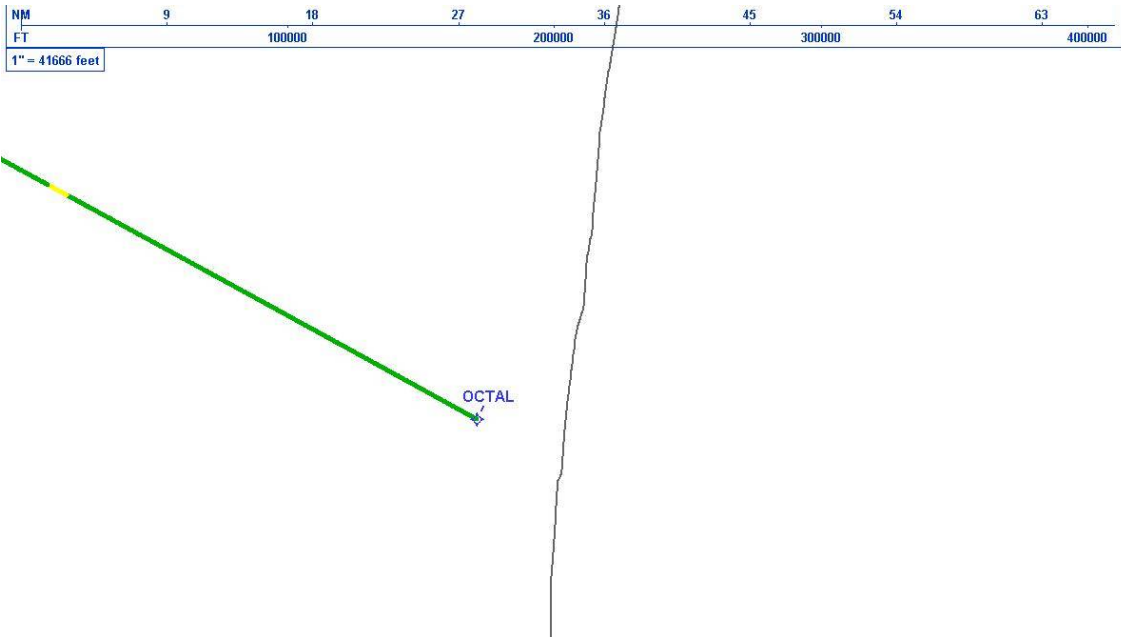
DME DME Assessment Results for BLFRG3 path FERAL_BLFRG

Graphic Depiction 1



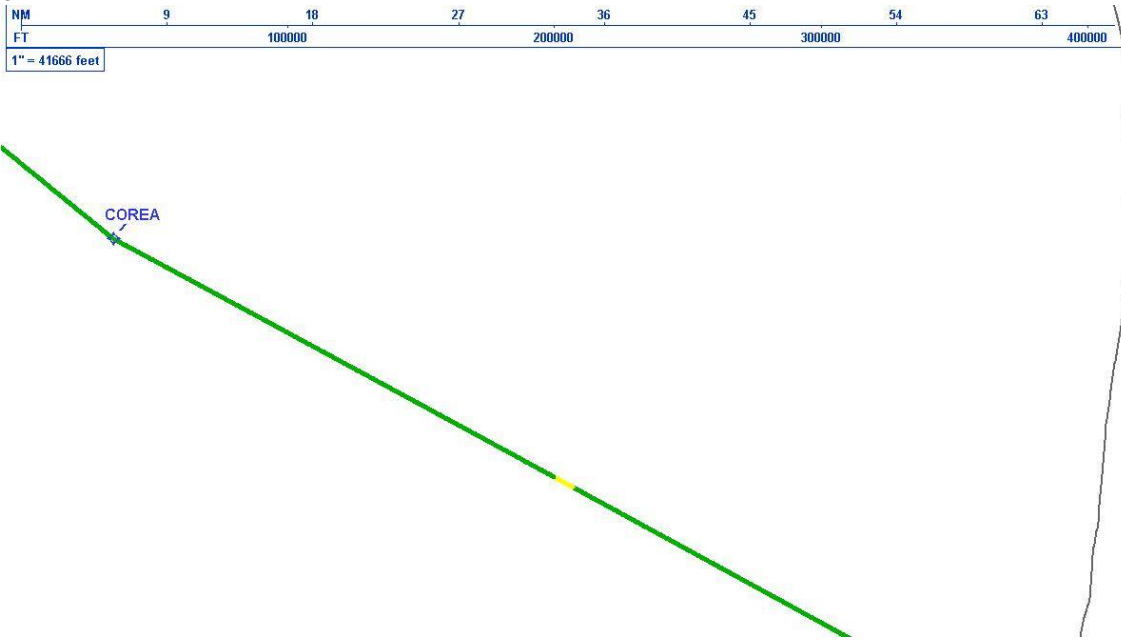
DME DME Assessment Results for BLFRG3 path FERAL_BLFRG

Graphic Depiction 2



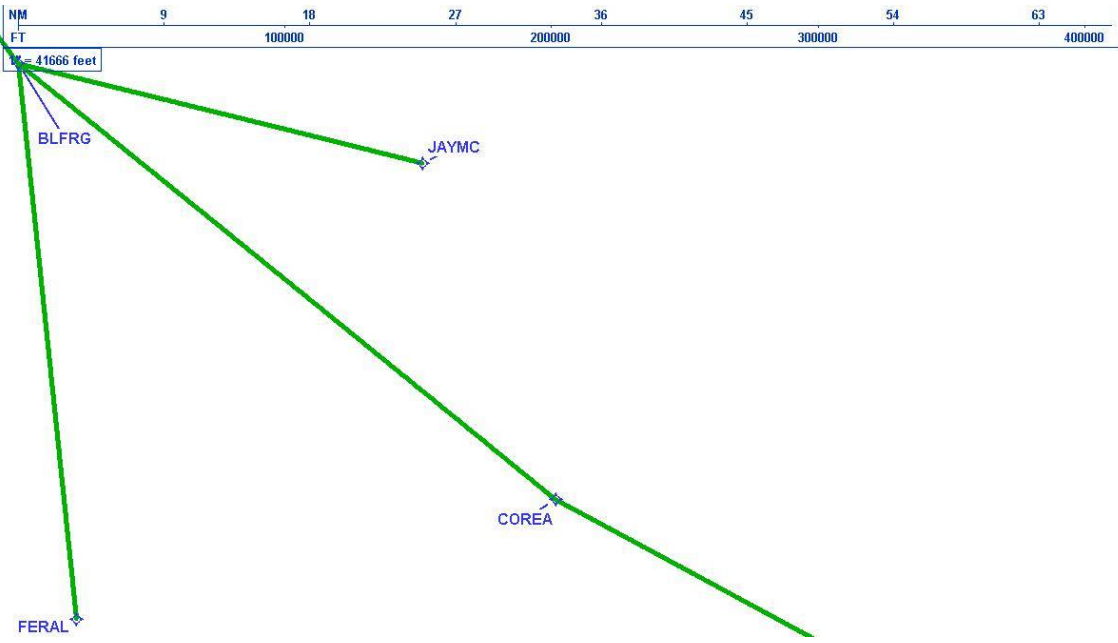
DME DME Assessment Results for BLFRG3 path FERAL_BLFRG

Graphic Depiction 3



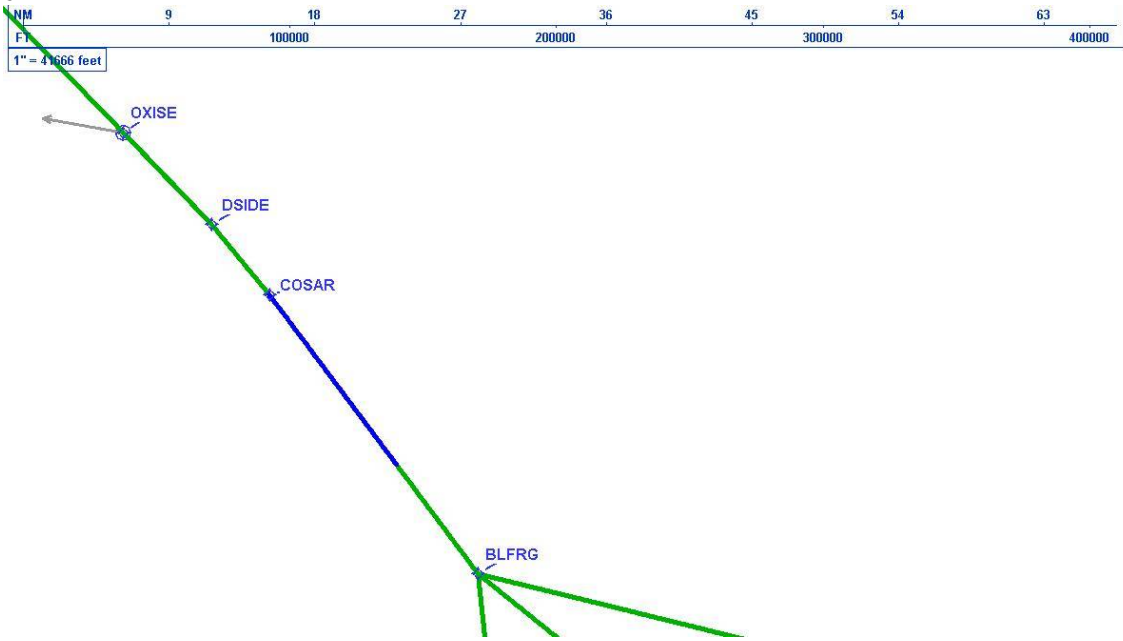
DME DME Assessment Results for BLFRG3 path FERAL_BLFRG

Graphic Depiction 4



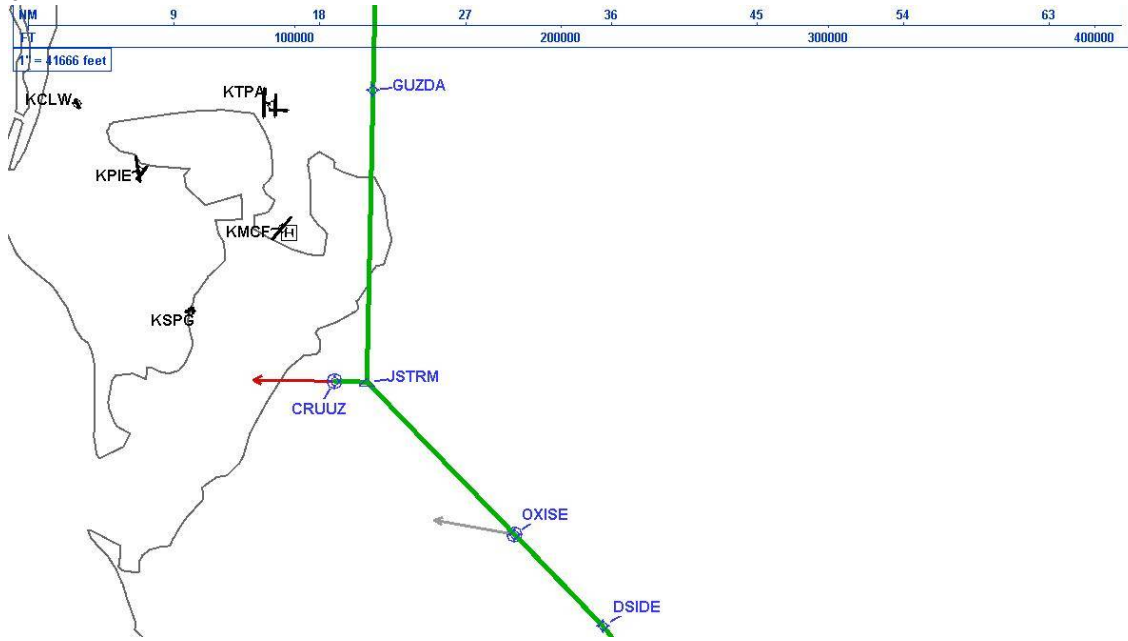
DME DME Assessment Results for BLFRG3 path FERAL_BLFRG

Graphic Depiction 5



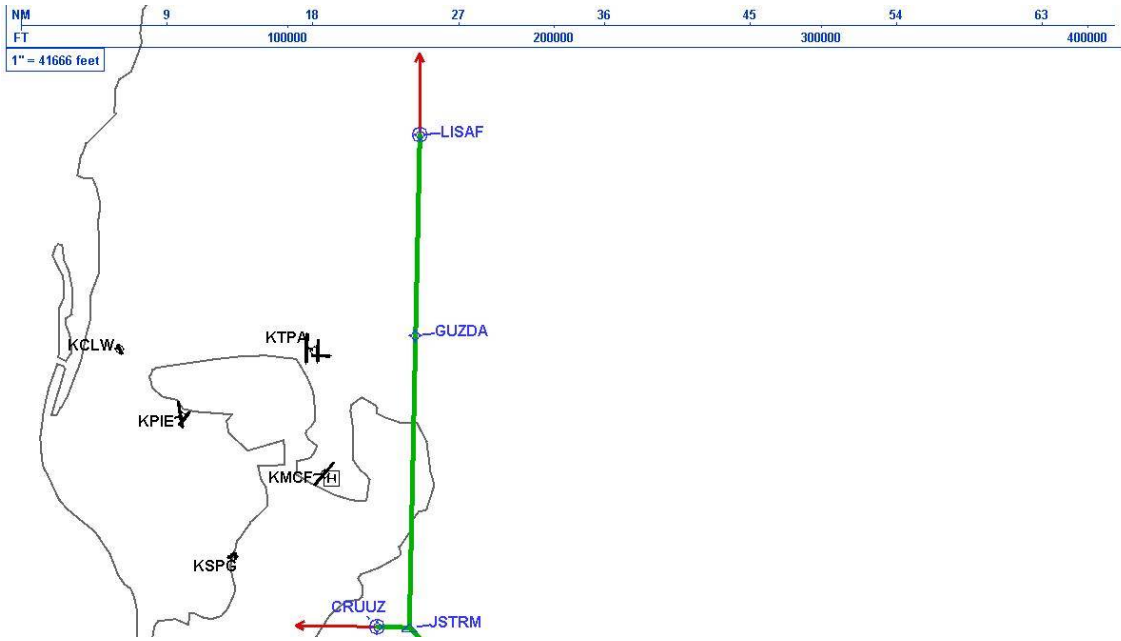
DME DME Assessment Results for BLFRG3 path FERAL_BLFRG

Graphic Depiction 6



DME DME Assessment Results for BLFRG3 path FERAL_BLFRG

Graphic Depiction 7



DME DME Assessment Results for BLFRG3 path JAYMC_BLFRG

Results Summary

Flyability:	Completed
DME/DME:	Completed - No Critical DMEs
Name:	Mark CTR Thompson
Project File:	C:\Users\Mark CTR Thompson\OneDrive - Federal Aviation Administration\Desktop\RNAV Projects\RNAV Projects 2025\TPA.SRQ STARS_250417\KTPA BLFRG3 (RNAV) STAR\DME\KTPA BLFRG3 (RNAV) STAR DME 240710.tgs
Output File:	C:\Users\Mark CTR Thompson\OneDrive - Federal Aviation Administration\Desktop\RNAV Projects\RNAV Projects 2025\TPA.SRQ STARS_250417\KTPA BLFRG3 (RNAV) STAR\DME\KTPA [IFPA] BLFRG3 20240710_0843 EDT\JAYMC_BLFRG\KTPA BLFRG3 RNAV STAR JAYMC BLFRG 20240710_0843 EDT.pdf
Procedure Name:	BLFRG3
Software: DmeDmePlugin:	7.3.2
Date/Time:	07/10/2024 08:43 EDT
Databases:	MITRE 3DEP 3 arcsec

Failures

No Failures

Warnings

No Warnings

Informational

No Informational

Notes For Flight Check

None

Flight Plan

Name	Type	Lat/Lon	Altitude (ft)	VNAV Mode	Ground Speed (kts)	Turn Type	Leg Type
JAYMC	WP	N26° 58' 51.00", W081° 22' 08.00"	4000	VNAV	200	FLY_BY	TF
BLFRG	WP	N27° 04' 58.21", W081° 50' 18.76"	4000	VNAV	200	FLY_BY	TF

Flyability

Flight Type:	RNAV_STAR
Selected Airport:	KTPA [IFPA]
Climb Gradient:	None assigned
Speeds:	200 Ground Speed to 11000 FT
	240 Ground Speed to 18000 FT
	260 Ground Speed to 24000 FT
	340 Ground Speed above 24000 FT
Descent During a Turn:	Allowed
VNAV Mode:	Flight Plan

DME DME Assessment Results for BLFRG3 path JAYMC_BLFRG

DME/DME	
RNP:	RNP 2
Flight Mode:	Manual
Line of Sight (DTED Level 0 Max):	Evaluated
Inertial Drift:	Enabled
Initial Drift:	0.558 NM
INS Drift Rate:	8.0 NM/Hour
Range Mode:	OSV
RNP Edges:	Evaluated
Min DME Range:	3.0 NM
DME Types:	DME, VOR-DME, VORTAC, TACAN
DME Include Angles:	30 to 150
Critical DMEs:	Not Allowed
DoD Facilities:	Not included
Foreign Facilities:	Included
High DMEs:	Included
Low DMEs:	Included
Terminal DMEs:	Included
Flight Check DMEs:	Not selected
Higher Altitudes:	Not Evaluated
Near Maximum Altitude:	Not Evaluated
Automatic ESVs:	Not enabled
Disabled DMEs:	None

DME/DME (Continued)										
DMEs Used										
#	Name	Lat/Lon	MAGVAR	Range	Type	Source	Critical	Status	Time	Distance
1	CYY	N26° 09' 12.34", W081° 46' 41.17"	3.0 W	25	T	IFPA	NO	Enabled		
2	PHK	N26° 46' 57.87", W080° 41' 29.16"	0.0 E	130	H	IFPA	NO	Enabled		
3	SRQ	N27° 24' 25.26", W082° 33' 49.18"	5.0 W	130	DH	IFPA	NO	Enabled		
4	LBV	N26° 49' 41.47", W081° 23' 29.18"	1.0 E	40	L	IFPA	NO	Enabled		
5	RSW	N26° 31' 47.59", W081° 46' 32.77"	2.0 W	130	H	IFPA	NO	Enabled		

Flight Check DME Selection						
Distance [NM]	Selected DMEs					Alternate
0.0	LBV [IFPA]	PHK [IFPA]	SRQ [IFPA]	RSW [IFPA]		
1.1	LBV [IFPA]	PHK [IFPA]	RSW [IFPA]			
1.4	SRQ [IFPA]	RSW [IFPA]	PHK [IFPA]	LBV [IFPA]		
1.8	RSW [IFPA]	SRQ [IFPA]	LBV [IFPA]			
4.8	RSW [IFPA]	SRQ [IFPA]	PHK [IFPA]	LBV [IFPA]		
6.8	CYY [IFPA]	PHK [IFPA]	RSW [IFPA]	SRQ [IFPA]	LBV [IFPA]	

Inertial Drift Segments			
#	Start Location	End Location	Length [NM]

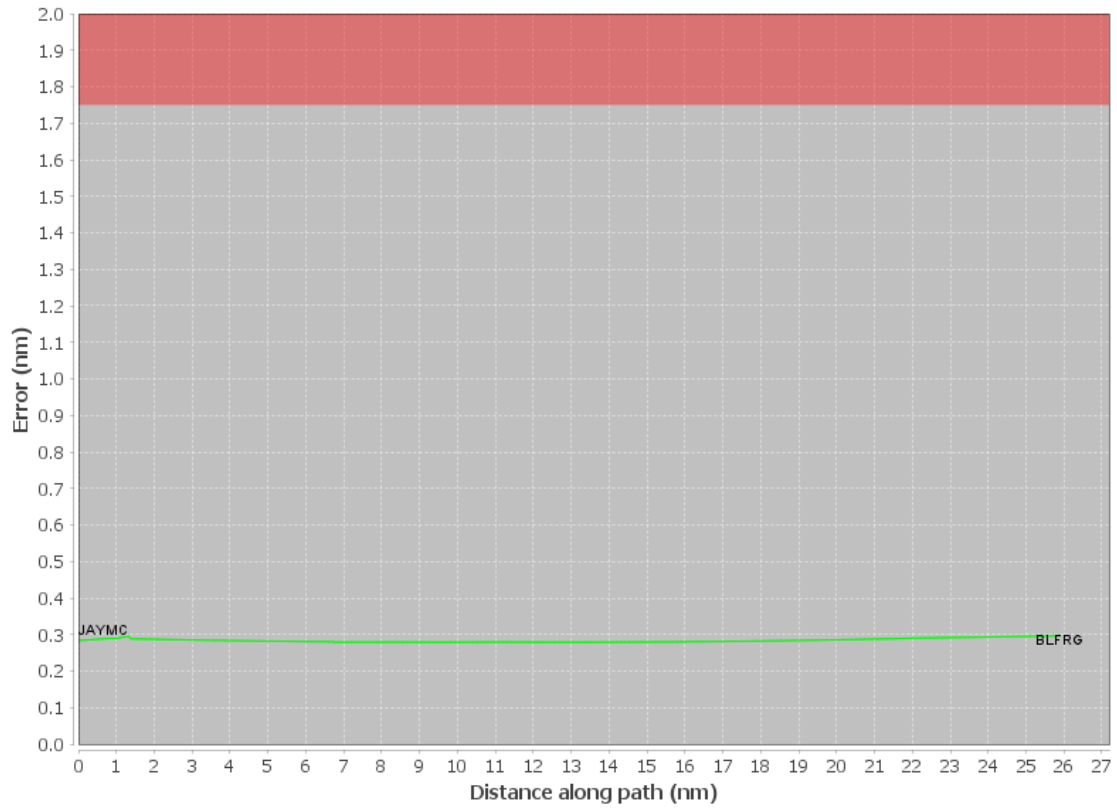
Available DMEs by Waypoints			
Waypoint Before	Waypoint After	DME List	Suggested DMEs
JAYMC	BLFRG	CYY [IFPA], PHK [IFPA], SRQ [IFPA], LBV [IFPA], RSW [IFPA]	

DME DME Assessment Results for BLFRG3 path JAYMC_BLFRG

User Data Files								
#	File Name							
None								
User DMEs								
#	Name	Lat/Lon	MAGVAR	Range	Elevation [ft]	Frequency	Replaces	Status
1	DHP FAA 955265-40 DHP [IFPA]	N25° 47' 59.87", W080° 20' 56.53"	4.0 W	130	5.9	113.9	DHP FAA 955265-40	
ESV:		Bearing [True]: 307.0° to 43.0° Bearing [Mag]: 311.0° to 47.0°				Arc Distance: Out to 72.0 NM Altitude: 4000.0 to 10000.0 ft		
2	SRQ FAA 070100-39 SRQ [IFPA]	N27° 24' 25.26", W082° 33' 49.18"	5.0 W	130	19	117.0	SRQ FAA 070100-39	
ESV:		Bearing [True]: 87.0° to 148.0° Bearing [Mag]: 92.0° to 153.0°				Arc Distance: Out to 77.0 NM Altitude: 4000.0 to 5000.0 ft		
3	PHK FAA 900991-60 PHK [IFPA]	N26° 46' 57.87", W080° 41' 29.16"	0.0 E	130	15.5	115.4	PHK FAA 900991-60	
ESV:		Bearing [True]: 130.0° to 200.0° Bearing [Mag]: 130.0° to 200.0°				Arc Distance: Out to 75.0 NM Altitude: 4000.0 to 10000.0 ft		
4	CYY FAA 815803-26 CYY [IFPA]	N26° 09' 12.34", W081° 46' 41.17"	3.0 W	25	8.7	108.6	CYY FAA 815803-26	
ESV:		Bearing [True]: 347.0° to 17.0° Bearing [Mag]: 350.0° to 20.0°				Arc Distance: Out to 65.0 NM Altitude: 3500.0 to 10000.0 ft		
5	ZBV FAA 051542-34 ZBV [IFPA]	N25° 42' 15.00", W079° 17' 40.00"	4.0 W	130	10	116.7	ZBV FAA 051542-34	
ESV:		Bearing [True]: 286.0° to 26.0° Bearing [Mag]: 290.0° to 30.0°				Arc Distance: Out to 60.0 NM Altitude: 4000.0 to 18000.0 ft		
6	PHK FAA 900991-30 PHK [IFPA]	N26° 46' 57.87", W080° 41' 29.16"	0.0 E	130	15.5	115.4	PHK FAA 900991-30	
ESV:		Bearing [True]: 235.0° to 300.0° Bearing [Mag]: 235.0° to 300.0°				Arc Distance: Out to 80.0 NM Altitude: 4000.0 to 15000.0 ft		

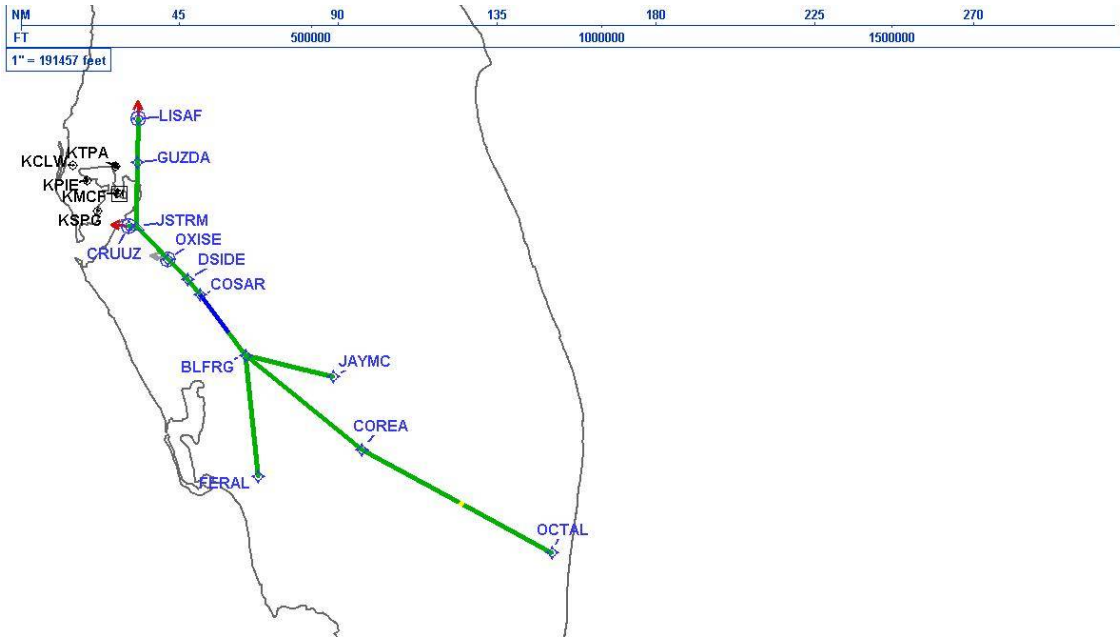
DME DME Assessment Results for BLFRG3 path JAYMC_BLFRG

DME Error



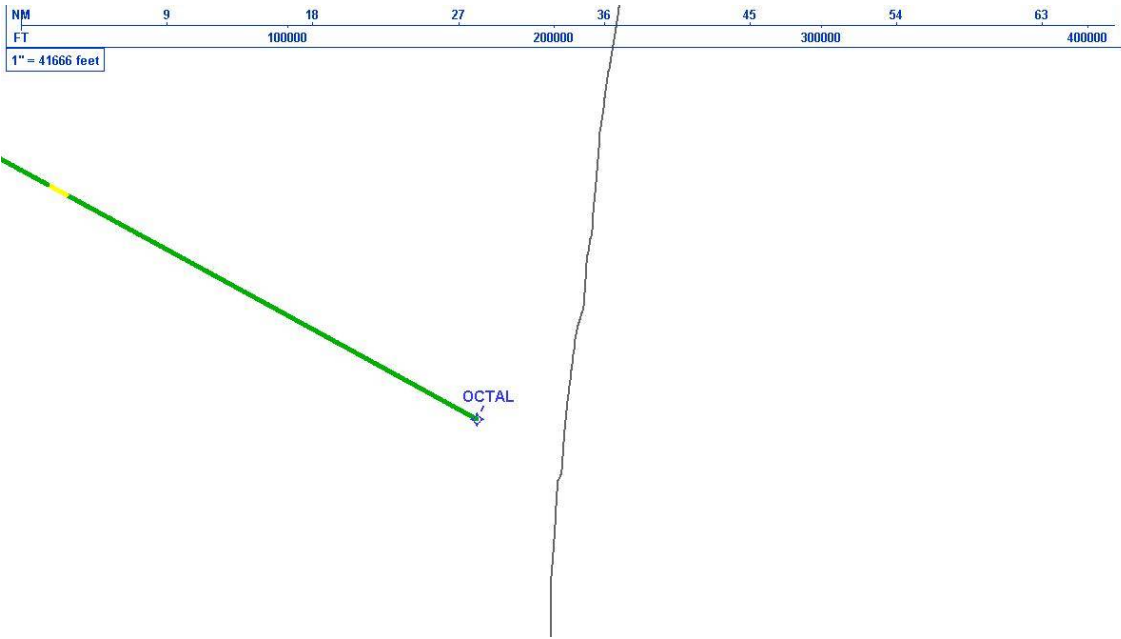
DME DME Assessment Results for BLFRG3 path JAYMC_BLFRG

Graphic Depiction 1



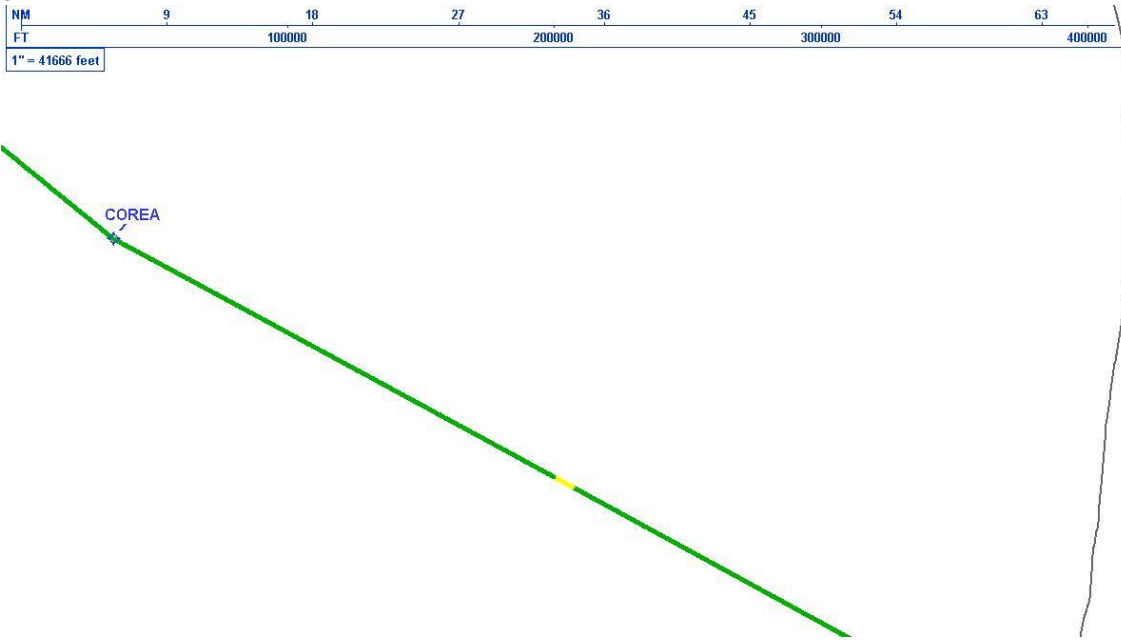
DME DME Assessment Results for BLFRG3 path JAYMC_BLFRG

Graphic Depiction 2



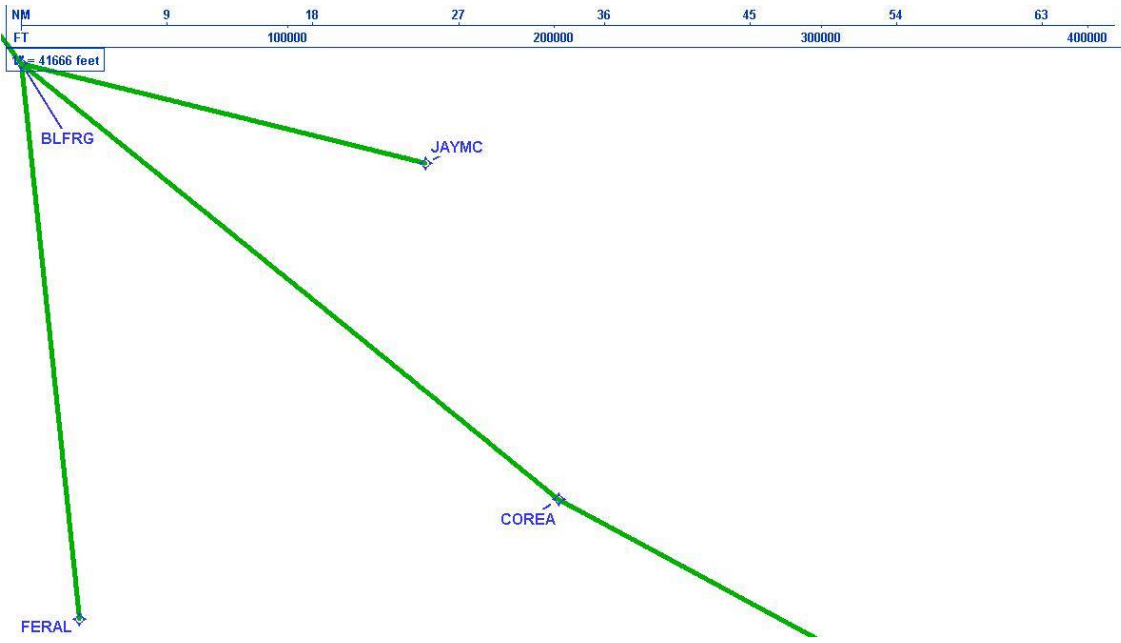
DME DME Assessment Results for BLFRG3 path JAYMC_BLFRG

Graphic Depiction 3



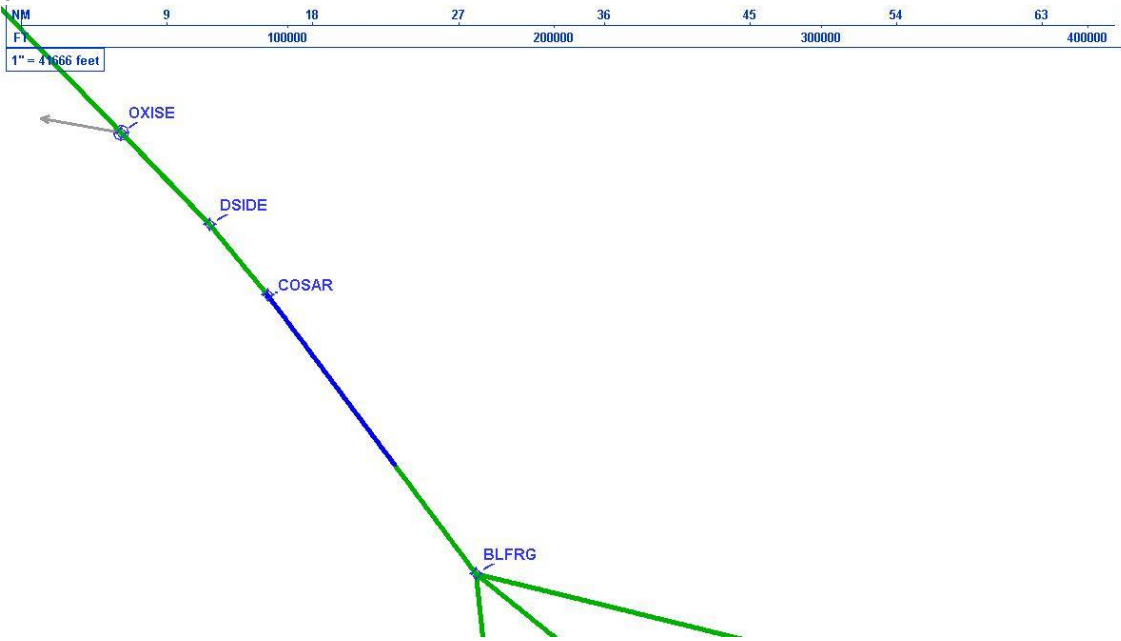
DME DME Assessment Results for BLFRG3 path JAYMC_BLFRG

Graphic Depiction 4



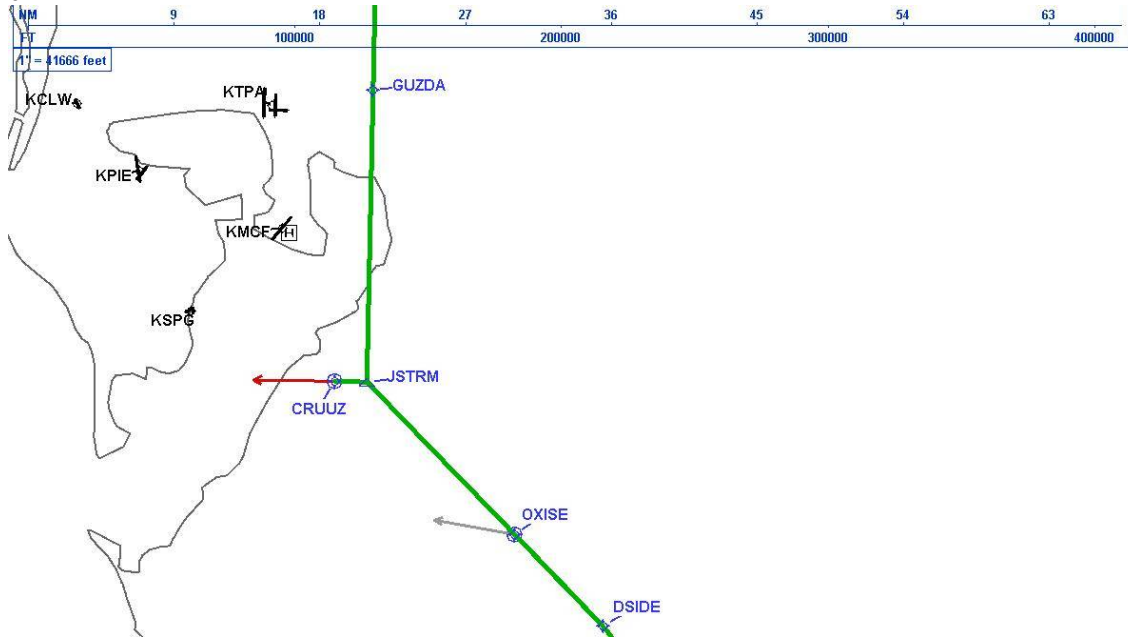
DME DME Assessment Results for BLFRG3 path JAYMC_BLFRG

Graphic Depiction 5



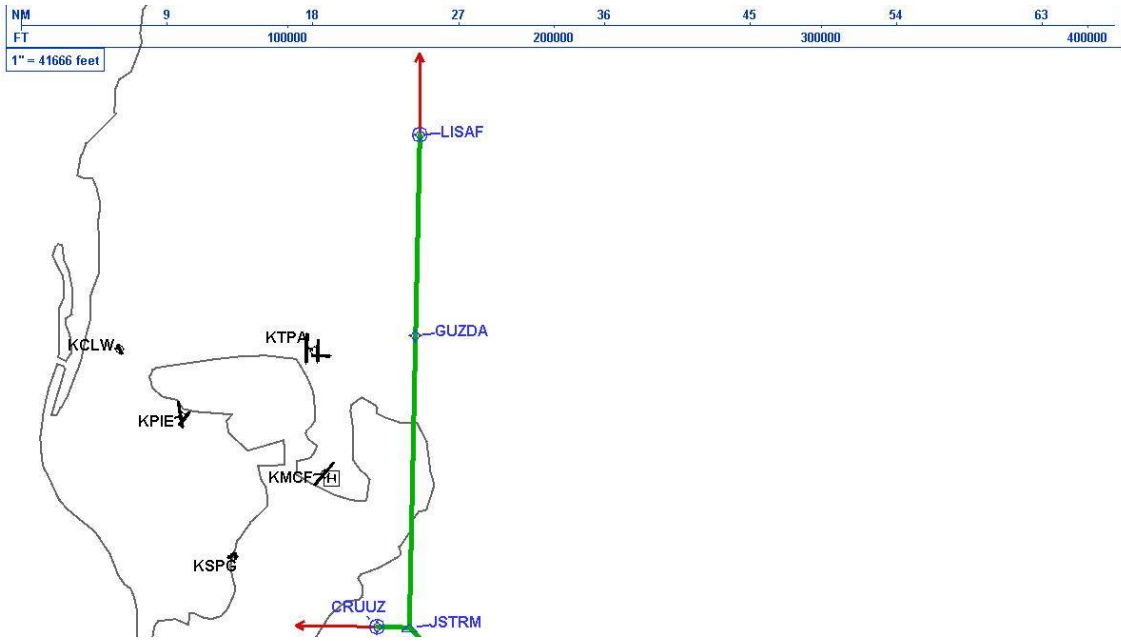
DME DME Assessment Results for BLFRG3 path JAYMC_BLFRG

Graphic Depiction 6



DME DME Assessment Results for BLFRG3 path JAYMC_BLFRG

Graphic Depiction 7



DME DME Assessment Results for BLFRG3 path JSTRM_CRUUZ

Results Summary

Flyability:	Completed
DME/DME:	Completed - No Critical DMEs
Name:	Mark CTR Thompson
Project File:	C:\Users\Mark CTR Thompson\OneDrive - Federal Aviation Administration\Desktop\RNAV Projects\RNAV Projects 2025\TPA.SRQ STARS_250417\KTPA BLFRG3 (RNAV) STAR\DME\KTPA BLFRG3 (RNAV) STAR DME 240710.tgs
Output File:	C:\Users\Mark CTR Thompson\OneDrive - Federal Aviation Administration\Desktop\RNAV Projects\RNAV Projects 2025\TPA.SRQ STARS_250417\KTPA BLFRG3 (RNAV) STAR\DME\KTPA [IFPA] BLFRG3 20240710_0843 EDT\JSTRM_CRUUZ\KTPA BLFRG3 RNAV STAR JSTRM CRUUZ 20240710_0843 EDT.pdf
Procedure Name:	BLFRG3
Software: DmeDmePlugin:	7.3.2
Date/Time:	07/10/2024 08:43 EDT
Databases:	MITRE 3DEP 3 arcsec

Failures

No Failures

Warnings

No Warnings

Informational

No Informational

Notes For Flight Check

None

Flight Plan

Name	Type	Lat/Lon	Altitude (ft)	VNAV Mode	Ground Speed (kts)	Turn Type	Leg Type
JSTRM	WP	N27° 41' 30.57", W082° 25' 21.07"	4000	VNAV	200	FLY_BY	TF
CRUUZ	WP	N27° 41' 32.38", W082° 27' 36.55"	4000	VNAV	200	FLY_OVER	TF

Flyability

Flight Type:	RNAV_STAR
Selected Airport:	KTPA [IFPA]
Climb Gradient:	None assigned
Speeds:	200 Ground Speed to 11000 FT
	240 Ground Speed to 18000 FT
	260 Ground Speed to 24000 FT
	340 Ground Speed above 24000 FT
Descent During a Turn:	Allowed
VNAV Mode:	Flight Plan

DME DME Assessment Results for BLFRG3 path JSTRM_CRUUZ

DME/DME	
RNP:	RNP 2
Flight Mode:	Manual
Line of Sight (DTED Level 0 Max):	Evaluated
Inertial Drift:	Enabled
Initial Drift:	0.558 NM
INS Drift Rate:	8.0 NM/Hour
Range Mode:	OSV
RNP Edges:	Evaluated
Min DME Range:	3.0 NM
DME Types:	DME, VOR-DME, VORTAC, TACAN
DME Include Angles:	30 to 150
Critical DMEs:	Not Allowed
DoD Facilities:	Not included
Foreign Facilities:	Included
High DMEs:	Included
Low DMEs:	Included
Terminal DMEs:	Included
Flight Check DMEs:	Not selected
Higher Altitudes:	Not Evaluated
Near Maximum Altitude:	Not Evaluated
Automatic ESVs:	Not enabled
Disabled DMEs:	None

DME/DME (Continued)										
DMEs Used										
#	Name	Lat/Lon	MAGVAR	Range	Type	Source	Critical	Status	Time	Distance
1	LAL	N27° 59' 10.31", W082° 00' 50.06"	1.0 E	130	H	IFPA	NO	Enabled		
2	SRQ	N27° 24' 25.26", W082° 33' 49.18"	5.0 W	130	DH	IFPA	NO	Enabled		
3	PIE	N27° 54' 27.95", W082° 41' 03.51"	5.0 W	130	H	IFPA	NO	Enabled		

Flight Check DME Selection						
Distance [NM]	Selected DMEs					Alternate
0.0	PIE [IFPA]	LAL [IFPA]	SRQ [IFPA]			

Inertial Drift Segments			
#	Start Location	End Location	Length [NM]

Available DMEs by Waypoints			
Waypoint Before	Waypoint After	DME List	Suggested DMEs
JSTRM	CRUUZ	LAL [IFPA], SRQ [IFPA], PIE [IFPA]	

DME DME Assessment Results for BLFRG3 path JSTRM_CRUUZ

User Data Files

#	File Name
None	

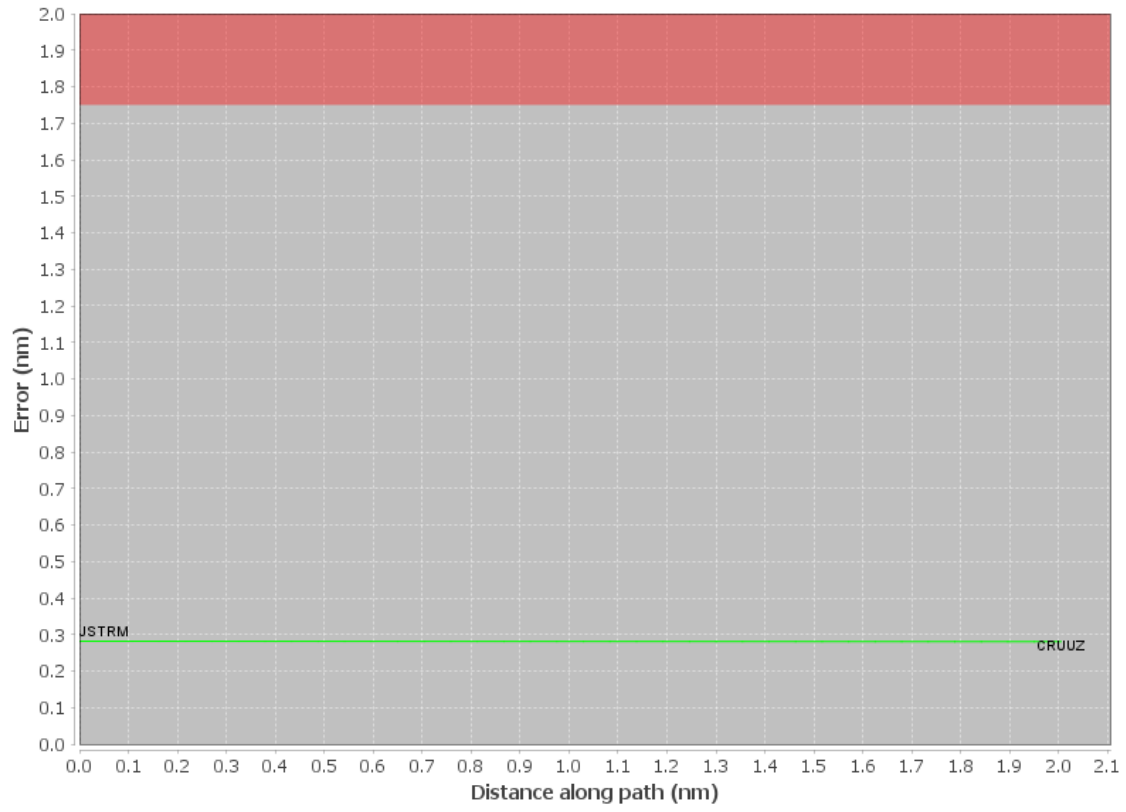
None

User DMEs

#	Name	Lat/Lon	MAGVAR	Range	Elevation [ft]	Frequency	Replaces	Status
1	DHP FAA 955265-40 DHP [IFPA]	N25° 47' 59.87", W080° 20' 56.53"	4.0 W	130	5.9	113.9	DHP FAA 955265-40	
ESV:		Bearing [True]: 307.0° to 43.0° Bearing [Mag]: 311.0° to 47.0°				Arc Distance: Out to 72.0 NM Altitude: 4000.0 to 10000.0 ft		
2	SRQ FAA 070100-39 SRQ [IFPA]	N27° 24' 25.26", W082° 33' 49.18"	5.0 W	130	19	117.0	SRQ FAA 070100-39	
ESV:		Bearing [True]: 87.0° to 148.0° Bearing [Mag]: 92.0° to 153.0°				Arc Distance: Out to 77.0 NM Altitude: 4000.0 to 5000.0 ft		
3	PHK FAA 900991-60 PHK [IFPA]	N26° 46' 57.87", W080° 41' 29.16"	0.0 E	130	15.5	115.4	PHK FAA 900991-60	
ESV:		Bearing [True]: 130.0° to 200.0° Bearing [Mag]: 130.0° to 200.0°				Arc Distance: Out to 75.0 NM Altitude: 4000.0 to 10000.0 ft		
4	CYY FAA 815803-26 CYY [IFPA]	N26° 09' 12.34", W081° 46' 41.17"	3.0 W	25	8.7	108.6	CYY FAA 815803-26	
ESV:		Bearing [True]: 347.0° to 17.0° Bearing [Mag]: 350.0° to 20.0°				Arc Distance: Out to 65.0 NM Altitude: 3500.0 to 10000.0 ft		
5	ZBV FAA 051542-34 ZBV [IFPA]	N25° 42' 15.00", W079° 17' 40.00"	4.0 W	130	10	116.7	ZBV FAA 051542-34	
ESV:		Bearing [True]: 286.0° to 26.0° Bearing [Mag]: 290.0° to 30.0°				Arc Distance: Out to 60.0 NM Altitude: 4000.0 to 18000.0 ft		
6	PHK FAA 900991-30 PHK [IFPA]	N26° 46' 57.87", W080° 41' 29.16"	0.0 E	130	15.5	115.4	PHK FAA 900991-30	
ESV:		Bearing [True]: 235.0° to 300.0° Bearing [Mag]: 235.0° to 300.0°				Arc Distance: Out to 80.0 NM Altitude: 4000.0 to 15000.0 ft		

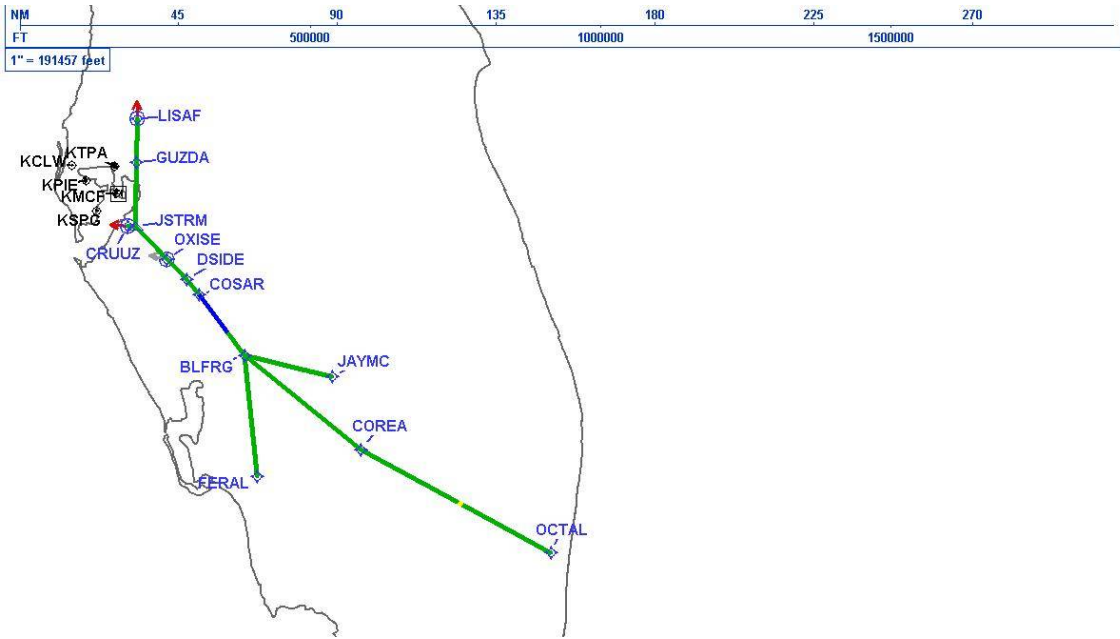
DME DME Assessment Results for BLFRG3 path JSTRM_CRUUZ

DME Error



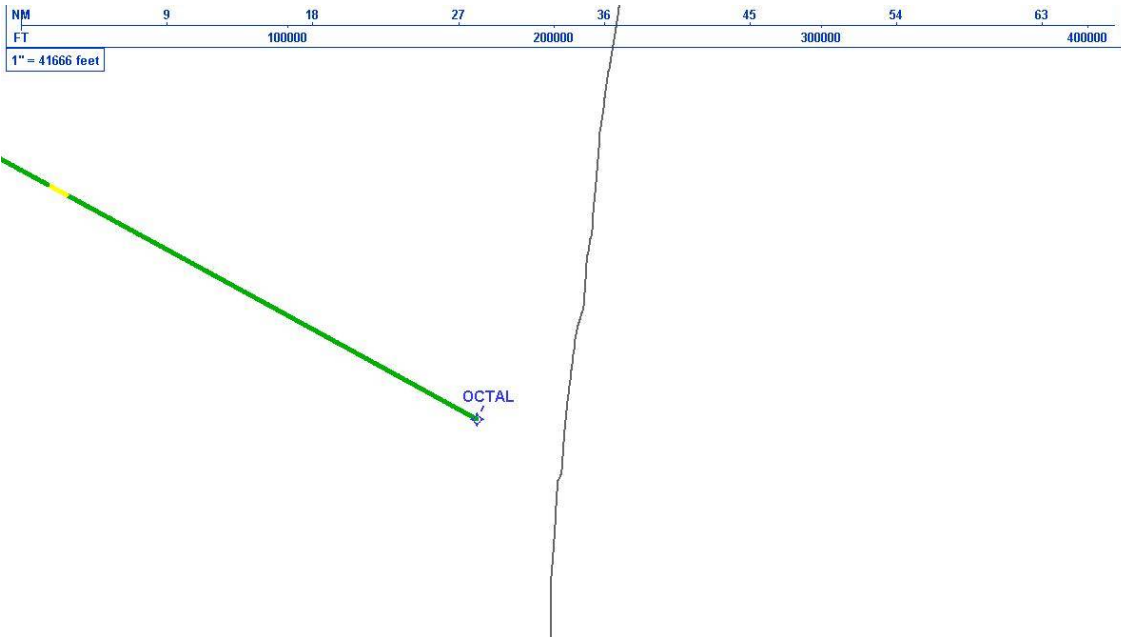
DME DME Assessment Results for BLFRG3 path JSTRM_CRUUZ

Graphic Depiction 1



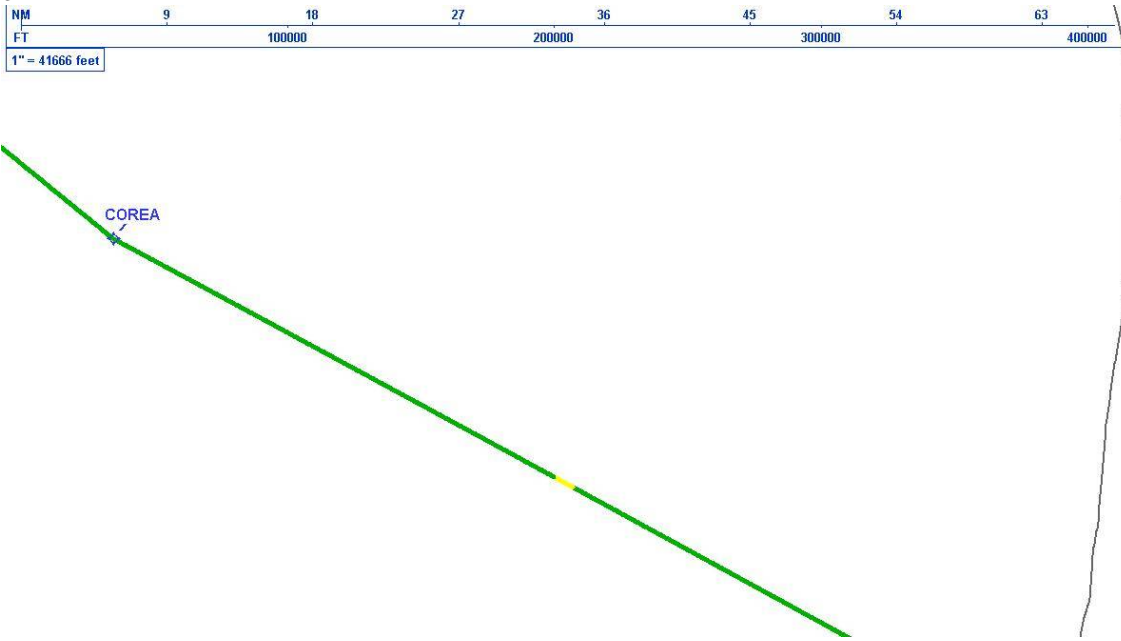
DME DME Assessment Results for BLFRG3 path JSTRM_CRUUZ

Graphic Depiction 2



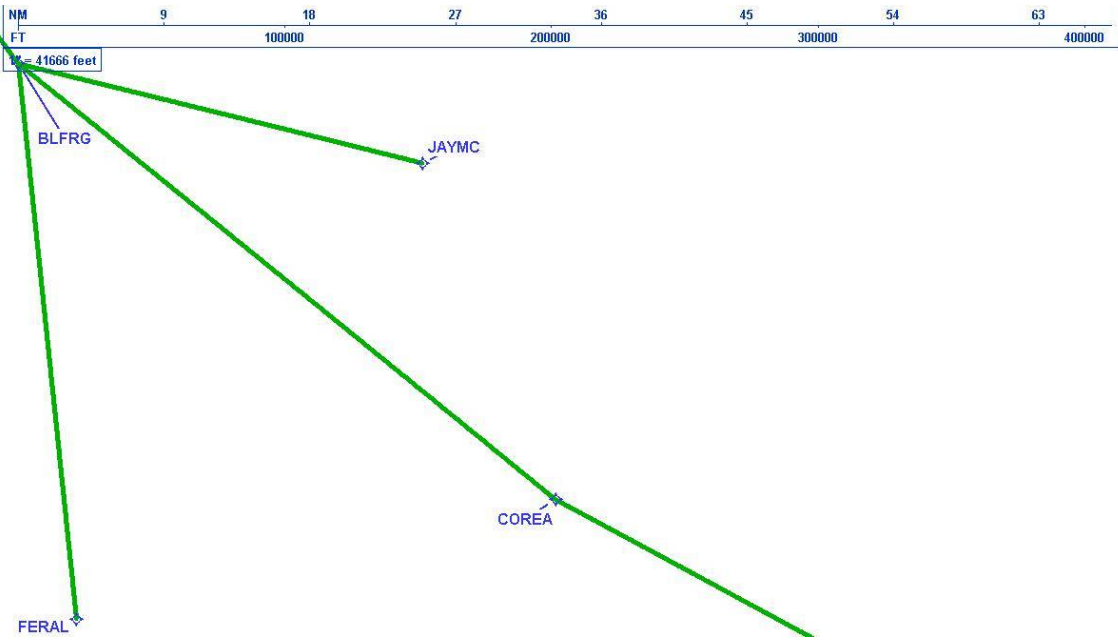
DME DME Assessment Results for BLFRG3 path JSTRM_CRUUZ

Graphic Depiction 3



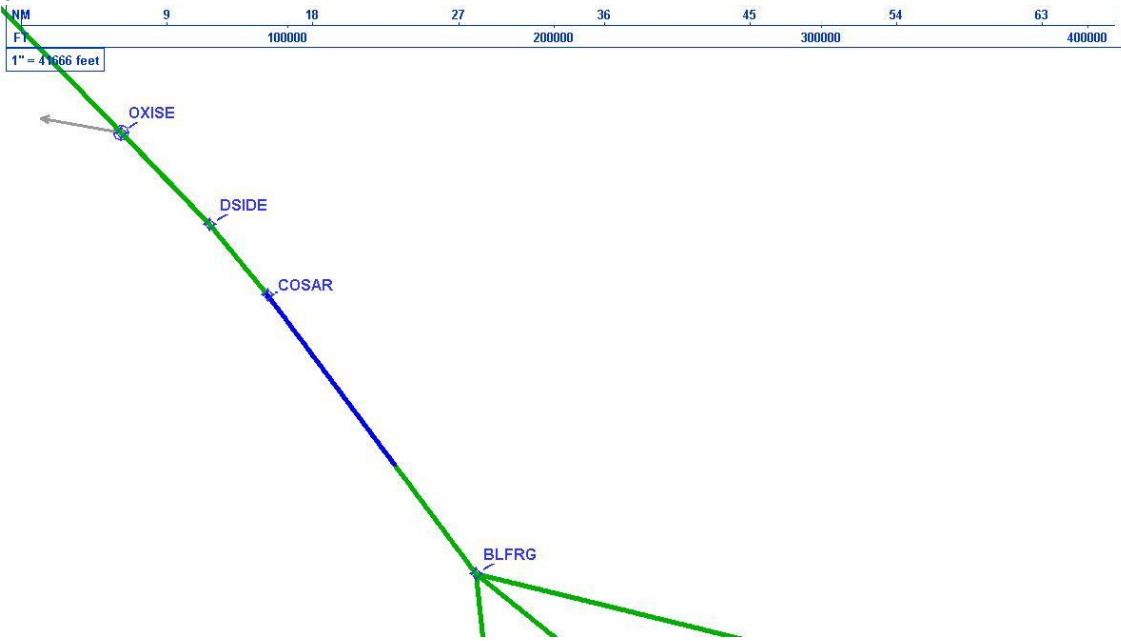
DME DME Assessment Results for BLFRG3 path JSTRM_CRUUZ

Graphic Depiction 4



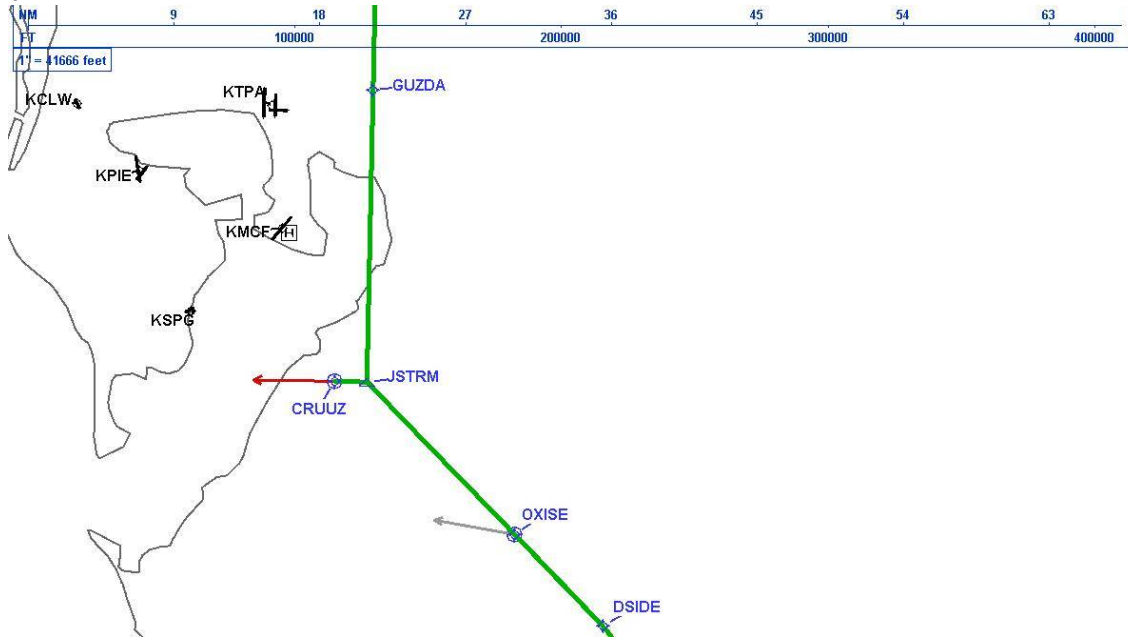
DME DME Assessment Results for BLFRG3 path JSTRM_CRUUZ

Graphic Depiction 5



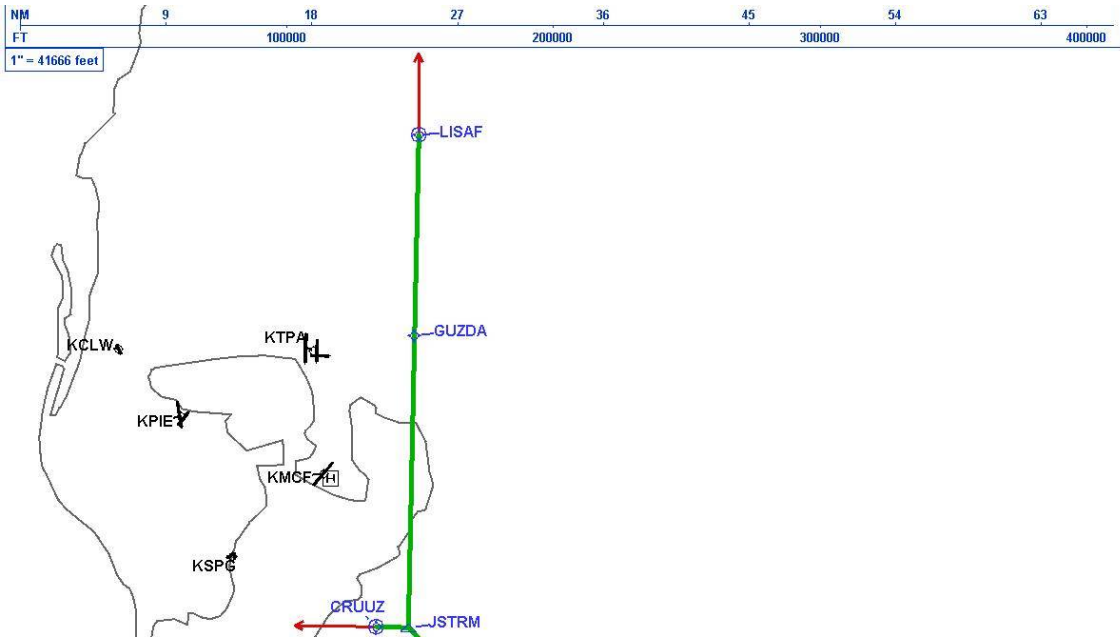
DME DME Assessment Results for BLFRG3 path JSTRM_CRUUZ

Graphic Depiction 6



DME DME Assessment Results for BLFRG3 path JSTRM_CRUUZ

Graphic Depiction 7



DME DME Assessment Results for BLFRG3 path OCTAL_LISAF

Results Summary

Flyability:	Completed
DME/DME:	Completed - No Critical DMEs
Name:	Mark CTR Thompson
Project File:	C:\Users\Mark CTR Thompson\OneDrive - Federal Aviation Administration\Desktop\RNAV Projects\RNAV Projects 2025\TPA.SRQ STARS_250417\KTPA BLFRG3 (RNAV) STAR\DME\KTPA BLFRG3 (RNAV) STAR DME 240710.tgs
Output File:	C:\Users\Mark CTR Thompson\OneDrive - Federal Aviation Administration\Desktop\RNAV Projects\RNAV Projects 2025\TPA.SRQ STARS_250417\KTPA BLFRG3 (RNAV) STAR\DME\KTPA [IFPA] BLFRG3 20240710_0843 EDT\OCTAL_LISAF\KTPA BLFRG3 RNAV STAR OCTAL LISAF 20240710_0843 EDT.pdf
Procedure Name:	BLFRG3
Software: DmeDmePlugin:	7.3.2
Date/Time:	07/10/2024 08:43 EDT
Databases:	MITRE 3DEP 3 arcsec

Failures

No Failures

Warnings

No Warnings

Informational

No Informational

Notes For Flight Check

None

Flight Plan

Name	Type	Lat/Lon	Altitude (ft)	VNAV Mode	Ground Speed (kts)	Turn Type	Leg Type
OCTAL	WP	N26° 09' 01.92", W080° 12' 11.60"	4000	VNAV	200	FLY_BY	TF
COREA	WP	N26° 38' 08.96", W081° 12' 52.29"	4000	VNAV	200	FLY_BY	TF
BLFRG	WP	N27° 04' 58.21", W081° 50' 18.76"	4000	VNAV	200	FLY_BY	TF
COSAR	WP	N27° 22' 08.50", W082° 04' 51.46"	4000	VNAV	200	FLY_BY	TF
DSIDE	WP	N27° 26' 30.06", W082° 08' 54.62"	4000	VNAV	200	FLY_BY	TF
JSTRM	WP	N27° 41' 30.57", W082° 25' 21.07"	4000	VNAV	200	FLY_BY	TF
GUZDA	WP	N27° 59' 26.58", W082° 24' 55.15"	4000	VNAV	210	FLY_BY	TF
LISAF	WP	N28° 11' 48.36", W082° 24' 37.17"	4000	VNAV	210	FLY_OVER	TF

Flyability

Flight Type:	RNAV_STAR
Selected Airport:	KTPA [IFPA]
Climb Gradient:	None assigned
Speeds:	200 Ground Speed to 11000 FT
	240 Ground Speed to 18000 FT
	260 Ground Speed to 24000 FT
	340 Ground Speed above 24000 FT
Descent During a Turn:	Allowed
VNAV Mode:	Flight Plan

DME DME Assessment Results for BLFRG3 path OCTAL_LISAF

DME/DME	
RNP:	RNP 2
Flight Mode:	Manual
Line of Sight (DTED Level 0 Max):	Evaluated
Inertial Drift:	Enabled
Initial Drift:	0.558 NM
INS Drift Rate:	8.0 NM/Hour
Range Mode:	OSV
RNP Edges:	Evaluated
Min DME Range:	3.0 NM
DME Types:	DME, VOR-DME, VORTAC, TACAN
DME Include Angles:	30 to 150
Critical DMEs:	Not Allowed
DoD Facilities:	Not included
Foreign Facilities:	Included
High DMEs:	Included
Low DMEs:	Included
Terminal DMEs:	Included
Flight Check DMEs:	Not selected
Higher Altitudes:	Not Evaluated
Near Maximum Altitude:	Not Evaluated
Automatic ESVs:	Not enabled
Disabled DMEs:	None

DME/DME (Continued)										
DMEs Used										
#	Name	Lat/Lon	MAGVAR	Range	Type	Source	Critical	Status	Time	Distance
1	CYY	N26° 09' 12.34", W081° 46' 41.17"	3.0 W	25	T	IFPA	NO	Enabled		
2	LAL	N27° 59' 10.31", W082° 00' 50.06"	1.0 E	130	H	IFPA	NO	Enabled		
3	PHK	N26° 46' 57.87", W080° 41' 29.16"	0.0 E	130	H	IFPA	NO	Enabled		
4	SRQ	N27° 24' 25.26", W082° 33' 49.18"	5.0 W	130	DH	IFPA	NO	Enabled		
5	PIE	N27° 54' 27.95", W082° 41' 03.51"	5.0 W	130	H	IFPA	NO	Enabled		
6	ZBV	N25° 42' 15.00", W079° 17' 40.00"	4.0 W	130	H	IFPA	NO	Enabled		
7	VKZ	N25° 45' 06.85", W080° 09' 16.00"	4.0 W	130	DH	IFPA	NO	Enabled		
8	LBV	N26° 49' 41.47", W081° 23' 29.18"	1.0 E	40	L	IFPA	NO	Enabled		
9	FLL	N26° 04' 26.18", W080° 09' 59.19"	6.0 W	130	H	IFPA	NO	Enabled		
10	RSW	N26° 31' 47.59", W081° 46' 32.77"	2.0 W	130	H	IFPA	NO	Enabled		
11	DHP	N25° 47' 59.87", W080° 20' 56.53"	4.0 W	130	H	IFPA	NO	Enabled		
12	PBI	N26° 40' 48.20", W080° 05' 11.36"	3.0 W	130	H	IFPA	NO	Enabled		

DME DME Assessment Results for BLFRG3 path OCTAL_LISAF

Flight Check DME Selection						
Distance [NM]	Selected DMEs					Alternate
0.0	ZBV [IFPA]	DHP [IFPA]	PBI [IFPA]	PHK [IFPA]	VKZ [IFPA]	
4.0	FLL [IFPA]	PBI [IFPA]	DHP [IFPA]	PHK [IFPA]		
5.4	FLL [IFPA]	PBI [IFPA]	DHP [IFPA]	VKZ [IFPA]		
9.9	FLL [IFPA]	PBI [IFPA]	PHK [IFPA]	VKZ [IFPA]	DHP [IFPA]	
27.1	VKZ [IFPA]	PBI [IFPA]	FLL [IFPA]	PHK [IFPA]		
29.1	DHP [IFPA]	PBI [IFPA]	VKZ [IFPA]	FLL [IFPA]	PHK [IFPA]	
30.2	VKZ [IFPA]	PBI [IFPA]	FLL [IFPA]	PHK [IFPA]		
30.5	FLL [IFPA]	PHK [IFPA]				
30.6	FLL [IFPA]	PHK [IFPA]	VKZ [IFPA]			
33.5	FLL [IFPA]	PHK [IFPA]	VKZ [IFPA]	DHP [IFPA]		
35.5	VKZ [IFPA]	PHK [IFPA]	DHP [IFPA]			
36.8	LBV [IFPA]	PHK [IFPA]	VKZ [IFPA]	DHP [IFPA]		
49.8	DHP [IFPA]	PHK [IFPA]	LBV [IFPA]			
53.2	DHP [IFPA]	PHK [IFPA]	LBV [IFPA]	RSW [IFPA]		
64.7	RSW [IFPA]	LBV [IFPA]	PHK [IFPA]			
70.5	RSW [IFPA]	LBV [IFPA]				
71.1	RSW [IFPA]	LBV [IFPA]	SRQ [IFPA]			
73.6	SRQ [IFPA]	RSW [IFPA]				
75.4	SRQ [IFPA]	RSW [IFPA]	PHK [IFPA]			
80.7	RSW [IFPA]	SRQ [IFPA]	PHK [IFPA]	LBV [IFPA]		
85.4	RSW [IFPA]	SRQ [IFPA]	CYY [IFPA]	LBV [IFPA]	PHK [IFPA]	
110.0	CYY [IFPA]	PHK [IFPA]	SRQ [IFPA]	LBV [IFPA]		
112.9						
126.3	SRQ [IFPA]	LAL [IFPA]				
131.9	SRQ [IFPA]	LAL [IFPA]	PIE [IFPA]			

Inertial Drift Segments			
#	Start Location	End Location	Length [NM]
1	N27° 11' 37.73", W081° 55' 56.49"	N27° 22' 18.76", W082° 05' 00.99"	13.388

DME DME Assessment Results for BLFRG3 path OCTAL_LISAF

Available DMEs by Waypoints			
Waypoint Before	Waypoint After	DME List	Suggested DMEs
OCTAL	COREA	PHK [IFPA], ZBV [IFPA], VKZ [IFPA], LBV [IFPA], FLL [IFPA], RSW [IFPA], DHP [IFPA], PBI [IFPA]	
COREA	BLFRG	CYY [IFPA], PHK [IFPA], SRQ [IFPA], LBV [IFPA], RSW [IFPA], DHP [IFPA]	
BLFRG	COSAR	CYY [IFPA], PHK [IFPA], SRQ [IFPA], LBV [IFPA], RSW [IFPA]	
COSAR	DSIDE	LAL [IFPA], SRQ [IFPA]	
DSIDE	JSTRM	LAL [IFPA], SRQ [IFPA], PIE [IFPA]	
JSTRM	GUZDA	LAL [IFPA], SRQ [IFPA], PIE [IFPA]	
GUZDA	LISAF	LAL [IFPA], SRQ [IFPA], PIE [IFPA]	

User Data Files

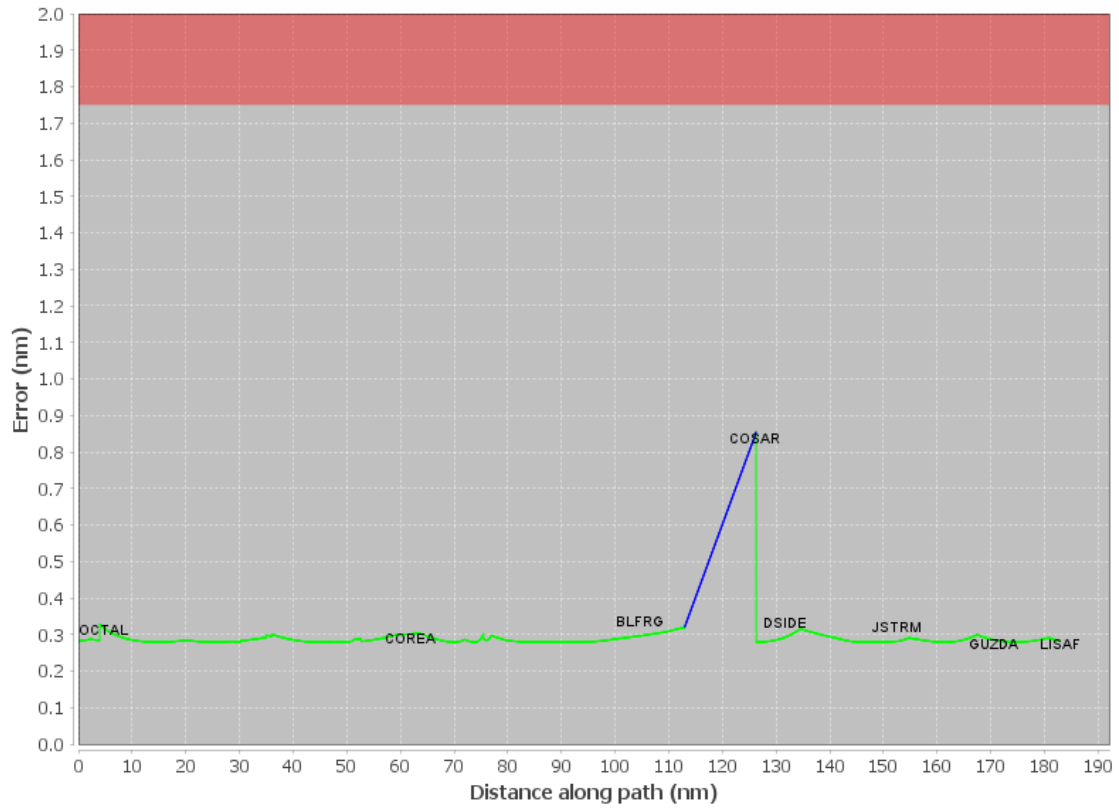
#	File Name
	None

User DMEs

#	Name	Lat/Lon	MAGVAR	Range	Elevation [ft]	Frequency	Replaces	Status
1	DHP FAA 955265-40 DHP [IFPA]	N25° 47' 59.87", W080° 20' 56.53"	4.0 W	130	5.9	113.9	DHP FAA 955265-40	
	ESV:	Bearing [True]: 307.0° to 43.0° Bearing [Mag]: 311.0° to 47.0°				Arc Distance: Out to 72.0 NM Altitude: 4000.0 to 10000.0 ft		
2	SRQ FAA 070100-39 SRQ [IFPA]	N27° 24' 25.26", W082° 33' 49.18"	5.0 W	130	19	117.0	SRQ FAA 070100-39	
	ESV:	Bearing [True]: 87.0° to 148.0° Bearing [Mag]: 92.0° to 153.0°				Arc Distance: Out to 77.0 NM Altitude: 4000.0 to 5000.0 ft		
3	PHK FAA 900991-60 PHK [IFPA]	N26° 46' 57.87", W080° 41' 29.16"	0.0 E	130	15.5	115.4	PHK FAA 900991-60	
	ESV:	Bearing [True]: 130.0° to 200.0° Bearing [Mag]: 130.0° to 200.0°				Arc Distance: Out to 75.0 NM Altitude: 4000.0 to 10000.0 ft		
4	CYY FAA 815803-26 CYY [IFPA]	N26° 09' 12.34", W081° 46' 41.17"	3.0 W	25	8.7	108.6	CYY FAA 815803-26	
	ESV:	Bearing [True]: 347.0° to 17.0° Bearing [Mag]: 350.0° to 20.0°				Arc Distance: Out to 65.0 NM Altitude: 3500.0 to 10000.0 ft		
5	ZBV FAA 051542-34 ZBV [IFPA]	N25° 42' 15.00", W079° 17' 40.00"	4.0 W	130	10	116.7	ZBV FAA 051542-34	
	ESV:	Bearing [True]: 286.0° to 26.0° Bearing [Mag]: 290.0° to 30.0°				Arc Distance: Out to 60.0 NM Altitude: 4000.0 to 18000.0 ft		
6	PHK FAA 900991-30 PHK [IFPA]	N26° 46' 57.87", W080° 41' 29.16"	0.0 E	130	15.5	115.4	PHK FAA 900991-30	
	ESV:	Bearing [True]: 235.0° to 300.0° Bearing [Mag]: 235.0° to 300.0°				Arc Distance: Out to 80.0 NM Altitude: 4000.0 to 15000.0 ft		

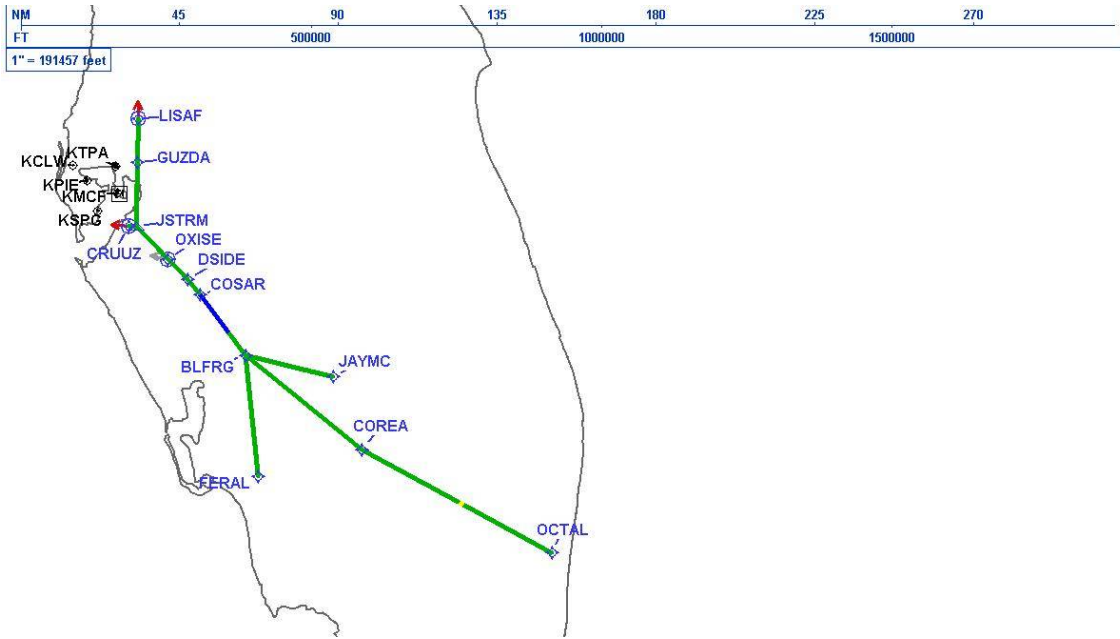
DME DME Assessment Results for BLFRG3 path OCTAL_LISAF

DME Error



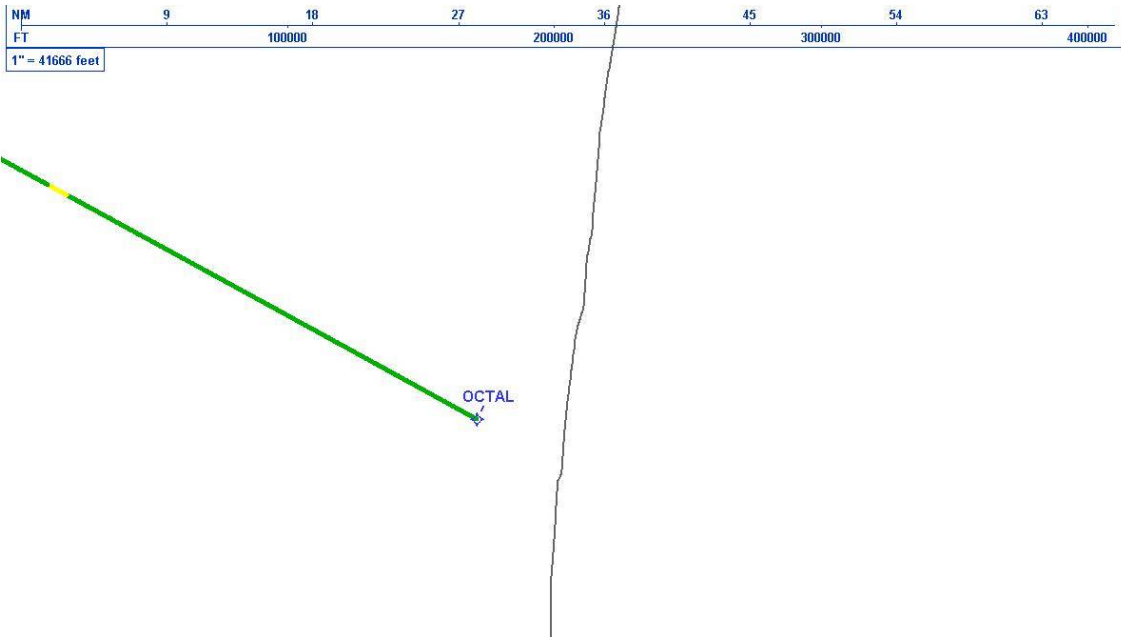
DME DME Assessment Results for BLFRG3 path OCTAL_LISAF

Graphic Depiction 1



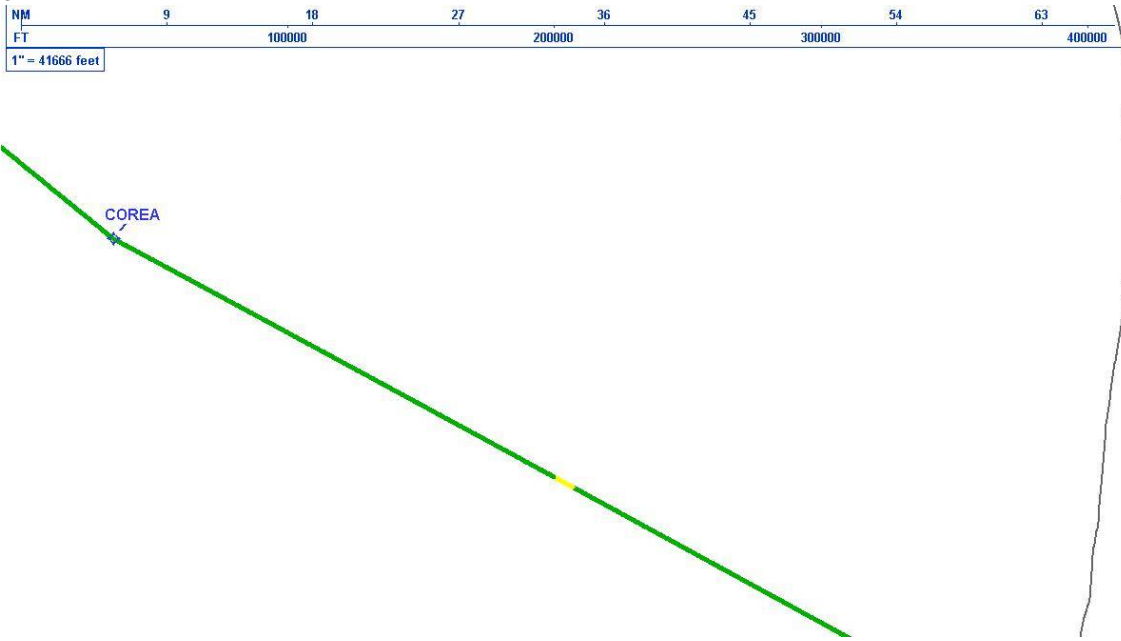
DME DME Assessment Results for BLFRG3 path OCTAL_LISAF

Graphic Depiction 2



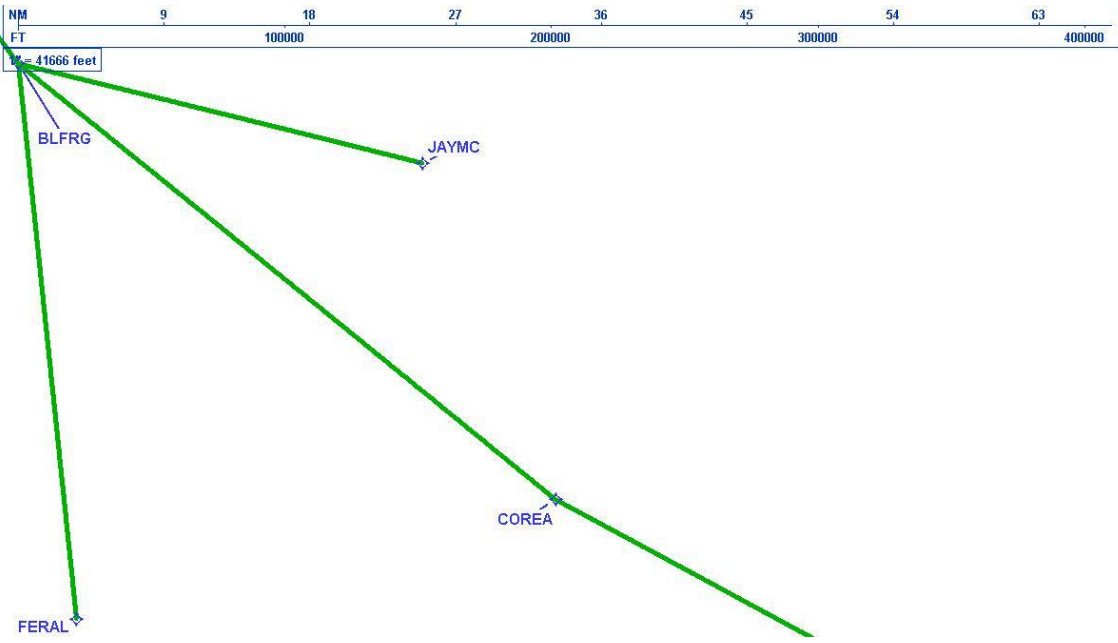
DME DME Assessment Results for BLFRG3 path OCTAL_LISAF

Graphic Depiction 3



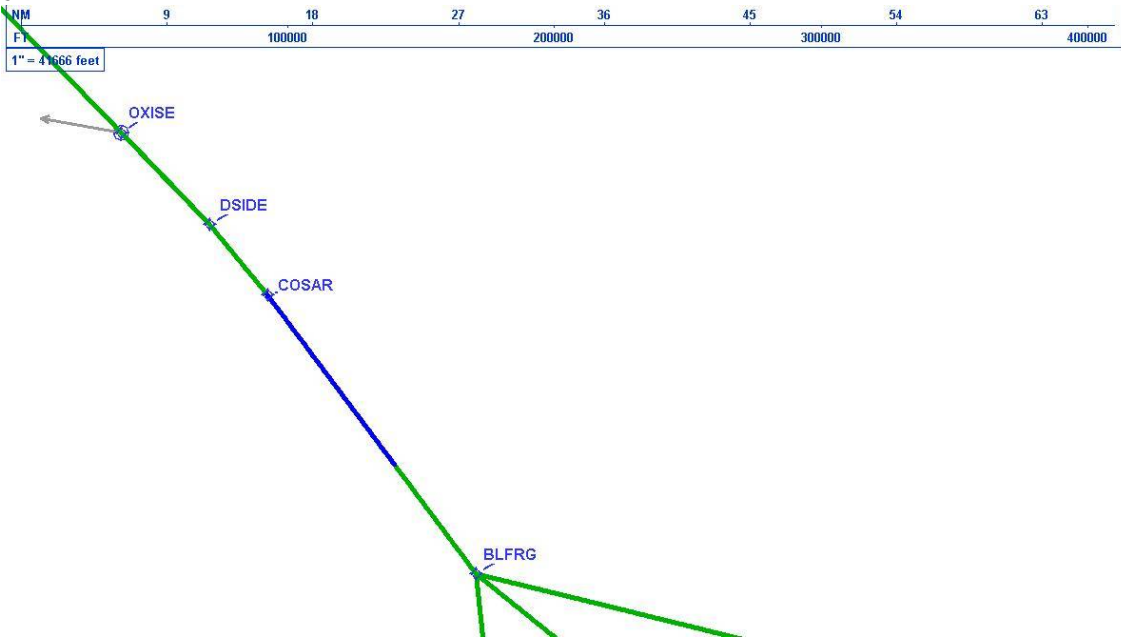
DME DME Assessment Results for BLFRG3 path OCTAL_LISAF

Graphic Depiction 4



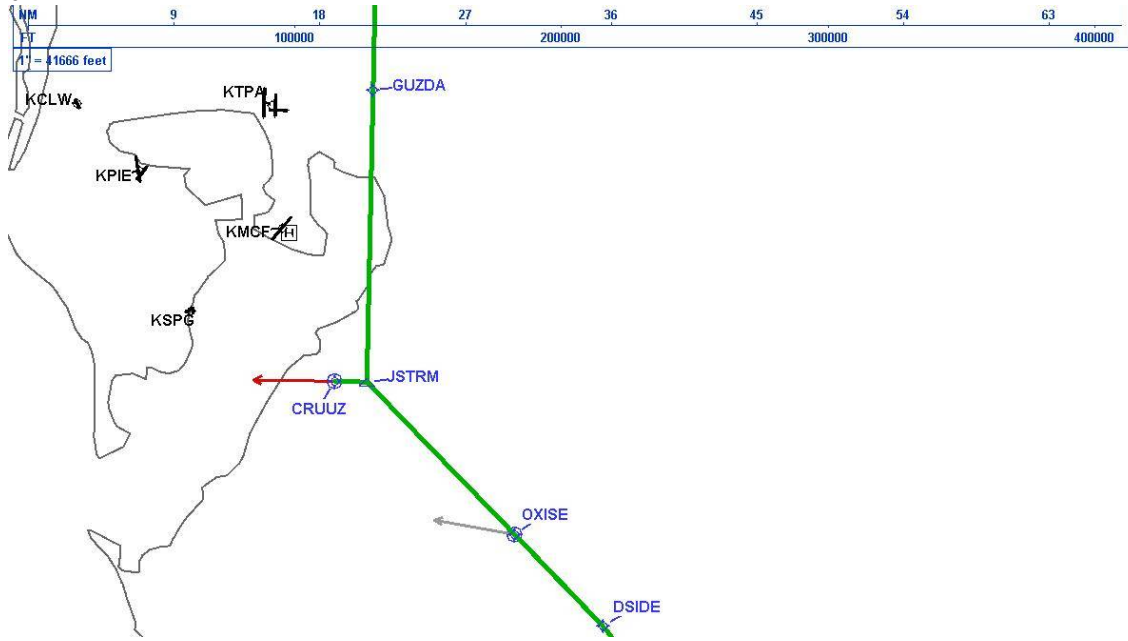
DME DME Assessment Results for BLFRG3 path OCTAL_LISAF

Graphic Depiction 5



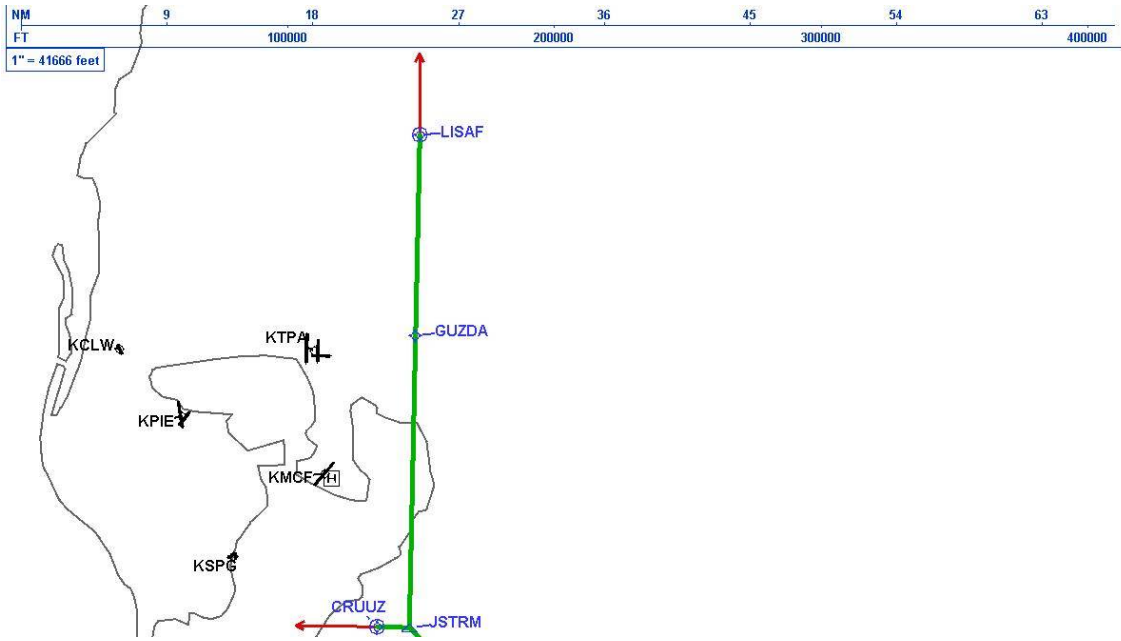
DME DME Assessment Results for BLFRG3 path OCTAL_LISAF

Graphic Depiction 6



DME DME Assessment Results for BLFRG3 path OCTAL_LISAF

Graphic Depiction 7



DME DME Assessment Results for BLFRG3 path BLFRG_FERAL

Results Summary

Flyability:	Completed
DME/DME:	Completed - No Critical DMEs
Name:	Mark CTR Thompson
Project File:	C:\Users\Mark CTR Thompson\OneDrive - Federal Aviation Administration\Desktop\RNAV Projects\RNAV Projects 2025\TPA.SRQ STARS_250417\KTPA BLFRG3 (RNAV) STAR\DME\KTPA BLFRG3 (RNAV) STAR DME 240710.tgs
Output File:	C:\Users\Mark CTR Thompson\OneDrive - Federal Aviation Administration\Desktop\RNAV Projects\RNAV Projects 2025\TPA.SRQ STARS_250417\KTPA BLFRG3 (RNAV) STAR\DME\KTPA [IFPA] BLFRG3 20240710_0843 EDT\BLFRG_FERAL\KTPA BLFRG3 RNAV STAR BLFRG FERAL 20240710_0843 EDT.pdf
Procedure Name:	BLFRG3
Software: DmeDmePlugin:	7.3.2
Date/Time:	07/10/2024 08:43 EDT
Databases:	MITRE 3DEP 3 arcsec

Failures

No Failures

Warnings

No Warnings

Informational

No Informational

Notes For Flight Check

None

Flight Plan

Name	Type	Lat/Lon	Altitude (ft)	VNAV Mode	Ground Speed (kts)	Turn Type	Leg Type
BLFRG	WP	N27° 04' 58.21", W081° 50' 18.76"	4000	VNAV	200	FLY_BY	TF
FERAL	WP	N26° 30' 47.36", W081° 46' 15.74"	4000	VNAV	200	FLY_BY	TF

Flyability

Flight Type:	RNAV_STAR
Selected Airport:	KTPA [IFPA]
Climb Gradient:	None assigned
Speeds:	200 Ground Speed to 11000 FT
	240 Ground Speed to 18000 FT
	260 Ground Speed to 24000 FT
	340 Ground Speed above 24000 FT
Descent During a Turn:	Allowed
VNAV Mode:	Flight Plan

DME DME Assessment Results for BLFRG3 path BLFRG_FERAL

DME/DME	
RNP:	RNP 2
Flight Mode:	Manual
Line of Sight (DTED Level 0 Max):	Evaluated
Inertial Drift:	Enabled
Initial Drift:	0.558 NM
INS Drift Rate:	8.0 NM/Hour
Range Mode:	OSV
RNP Edges:	Evaluated
Min DME Range:	3.0 NM
DME Types:	DME, VOR-DME, VORTAC, TACAN
DME Include Angles:	30 to 150
Critical DMEs:	Not Allowed
DoD Facilities:	Not included
Foreign Facilities:	Included
High DMEs:	Included
Low DMEs:	Included
Terminal DMEs:	Included
Flight Check DMEs:	Not selected
Higher Altitudes:	Not Evaluated
Near Maximum Altitude:	Not Evaluated
Automatic ESVs:	Not enabled
Disabled DMEs:	None

DME/DME (Continued)										
DMEs Used										
#	Name	Lat/Lon	MAGVAR	Range	Type	Source	Critical	Status	Time	Distance
1	CYY	N26° 09' 12.34", W081° 46' 41.17"	3.0 W	25	T	IFPA	NO	Enabled		
2	PHK	N26° 46' 57.87", W080° 41' 29.16"	0.0 E	130	H	IFPA	NO	Enabled		
3	SRQ	N27° 24' 25.26", W082° 33' 49.18"	5.0 W	130	DH	IFPA	NO	Enabled		
4	LBV	N26° 49' 41.47", W081° 23' 29.18"	1.0 E	40	L	IFPA	NO	Enabled		
5	RSW	N26° 31' 47.59", W081° 46' 32.77"	2.0 W	130	H	IFPA	NO	Enabled		

Flight Check DME Selection						
Distance [NM]	Selected DMEs					Alternate
0.0	CYY [IFPA]	PHK [IFPA]	RSW [IFPA]	SRQ [IFPA]	LBV [IFPA]	
13.7	RSW [IFPA]	LBV [IFPA]	SRQ [IFPA]			
13.7	CYY [IFPA]	LBV [IFPA]	PHK [IFPA]	RSW [IFPA]	SRQ [IFPA]	
30.3	SRQ [IFPA]	LBV [IFPA]	CYY [IFPA]	PHK [IFPA]		

Inertial Drift Segments			
#	Start Location	End Location	Length [NM]

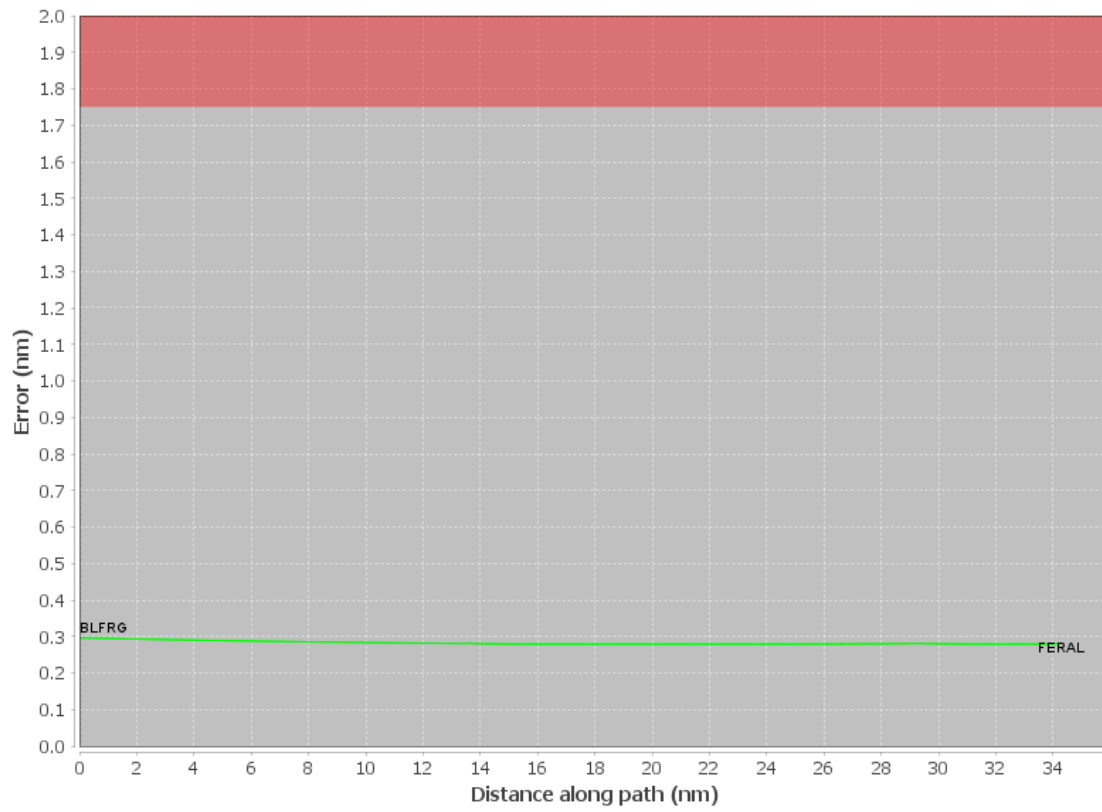
Available DMEs by Waypoints			
Waypoint Before	Waypoint After	DME List	Suggested DMEs
BLFRG	FERAL	CYY [IFPA], PHK [IFPA], SRQ [IFPA], LBV [IFPA], RSW [IFPA]	

DME DME Assessment Results for BLFRG3 path BLFRG_FERAL

User Data Files								
#	File Name							
None								
User DMEs								
#	Name	Lat/Lon	MAGVAR	Range	Elevation [ft]	Frequency	Replaces	Status
1	DHP FAA 955265-40 DHP [IFPA]	N25° 47' 59.87", W080° 20' 56.53"	4.0 W	130	5.9	113.9	DHP FAA 955265-40	
ESV:		Bearing [True]: 307.0° to 43.0° Bearing [Mag]: 311.0° to 47.0°				Arc Distance: Out to 72.0 NM Altitude: 4000.0 to 10000.0 ft		
2	SRQ FAA 070100-39 SRQ [IFPA]	N27° 24' 25.26", W082° 33' 49.18"	5.0 W	130	19	117.0	SRQ FAA 070100-39	
ESV:		Bearing [True]: 87.0° to 148.0° Bearing [Mag]: 92.0° to 153.0°				Arc Distance: Out to 77.0 NM Altitude: 4000.0 to 5000.0 ft		
3	PHK FAA 900991-60 PHK [IFPA]	N26° 46' 57.87", W080° 41' 29.16"	0.0 E	130	15.5	115.4	PHK FAA 900991-60	
ESV:		Bearing [True]: 130.0° to 200.0° Bearing [Mag]: 130.0° to 200.0°				Arc Distance: Out to 75.0 NM Altitude: 4000.0 to 10000.0 ft		
4	CYY FAA 815803-26 CYY [IFPA]	N26° 09' 12.34", W081° 46' 41.17"	3.0 W	25	8.7	108.6	CYY FAA 815803-26	
ESV:		Bearing [True]: 347.0° to 17.0° Bearing [Mag]: 350.0° to 20.0°				Arc Distance: Out to 65.0 NM Altitude: 3500.0 to 10000.0 ft		
5	ZBV FAA 051542-34 ZBV [IFPA]	N25° 42' 15.00", W079° 17' 40.00"	4.0 W	130	10	116.7	ZBV FAA 051542-34	
ESV:		Bearing [True]: 286.0° to 26.0° Bearing [Mag]: 290.0° to 30.0°				Arc Distance: Out to 60.0 NM Altitude: 4000.0 to 18000.0 ft		
6	PHK FAA 900991-30 PHK [IFPA]	N26° 46' 57.87", W080° 41' 29.16"	0.0 E	130	15.5	115.4	PHK FAA 900991-30	
ESV:		Bearing [True]: 235.0° to 300.0° Bearing [Mag]: 235.0° to 300.0°				Arc Distance: Out to 80.0 NM Altitude: 4000.0 to 15000.0 ft		

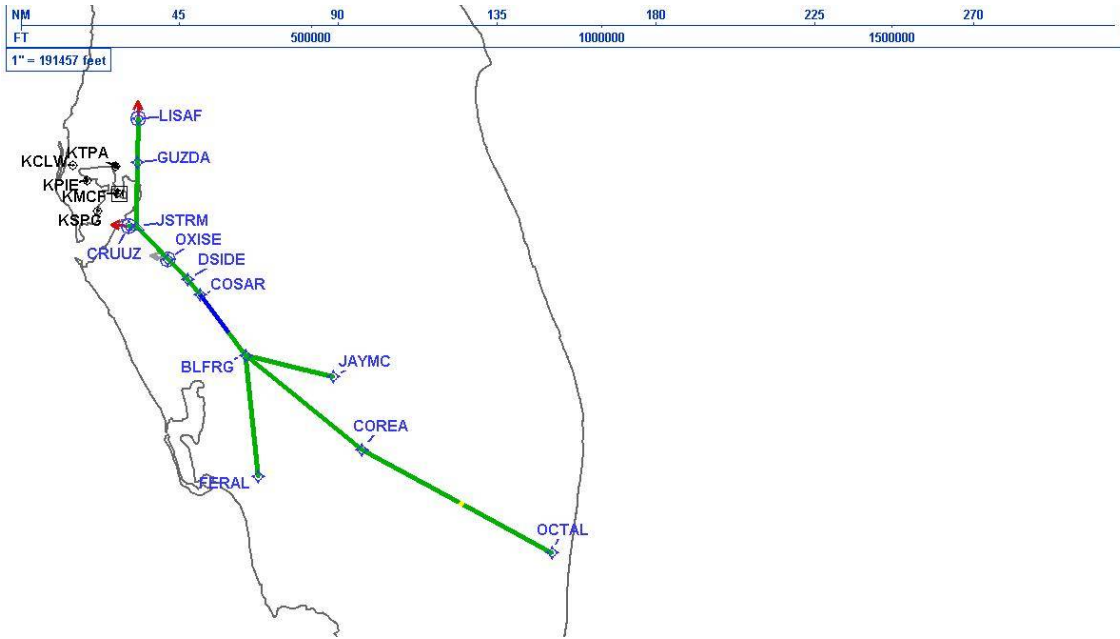
DME DME Assessment Results for BLFRG3 path BLFRG_FERAL

DME Error



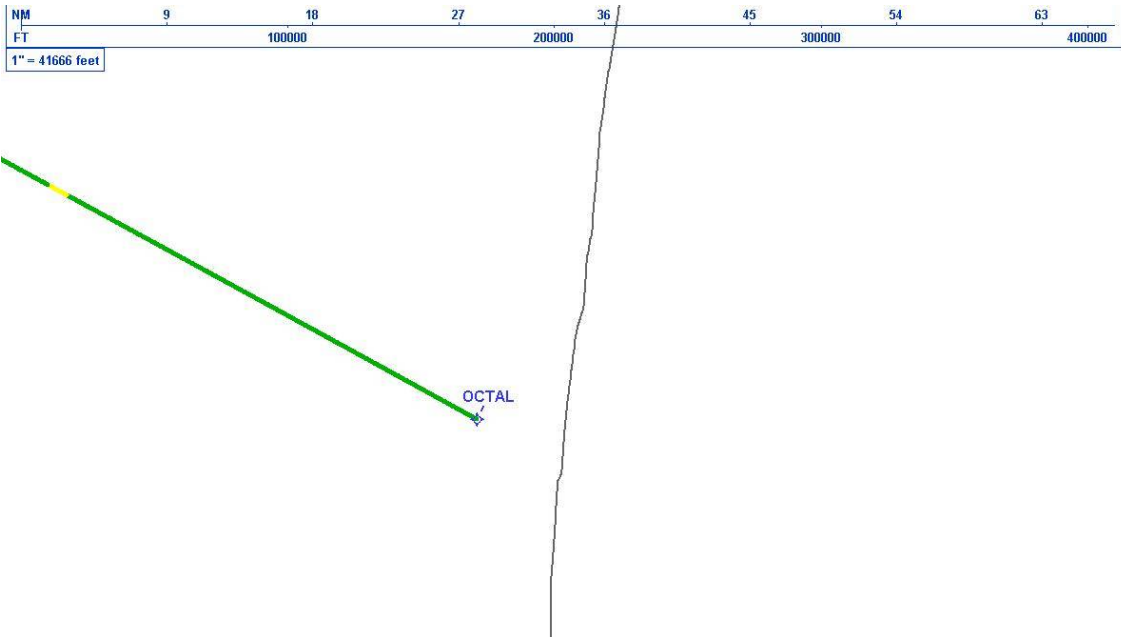
DME DME Assessment Results for BLFRG3 path BLFRG_FERAL

Graphic Depiction 1



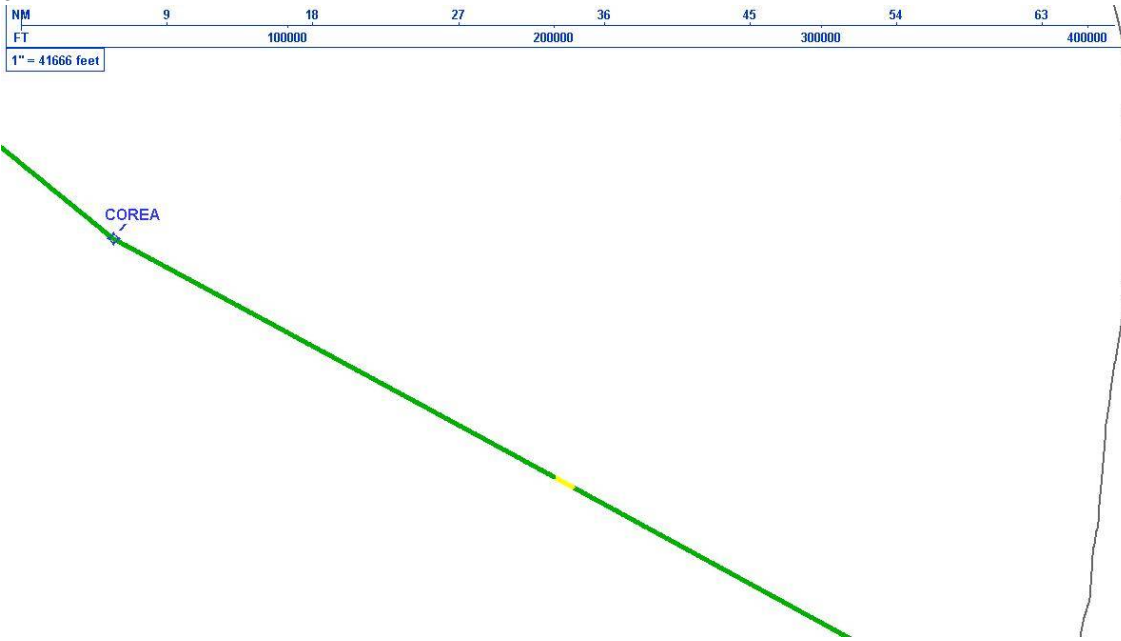
DME DME Assessment Results for BLFRG3 path BLFRG_FERAL

Graphic Depiction 2



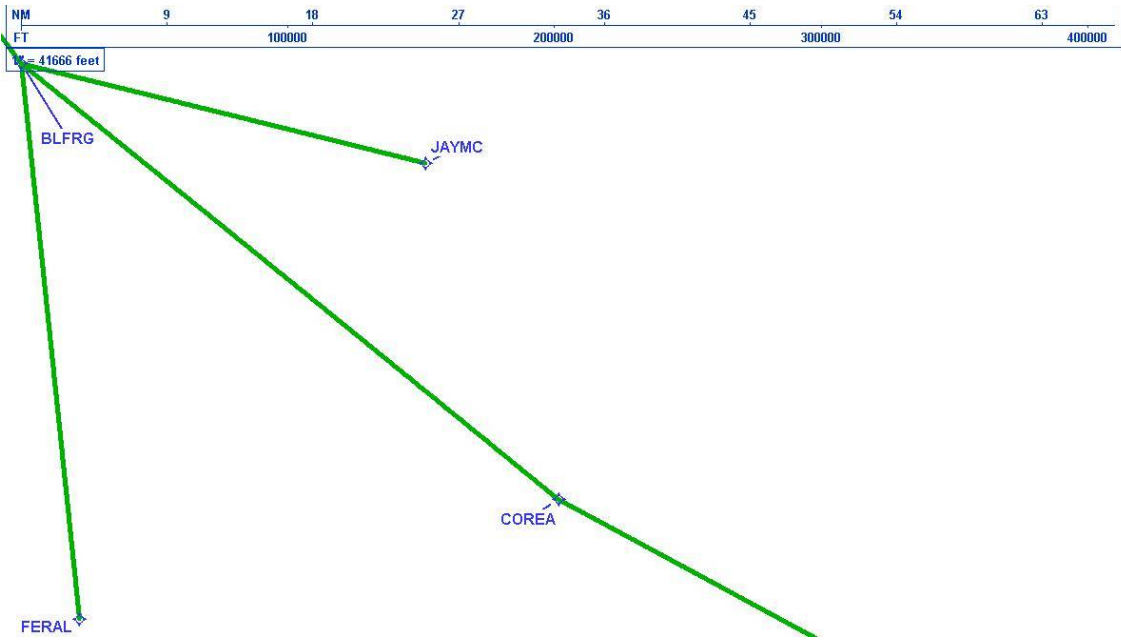
DME DME Assessment Results for BLFRG3 path BLFRG_FERAL

Graphic Depiction 3



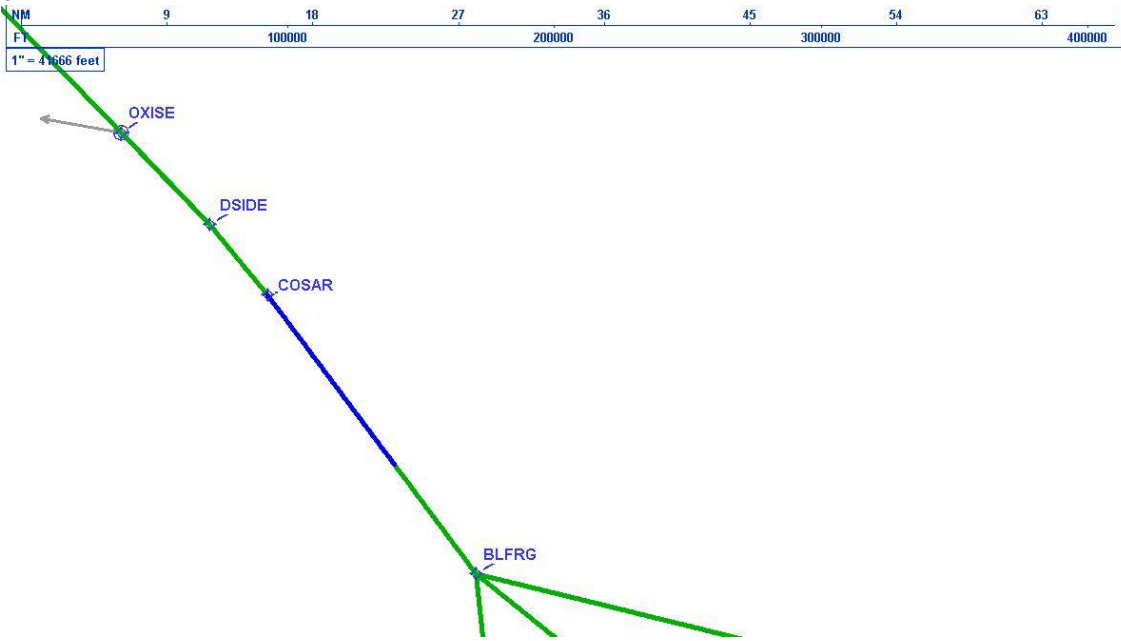
DME DME Assessment Results for BLFRG3 path BLFRG_FERAL

Graphic Depiction 4



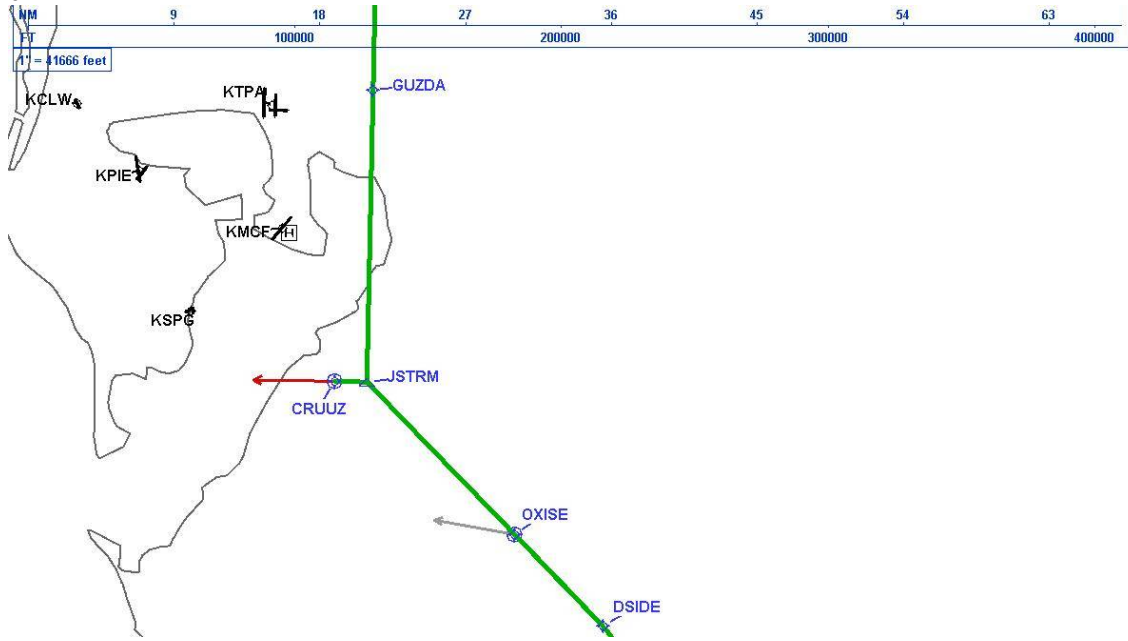
DME DME Assessment Results for BLFRG3 path BLFRG_FERAL

Graphic Depiction 5



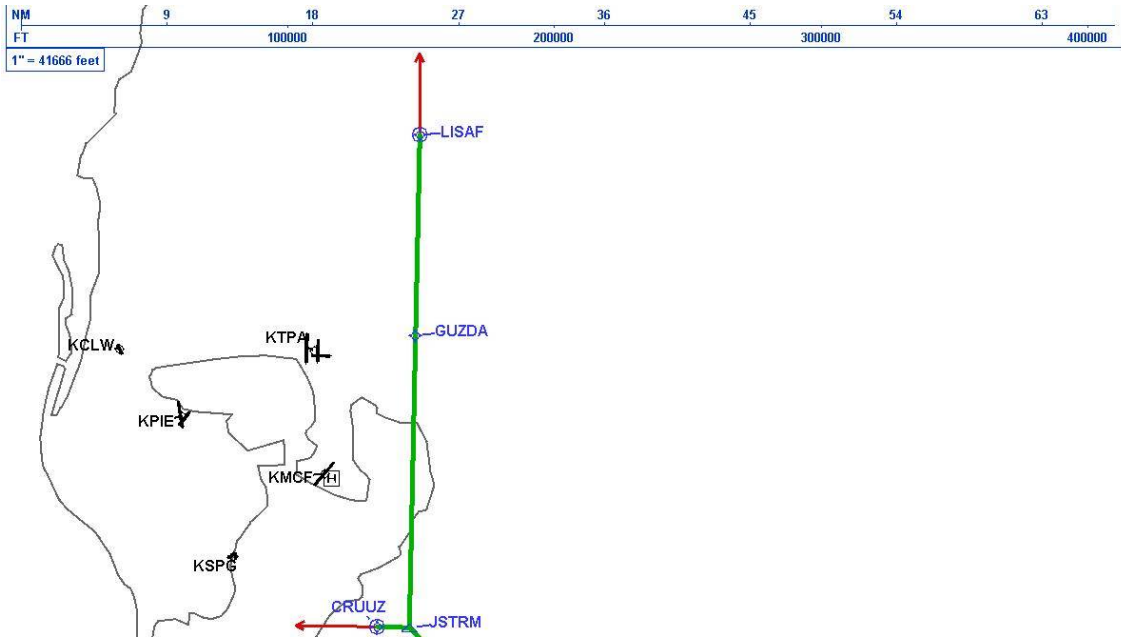
DME DME Assessment Results for BLFRG3 path BLFRG_FERAL

Graphic Depiction 6



DME DME Assessment Results for BLFRG3 path BLFRG_FERAL

Graphic Depiction 7



DME DME Assessment Results for BLFRG3 path BLFRG_JAYMC

Results Summary

Flyability:	Completed
DME/DME:	Completed - No Critical DMEs
Name:	Mark CTR Thompson
Project File:	C:\Users\Mark CTR Thompson\OneDrive - Federal Aviation Administration\Desktop\RNAV Projects\RNAV Projects 2025\TPA.SRQ STARS_250417\KTPA BLFRG3 (RNAV) STAR\DME\KTPA BLFRG3 (RNAV) STAR DME 240710.tgs
Output File:	C:\Users\Mark CTR Thompson\OneDrive - Federal Aviation Administration\Desktop\RNAV Projects\RNAV Projects 2025\TPA.SRQ STARS_250417\KTPA BLFRG3 (RNAV) STAR\DME\KTPA [IFPA] BLFRG3 20240710_0843 EDT\BLFRG_JAYMC\KTPA BLFRG3 RNAV STAR BLFRG JAYMC 20240710_0843 EDT.pdf
Procedure Name:	BLFRG3
Software: DmeDmePlugin:	7.3.2
Date/Time:	07/10/2024 08:43 EDT
Databases:	MITRE 3DEP 3 arcsec

Failures

No Failures

Warnings

No Warnings

Informational

No Informational

Notes For Flight Check

None

Flight Plan

Name	Type	Lat/Lon	Altitude (ft)	VNAV Mode	Ground Speed (kts)	Turn Type	Leg Type
BLFRG	WP	N27° 04' 58.21", W081° 50' 18.76"	4000	VNAV	200	FLY_BY	TF
JAYMC	WP	N26° 58' 51.00", W081° 22' 08.00"	4000	VNAV	200	FLY_BY	TF

Flyability

Flight Type:	RNAV_STAR
Selected Airport:	KTPA [IFPA]
Climb Gradient:	None assigned
Speeds:	200 Ground Speed to 11000 FT
	240 Ground Speed to 18000 FT
	260 Ground Speed to 24000 FT
	340 Ground Speed above 24000 FT
Descent During a Turn:	Allowed
VNAV Mode:	Flight Plan

DME DME Assessment Results for BLFRG3 path BLFRG_JAYMC

DME/DME	
RNP:	RNP 2
Flight Mode:	Manual
Line of Sight (DTED Level 0 Max):	Evaluated
Inertial Drift:	Enabled
Initial Drift:	0.558 NM
INS Drift Rate:	8.0 NM/Hour
Range Mode:	OSV
RNP Edges:	Evaluated
Min DME Range:	3.0 NM
DME Types:	DME, VOR-DME, VORTAC, TACAN
DME Include Angles:	30 to 150
Critical DMEs:	Not Allowed
DoD Facilities:	Not included
Foreign Facilities:	Included
High DMEs:	Included
Low DMEs:	Included
Terminal DMEs:	Included
Flight Check DMEs:	Not selected
Higher Altitudes:	Not Evaluated
Near Maximum Altitude:	Not Evaluated
Automatic ESVs:	Not enabled
Disabled DMEs:	None

DME/DME (Continued)										
DMEs Used										
#	Name	Lat/Lon	MAGVAR	Range	Type	Source	Critical	Status	Time	Distance
1	CYY	N26° 09' 12.34", W081° 46' 41.17"	3.0 W	25	T	IFPA	NO	Enabled		
2	PHK	N26° 46' 57.87", W080° 41' 29.16"	0.0 E	130	H	IFPA	NO	Enabled		
3	SRQ	N27° 24' 25.26", W082° 33' 49.18"	5.0 W	130	DH	IFPA	NO	Enabled		
4	LBV	N26° 49' 41.47", W081° 23' 29.18"	1.0 E	40	L	IFPA	NO	Enabled		
5	RSW	N26° 31' 47.59", W081° 46' 32.77"	2.0 W	130	H	IFPA	NO	Enabled		

Flight Check DME Selection						
Distance [NM]	Selected DMEs					Alternate
0.0	CYY [IFPA]	PHK [IFPA]	RSW [IFPA]	SRQ [IFPA]	LBV [IFPA]	
19.2	RSW [IFPA]	SRQ [IFPA]	PHK [IFPA]	LBV [IFPA]		
21.2	RSW [IFPA]	SRQ [IFPA]	LBV [IFPA]			
24.1	SRQ [IFPA]	RSW [IFPA]	PHK [IFPA]	LBV [IFPA]		
24.6	LBV [IFPA]	PHK [IFPA]	RSW [IFPA]			
24.8	SRQ [IFPA]	RSW [IFPA]	LBV [IFPA]	PHK [IFPA]		

Inertial Drift Segments			
#	Start Location	End Location	Length [NM]

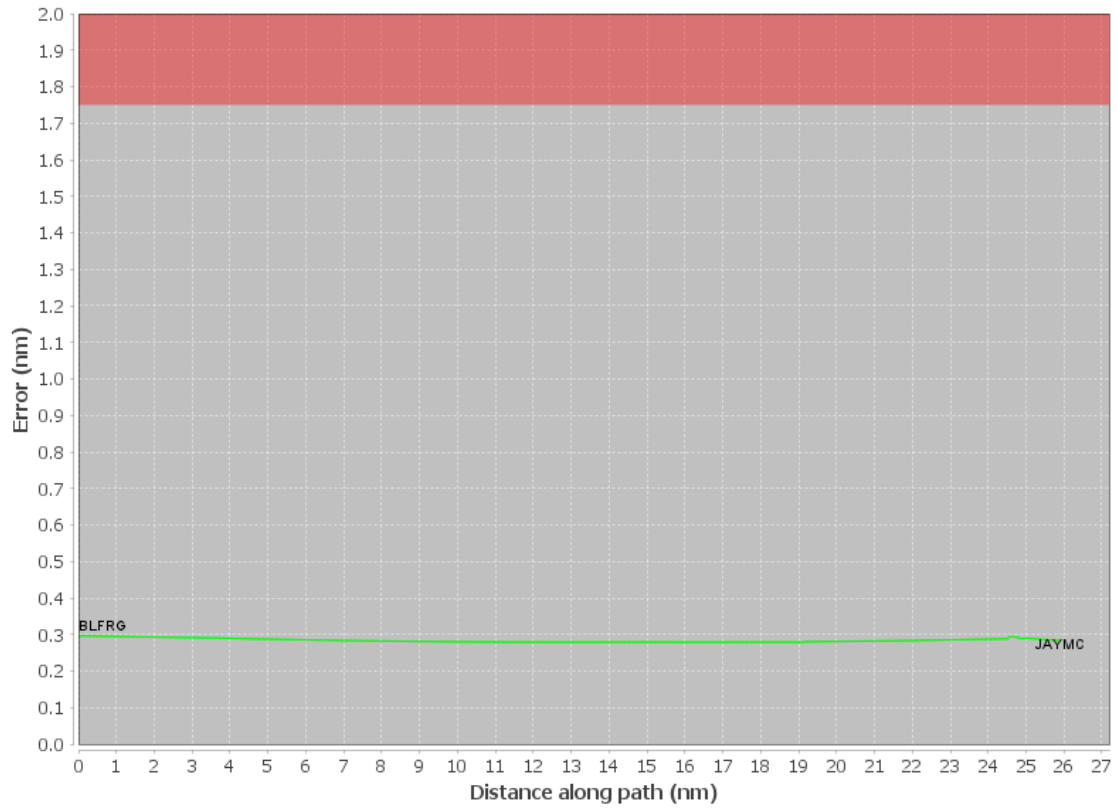
Available DMEs by Waypoints			
Waypoint Before	Waypoint After	DME List	Suggested DMEs
BLFRG	JAYMC	CYY [IFPA], PHK [IFPA], SRQ [IFPA], LBV [IFPA], RSW [IFPA]	

DME DME Assessment Results for BLFRG3 path BLFRG_JAYMC

User Data Files								
#	File Name							
None								
User DMEs								
#	Name	Lat/Lon	MAGVAR	Range	Elevation [ft]	Frequency	Replaces	Status
1	DHP FAA 955265-40 DHP [IFPA]	N25° 47' 59.87", W080° 20' 56.53"	4.0 W	130	5.9	113.9	DHP FAA 955265-40	
ESV:		Bearing [True]: 307.0° to 43.0° Bearing [Mag]: 311.0° to 47.0°				Arc Distance: Out to 72.0 NM Altitude: 4000.0 to 10000.0 ft		
2	SRQ FAA 070100-39 SRQ [IFPA]	N27° 24' 25.26", W082° 33' 49.18"	5.0 W	130	19	117.0	SRQ FAA 070100-39	
ESV:		Bearing [True]: 87.0° to 148.0° Bearing [Mag]: 92.0° to 153.0°				Arc Distance: Out to 77.0 NM Altitude: 4000.0 to 5000.0 ft		
3	PHK FAA 900991-60 PHK [IFPA]	N26° 46' 57.87", W080° 41' 29.16"	0.0 E	130	15.5	115.4	PHK FAA 900991-60	
ESV:		Bearing [True]: 130.0° to 200.0° Bearing [Mag]: 130.0° to 200.0°				Arc Distance: Out to 75.0 NM Altitude: 4000.0 to 10000.0 ft		
4	CYY FAA 815803-26 CYY [IFPA]	N26° 09' 12.34", W081° 46' 41.17"	3.0 W	25	8.7	108.6	CYY FAA 815803-26	
ESV:		Bearing [True]: 347.0° to 17.0° Bearing [Mag]: 350.0° to 20.0°				Arc Distance: Out to 65.0 NM Altitude: 3500.0 to 10000.0 ft		
5	ZBV FAA 051542-34 ZBV [IFPA]	N25° 42' 15.00", W079° 17' 40.00"	4.0 W	130	10	116.7	ZBV FAA 051542-34	
ESV:		Bearing [True]: 286.0° to 26.0° Bearing [Mag]: 290.0° to 30.0°				Arc Distance: Out to 60.0 NM Altitude: 4000.0 to 18000.0 ft		
6	PHK FAA 900991-30 PHK [IFPA]	N26° 46' 57.87", W080° 41' 29.16"	0.0 E	130	15.5	115.4	PHK FAA 900991-30	
ESV:		Bearing [True]: 235.0° to 300.0° Bearing [Mag]: 235.0° to 300.0°				Arc Distance: Out to 80.0 NM Altitude: 4000.0 to 15000.0 ft		

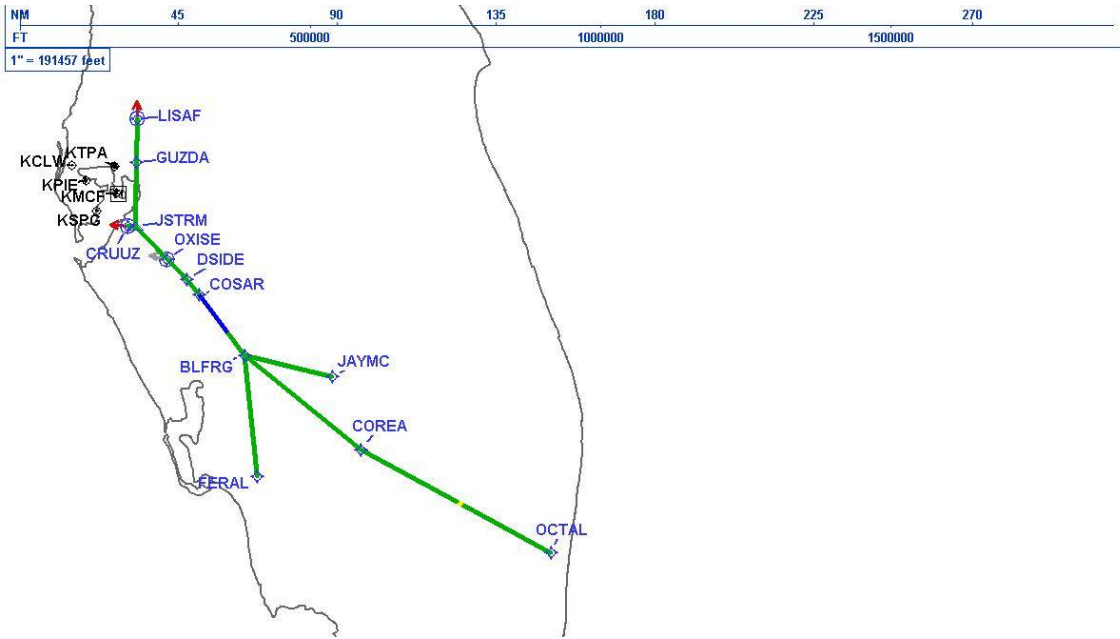
DME DME Assessment Results for BLFRG3 path BLFRG_JAYMC

DME Error



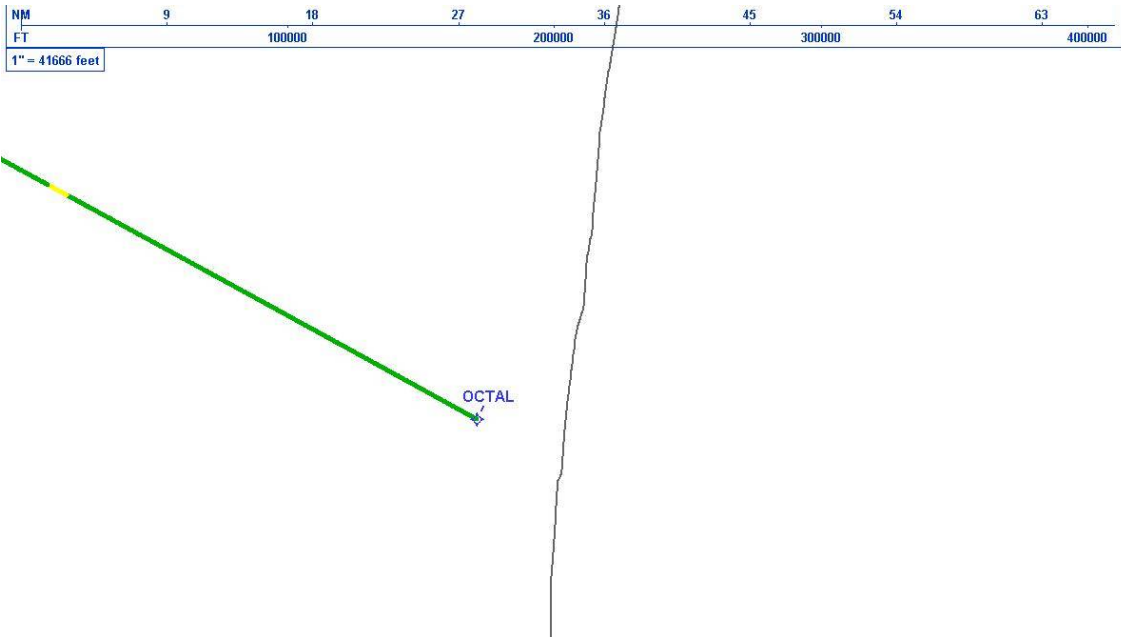
DME DME Assessment Results for BLFRG3 path BLFRG_JAYMC

Graphic Depiction 1



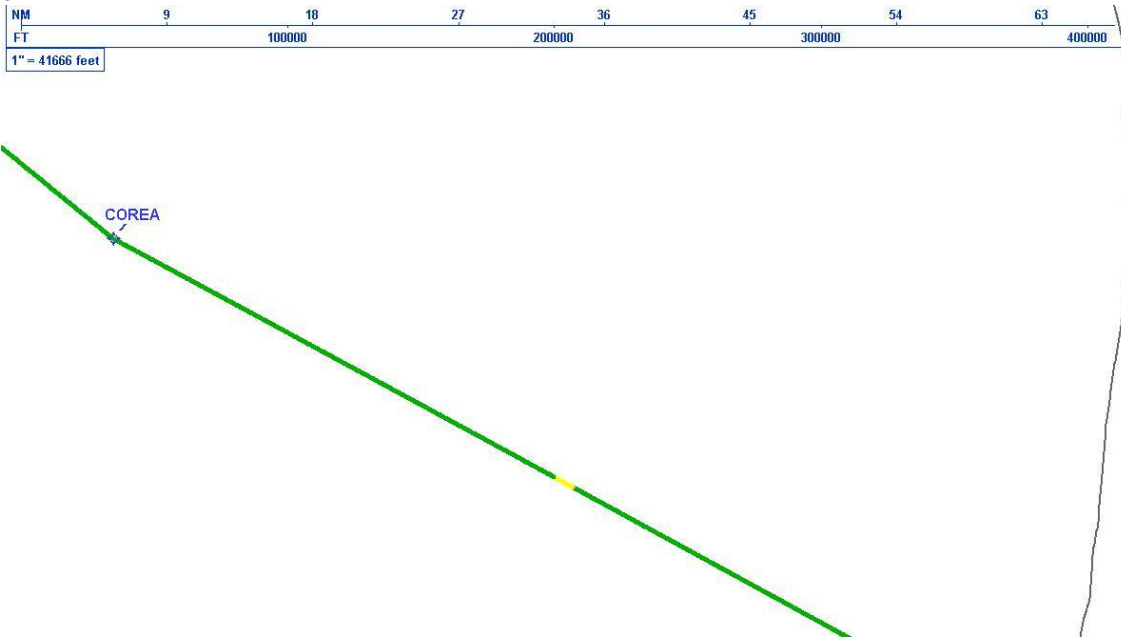
DME DME Assessment Results for BLFRG3 path BLFRG_JAYMC

Graphic Depiction 2



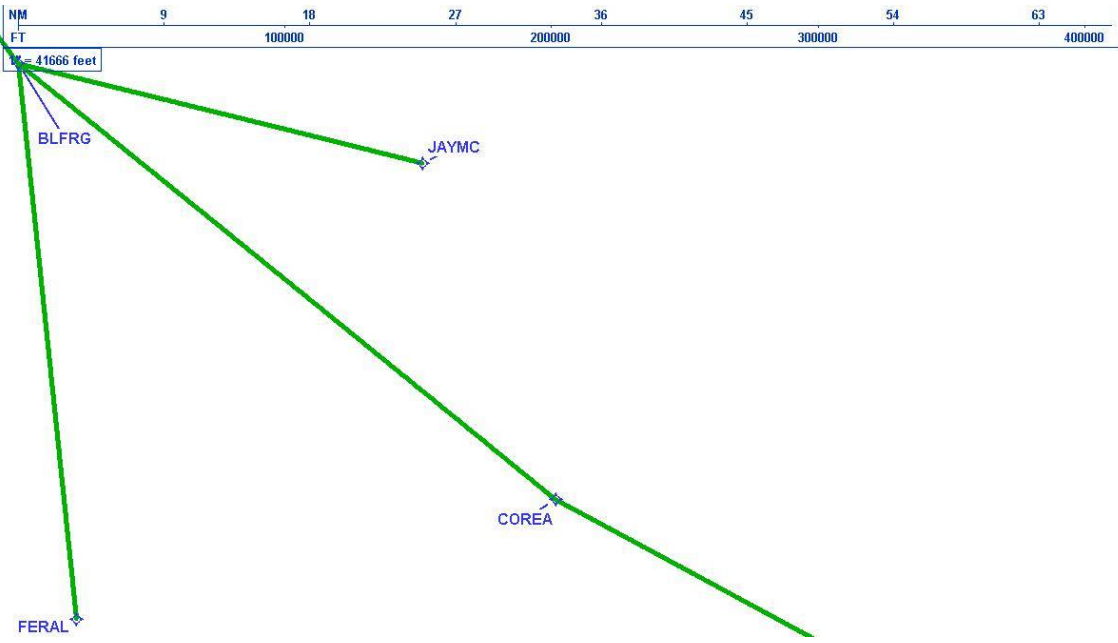
DME DME Assessment Results for BLFRG3 path BLFRG_JAYMC

Graphic Depiction 3



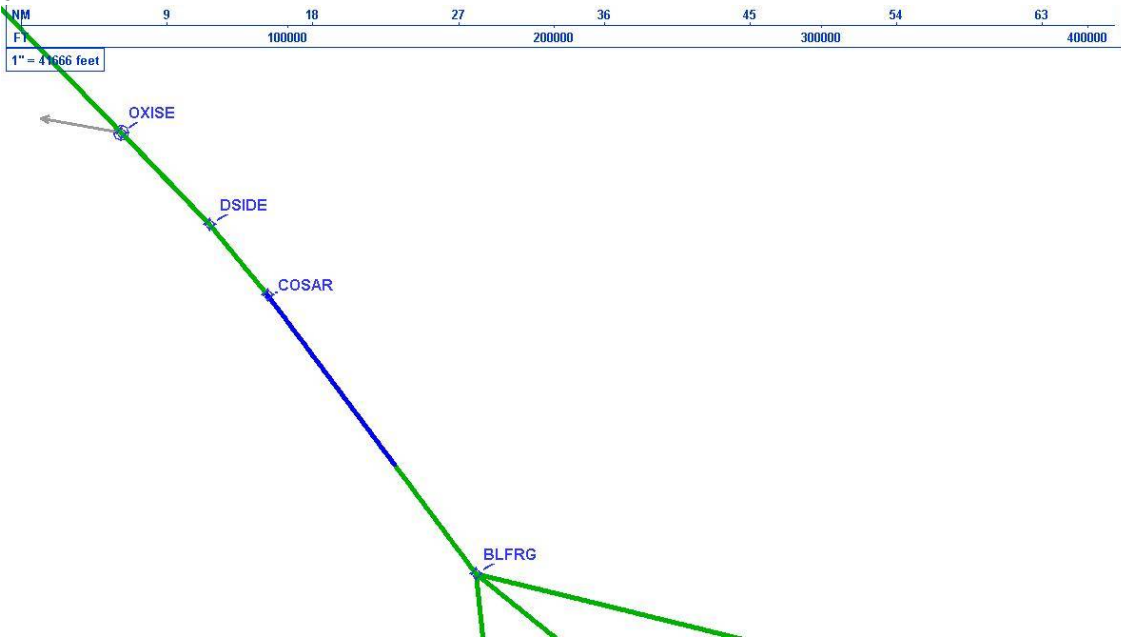
DME DME Assessment Results for BLFRG3 path BLFRG_JAYMC

Graphic Depiction 4



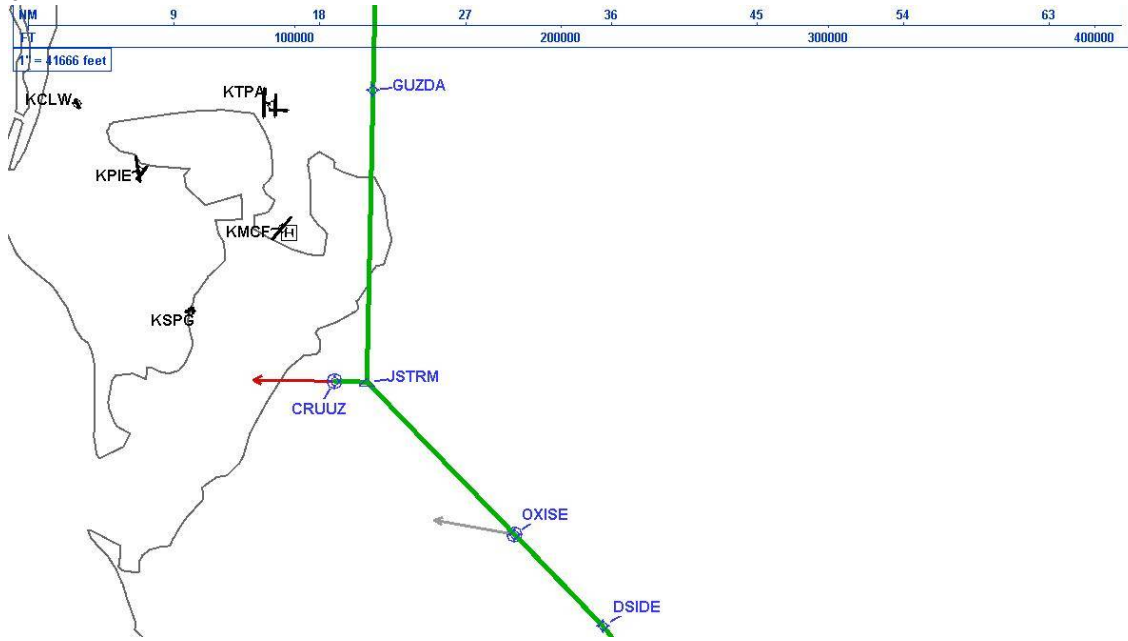
DME DME Assessment Results for BLFRG3 path BLFRG_JAYMC

Graphic Depiction 5



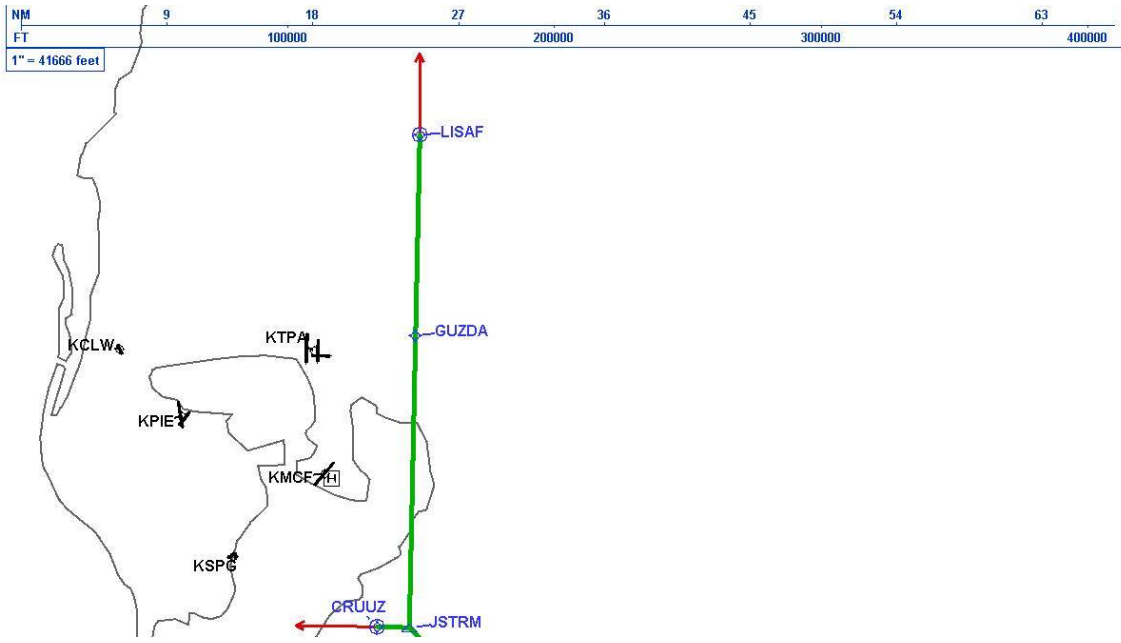
DME DME Assessment Results for BLFRG3 path BLFRG_JAYMC

Graphic Depiction 6



DME DME Assessment Results for BLFRG3 path BLFRG_JAYMC

Graphic Depiction 7



DME DME Assessment Results for BLFRG3 path BLFRG_OCTAL

Results Summary

Flyability:	Completed
DME/DME:	Completed - No Critical DMEs
Name:	Mark CTR Thompson
Project File:	C:\Users\Mark CTR Thompson\OneDrive - Federal Aviation Administration\Desktop\RNAV Projects\RNAV Projects 2025\TPA.SRQ STARS_250417\KTPA BLFRG3 (RNAV) STAR\DME\KTPA BLFRG3 (RNAV) STAR DME 240710.tgs
Output File:	C:\Users\Mark CTR Thompson\OneDrive - Federal Aviation Administration\Desktop\RNAV Projects\RNAV Projects 2025\TPA.SRQ STARS_250417\KTPA BLFRG3 (RNAV) STAR\DME\KTPA [IFPA] BLFRG3 20240710_0843 EDT\BLFRG_OCTAL\KTPA BLFRG3 RNAV STAR BLFRG OCTAL 20240710_0843 EDT.pdf
Procedure Name:	BLFRG3
Software: DmeDmePlugin:	7.3.2
Date/Time:	07/10/2024 08:43 EDT
Databases:	MITRE 3DEP 3 arcsec

Failures

No Failures

Warnings

No Warnings

Informational

No Informational

Notes For Flight Check

None

Flight Plan

Name	Type	Lat/Lon	Altitude (ft)	VNAV Mode	Ground Speed (kts)	Turn Type	Leg Type
BLFRG	WP	N27° 04' 58.21", W081° 50' 18.76"	4000	VNAV	200	FLY_BY	TF
COREA	WP	N26° 38' 08.96", W081° 12' 52.29"	4000	VNAV	200	FLY_BY	TF
OCTAL	WP	N26° 09' 01.92", W080° 12' 11.60"	4000	VNAV	200	FLY_BY	TF

Flyability

Flight Type:	RNAV_STAR
Selected Airport:	KTPA [IFPA]
Climb Gradient:	None assigned
Speeds:	200 Ground Speed to 11000 FT
	240 Ground Speed to 18000 FT
	260 Ground Speed to 24000 FT
	340 Ground Speed above 24000 FT
Descent During a Turn:	Allowed
VNAV Mode:	Flight Plan

DME DME Assessment Results for BLFRG3 path BLFRG_OCTAL

DME/DME	
RNP:	RNP 2
Flight Mode:	Manual
Line of Sight (DTED Level 0 Max):	Evaluated
Inertial Drift:	Enabled
Initial Drift:	0.558 NM
INS Drift Rate:	8.0 NM/Hour
Range Mode:	OSV
RNP Edges:	Evaluated
Min DME Range:	3.0 NM
DME Types:	DME, VOR-DME, VORTAC, TACAN
DME Include Angles:	30 to 150
Critical DMEs:	Not Allowed
DoD Facilities:	Not included
Foreign Facilities:	Included
High DMEs:	Included
Low DMEs:	Included
Terminal DMEs:	Included
Flight Check DMEs:	Not selected
Higher Altitudes:	Not Evaluated
Near Maximum Altitude:	Not Evaluated
Automatic ESVs:	Not enabled
Disabled DMEs:	None

DME/DME (Continued)										
DMEs Used										
#	Name	Lat/Lon	MAGVAR	Range	Type	Source	Critical	Status	Time	Distance
1	CYY	N26° 09' 12.34", W081° 46' 41.17"	3.0 W	25	T	IFPA	NO	Enabled		
2	PHK	N26° 46' 57.87", W080° 41' 29.16"	0.0 E	130	H	IFPA	NO	Enabled		
3	SRQ	N27° 24' 25.26", W082° 33' 49.18"	5.0 W	130	DH	IFPA	NO	Enabled		
4	VKZ	N25° 45' 06.85", W080° 09' 16.00"	4.0 W	130	DH	IFPA	NO	Enabled		
5	ZBV	N25° 42' 15.00", W079° 17' 40.00"	4.0 W	130	H	IFPA	NO	Enabled		
6	LBV	N26° 49' 41.47", W081° 23' 29.18"	1.0 E	40	L	IFPA	NO	Enabled		
7	FLL	N26° 04' 26.18", W080° 09' 59.19"	6.0 W	130	H	IFPA	NO	Enabled		
8	RSW	N26° 31' 47.59", W081° 46' 32.77"	2.0 W	130	H	IFPA	NO	Enabled		
9	DHP	N25° 47' 59.87", W080° 20' 56.53"	4.0 W	130	H	IFPA	NO	Enabled		
10	PBI	N26° 40' 48.20", W080° 05' 11.36"	3.0 W	130	H	IFPA	NO	Enabled		

DME DME Assessment Results for BLFRG3 path BLFRG_OCTAL

Flight Check DME Selection						
Distance [NM]	Selected DMEs					Alternate
0.0	CYY [IFPA]	PHK [IFPA]	RSW [IFPA]	SRQ [IFPA]	LBV [IFPA]	
19.3	RSW [IFPA]	SRQ [IFPA]	LBV [IFPA]	PHK [IFPA]		
23.9	RSW [IFPA]	SRQ [IFPA]	PHK [IFPA]			
29.3	SRQ [IFPA]	RSW [IFPA]				
31.1	SRQ [IFPA]	RSW [IFPA]	LBV [IFPA]			
33.6	RSW [IFPA]	LBV [IFPA]				
34.2	RSW [IFPA]	LBV [IFPA]	PHK [IFPA]			
40.0	RSW [IFPA]	LBV [IFPA]	PHK [IFPA]	DHP [IFPA]		
51.5	DHP [IFPA]	PHK [IFPA]	LBV [IFPA]			
54.8	DHP [IFPA]	PHK [IFPA]	VKZ [IFPA]	LBV [IFPA]		
67.9	VKZ [IFPA]	PHK [IFPA]	DHP [IFPA]			
69.2	FLL [IFPA]	PHK [IFPA]	VKZ [IFPA]	DHP [IFPA]		
71.2	FLL [IFPA]	PHK [IFPA]	VKZ [IFPA]			
74.0	FLL [IFPA]	PHK [IFPA]				
74.1	VKZ [IFPA]	PBI [IFPA]	FLL [IFPA]	PHK [IFPA]		
74.4	DHP [IFPA]	PBI [IFPA]	VKZ [IFPA]	FLL [IFPA]	PHK [IFPA]	
75.5	VKZ [IFPA]	PBI [IFPA]	FLL [IFPA]	PHK [IFPA]		
77.5	VKZ [IFPA]	PBI [IFPA]	DHP [IFPA]	FLL [IFPA]	PHK [IFPA]	
94.8	FLL [IFPA]	PBI [IFPA]	VKZ [IFPA]	DHP [IFPA]		
99.2	FLL [IFPA]	PBI [IFPA]	PHK [IFPA]	DHP [IFPA]		
100.7	ZBV [IFPA]	PBI [IFPA]	DHP [IFPA]	FLL [IFPA]	PHK [IFPA]	VKZ [IFPA]
102.2	ZBV [IFPA]	PBI [IFPA]	DHP [IFPA]	VKZ [IFPA]	PHK [IFPA]	

Inertial Drift Segments			
#	Start Location	End Location	Length [NM]

Available DMEs by Waypoints			
Waypoint Before	Waypoint After	DME List	Suggested DMEs
BLFRG	COREA	CYY [IFPA], PHK [IFPA], SRQ [IFPA], LBV [IFPA], RSW [IFPA], DHP [IFPA]	
COREA	OCTAL	PHK [IFPA], VKZ [IFPA], ZBV [IFPA], LBV [IFPA], FLL [IFPA], RSW [IFPA], DHP [IFPA], PBI [IFPA]	

DME DME Assessment Results for BLFRG3 path BLFRG_OCTAL

User Data Files

#	File Name
None	

None

User DMEs

#	Name	Lat/Lon	MAGVAR	Range	Elevation [ft]	Frequency	Replaces	Status
1	DHP FAA 955265-40 DHP [IFPA]	N25° 47' 59.87", W080° 20' 56.53"	4.0 W	130	5.9	113.9	DHP FAA 955265-40	
ESV:		Bearing [True]: 307.0° to 43.0° Bearing [Mag]: 311.0° to 47.0°				Arc Distance: Out to 72.0 NM Altitude: 4000.0 to 10000.0 ft		
2	SRQ FAA 070100-39 SRQ [IFPA]	N27° 24' 25.26", W082° 33' 49.18"	5.0 W	130	19	117.0	SRQ FAA 070100-39	
ESV:		Bearing [True]: 87.0° to 148.0° Bearing [Mag]: 92.0° to 153.0°				Arc Distance: Out to 77.0 NM Altitude: 4000.0 to 5000.0 ft		
3	PHK FAA 900991-60 PHK [IFPA]	N26° 46' 57.87", W080° 41' 29.16"	0.0 E	130	15.5	115.4	PHK FAA 900991-60	
ESV:		Bearing [True]: 130.0° to 200.0° Bearing [Mag]: 130.0° to 200.0°				Arc Distance: Out to 75.0 NM Altitude: 4000.0 to 10000.0 ft		
4	CYY FAA 815803-26 CYY [IFPA]	N26° 09' 12.34", W081° 46' 41.17"	3.0 W	25	8.7	108.6	CYY FAA 815803-26	
ESV:		Bearing [True]: 347.0° to 17.0° Bearing [Mag]: 350.0° to 20.0°				Arc Distance: Out to 65.0 NM Altitude: 3500.0 to 10000.0 ft		
5	ZBV FAA 051542-34 ZBV [IFPA]	N25° 42' 15.00", W079° 17' 40.00"	4.0 W	130	10	116.7	ZBV FAA 051542-34	
ESV:		Bearing [True]: 286.0° to 26.0° Bearing [Mag]: 290.0° to 30.0°				Arc Distance: Out to 60.0 NM Altitude: 4000.0 to 18000.0 ft		
6	PHK FAA 900991-30 PHK [IFPA]	N26° 46' 57.87", W080° 41' 29.16"	0.0 E	130	15.5	115.4	PHK FAA 900991-30	
ESV:		Bearing [True]: 235.0° to 300.0° Bearing [Mag]: 235.0° to 300.0°				Arc Distance: Out to 80.0 NM Altitude: 4000.0 to 15000.0 ft		

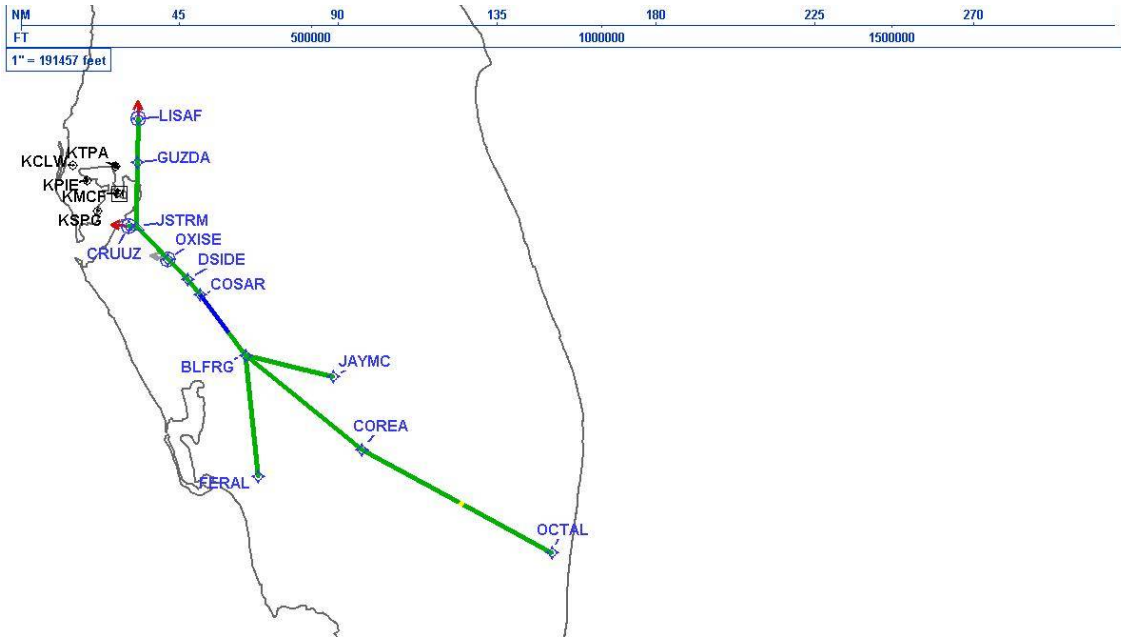
DME DME Assessment Results for BLFRG3 path BLFRG_OCTAL

DME Error



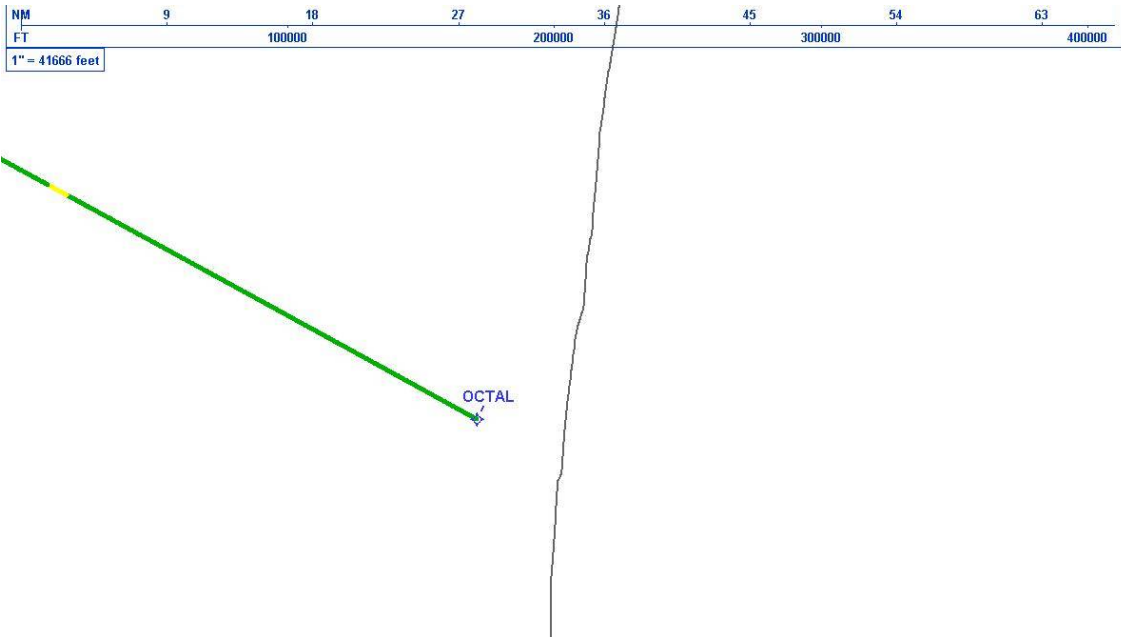
DME DME Assessment Results for BLFRG3 path BLFRG_OCTAL

Graphic Depiction 1



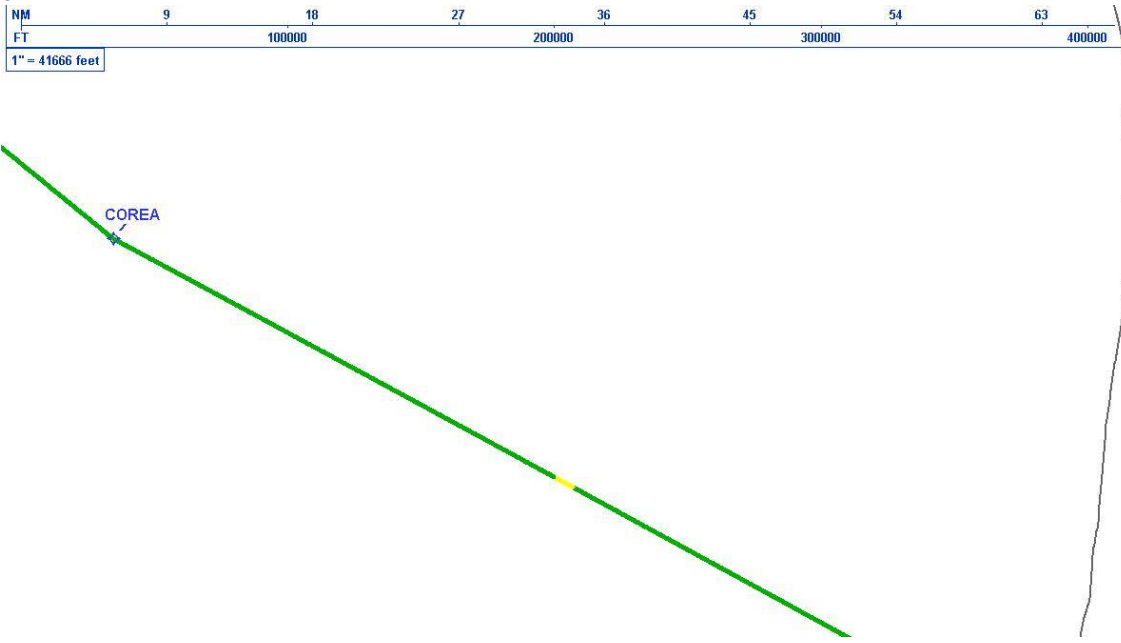
DME DME Assessment Results for BLFRG3 path BLFRG_OCTAL

Graphic Depiction 2



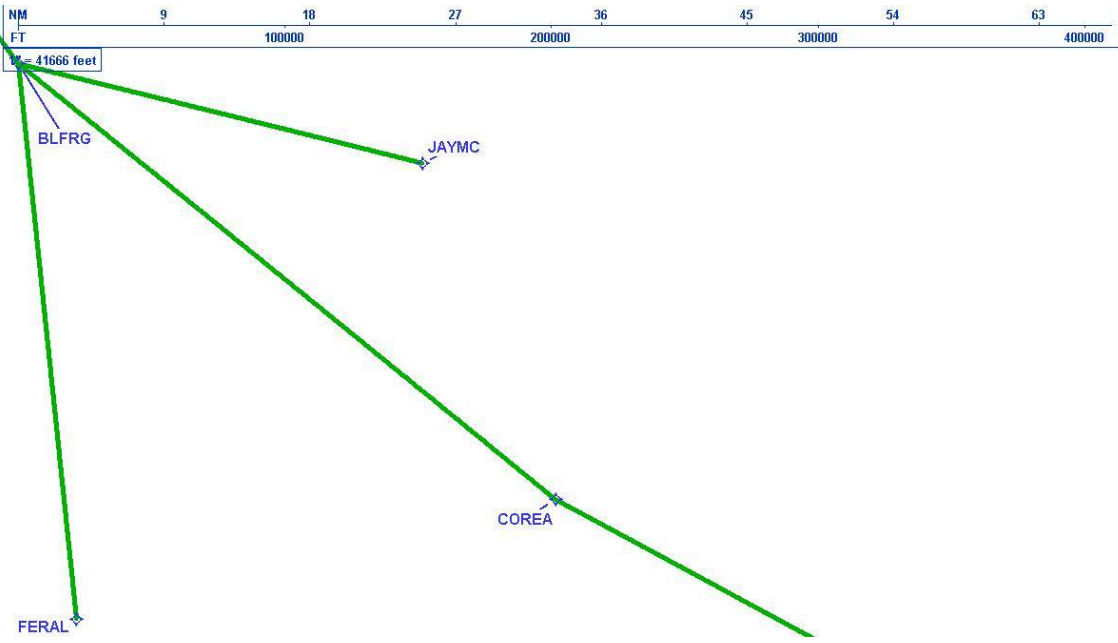
DME DME Assessment Results for BLFRG3 path BLFRG_OCTAL

Graphic Depiction 3



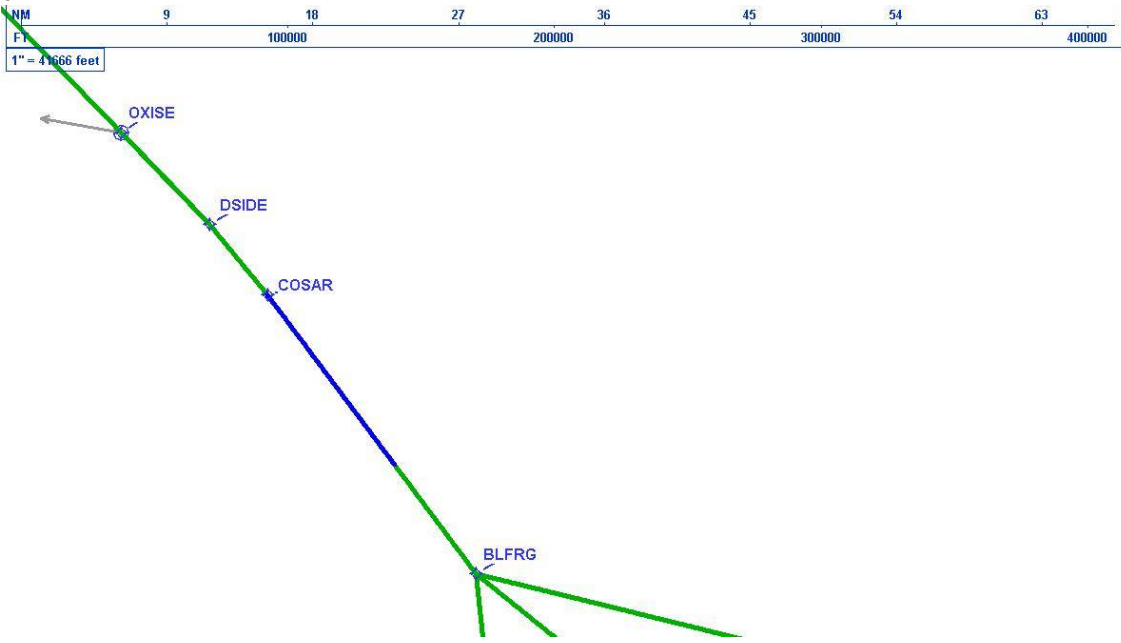
DME DME Assessment Results for BLFRG3 path BLFRG_OCTAL

Graphic Depiction 4



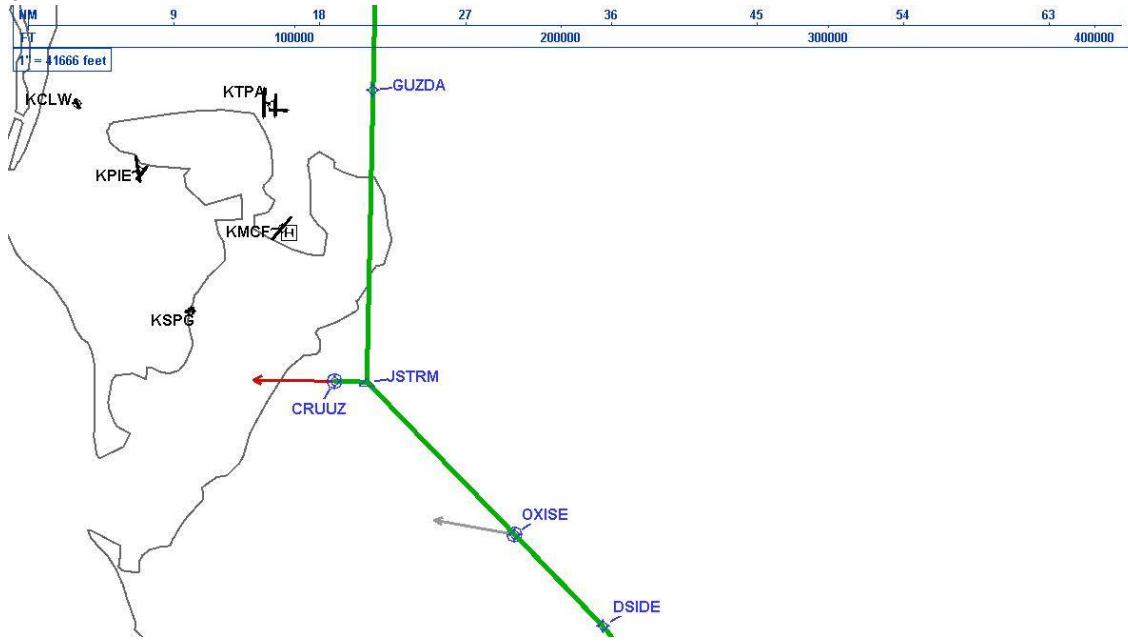
DME DME Assessment Results for BLFRG3 path BLFRG_OCTAL

Graphic Depiction 5



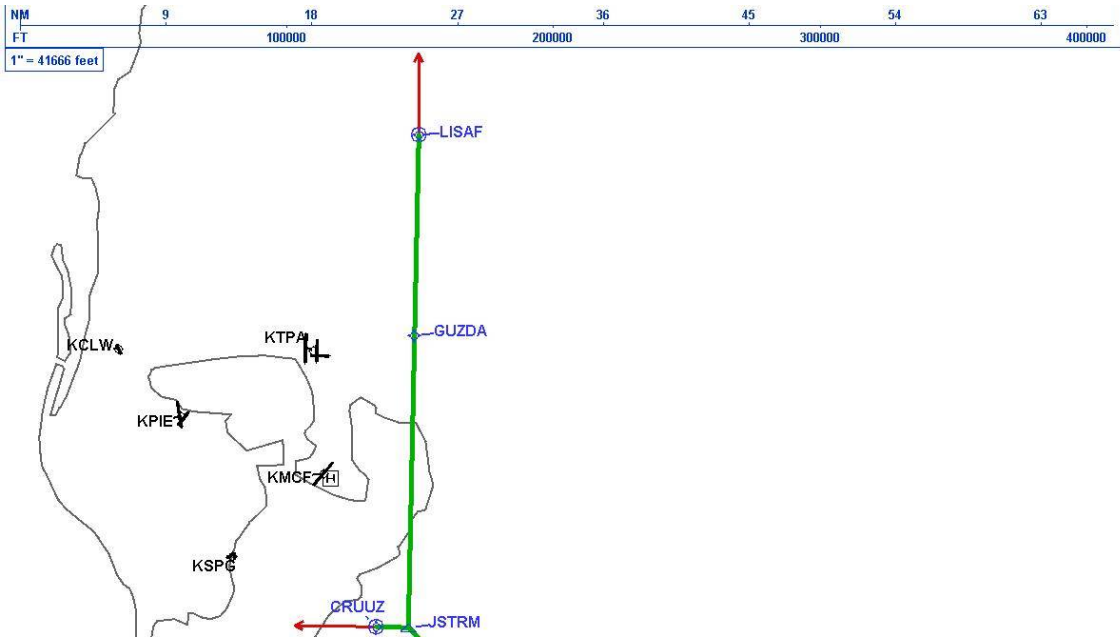
DME DME Assessment Results for BLFRG3 path BLFRG_OCTAL

Graphic Depiction 6



DME DME Assessment Results for BLFRG3 path BLFRG_OCTAL

Graphic Depiction 7



DME ESVs								
#	Name	Lat/Lon	MAGVAR	Range	Elevation [ft]	Frequency	Replaces	Status
1	CYY FAA 815803-26 CYY [IFPA]	N26° 09' 12.34", W081° 46' 41.17"	3.0 W	25	8.7	108.6	CYY FAA 815803-26	
	ESV:	Bearing [True]: 347.0° to 17.0° Bearing [Mag]: 350.0° to 20.0°				Arc Distance: Out to 65.0 NM Altitude: 3500.0 to 10000.0 ft		
2	DHP FAA 955265-40 DHP [IFPA]	N25° 47' 59.87", W080° 20' 56.53"	4.0 W	130	5.9	113.9	DHP FAA 955265-40	
	ESV:	Bearing [True]: 307.0° to 43.0° Bearing [Mag]: 311.0° to 47.0°				Arc Distance: Out to 72.0 NM Altitude: 4000.0 to 10000.0 ft		
3	PHK FAA 900991-30 PHK [IFPA]	N26° 46' 57.87", W080° 41' 29.16"	0.0 E	130	15.5	115.4	PHK FAA 900991-30	
	ESV:	Bearing [True]: 235.0° to 300.0° Bearing [Mag]: 235.0° to 300.0°				Arc Distance: Out to 80.0 NM Altitude: 4000.0 to 15000.0 ft		
4	PHK FAA 900991-60 PHK [IFPA]	N26° 46' 57.87", W080° 41' 29.16"	0.0 E	130	15.5	115.4	PHK FAA 900991-60	
	ESV:	Bearing [True]: 130.0° to 200.0° Bearing [Mag]: 130.0° to 200.0°				Arc Distance: Out to 75.0 NM Altitude: 4000.0 to 10000.0 ft		
5	SRQ FAA 070100-39 SRQ [IFPA]	N27° 24' 25.26", W082° 33' 49.18"	5.0 W	130	19	117.0	SRQ FAA 070100-39	
	ESV:	Bearing [True]: 87.0° to 148.0° Bearing [Mag]: 92.0° to 153.0°				Arc Distance: Out to 77.0 NM Altitude: 4000.0 to 5000.0 ft		
6	ZBV FAA 051542-34 ZBV [IFPA]	N25° 42' 15.00", W079° 17' 40.00"	4.0 W	130	10	116.7	ZBV FAA 051542-34	
	ESV:	Bearing [True]: 286.0° to 26.0° Bearing [Mag]: 290.0° to 30.0°				Arc Distance: Out to 60.0 NM Altitude: 4000.0 to 18000.0 ft		