

Flight Procedures Cover Page	Task Action: P-NOTAM	Task Type: IAP	Estimated Chart Date: 09/03/2026	APWS Task ID: 98AA2032AA95462D901360B3BA3AD765	APWS Project ID: 4D7F1C63876142B1A69E8243BF08D300
Procedure: RNAV (GPS) RWY 18 ORIG-A		Enroute: NO	Specialist: Johnson, Timothy		Agreement Number:
Airport ID: M37			Airport City: DREW		State: MS
Facility ID:	Facility Type:	Flight Inspection Remark Type:			

Procedure Comments:

Visibility Initiative (Garmin) - Update IAP visibility minimums IAW Order 8260.3, Chapter 3, Section 3-3. Visibility Minimums.

PROCESSED IAW TECHNICAL SUPPORT GROUP (AJF-17) MEMO DATED 07/07/2021, SUBJECT: GUIDANCE FOR PROCEDURAL CHANGES REQUIRING FLIGHT INSPECTION/VALIDATION.

CONTACT: CASEY HILL (405) 954-0624.



APP CRS	Rwy Ldg	3000
180°	TDZE	137
	Apt Elev	137

RNAV (GPS) RWY 18

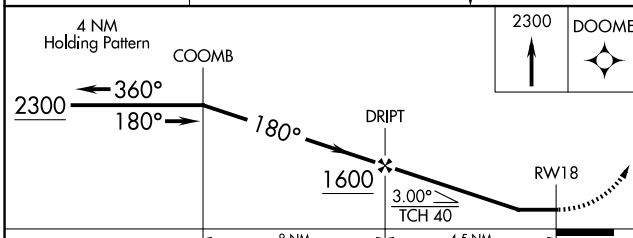
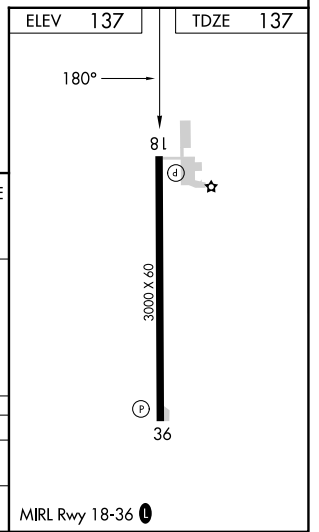
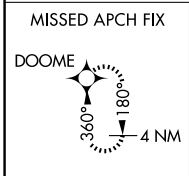
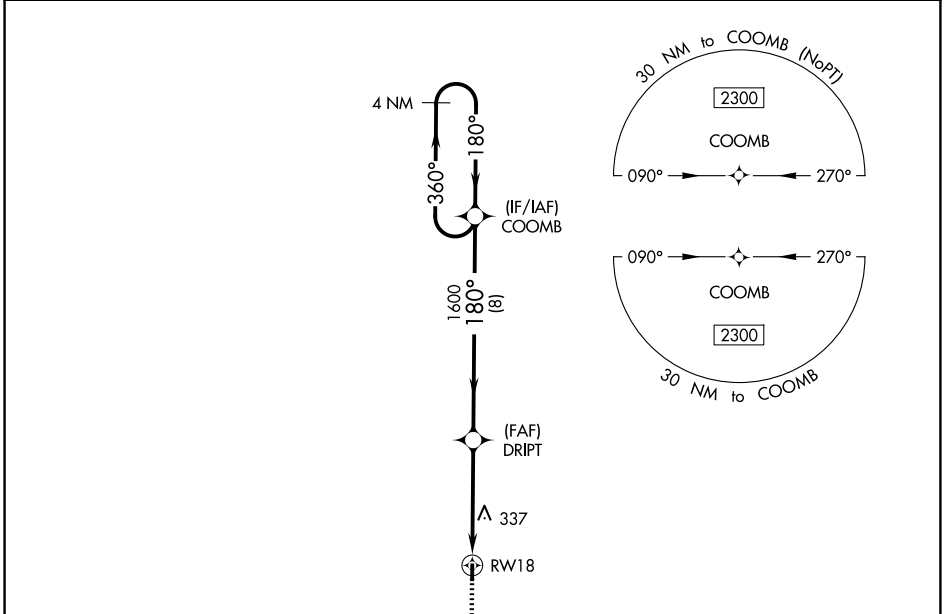
RULEVILLE-DREW (M37)

▽ DME/DME RNP-0.3 NA. Use Cleveland altimeter setting; when not received, use Greenwood altimeter setting and increase all MDA 40 feet and increase LNAV and Circling Cat C visibility ¼ mile. Procedure NA at night. Helicopter visibility reduction below 1 SM NA.

△ NA

MISSED APPROACH: Climb to 2300 direct DOOME and hold.

MEMPHIS CENTER 135.875 269.35	CTAF 122.9
---	----------------------



CATEGORY	A	B	C	D
LNAV MDA	680-1	543 (600-1)	680-1 3/8 543 (600-1 3/8)	NA
CIRCLING	680-1 543 (600-1)	720-1 583 (600-1)	780-1 3/4 643 (700-1 3/4)	NA

SC-4, 16 APR 2026 to 14 MAY 2026

SC-4, 16 APR 2026 to 14 MAY 2026