


WAAS CH 45526 W05A	APP CRS 052°	Rwy Idg TDZE Apt Elev	7001 228 236
--	------------------------	-----------------------------	---

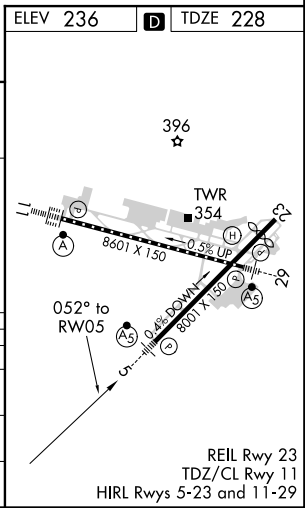
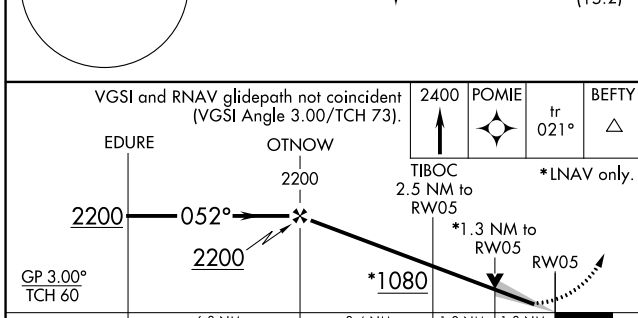
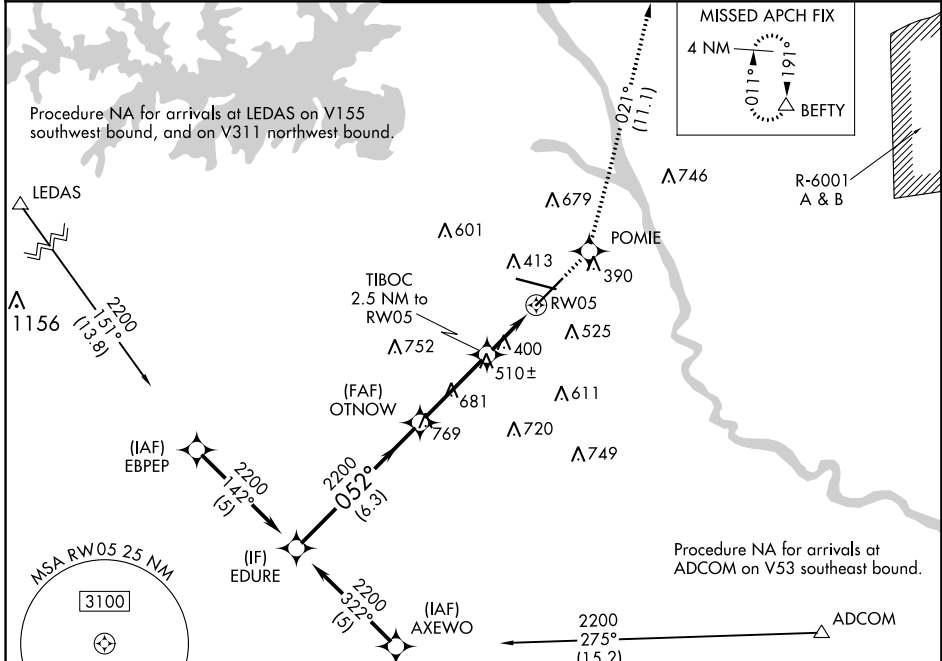
RNAV (GPS) RWY 5

COLUMBIA METROPOLITAN (CAE)

▼ For uncompensated Baro-VNAV systems, LNAV/VNAV NA below -15°C (5°F) or above 48°C (118°F). DME/DME RNP-0.3 NA. **RVR 1800 authorized with use of FD or AP or HUD to DA.

MALSR  MISSED APPROACH: Climb to 2400 direct POMIE and on track 021° to BEFTY and hold.

ATIS 120.15	COLUMBIA APP CON 133.4 285.6 (290°-109°) 124.15 338.2 (110°-289°)	COLUMBIA TOWER 119.5 257.8	GND CON 121.9 348.6	CLNC DEL 119.75
-----------------------	---	--------------------------------------	-------------------------------	---------------------------



CATEGORY	A	B	C	D
LPV DA **		428/24	200 (200-½)	
LNAV/VNAV DA		638/50	410 (500-1)	
LNAV MDA	700/24	472 (500-½)	700/40 472 (500-¾)	700/50 472 (500-1)
CIRCLING	740-1	504 (600-1)	840-1¾ 604 (700-1¾)	880-2 644 (700-2)

SE-2, 18 JUN 2020 to 16 JUL 2020

SE-2, 18 JUN 2020 to 16 JUL 2020

