

Flight Procedures Cover Page	Task Action: FLIGHT CHECK	Task Type: IAP	Estimated Chart Date: 02/20/2025	APWS Task ID: 9A333286391A4418B1EE4761E276A7F6	APWS Project ID: 185B7E0039644C4D8F5710E3E97CD27B
Procedure: RNAV (GPS) RWY 29 AMDT 3		Enroute: NO	Specialist:		Agreement Number:
Airport ID: KORH			Airport City: WORCESTER		State: MA
Facility ID:	Facility Type:	Flight Inspection Remark Type: New FC Slot			

Procedure Comments:
PREPARED IAW ATC REQUEST; NEW IAF KENZY ADDED SOUTH OF DEWEE.

CONTACT JOHN BORDY 405=954-0980

Digitally signed by

ERIC N SUSKI

Feb 26, 2025

QUALITY
9
CHECKED
BEGUE

QUALITY
35
CHECKED

FIPC BASIC FORM

PROCEDURE: RNAV (GPS) RWY 29 AMDT 3		AIRPORT NAME: WORCESTER RGNL		AIRPORT ID: KORH	SPECIAL CONTROL NO: YG-11-202-24
FAC ID: KORH29.03		CITY: WORCESTER		ST: MA	ORIG CHART DATE: 02/20/2025
DFL TYPE: PROC/S	THIRD PARTY: <input type="checkbox"/> YES	EST. TIME ON SITE: 0.4	REIMB. NUMBER:	PTS TASK ID: 9A333286391A4418B1EE4761E276A7F6	

PREFLIGHT NOTES

REVIEWER:			DATE:			
COMMENTS:			CHECK ONE:			
			<input type="checkbox"/> FLT CK REQ		<input type="checkbox"/> NFCR	<input type="checkbox"/> REJECT
					YES	NO
			CPV COMPLETE?		X	

PROCEDURE RESULTS

INSPECTION DATE: 02/25/2025	CREW #: VN361	N #: N68	INSTRUMENT PROCEDURE STATUS: <input checked="" type="checkbox"/> SAT <input type="checkbox"/> SAT W/CHANGES <input type="checkbox"/> UNSAT	ARINC CODING: <input checked="" type="checkbox"/> SAT <input type="checkbox"/> SAT/GOLD <input type="checkbox"/> UNSAT	
FLIGHT INSPECTOR SIGNATURE: gary bell @ 02/25/2025 17:07			PRINTED NAME: BELL, GARY WILSON		NOTAM INITIATED? <input type="checkbox"/> YES <input checked="" type="checkbox"/> NO

FLIGHT INSPECTOR REMARKS:

IN-FLIGHT OBSTACLE REPORT

OBSTRUCTION ID #:	COORDINATES OR LOCATION:	GNSS ALTITUDE (MSL):	BAROMETRIC ALTITUDE (MSL):	HEIGHT ABOVE GROUND LEVEL:

WAAS Ch 82299 W29A	APP CRS 289°	Rwy Idg TDZE Apt Elev	7001 990 1009
--	------------------------	-----------------------------	--

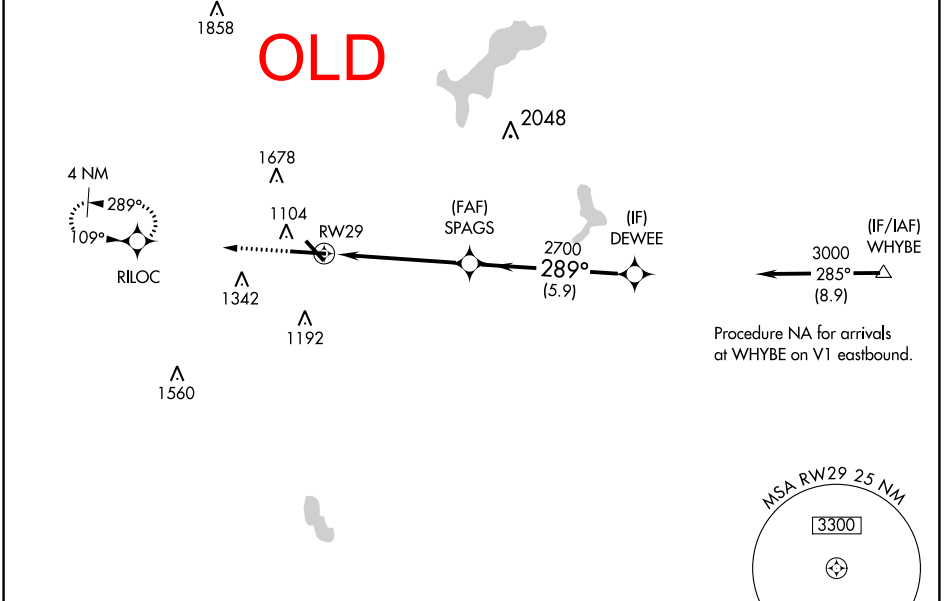
RNAV (GPS) RWY 29

WORCESTER RGNL (ORH)

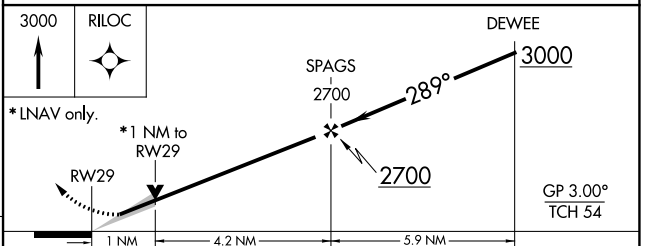
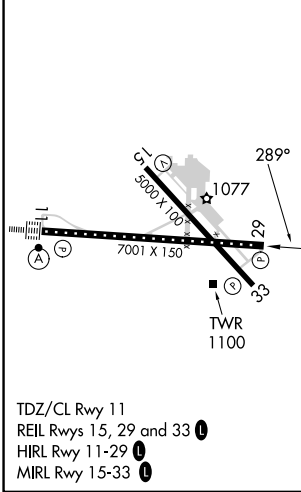
▽ For uncompensated Baro-VNAV systems, LNAV/VNAV NA below -20°C (-4°F) or above 54°C (130°F).
△ DME/DME RNP -0.3 NA.

MISSED APPROACH: Climb to 3000 direct RILOC and hold.

ATIS 126.55	BRADLEY APP CON 119.0 327.1	WORCESTER TOWER* 120.5 (CTAF) 263.0	GND CON 123.85	CLNC DEL 128.65	CLNC DEL 119.0 (When twr closed)	UNICOM 122.95
-----------------------	---------------------------------------	---	--------------------------	---------------------------	---	-------------------------



ELEV 1009	D	TDZE 990
-----------	----------	----------



CATEGORY	A	B	C	D
LPV DA		1190/50	200 (200-1)	
LNAV/VNAV DA		1261/50	271 (300-1)	
LNAV MDA		1360/55	370 (400-1)	
C CIRCLING	1560-1 551 (600-1)	1720-1 711 (800-1)	2000-3	991 (1000-3)

NE-1, 11 JUL 2024 to 08 AUG 2024

NE-1, 11 JUL 2024 to 08 AUG 2024

WAAS Ch 82299 W29A	APP CRS 289°	Rwy Idg TDZE Apt Elev	7001 990 1009
--	------------------------	-----------------------------	--

RNAV (GPS) RWY 29

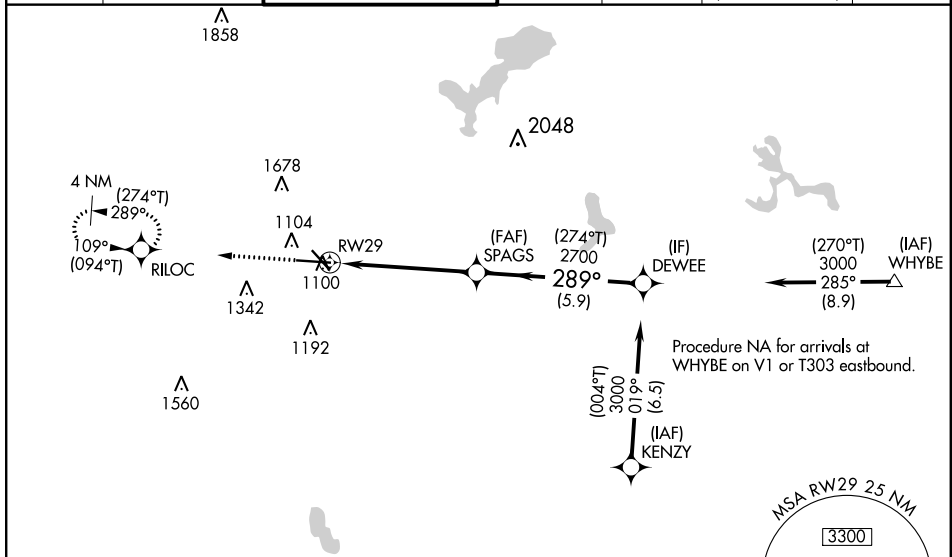
WORCESTER RGNL (ORH)

RNP APCH - GPS.

⚠ For uncompensated Baro-VNAV systems, LNAV/VNAV NA below -16°C or above 54°C.

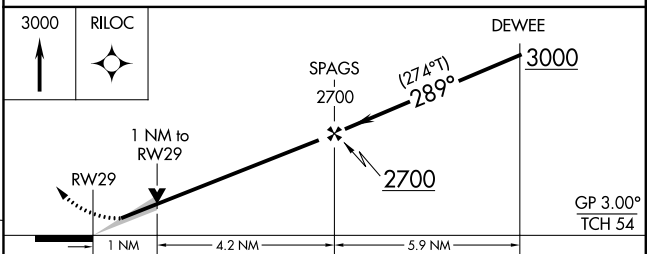
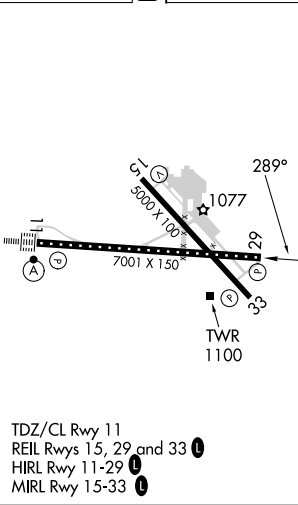
MISSED APPROACH: Climb to 3000 direct RILOC and hold, continue climb-in-hold to 3000.

ATIS 126.55	BRADLEY APP CON 119.0 327.1	WORCESTER TOWER ★ 120.5 (CTAF) 263.0	GND CON 123.85	CLNC DEL 128.65	CLNC DEL 119.0 (When twr closed)	UNICOM 122.95
-----------------------	---------------------------------------	--	--------------------------	---------------------------	---	-------------------------



PROTOTYPE-NOT FOR NAVIGATION

ELEV 1009	D	TDZE 990
-----------	----------	----------



CATEGORY	A	B	C	D
LPV DA		1190/50	200 (200-1)	
LNAV/VNAV DA		1261/50	271 (300-1)	
LNAV MDA		1360/55	370 (400-1)	
C CIRCLING	1560-1 551 (600-1)	1720-1 711 (800-1)	2000-3	991 (1000-3)

RILOC_CIH TOWER (1858)
25-000633

RILOC TERRAIN+AAO (1414)
TerrainPoint_T5P61240

Initial KENZY to DEWEE/Initial WHYBE to DEWEE/Intermediate DEWEE to SPAGS TERRAIN+AAO (906)
TP0

RILOC

KORH

SPAGS

DEWEE

WHYBE

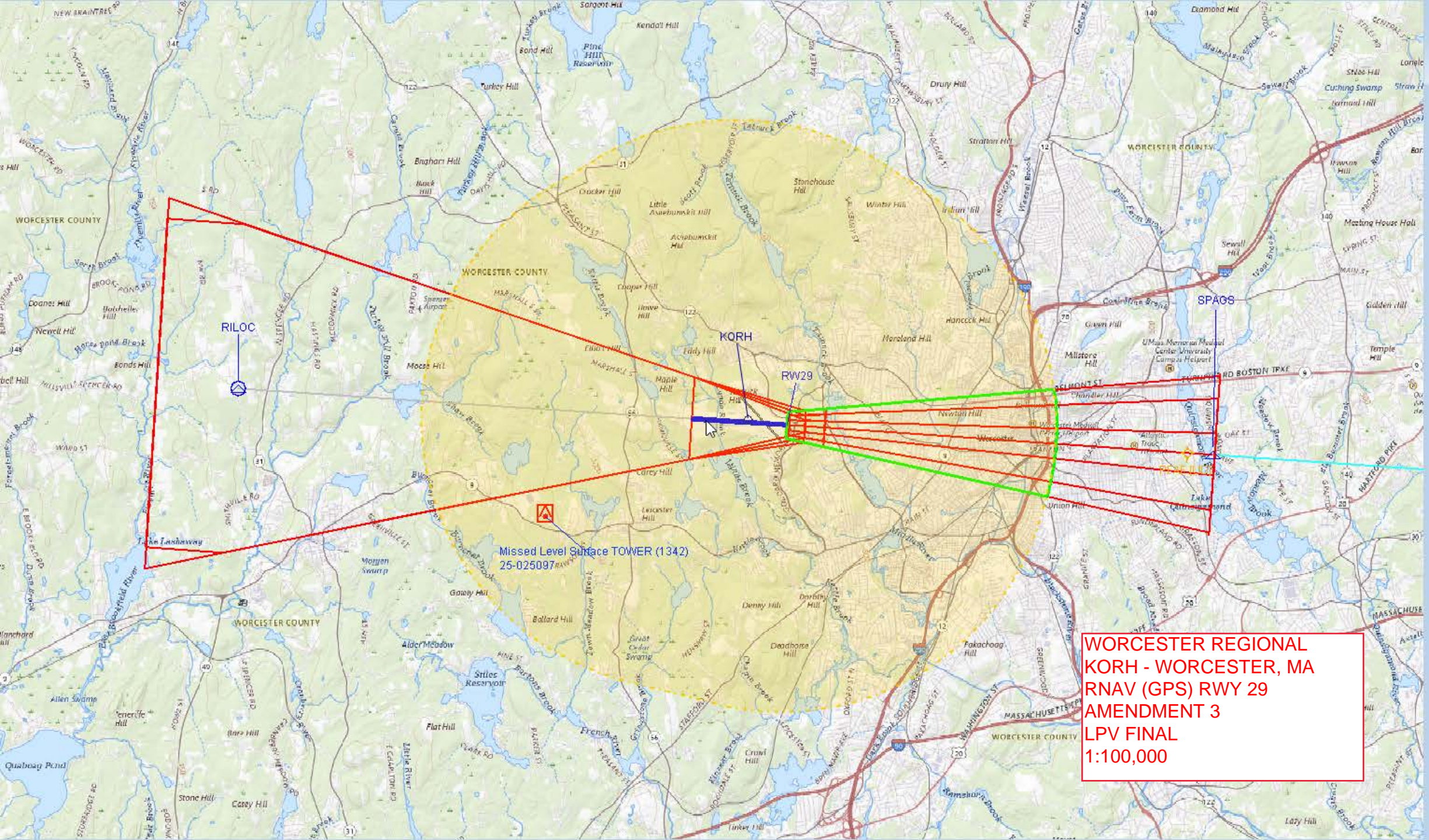
Missed Level Surface-TOWER (1342)
25-025097

CTC-YANKEE APP WITHIN 20 NM
ON 123.95 290.55 127.225 323.2

Intermediate DEWEE to SPAGS Airspace Terrain 705 (700)

Initial KENZY to DEWEE Airspace Terrain 705 (700)

WORCESTER REGIONAL
KORH - WORCESTER, MA
RNAV (GPS) RWY 29
AMENDMENT 3
1:500,000



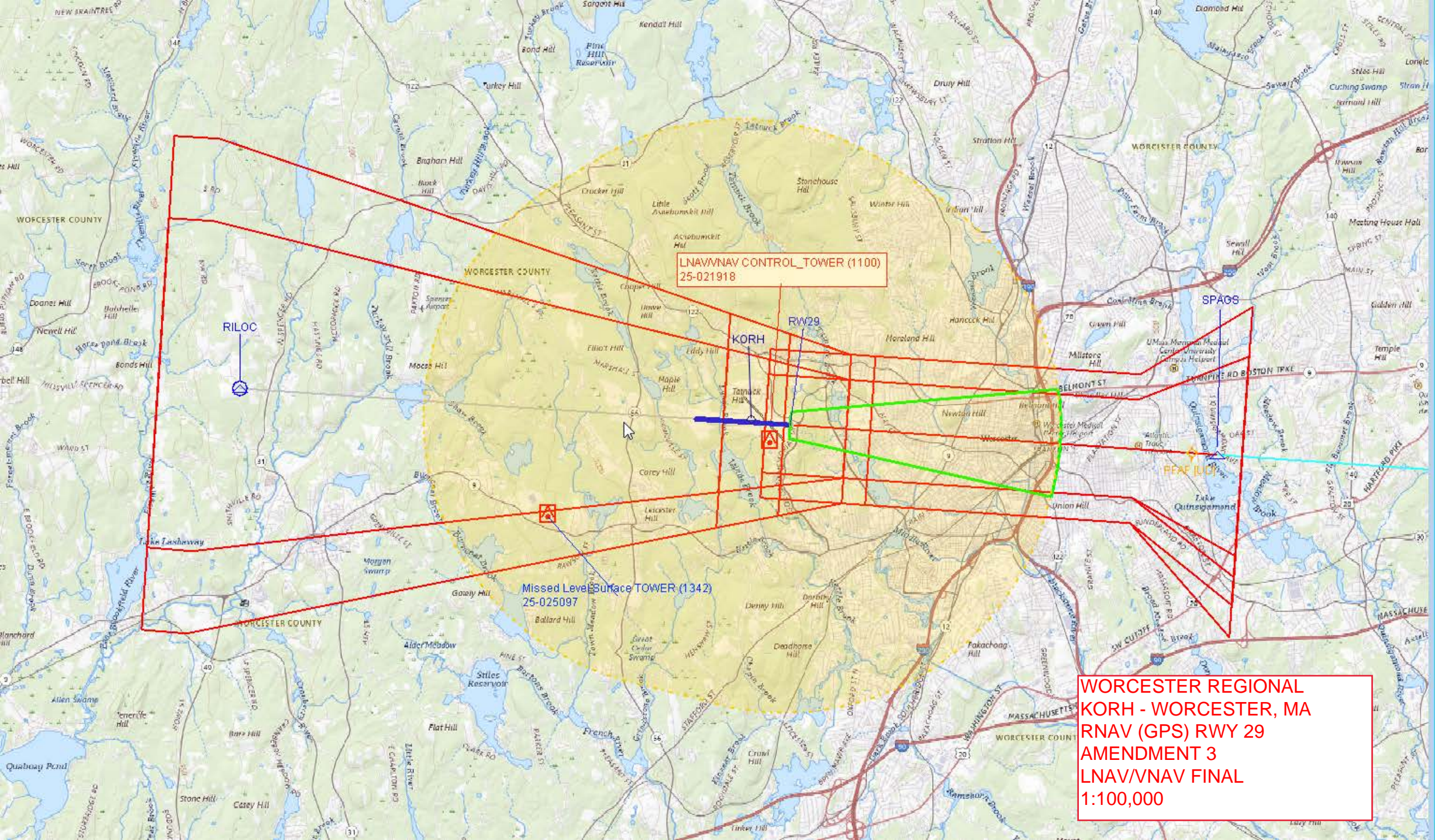
RILOC

KORH

RW29

Missed Level Surface TOWER (1342)
25-025097

**WORCESTER REGIONAL
KORH - WORCESTER, MA
RNAV (GPS) RWY 29
AMENDMENT 3
LPV FINAL
1:100,000**



LNAV/VNAV CONTROL_TOWER (1100)
25-021918

RILOC

KORH

RW29

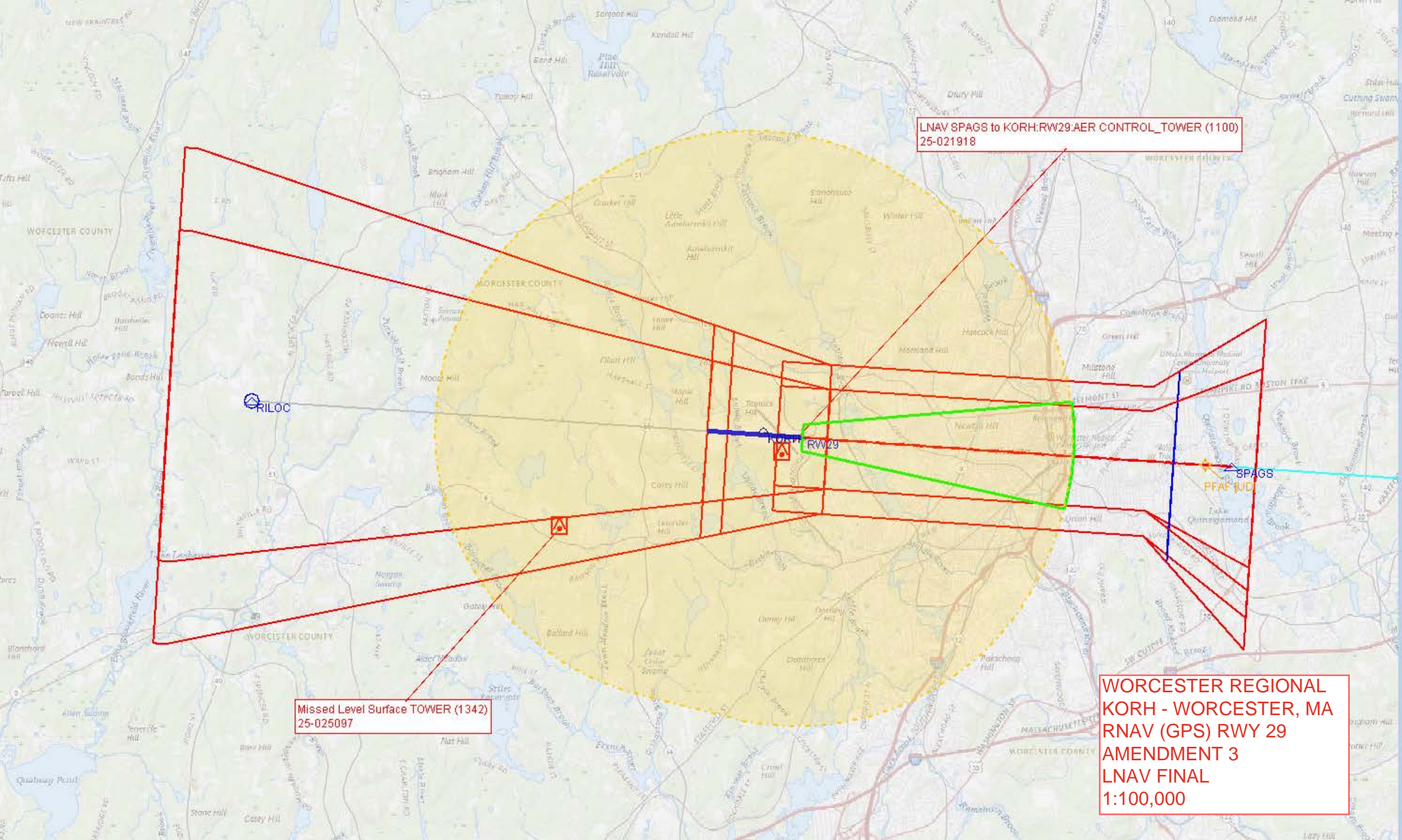
Missed Level Surface TOWER (1342)
25-025097

**WORCESTER REGIONAL
KORH - WORCESTER, MA
RNAV (GPS) RWY 29
AMENDMENT 3
LNAV/VNAV FINAL
1:100,000**

LNAV SPAGS to KORH:RW29:AER CONTROL_TOWER (1100)
25-021918

Missed Level Surface TOWER (1342)
25-025097

WORCESTER REGIONAL
KORH - WORCESTER, MA
RNAV (GPS) RWY 29
AMENDMENT 3
LNAV FINAL
1:100,000



Circling CAT C/D ANTENNA (1681)
25-030076

Circling CAT B TREE (1406)
25-030131

Circling CAT A TREE (1247)
25-049497

**WORCESTER REGIONAL
ORH - WORCESTER, MA
RNAV (GPS) RWY 29
AMENDMENT 3
CIRCLING
1:100,000**

