


WAAS CH 45607 W07A	APP CRS 067°	Rwy Ldg TDZE Apt Elev	8003 40 42
--	------------------------	-----------------------------	---------------------------------------

RNAV (GPS) RWY 7

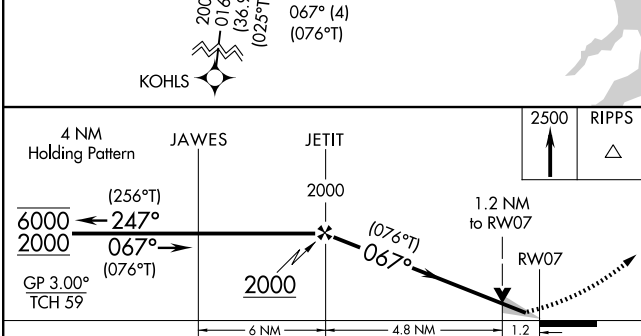
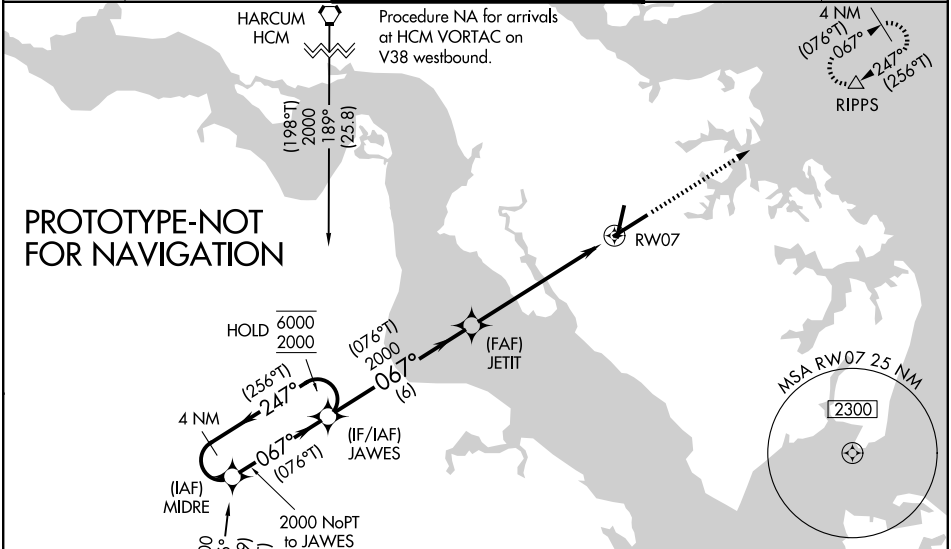
NEWPORT NEWS/WILLIAMSBURG INTL (PHF)

RNP APCH - GPS.

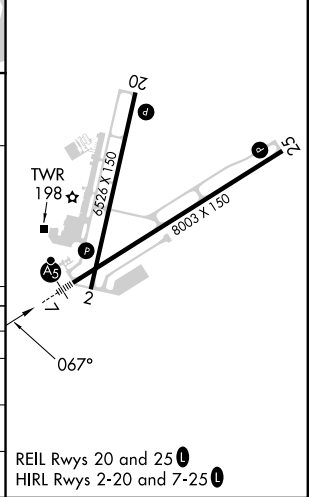
⚠ For uncompensated Baro-VNAV systems, LNAV/VNAV NA below -7°C or above 54°C. Baro-VNAV and VDP NA when using PHF altimeter setting. When local altimeter setting not received, use ORF altimeter setting and increase LPV DA to 317 feet; increase LNAV/VNAV DA to 548 feet and visibility to RVR 5500 all Cats; increase LNAV all MDAs 80 feet and LNAV visibility Cat C/D to RVR 5500; increase Circling visibility Cat C ½ SM and Cat D ½ SM. For inop ALS when using ORF altimeter setting, increase LPV visibility to RVR 4500 all Cats; increase LNAV/VNAV visibility to 1½ SM all Cats; increase LNAV visibility Cats C/D to 1½ SM.

MALSR

MISSED APPROACH:
 Climb to 2500 direct RIPP5 and hold, continue climb-in-hold to 2500.

ATIS 128.65	NORFOLK APP CON 125.7 335.625	NEWPORT NEWS TOWER ★ 118.7 (CTAF) 0 257.9	GND CON 121.9 348.6	UNICOM 122.95
-----------------------	---	---	-------------------------------	-------------------------



ELEV 42	D	TDZE 40
---------	----------	---------



CATEGORY	A	B	C	D
LPV DA		243/24	203 (300-½)	
LNAV/VNAV DA		474/40	434 (500-¾)	
LNAV MDA	480/24	440 (500-½)	480/40	440 (500-¾)
CIRCLING	520-1 478 (500-1)	540-1 498 (500-1)	760-2 718 (800-2)	780-2¼ 738 (800-2¼)

REIL Rwy 20 and 25
 HIRL Rwy 2-20 and 7-25