

Flight Procedures Cover Page	Task Action: Cancellation	Task Type: IAP	Estimated Chart Date: 11/27/2025	APWS Task ID: 9BC2FAD6A0454C9DBC401031027ECA52	APWS Project ID: 65BB16120BB3491BB35AE0FB9DE8C008
Procedure: VOR Z RWY 34 AMDT 6		Enroute: NO	Specialist: Martinez, Rafael		Agreement Number:
Airport ID: KPVD			Airport City: PROVIDENCE		State: RI
Facility ID: PVD	Facility Type: VOR_DME	Flight Inspection Remark Type:			

Procedure Comments:

CANCELLED DUE TO NPA UNDERUTILIZED PROCEDURES.

CONTACT: BEV L BORDY: 405-954-8293/ROBERT G HAMILTON 405-954-4608.



CANCEL

PROVIDENCE, RHODE ISLAND

AL-333 (FAA)

25051

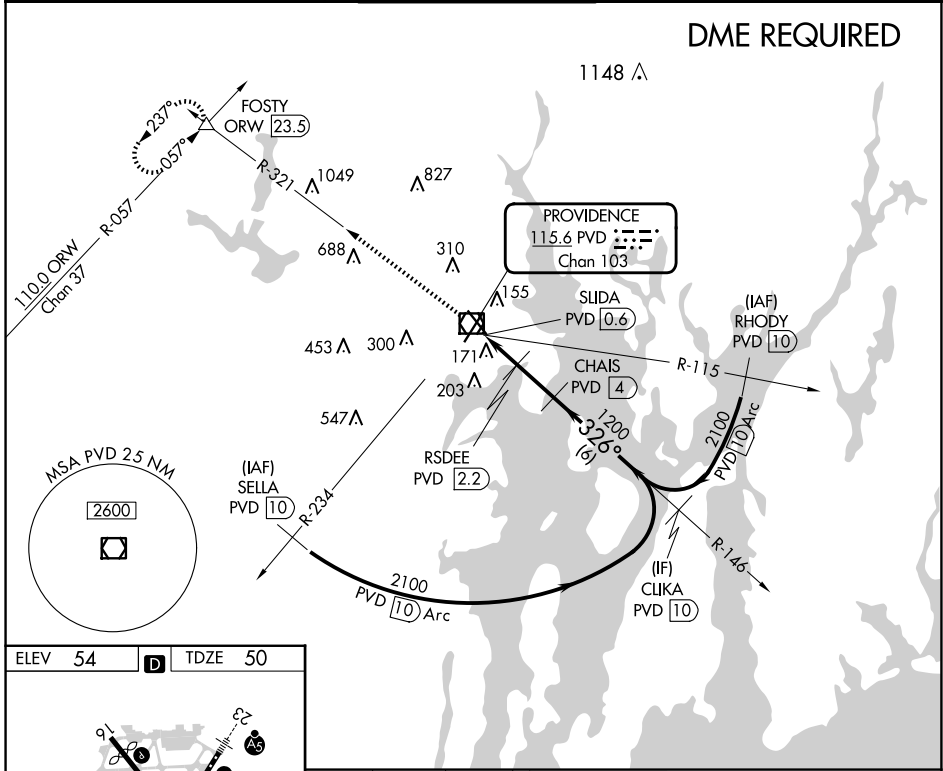
VOR/DME PVD 115.6 Chan 103	APP CRS 326°	Rwy Idg TDZE Apt Elev	6081 50 54
--	------------------------	-----------------------------	---------------------------------------

VOR Z RWY 34

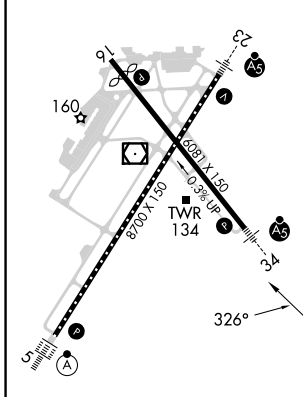
RHODE ISLAND TF GREEN INTL (PVD)

⚠ Rwy 34 helicopter visibility reduction below RVR 4000 NA. ⚠ DME required. For inop ALS, increase Cat A/B visibility to RVR 5500, and Cat C/D to RVR 6000.	MALSR 	MISSED APPROACH: Climb to 2500 on PVD VOR/DME R-321 to FOSTY INT/ORW 23.5 DME and hold.
--	-----------	---

D-ATIS 124.2	PROVIDENCE APP CON * 123.675 244.875	PROVIDENCE TOWER * 120.7 (CTAF) 0 257.8	GND CON 121.9 348.6	CLNC DEL 126.65 348.6
------------------------	--	--	-------------------------------	---------------------------------



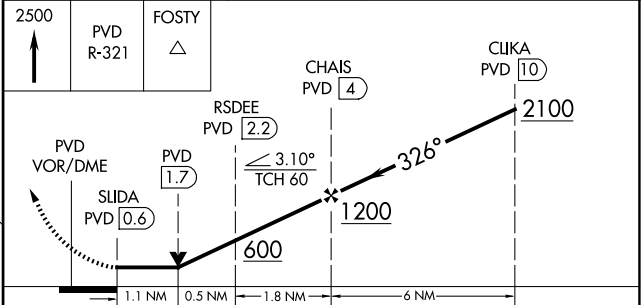
ELEV 54	D	TDZE 50
---------	----------	---------



TDZ/CL Rwy 5 **Ⓛ**

REIL Rwy 16 **Ⓛ**

HIRL Rwy 5-23 and 16-34 **Ⓛ**



CATEGORY	A	B	C	D
S-34		440/40	390 (400-3/4)	
C CIRCLING	560-1 506 (600-1)	640-1 586 (600-1)	640-1½ 586 (600-1½)	860-2½ 806 (900-2½)

PROVIDENCE, RHODE ISLAND
Amdt 6 07DEC17

41°43'N-71°26'W

RHODE ISLAND TF GREEN INTL (PVD)

VOR Z RWY 34

NE-1, 20 MAR 2025 to 17 APR 2025

NE-1, 20 MAR 2025 to 17 APR 2025