

WAAS CH 48923 W14A	APP CRS <b>143°</b>	Rwy Idg <b>5001</b> TDZE <b>23</b> APT Elev <b>23</b>
--------------------------	------------------------	---

# RNAV (GPS) RWY 14

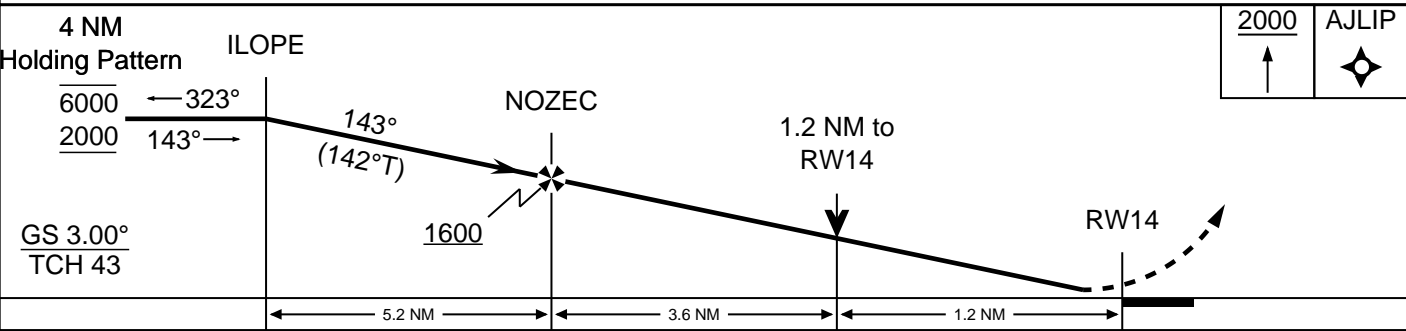
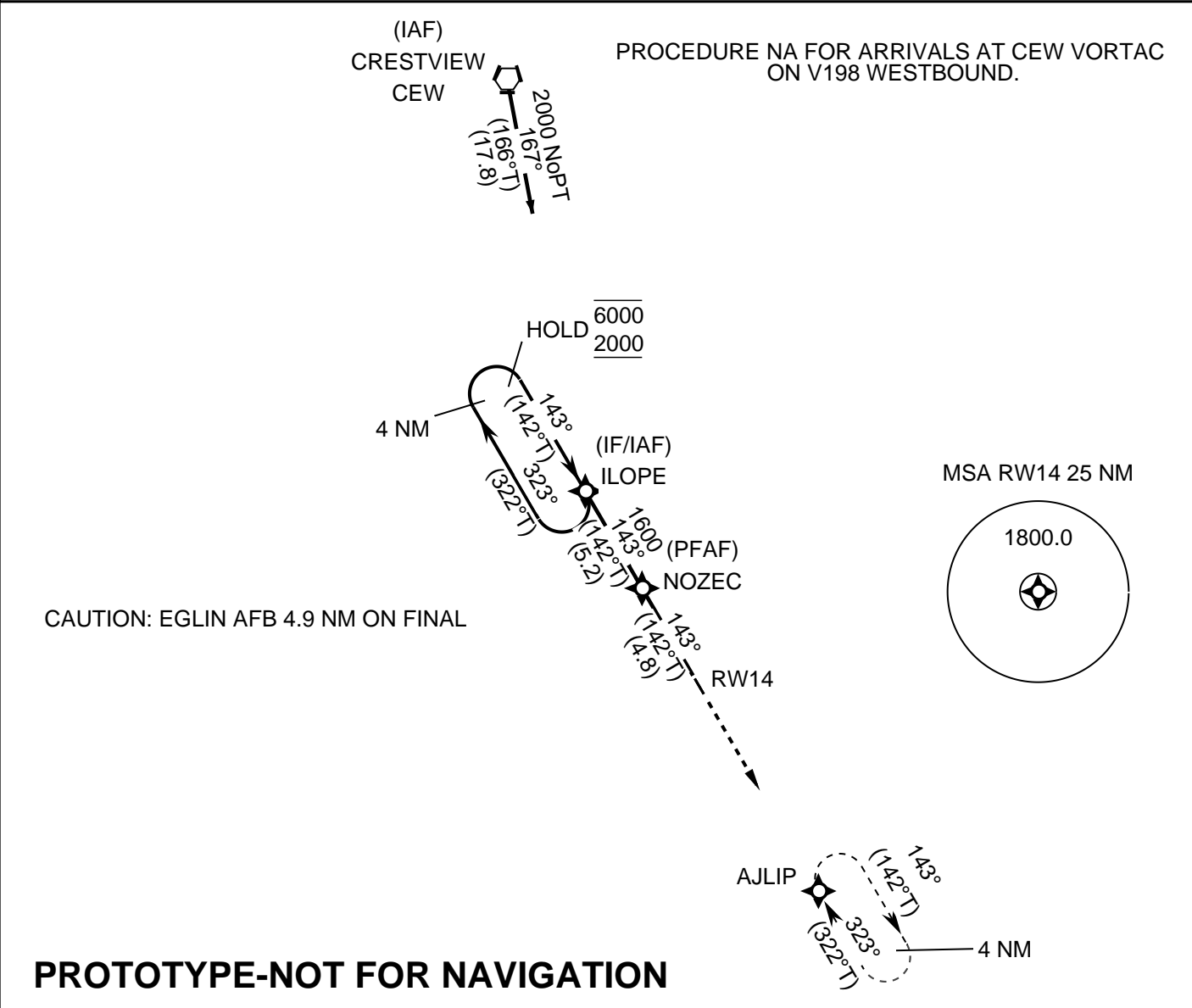
DESTIN EXEC (KDTS)

RNP APCH - GPS.

BARO-VNAV AND VDP NA WHEN USING CEW ALTIMETER SETTING. RWY 14 HELICOPTER VISIBILITY REDUCTION  
 BELOW 3/4 SM NOT AUTHORIZED. FOR UNCOMPENSATED BARO-VNAV SYSTEMS, LNAV/VNAV NA BELOW 0°C OR  
 ABOVE 54°C. WHEN LOCAL ALTIMETER SETTING NOT RECEIVED, USE CEW ALTIMETER SETTING: INCREASE LPV DA  
 TO 353 FEET; INCREASE LNAV/VNAV DA TO 447 FEET AND ALL VISIBILITIES 1/8 SM; INCREASE ALL MDAS 80 FEET  
 AND LNAV VISIBILITY CATS C AND D 1/8 SM, AND CIRCLING VISIBILITY CATS C AND D 1/4 SM.

MISSED APPROACH:  
CLIMB TO 2000 DIRECT  
AJLIP AND HOLD.

ATIS 133.925	EGLIN APP CON 132.1 360.6	DESTIN TOWER 118.45	GND CON 121.6	CLNC DEL 121.6	CLNC DEL 127.7 (When twr closed)
-----------------	------------------------------	------------------------	------------------	-------------------	--



CATEGORY	A	B	C	D
LPV	273-1 250			
LNAV/VNAV	367-1 1/8 344			
LNAV	460-1 437	460-1 1/4 437		
CIRCLING	580-1 557	680-1 3/4 657	680-2 657	