

(JNU7.SSR) FIG

## JUNEAU SEVEN DEPARTURE (OBSTACLE)

AL-1191 (FAA)

JUNEAU INTL (JNU)(PAJN)

JUNEAU, ALASKA

ANCHORAGE CENTER

133.9

ATIS

135.2

GND CON

121.9

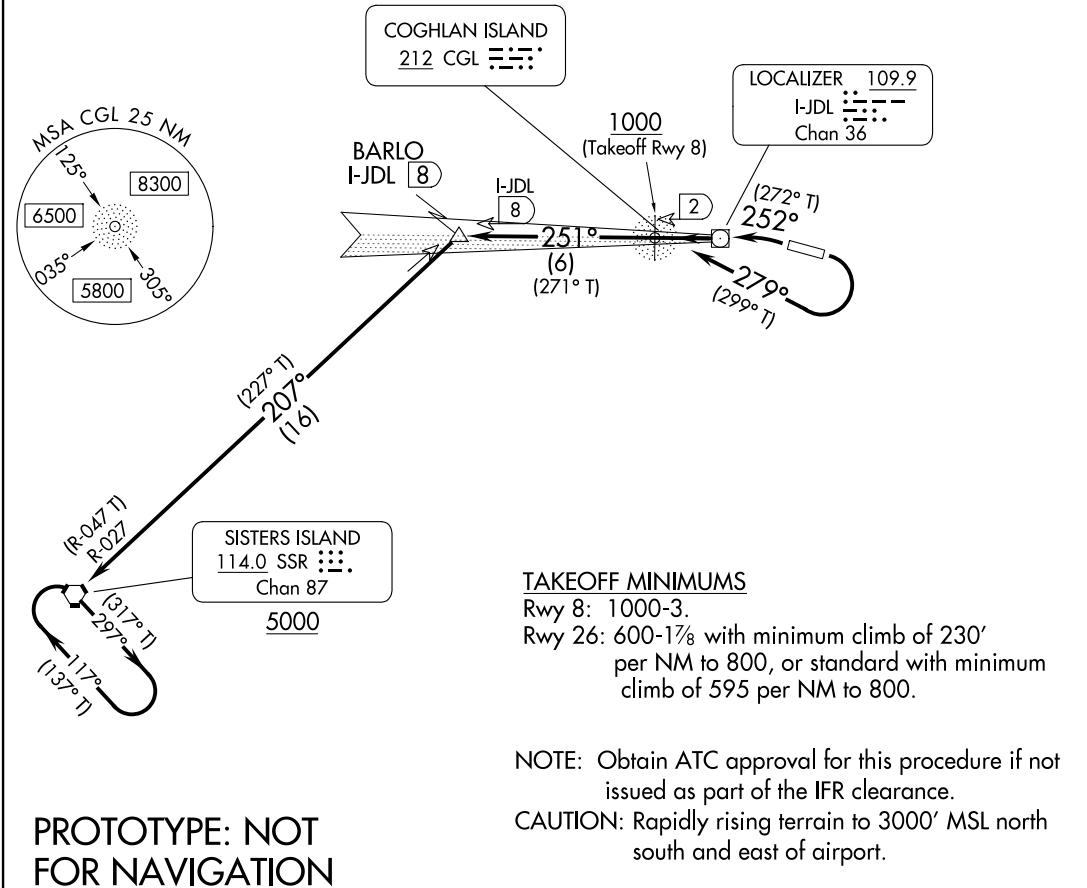
JUNEAU TOWER ★

118.7 (CTAF) 278.3

JUNEAU RADIO

122.2

ADF or DME required.



(CONTINUED ON FOLLOWING PAGE)

### DEPARTURE ROUTE DESCRIPTION

**TAKEOFF RUNWAY 8:** Climbing right turn as soon as practical. Climb in visual conditions direct CGL NDB or heading 279° to I-JDL West course/2 DME (visual conditions must be maintained from takeoff until established over CGL NDB or I-JDL West course/2 DME at or above 1000 MSL), thence. . . .

**TAKEOFF RUNWAY 26:** Climbing left turn heading 252° to CGL NDB or I-JDL West course/2 DME, thence. . . .

. . . .on I-JDL West course or 251° bearing from CGL NDB to BARLO I-JDL 8 DME, then left turn on SSR VORTAC R-027 to SSR VORTAC, cross SSR VORTAC at or above 5000, continue climb in holding pattern to cross SSR VORTAC at or above MEA from route of flight.

## JUNEAU SEVEN DEPARTURE (OBSTACLE)

(JNU7.SSR) FIG

JUNEAU, ALASKA

JUNEAU INTL (JNU)(PAJN)

AUTOMATED AL-1191 JUNEAU DEPARTURE

AK  
16 JUN 2025  
COMPILER: CG  
REVIEWER:  
DBL CHKR:  
EFF: FIG