

Flight Procedures Cover Page	Task Action: FLIGHT CHECK	Task Type: IAP	Estimated Chart Date: 05/14/2026	APWS Task ID: 9DB4367BB89E4E3B805A29DE4FBDBCD7	APWS Project ID: 7A6A1C2EDEF4A64946F889B4672C531
Procedure: RNAV (GPS) Y RWY 1L AMDT 4		Enroute: NO	Specialist: Kercher, Devon		Agreement Number:
Airport ID: KAPC			Airport City: NAPA		State: CA
Facility ID:	Facility Type:	Flight Inspection Remark Type: New FC Slot			

Procedure Comments:
ACTIVE DATA USED FOR I-APC AND KAPC.
KAPC_RNAV_(GPS)_Y_RWY_01L_AMDT_4_1 - MISSED APPROACH PENETRATION KMZ FILE
CONTACT ROBERT HAMILTON (AJV-A431) 405 954 4608




WAAS CH 56613 W01A	APP CRS 006°	Rwy Ldg TDZE 17 Apt Elev 36
--	------------------------	--

RNAV (GPS) Y RWY 1L

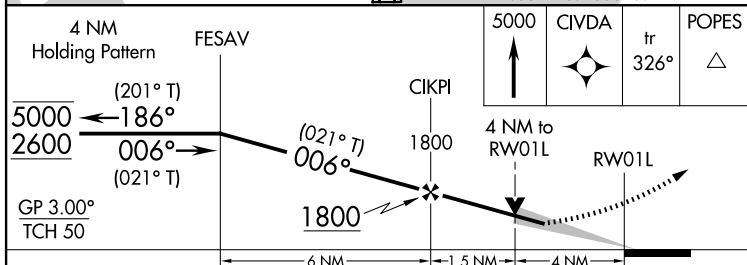
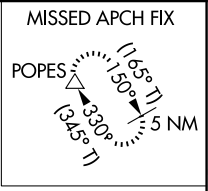
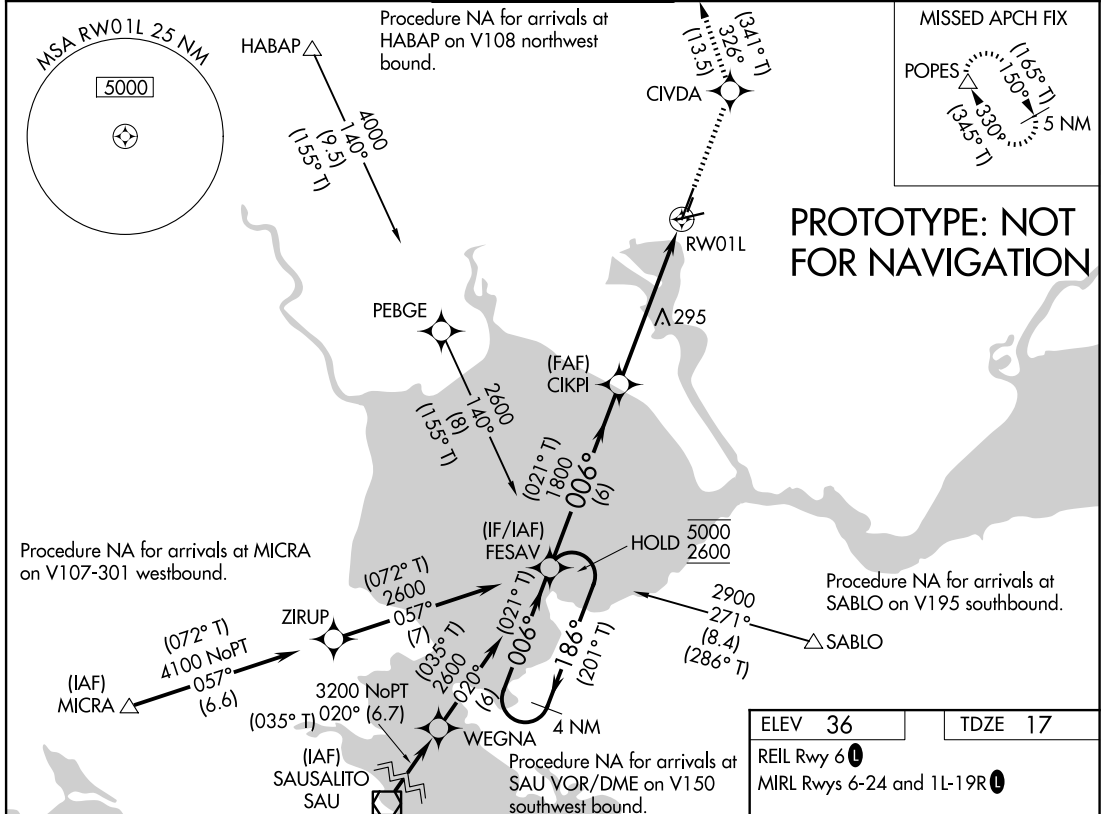
NAPA COUNTY (APC)



RNP APCH - GPS.

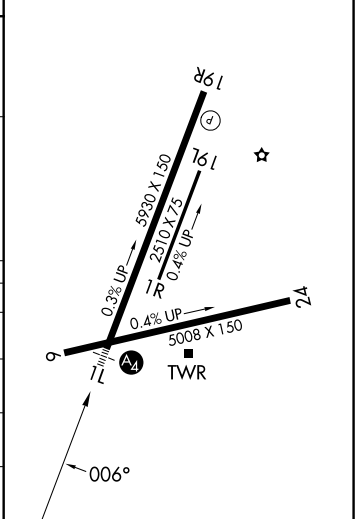
⚠ For uncompensated Baro-VNAV systems, LNAV/VNAV NA below -2°C or above 54°C. Inop table does not apply to LPV, LNAV/VNAV all Cats, and LNAV Cats A/C/D. Circling Cats A/B/C NA northeast or Rwy 19R and 24. Circling Cat D NA east of Rwy 19L and 1R.

MALS  MISSED APPROACH: Climb to 5000 direct CIVDA and on track 326° to POPES and hold, continue climb-in-hold to 5000.

ATIS 124.05	OAKLAND CENTER 127.8 353.5	NAPA TOWER * 118.70 (CTAF) 257.8	GND CON 121.7	UNICOM 122.95
-----------------------	--------------------------------------	---	-------------------------	-------------------------



ELEV 36	TDZE 17
REIL Rwy 6 	
MIRL Rwy 6-24 and 1L-19R 	



CATEGORY	A	B	C	D
LPV DA		1252-5	1235 (1300-5)	
LNAV/VNAV DA		1051-4	1034 (1100-4)	
LNAV MDA	1340-1¼	1323 (1400-1¼)	1340-3	1323 (1400-3)
CIRCLING	1340-1¼ 1304 (1400-1¼)	1340-1½ 1304 (1400-1½)	1340-3	1304 (1400-3)

AUTOMATED AL-281 RNAV (GPS) Y RWY 1L

SW-2
20 JAN 2026
COMPILER: CG
REVIEWER:
DBL CHKR:
EFF: FIG

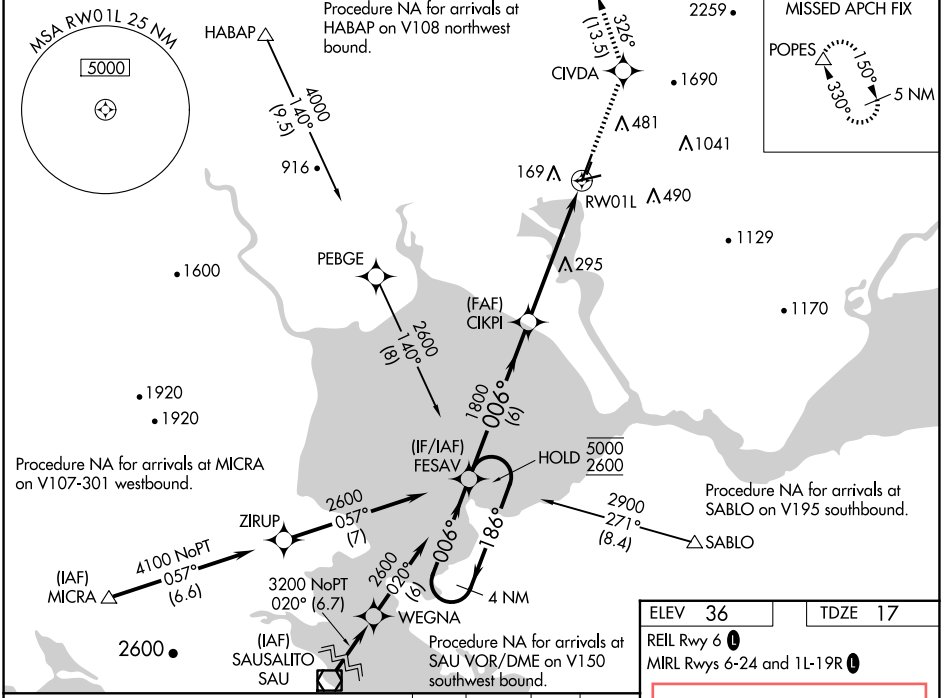
WAAS CH 56613 W01A	APP CRS 006°	Rwy Idg 5930 TDZE 17 Apt Elev 36
--	------------------------	---

RNAV (GPS) Y RWY 1L

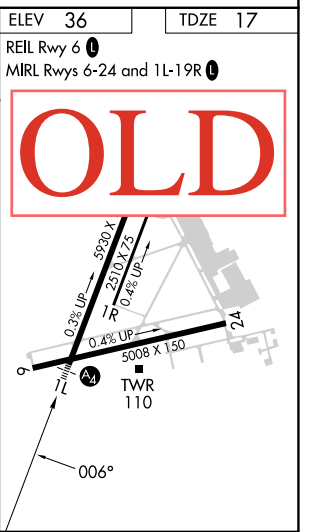
NAPA COUNTY (APC)

RNP APCH.	MALS 	MISSED APPROACH: Climb to 5000 direct CIVDA and on track 326° to POPES and hold, continue climb-in-hold to 5000.
<p>▽ For uncompensated Baro-VNAV systems, LNAV/VNAV NA below -4°C or above 54°C. Circling Cats A/B/C NA northeast or Rwy's 19R and 24. Circling Cat D NA east of Rwy 19L-1R. Inop table does not apply to LPV, LNAV/VNAV all Cats, and LNAV Cats C/D. Circling Rwy 6 NA at night.</p>		

ATIS 124.05	OAKLAND CENTER 127.8 353.5	NAPA TOWER ★ 118.7 (CTAF) 0 257.8	GND CON 121.7	CLNC DEL 127.85	UNICOM 122.95
-----------------------	--------------------------------------	---	-------------------------	---------------------------	-------------------------



4 NM Holding Pattern		FESAV	5000	CIVDA	tr	POPES
5000 ← 186°		1800	↑	Δ	326°	Δ
2600 → 006°		1800	*3.7 NM to RWY01L		*RNAV only	
GP 3.00° TCH 50		1800	RWY01L		RWY01L	
		6 NM	1.8 NM	3.7 NM		
CATEGORY	A	B	C	D		
LPV DA		1252-5	1235 (1300-5)			
LNAV/VNAV DA		1051-4	1034 (1100-4)			
LNAV MDA	1260-1 1243 (1300-1)	1260-1¼ 1243 (1300-1¼)	1260-3 1243 (1300-3)			
CIRCLING	1260-1¼ 1224 (1300-1¼)	1260-1½ 1224 (1300-1½)	1280-3 1244 (1300-3)	1300-3 1264 (1300-3)		



SW-2, 02 OCT 2025 to 30 OCT 2025

SW-2, 02 OCT 2025 to 30 OCT 2025