

WAAS CH 65645 W18A	APP CRS 178°	Rwy Ldg TDZE 1131 Apt Elev 1131
--	------------------------	---

RNAV (GPS) RWY 18

LAMONI MUNI (LWD)

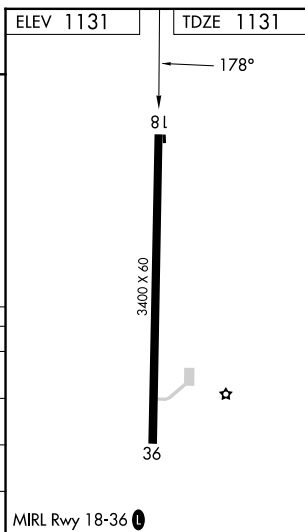
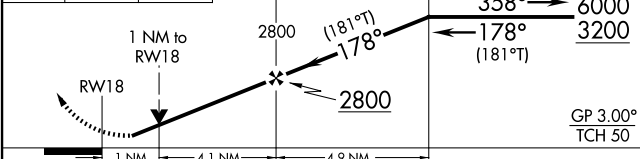
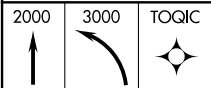
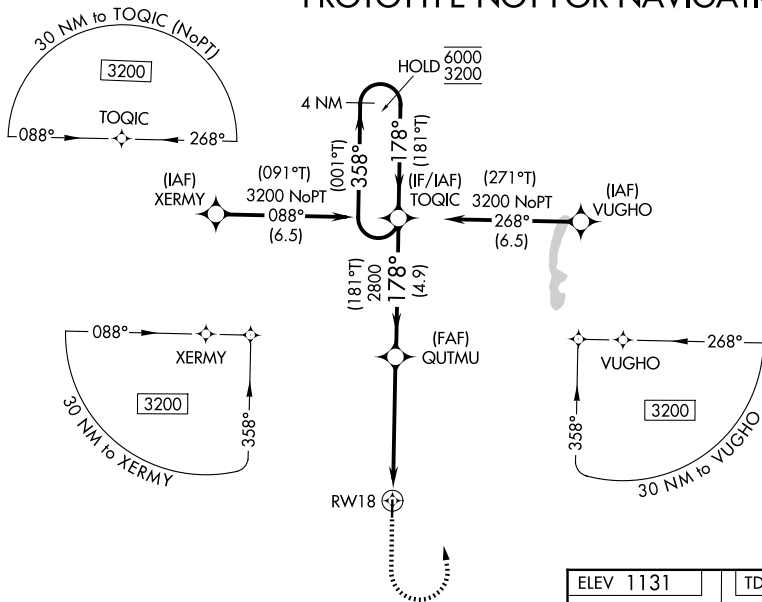
RNP APCH - GPS.

⚠ Circling NA west of Rwy 18-36. Rwy 18 helicopter visibility reduction below 3/4 SM NA. For uncompensated Baro-VNAV systems, LNAV/VNAV NA below -21°C or above 54°C.

MISSED APPROACH: Climb to 2000 then climbing left turn to 3000 direct TOQIC and hold.

ASOS 120.0	MINNEAPOLIS CENTER 125.65 306.95	CTAF 122.9
----------------------	--	----------------------

PROTOTYPE-NOT FOR NAVIGATION



CATEGORY	A	B	C	D
LPV DA		1381-1	250 (300-1)	
LNAV/VNAV DA		1381-1	250 (300-1)	
LNAV MDA		1500-1	369 (400-1)	
CIRCLING	1520-1 389 (400-1)	1720-1 589 (600-1)	1720-1½ 589 (600-1½)	1720-2 589 (600-2)

MIRL Rwy 18-36 **⓪**