

Flight Procedures Cover Page	Task Action: P-NOTAM	Task Type: IAP	Estimated Chart Date: 05/16/2024	APWS Task ID: 9EA40DCA55694F489484C06DAC61FBDA	APWS Project ID: FA0CCBF66C6C43D4B9584D5683519195
Procedure: RNAV (GPS) RWY 21 AMDT 0D		Enroute: NO	Specialist: Feronti, Tia		Agreement Number:
Airport ID: KFVX			Airport City: FARMVILLE		State: VA
Facility ID:	Facility Type:	Flight Inspection Remark Type:			

Procedure Comments:

PROCESSED IAW TECHNICAL SUPPORT GROUP (AJF-17) MEMO DATED 07/07/2021 GUIDANCE FOR PROCEDURAL CHANGES REQUIRING FLIGHT INSPECTION/VALIDATION.

THE VGSI TCH IS 44.9 AND THE RNAV TCH IS 52. ADD VGSI NON-COINCIDENT NOTE.

CONTACT DAVID DANNER, AJV-A421, 405-954-5077.



Digitally signed by
PABLO ORTIZ-JR
Apr 08, 2024

OLD

FARMVILLE, VIRGINIA

AL-5805 (FAA)

23222

WAAS CH 70517 W21A	APP CRS 209°	Rwy Idg 4400 TDZE 416 Apt Elev 416
--	------------------------	---

RNAV (GPS) RWY 21

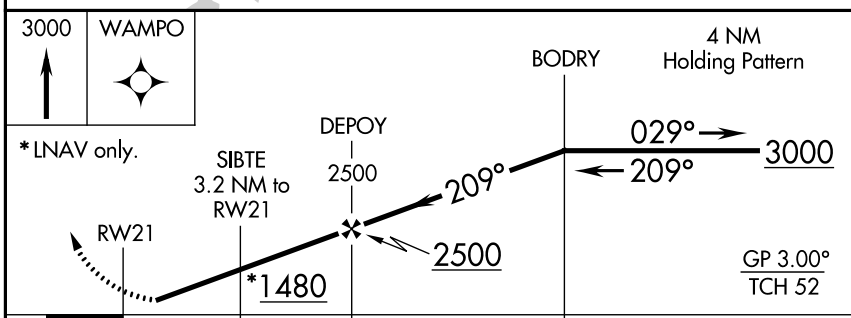
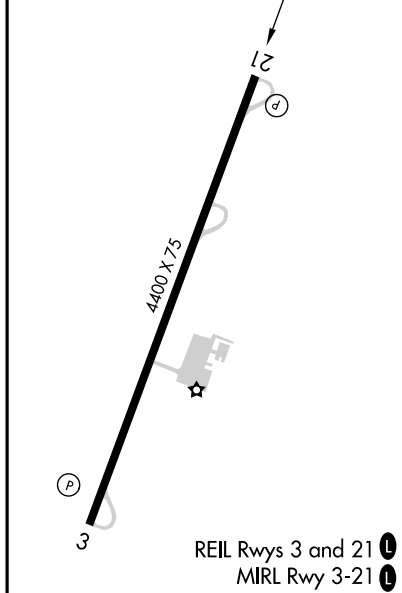
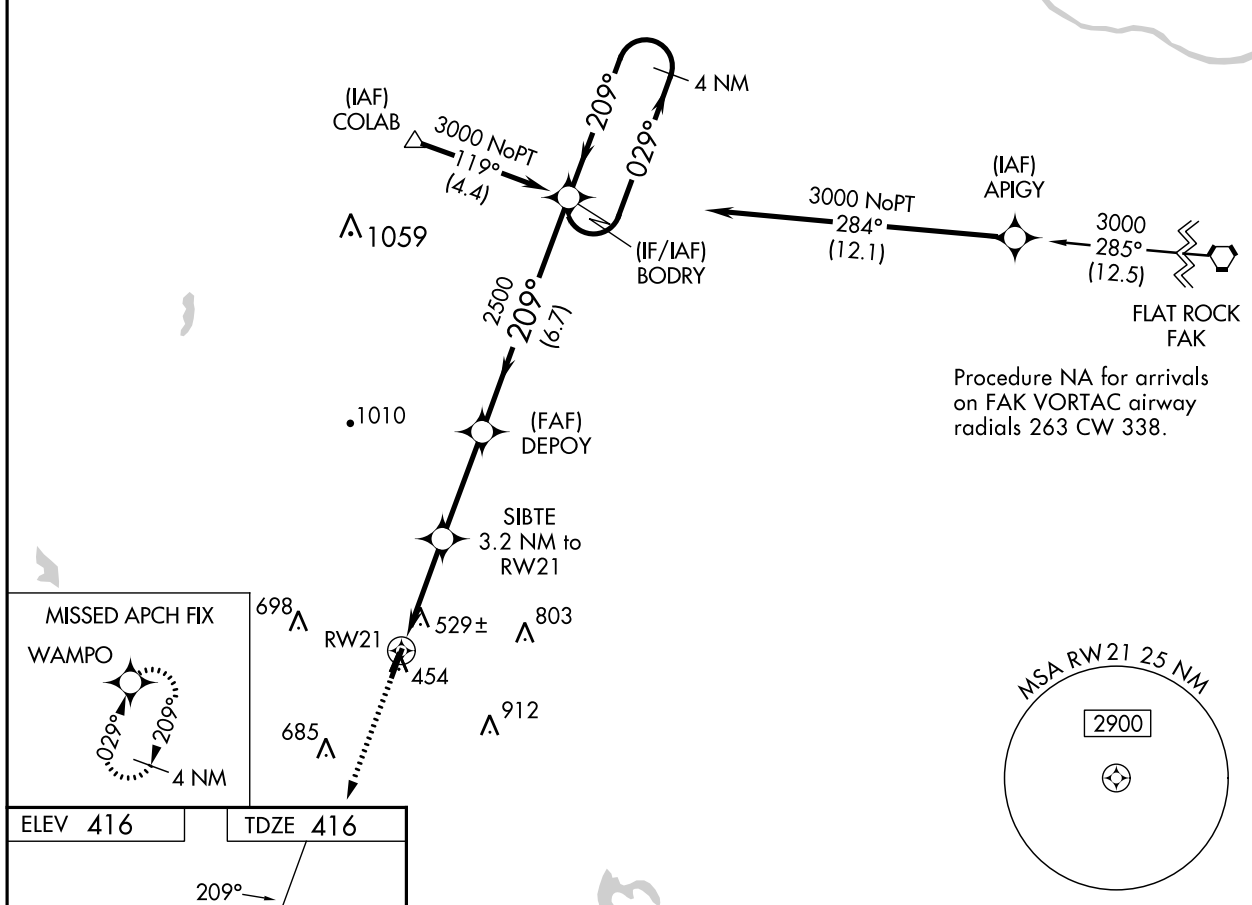
FARMVILLE RGNL (FVX)

RNP APCH-GPS.

▼ Baro-VNAV NA when using Lynchburg Rgnl/Preston Glenn Fld altimeter setting. For uncompensated Baro-VNAV systems, LNAV/VNAV NA below -15°C or above 54°C. When local altimeter setting not received, use Lynchburg Rgnl/Preston Glenn Fld altimeter setting and increase LPV DA to 854 feet and all visibilities ¼ SM, increase LNAV/VNAV DA to 1024 feet and all visibilities ⅜ SM, increase all MDAs 160 feet and LNAV visibility Cat C ⅜ SM. Circling Rwy 3 NA at night. Rwy 21 helicopter visibility reduction below 1 SM NA.

▲ MISSED APPROACH: Climb to 3000 direct WAMPO and hold.

AWOS-3 132.725	ROANOKE APP CON 135.0 254.325	UNICOM 122.8 (CTAF)
--------------------------	---	-------------------------------



CATEGORY	A	B	C	D
LPV DA	696-1	280 (300-1)		NA
LNAV/VNAV DA	866-1⅜	450 (500-1⅜)		NA
LNAV MDA	860-1	444 (500-1)	860-1⅜ 444 (500-1⅜)	NA
CIRCLING	900-1	484 (500-1)	1000-1½ 584 (600-1½)	NA

NE-3, 02 NOV 2023 to 30 NOV 2023

NE-3, 02 NOV 2023 to 30 NOV 2023

FARMVILLE, VIRGINIA
Orig-C 10AUG23

37°21'N-78°26'W

RNAV (GPS) RWY 21

OLD