


Flight Procedures Cover Page	Task Action: FLIGHT CHECK	Task Type: IAP	Estimated Chart Date: 09/10/2020	APWS Task ID: A449B2CD7D3C407E94A4AF378E46DCF8	APWS Project ID: 6C97D5718CE3478789918777672B17B3
Procedure: RNAV (GPS) RWY 20 AMDT 2		Enroute: NO	Specialist: Baggett, Jay		Agreement Number:
Airport ID: KOFK	Airport Name: NORFOLK RGNL/KARL STEFAN MEMORIAL FLD		Airport City: NORFOLK		State: NE
Facility ID:	Facility Type:	Flight Inspection Remark Type: Hold FC Slot			
<p>Procedure Comments: PENDING DATA USED FOR AIRPORT AND RUNWAY.</p> <p>CANCELS T-NOTAM FDC 9/2921.</p> <p>NEW CIRCLING APPLIED.</p> <p>CONTACT ANDREW HENNING: 405-954-9954</p> <p>07/09/20: THIS IS AN UPDATED COPY OF THE FORM APPROVED ON 01/02/20. 1. CONTROLLING OBSTACLE UPDATED FOR THE FOLLOWING 3 SEGMENTS: INITIAL FROM YANKK, INITIAL FROM REDII AND INTERMEDIATE FROM AZATY. SEGMENT ALTITUDES REMAIN THE SAME.</p>					

Digitally signed by
WARDELL HENNING
Jul 14, 2020



FIPC BASIC FORM						
PROCEDURE: RNAV (GPS) RWY 20 AMDT 2			AIRPORT NAME: NORFOLK RGNL/KARL STEFAN		AIRPORT ID: KOFK	SPECIAL CONTROL NO: BG-06-050-20
FAC ID: KOFK20.02		CITY: NORFOLK			ST: NE	ORIG CHART DATE: 09/10/2020
DFL TYPE: PROC/S	THIRD PARTY: <input type="checkbox"/> YES	EST. TIME ON SITE: 0.4	REIMB. NUMBER:	PTS TASK ID:		
PREFLIGHT NOTES						
REVIEWER:					DATE:	
COMMENTS:					CHECK ONE:	
					<input type="checkbox"/> FLT CK REQ <input type="checkbox"/> NFCR <input type="checkbox"/> REJECT	
						YES
					CPV COMPLETE?	
					X	
PROCEDURE RESULTS						
INSPECTION DATE: 07/01/2020	CREW #: VN071	N #: N67	INSTRUMENT PROCEDURE STATUS: <input type="checkbox"/> SAT <input checked="" type="checkbox"/> SAT W/CHANGES <input type="checkbox"/> UNSAT		ARINC CODING: <input type="checkbox"/> SAT <input checked="" type="checkbox"/> SAT/GOLD <input type="checkbox"/> UNSAT	
FLIGHT INSPECTOR SIGNATURE: jeffrey w haring @ 07/02/2020 14:02			PRINTED NAME: HARING, JEFFREY WAYNE			NOTAM INITIATED? <input type="checkbox"/> YES <input checked="" type="checkbox"/> NO
FLIGHT INSPECTOR REMARKS: Obstruction 2106' Tower location N4210.38, W09716.82. Not there. Windmill Farm has encroached on the FAF AZATY. Both Charting errors. Runway/Procedure Survey sat. Approach sat except for FAF obstacle verification. Request Reverification of obstacle for FAF.						
IN-FLIGHT OBSTACLE REPORT						
OBSTRUCTION ID #:	COORDINATES OR LOCATION:	GNSS ALTITUDE (MSL):	BAROMETRIC ALTITUDE (MSL):	HEIGHT ABOVE GROUND LEVEL:		

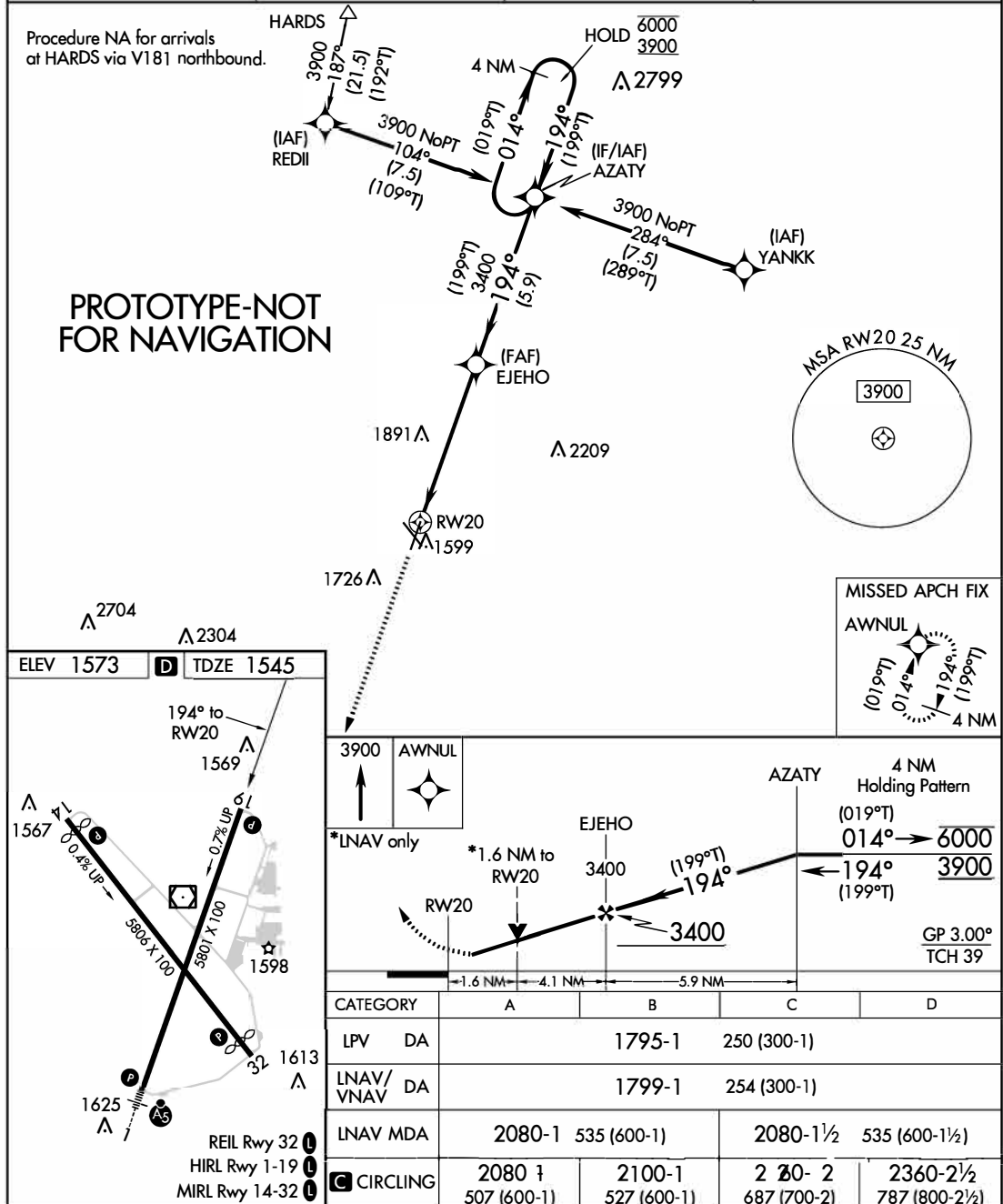
NORFOLK, NEBRASKA

AL-974 (FAA)

FIG

WAAS CH 56220 W20A	APP CRS 194°	Rwy Idg TDZE Apt Elev	5801 1545 1573	RNAV (GPS) RWY 20 NORFOLK RGNL/KARL STEFAN MEMORIAL FIELD (OFK)
--	------------------------	-----------------------------	---	---

RNP APCH			MISSED APPROACH: Climb to 3900 direct AWNUL and hold.
▼ Rwy 20 helicopter visibility reduction below ¾ SM NA. ▲ For uncompensated Baro-VNAV systems, LNAV/VNAV NA below -25°C or above 54°C.			
ASOS 119.025	MINNEAPOLIS CENTER 125.025 235.625	COLUMBUS RADIO 122.15	UNICOM 122.7 (CTAF) 0



NORFOLK, NEBRASKA

Amdt 2 FIG

NORFOLK RGNL/KARL STEFAN MEMORIAL FIELD (OFK)

41°59'N-97°26'W

RNAV (GPS) RWY 20

AUTOMATED AL-974 RNAV (GPS) RWY 20

NC-2

1-31-20

COMPILER: SQ

REVIEWER:

DBL CHKR:

EFF DATE: FIG

EXISTING

NORFOLK, NEBRASKA

AL-974 (FAA)

19115

WAAS CH 56220 W19A	APP CRS 194°	Rwy Idg TDZE Apt Elev 5801 1543 1573
--	------------------------	---

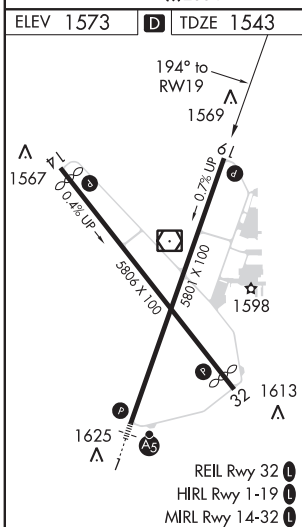
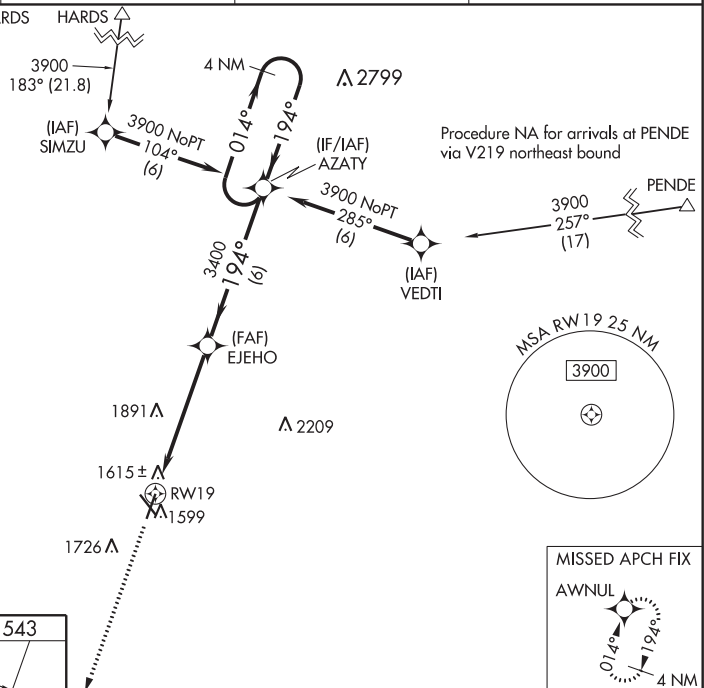
RNAV (GPS) RWY 19 NORFOLK RGNL/KARL STEFAN MEMORIAL FIELD (OFK)

⚠ Baro-VNAV NA when using Wayne altimeter setting. For uncompensated Baro-VNAV systems, LNAV/VNAV NA below -18°C (0°F) or above 46°C (114°F). DME/DME RNP-0.3 NA.
⚠ Visibility reduction by helicopters NA. When local altimeter setting not received, use Wayne altimeter setting and increase all DA/MDA 80 feet, increase LPV and LNAV/VNAV all Cals visibility ¼ mile, LNAV/Circling Cat C and D visibility ¼ mile.

MISSED APPROACH:
Climb to 3900 direct
AWNUL and hold.

ASOS 119.025	MINNEAPOLIS CENTER 125.025 235.625	COLUMBUS RADIO 122.15	UNICOM 122.7 (CTAF) 1
------------------------	--	---------------------------------	---------------------------------

Procedure NA for arrivals at HARDS via V181 northbound.



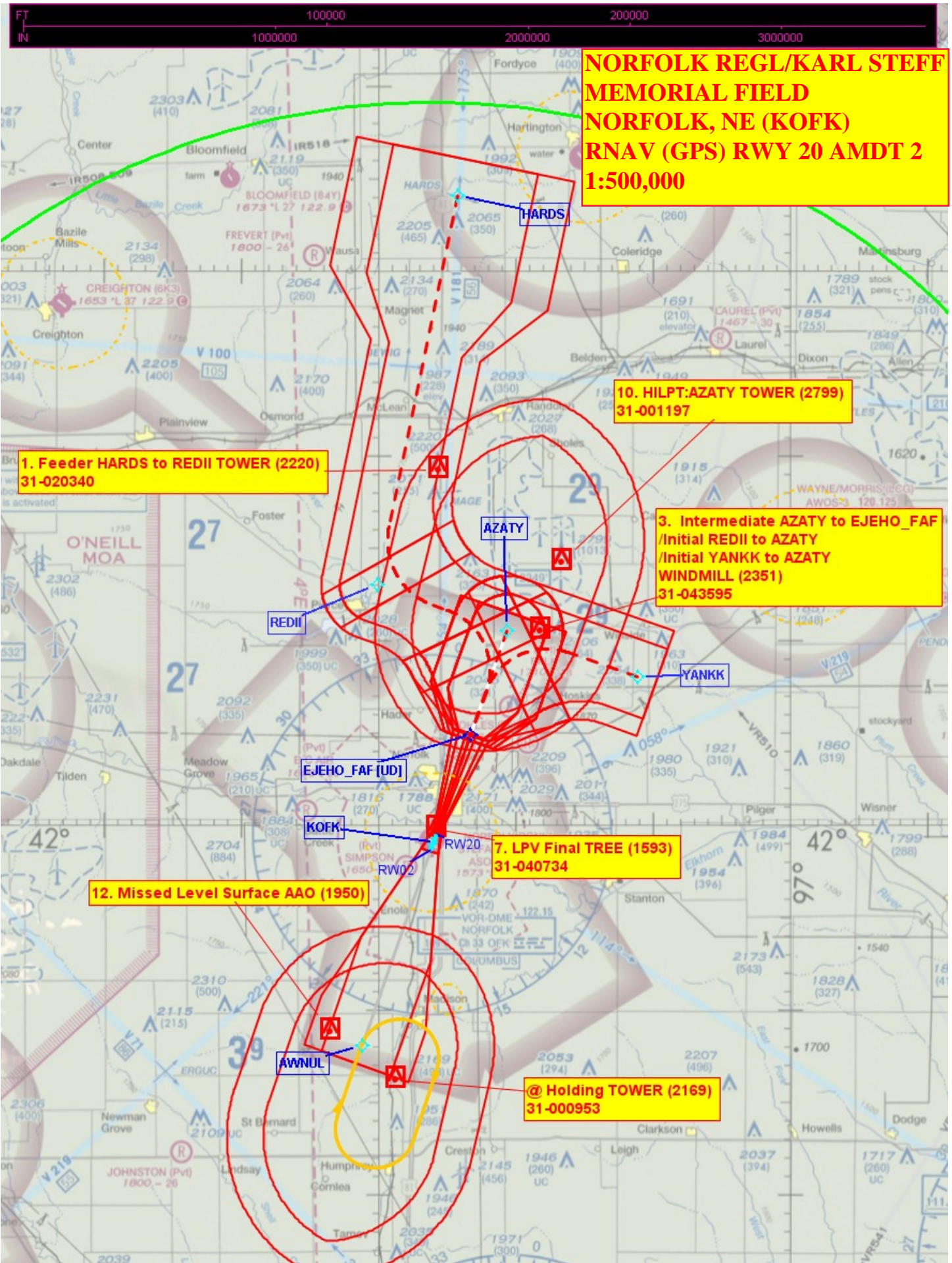
<p>AWNUL VGSI and RNAV glidepath not coincident (VGSI Angle 3.00/TCH 40).</p>			
<p>EJEHO 3400 AZATY 4 NM Holding Pattern</p>			
<p>RW19 3400 GP 3.00° TCH 48</p>			
CATEGORY	A	B	C
LPV DA	1820-1 277 (300-1)		
LNAV/VNAV DA	1900-1¼ 357 (400-1¼)		
LNAV MDA	2180-1 637 (700-1)	2180-1¾ 637 (700-1¾)	2180-2 637 (700-2)
CIRCLING	2180-1 607 (700-1)	2180-1¾ 607 (700-1¾)	2180-2 607 (700-2)

NORFOLK, NEBRASKA
Amdt 1B 17DEC09

NORFOLK RGNL/KARL STEFAN MEMORIAL FIELD (OFK)
41°59'N-97°26'W
RNAV (GPS) RWY 19

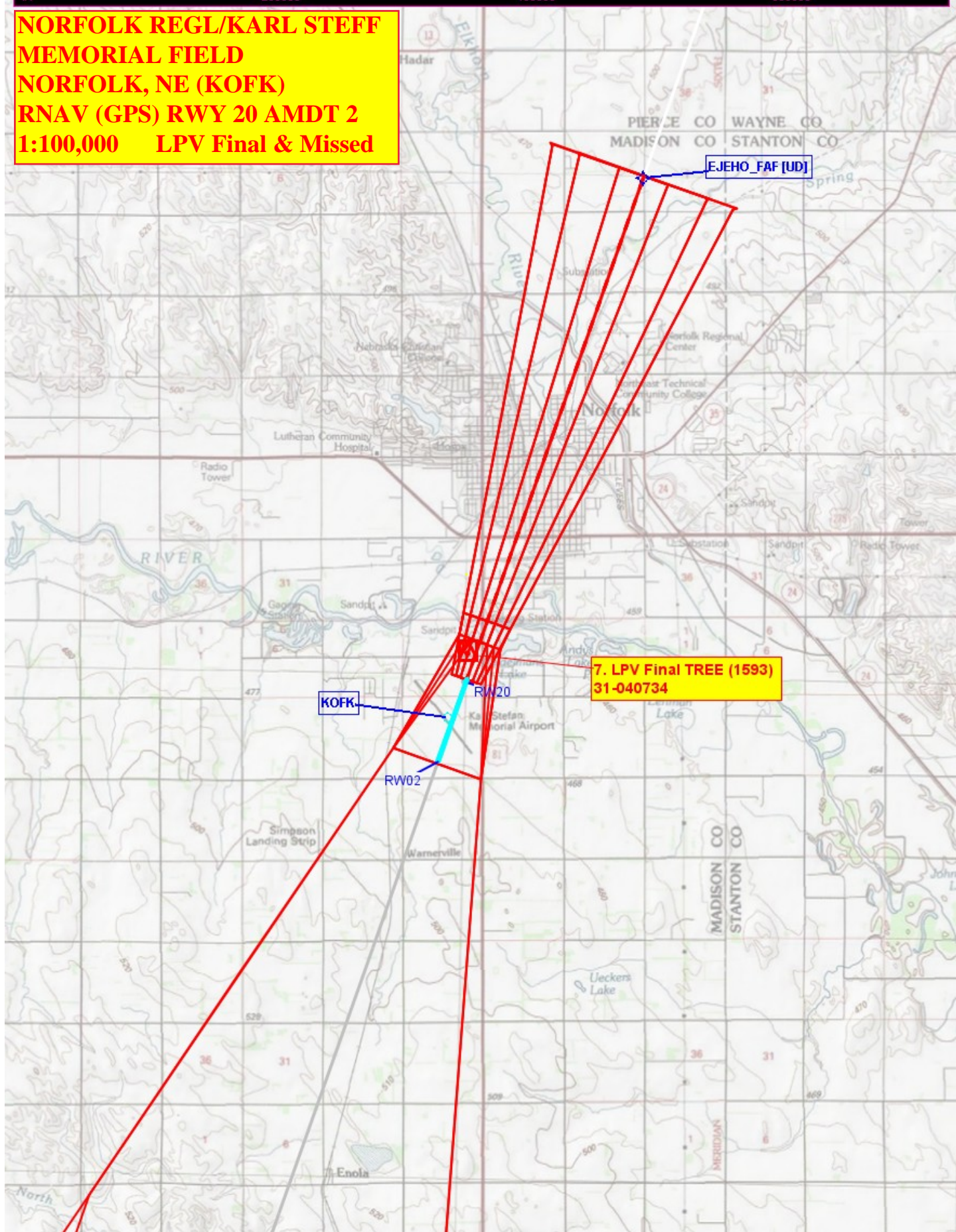
NC-2, 02 JAN 2020 to 30 JAN 2020

NC-2, 02 JAN 2020 to 30 JAN 2020

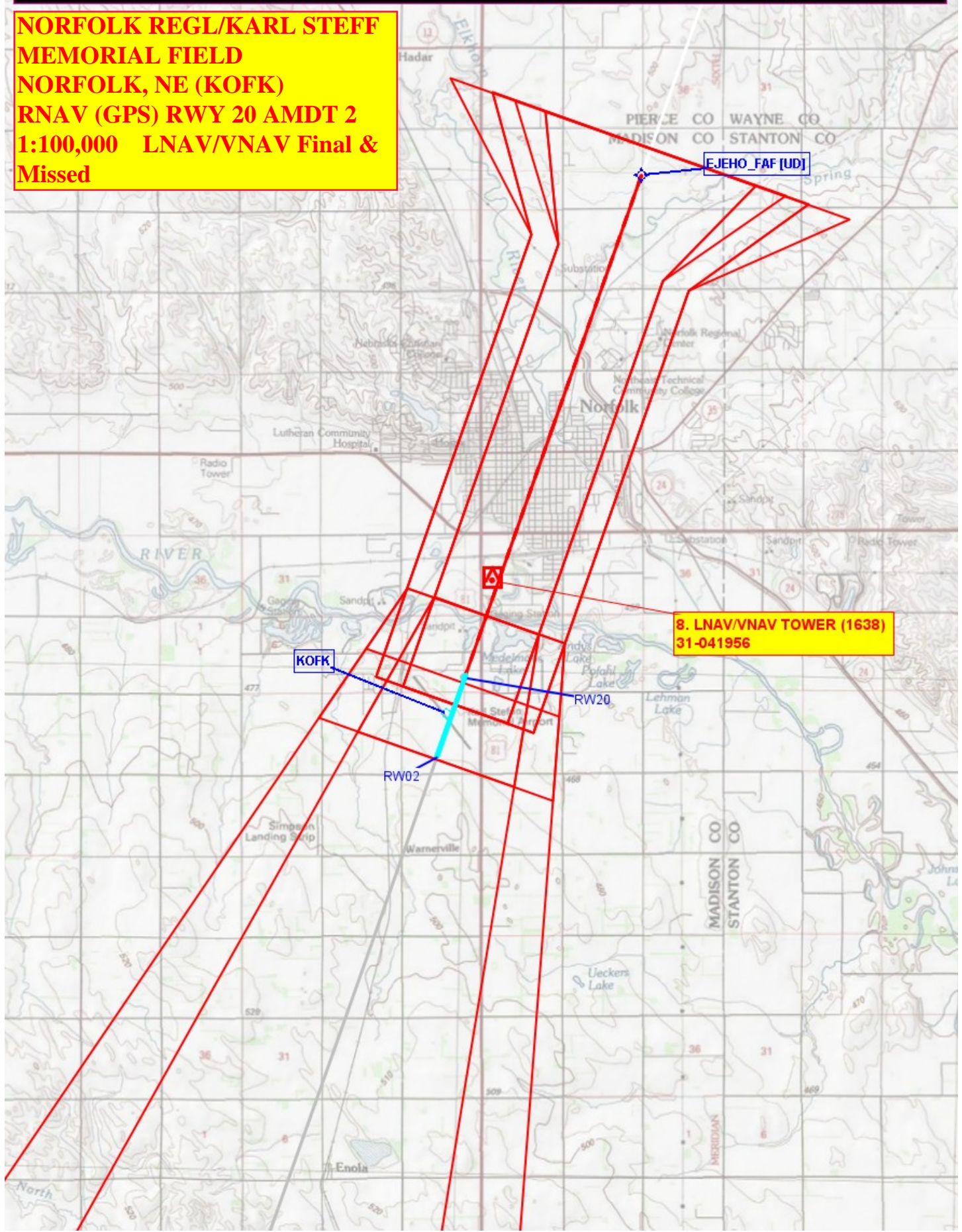


FT IN 20000 40000 60000

**NORFOLK REGL/KARL STEFF
MEMORIAL FIELD
NORFOLK, NE (KOFK)
RNAV (GPS) RWY 20 AMDT 2
1:100,000 LPV Final & Missed**



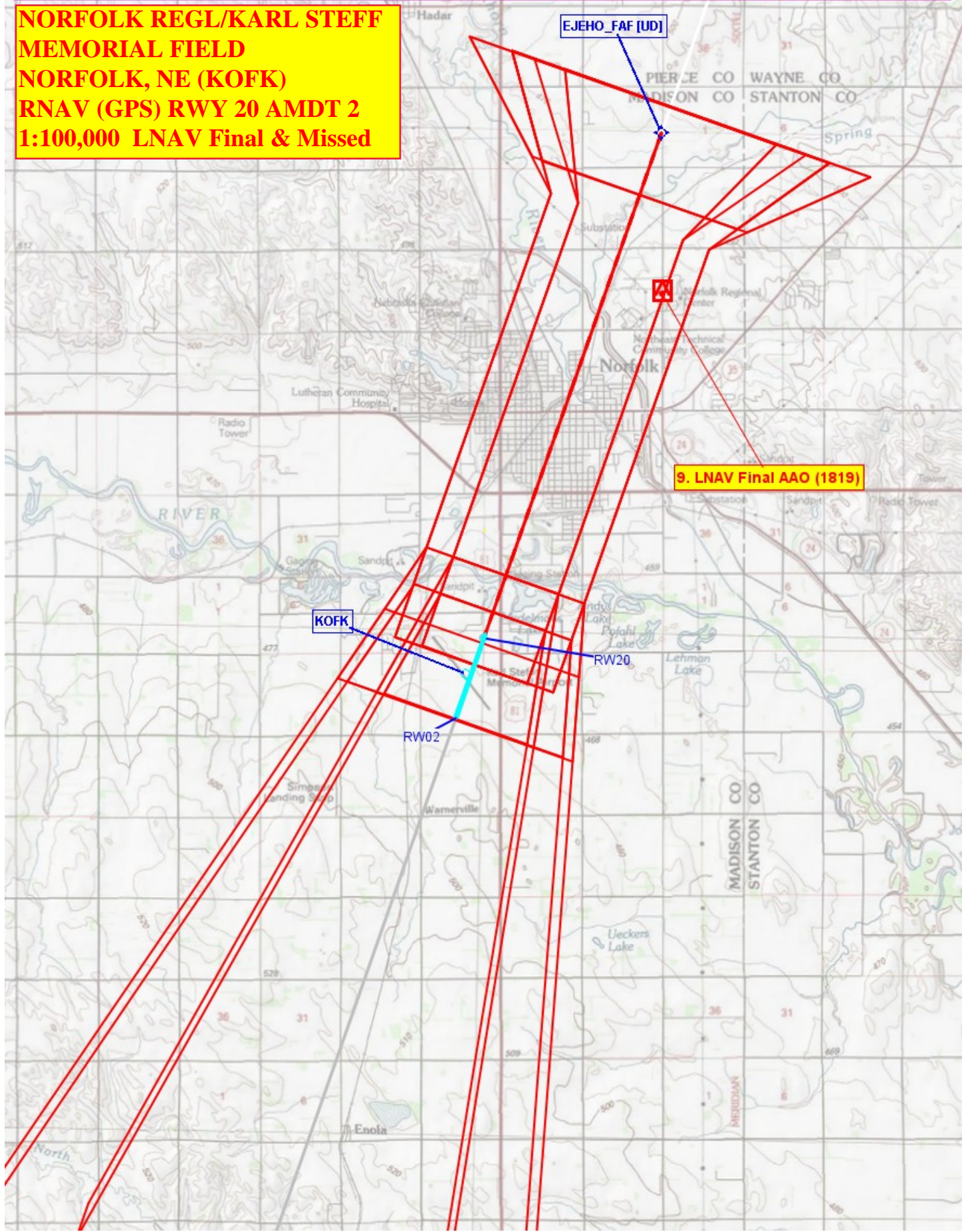
**NORFOLK REGL/KARL STEFF
MEMORIAL FIELD
NORFOLK, NE (KOFK)
RNAV (GPS) RWY 20 AMDT 2
1:100,000 LNAV/VNAV Final &
Missed**

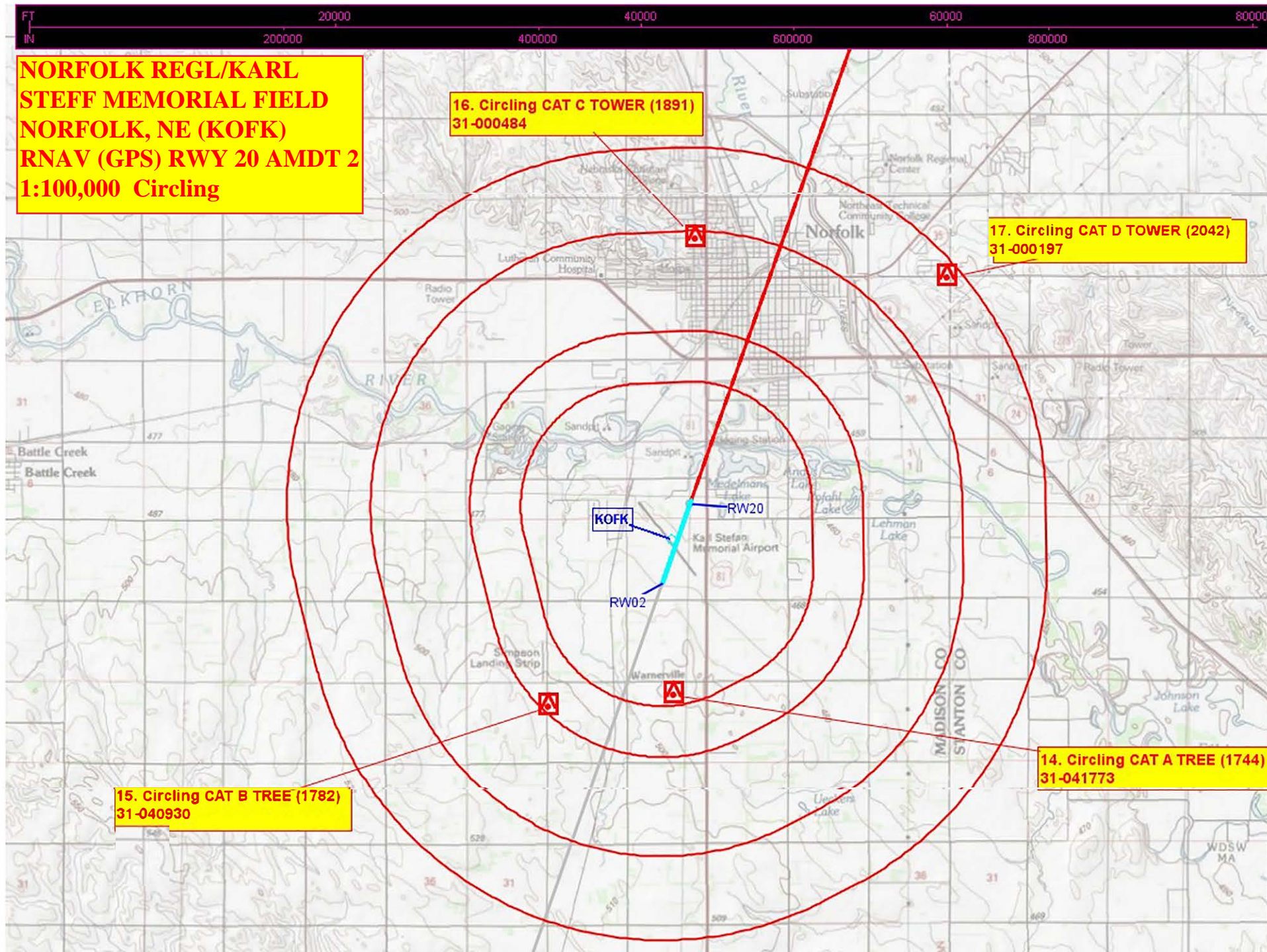


**8. LNAV/VNAV TOWER (1638)
31-041956**



**NORFOLK REGL/KARL STEFF
MEMORIAL FIELD
NORFOLK, NE (KOFK)
RNAV (GPS) RWY 20 AMDT 2
1:100,000 LNAV Final & Missed**





**FEDERAL AVIATION ADMINISTRATION
CATEGORICAL EXCLUSION DECLARATION
Proposed Procedure Changes at Karl Stefan Memorial Field (KOFK)
located at Norfolk, Nebraska**

Description of Action:

The Norfolk Regional Airport/Karl Stefan Memorial Field located in Norfolk, Nebraska has completed some updates to their facility. Threshold displacement has changed 300 feet on Runway 2 requiring adjustments to Fixes to be in criteria. Also adding values to category D on the Lines of Minimum table. The FAA does not anticipate any changes to the ground tracks or lowering of altitudes over noise sensitive areas with these changes.

This action proposes to amend eight (8) procedures:

- **ILS or LOC RWY 2** – Headings change to new runway numbers 2/20 from 1/19.
- **RNAV (GPS) RWY 2** – Headings change to new runway numbers 2/20 from 1/19; PFAF moved for new displaced threshold which changed from 5801 to 5501; Intermediate fix AWNUL remains constant; Fixes VEPCU and SAHIW moved from 6 miles to 7.5 miles from fix AWNUL; delete note concerning ERGUC feeder; add values to category D on the Lines of Minimum table.
- **RNAV (GPS) RWY 14** – Headings change to new runway numbers 2/20 from 1/19; PFAF moved for new displaced threshold which changed from 5801 to 5501; Intermediate fix ADUWU remains constant; Fixes SIKAZ and VEFMA moved from 6 miles to 7.5 miles from fix ADUWU; add values to category D on the Lines of Minimum table.
- **RNAV (GPS) RWY 20** – Headings change to new runway numbers 2/20 from 1/19; Intermediate fix AZATY remains constant; Fixes VEDTI and SIMZU moved from 6 miles to 7.5 miles from fix AZATY to meet criteria; delete note concerning PENDE feeder; add values to category D on the Lines of Minimum table.
- **RNAV (GPS) RWY 32** – Headings change to new runway numbers 2/20 from 1/19; Intermediate fix AYEDU remains constant; Fixes VEGRY and SEWRU moved from 6 miles to 7.5 miles from fix AYEDU; delete note concerning PENDE and ERGUC feeders; add values to category D on the Lines of Minimum table.
- **VOR RWY 20** – Headings change to new runway numbers 2/20 from 1/19; add values to category D on the Lines of Minimum table.
- **VOR RWY 14** – Headings change to new runway numbers 2/20 from 1/19; add values to category D on the Lines of Minimum table.
- **VOR RWY 32** – Headings change to new runway numbers 2/20 from 1/19; add values to category D on the Lines of Minimum table.

Declaration of Exclusion:

The FAA has reviewed the above referenced proposed action and it has been determined, by the undersigned, to be categorically excluded from further environmental documentation according to FAA Order 1050.1F, "Environmental Impacts: Policies and Procedures." These procedure amendments require no further environmental review, as the modifications meet *de minimis* requirements in that Aircraft operations average 31/day for 12-month period ending June 26, 2019. The implementation of this action will not result in any extraordinary circumstances in accordance with FAA Order 1050.1F.

Basis for this Determination:

This review was conducted in accordance with policies and procedures in Department of Transportation Order 5610.1C, "Procedures for Considering Environmental Impacts" and FAA Order 1050.1F.

The applicable Categorical Exclusion is:

5- 6.5.k: Publication of existing air traffic control procedures that do not essentially change existing tracks; create new tracks, change altitude, or change concentration of aircraft on these tracks. (ATO, AVS)

Concurrence/Reviewed By:

Signature: _____

Title: Jennifer Sheetz, NISC Contractor,
Environmental Specialist, ATO Central Service Center, AJV-C2

Approved By:

Signature: _____

Title: Steve Szukala, (A) Manager,
Operations Support Group, ATO Central Service Center, AJV-C2