

Flight Procedures Cover Page	Task Action: Cancellation	Task Type: IAP	Estimated Chart Date: 05/14/2026	APWS Task ID: A4ECF4CDB284448D86D21DC4719E669E	APWS Project ID: FA5DA74237C94824A9E172B0E42D3DA8
Procedure: ILS Y OR LOC Y RWY 28 AMDT 0B		Enroute: NO	Specialist: Vega, Ana		Agreement Number:
Airport ID: KSVH			Airport City: STATESVILLE		State: NC
Facility ID: SVH	Facility Type: ILS	Flight Inspection Remark Type:			
<p>Procedure Comments: CANCELLATION OF ILS Y OR LOC Y RWY 28 PROCEDURE</p> <p>CONTACT: ROBERT HAMILTON AJV-A33 PHONE: 405-954-4608</p>					




LOC/DME I-SVH 111.75 Chan 54 (Y)	APP CRS 285°	Rwy Idg 6453 TDZE 967 Apt Elev 968
--	------------------------	---

ACTIVE ILS Y or LOC Y RWY 28

STATESVILLE RGNL (SVH)

DME required.

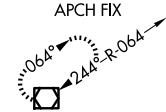
▼ When local altimeter setting not received, use Lincolnton altimeter setting and increase ILS DA to 1219 and all MDA 60 feet; increase S-LOC 28 Cats C/D visibility 1/8 mile and Circling Cat C visibility 1/4 mile. VDP NA when using Lincolnton altimeter setting. For inop MALSRR when using Lincolnton altimeter setting, increase S-ILS 28 all Cats visibility to 7/8 mile and S-LOC 28 Cats C/D visibility to 1 mile.

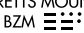
MALSRR 

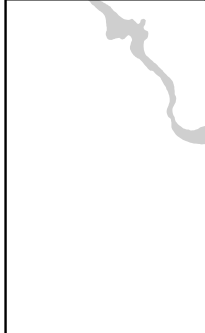
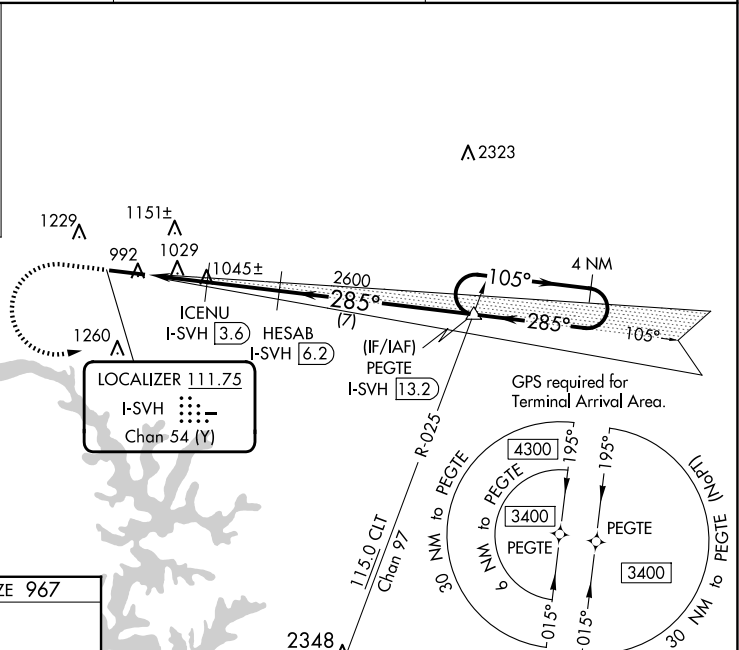
MISSED APPROACH: Climb to 1700 then climbing left turn to 3400 on heading 105° and on CLT VOR/DME R-025 to PEGTE INT/I-SVH 13.2 DME and hold.

AWOS-3 119.225	ATLANTA CENTER 125.15 263.0	UNICOM 123.075 (CTAF) 0
--------------------------	---------------------------------------	-----------------------------------

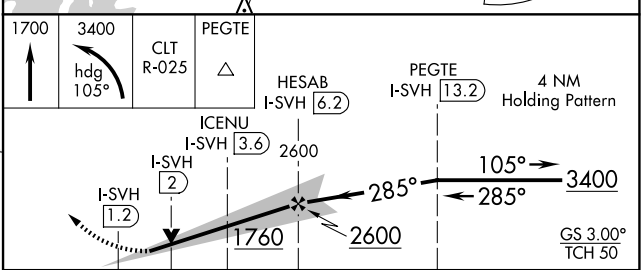
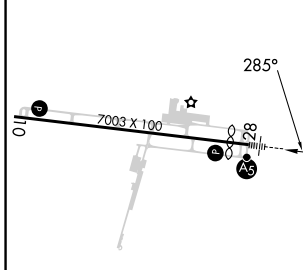
ALTERNATE MISSED APCH FIX





BARRETT'S MOUNTAIN
BZM 
113.75
Chan 84 (Y)



ELEV 968	D	TDZE 967
----------	----------	----------



CATEGORY	A	B	C	D
S-ILS 28	1167-1/2		200 (200-1/2)	
S-LOC 28	1280-1/2		313 (400-1/2)	
C CIRCLING	1420-1 452 (500-1)	1540-1 572 (600-1)	1540-1 1/2 572 (600-1 1/2)	1560-2 592 (600-2)

REIL Rwy 10 
HIRL Rwy 10-28 

SE-2, 02 OCT 2025 to 30 OCT 2025

SE-2, 02 OCT 2025 to 30 OCT 2025