

Flight Procedures Cover Page	Task Action: P-NOTAM	Task Type: IAP	Estimated Chart Date: 07/09/2026	APWS Task ID: A53DCDFFBEF8431BBF00456145E596B1	APWS Project ID: 3A2E4DBDEA094D76BAA31A8D64D83A15
Procedure: RNAV (GPS) RWY 13 AMDT 1A		Enroute: NO	Specialist: Johnson, Timothy		Agreement Number:
Airport ID: KGGI			Airport City: GRINNELL		State: IA
Facility ID:	Facility Type:	Flight Inspection Remark Type:			

Procedure Comments:

Visibility Initiative (Garmin) - Update IAP visibility minimums IAW Order 8260.3, Chapter 3, Section 3-3. Visibility Minimums.

PROCESSED IAW TECHNICAL SUPPORT GROUP (AJF-17) MEMO DATED 07/07/2021, SUBJECT: GUIDANCE FOR PROCEDURAL CHANGES REQUIRING FLIGHT INSPECTION/VALIDATION.

CONTACT: CASEY HILL (405) 954-0624.



GRINNELL, IOWA

AL-6893 (FAA)

23222

OLD

WAAS CH 58107 W13A	APP CRS 129°	Rwy Idg TDZE 1005 Apt Elev 1008	5000
--	------------------------	---	-------------

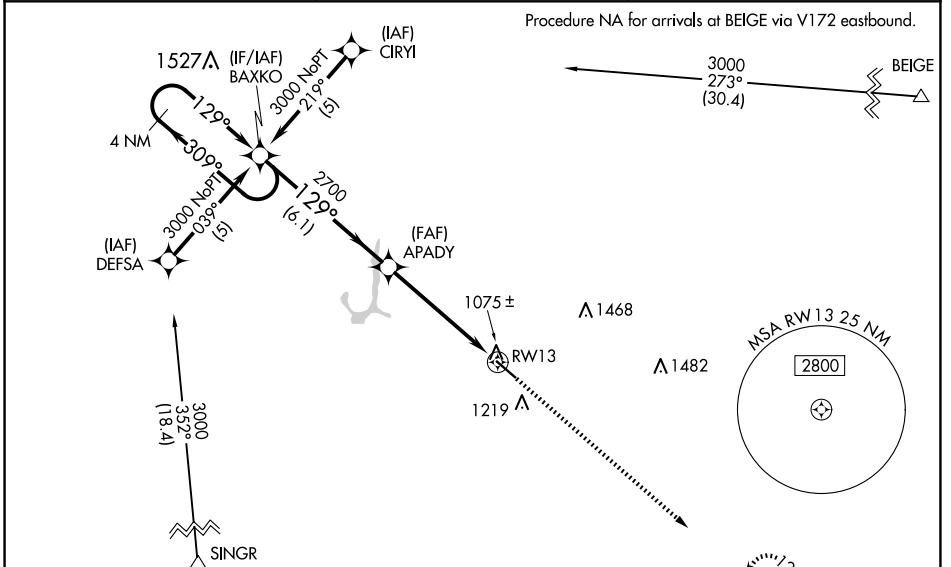
RNAV (GPS) RWY 13

GRINNELL RGNL (GGI)

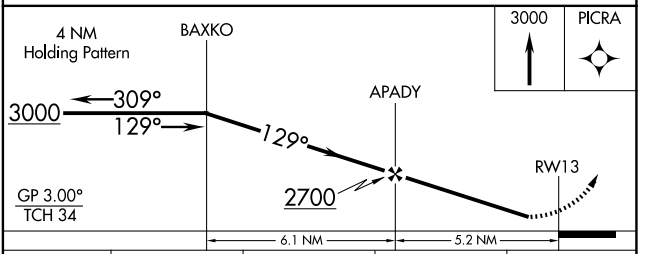
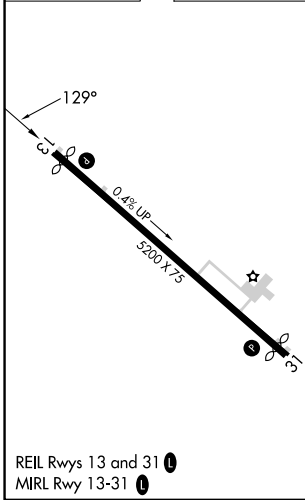
⚠ When local altimeter setting not received, use Newton altimeter setting and increase all DAs 38 feet and all MDAs 40 feet, increase LPV and LNAV/VNAV visibility ¼ mile all Cats and LNAV Cat C visibility ¼ mile. Baro-VNAV NA when using Newton altimeter setting. For uncompensated Baro-VNAV systems, LNAV/VNAV NA below -17°C (2°F) or above 54°C (130°F). Visibility reduction by helicopters NA. DME/DME RNP-0.3 NA.

MISSED APPROACH: Climb to 3000 direct PICRA and hold.

AWOS-3 120.725	CHICAGO CENTER 127.05 282.35	UNICOM 122.8 (CTAF) 0
--------------------------	--	---------------------------------



ELEV 1008	TDZE 1005
-----------	-----------



CATEGORY	A	B	C	D
LPV DA	1284-1 279 (300-1)			NA
LNAV/VNAV DA	1415-1½ 410 (500-1½)			NA
LNAV MDA	1480-1	475 (500-1)	1480-1¼ 475 (500-1¼)	NA
CIRCLING	1620-1	612 (700-1)	1620-1¾ 612 (700-1¾)	NA

GRINNELL, IOWA
Amdt 1 05JUN08

41°43'N-92°44'W

RNAV (GPS) RWY 13

NC-3, 19 FEB 2026 to 19 MAR 2026

NC-3, 19 FEB 2026 to 19 MAR 2026