

Flight Procedures Cover Page	Task Action: FLIGHT CHECK	Task Type: IAP	Estimated Chart Date: 01/22/2026	APWS Task ID: A599C859EE49410C871127CC8F9D1E1D	APWS Project ID: 870CF5E913FB4DABAB306B368D8C8C1C
Procedure: ILS OR LOC RWY 4 AMDT 24		Enroute: NO	Specialist: Kunkler, Jamie		Agreement Number:
Airport ID: KMLU			Airport City: MONROE		State: LA
Facility ID: MLU	Facility Type: ILS	Flight Inspection Remark Type: New FC Slot			

Procedure Comments:
ACTIVE DATA USED FOR AIRPORT, PENDING DATA USED FOR I-MLU.

SABAR LOM DECOMMISSIONING.

CONTACT CASIMIR TABAKA 405.954.7931.

QUALITY
9
CHECKED
BEGUE

QUALITY
39
CHECKED

LOC I-MLU 109.5	APP CRS 042°	Rwy Ldg 7504
		TDZE 78
		Apt Elev 79

ILS or LOC RWY 4

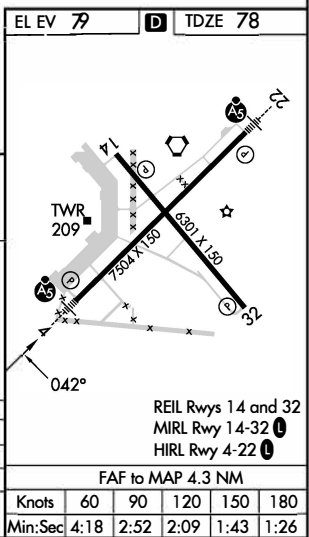
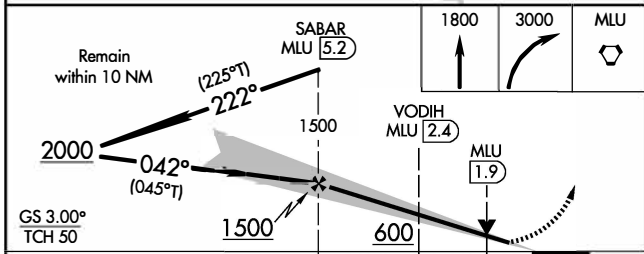
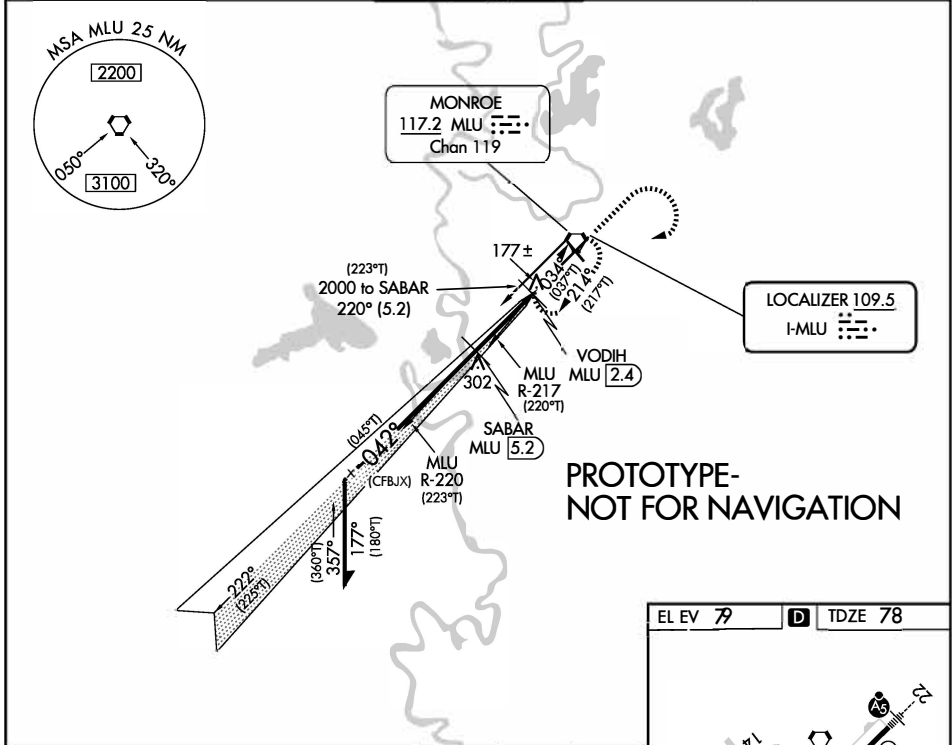
MONROE RGNL (MLU)

DME or RADAR required.
RADAR required for procedure entry at SABAR/MLU 5.11 DME/RADAR.

MALSRL
MISSED APPROACH:
Climb to 1800 then climbing right turn to 3000 direct MLU VORTAC and hold, continue climb-in-hold to 3000.

⚠ Circling Rwy 14 NA at night. DME from MLU VORTAC. DME use requires simultaneous reception of I-MLU and MLU DME.
For inop ALS, increase S-LOC 4 Cat C/D visibility to RVR 550.
*RVR 1800 authorized with use of FD or HUD to DA (NA when using BQP altimeter setting).

ATIS 125.05	MONROE APP CON * 118.15 290.475	MONROE TOWER * 118.9 (CTAF) 0 257.8	GND CON 121.9	UNICOM 122.95
-----------------------	---	---	-------------------------	-------------------------



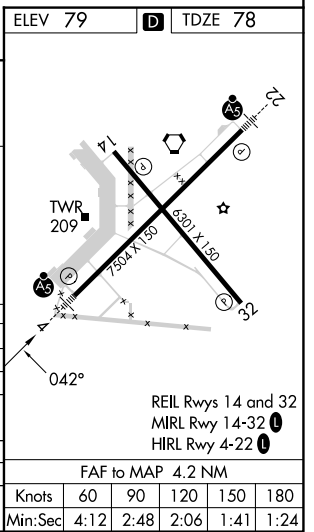
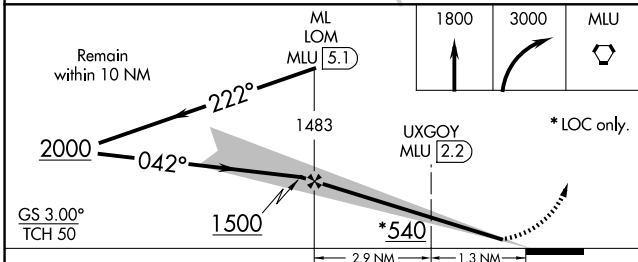
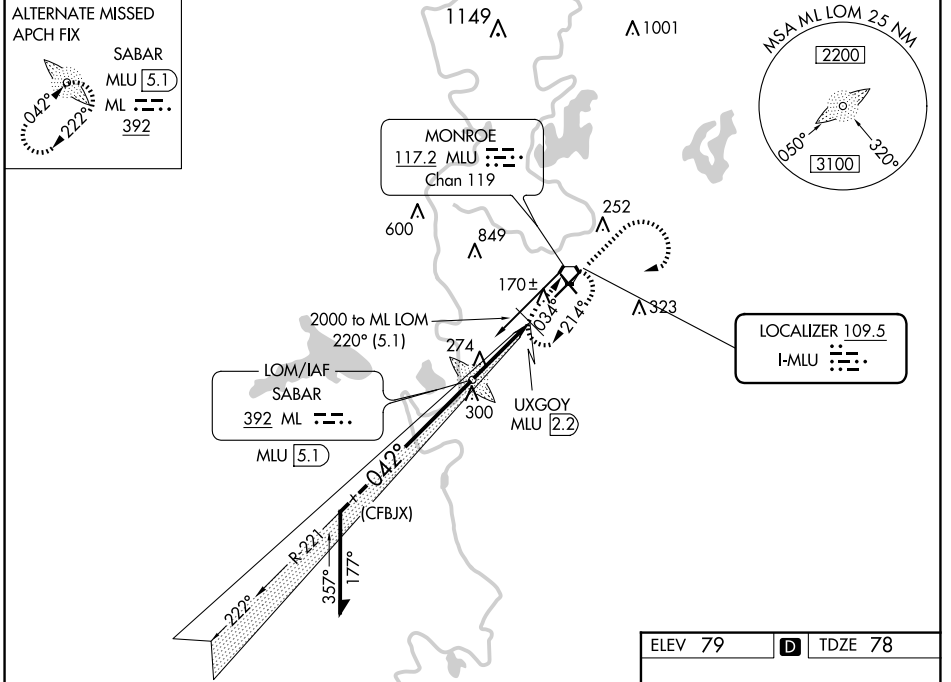
CATEGORY	A	B	C	D
S-ILS 4*	278/24 200 (200-½)			
S-LOC 4	440/24	362 (500-½)	440/35	362 (500-½)
CIRCLING	580-1	501 (600-1)	740-1¾ 661(700-1¾)	1160-3 1081 (1100-3)

LOC I-MLU	APP CRS	Rwy Idg	7504
109.5	042°	TDZE	78
		Apt Elev	79

ILS or LOC RWY 4
MONROE RGNL (MLU)

ADF or DME required for procedure entry.		MALSR	MISSED APPROACH: Climb to 1800 then climbing right turn to 3000 direct MLU VORTAC and hold.
⚠ Circling Rwy 14 NA at night. For inop ALS, increase S-LOC 4 Cat C/D visibility to 1½ SM. ⚠ UXGOY FIX MINIMUMS: For inop ALS, increase S-LOC 4 Cat C/D visibility to RVR 5500. ASR **RVR 1800 authorized with the use of FD or AP or HUD to DA. # DME from MLU VORTAC.			

ATIS	MONROE APP CON *	MONROE TOWER *	GND CON	CLNC DEL	UNICOM
125.05	118.15 290.475	118.9 (CTAF) 0 257.8	121.9	121.65	122.95



CATEGORY	A	B	C	D
S-ILS 4		**278/24	200 (200-½)	
S-LOC 4	540/24	462 (500-½)	540/50	462 (500-1)
CIRCLING	580-1	501 (600-1)	740-1¾ 661(700-1¾)	1160-3 1081 (1100-3)
# UXGOY FIX MINIMUMS				
S-LOC 4	420/24	342 (400-½)	420/30	342 (400-¾)
CIRCLING	580-1	501 (600-1)	740-1¾ 661 (700-1¾)	1160-3 1081 (1100-3)

SC-4, 17 APR 2025 to 15 MAY 2025

SC-4, 17 APR 2025 to 15 MAY 2025

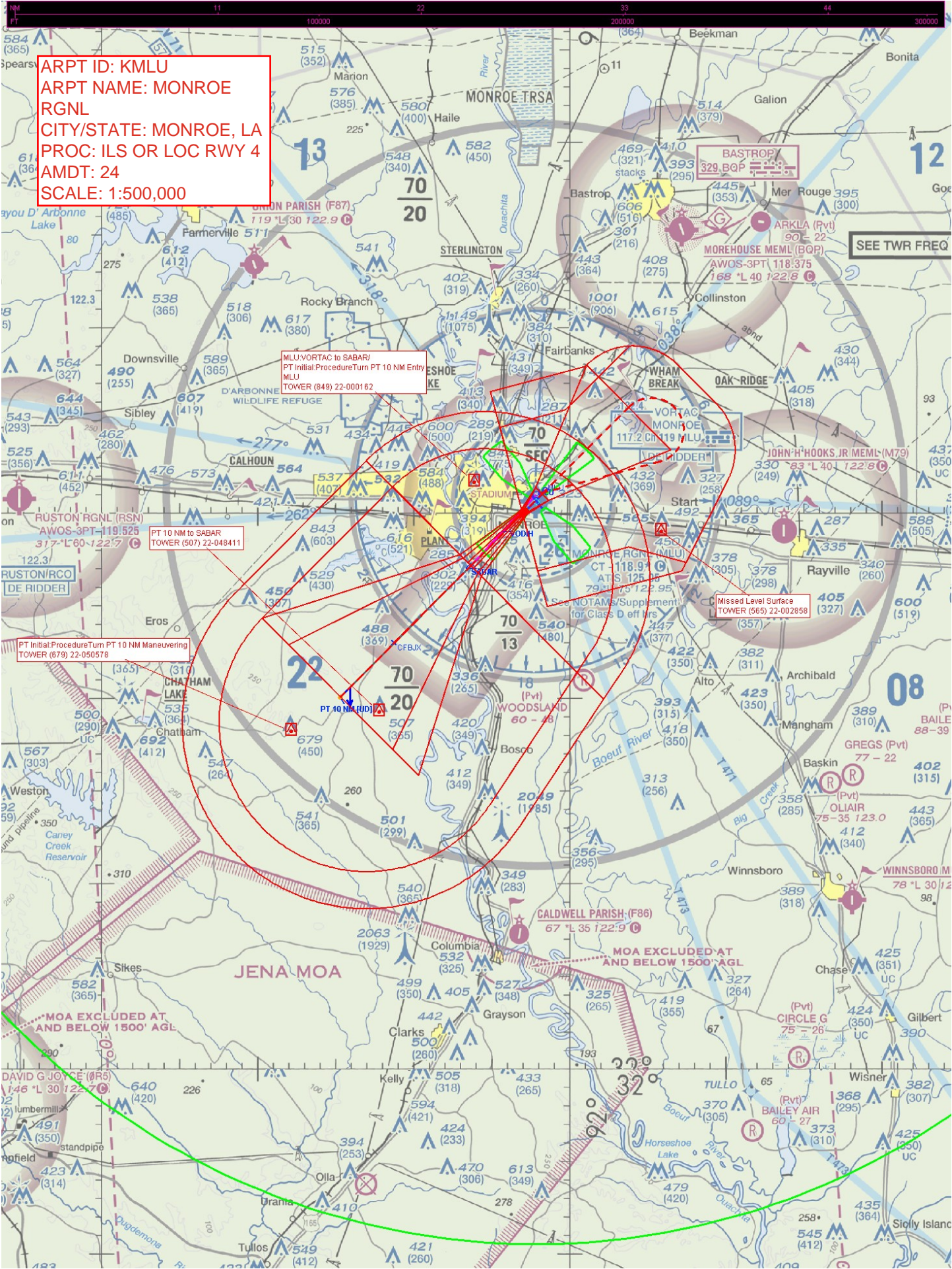
ARPT ID: KMLU
ARPT NAME: MONROE
RGNL
CITY/STATE: MONROE, LA
PROC: ILS OR LOC RWY 4
AMDT: 24
SCALE: 1:500,000

MLU VORTAC to SABAR/
PT Initial Procedure Turn PT 10 NM Entry
MLU
TOWER (849) 22-000162

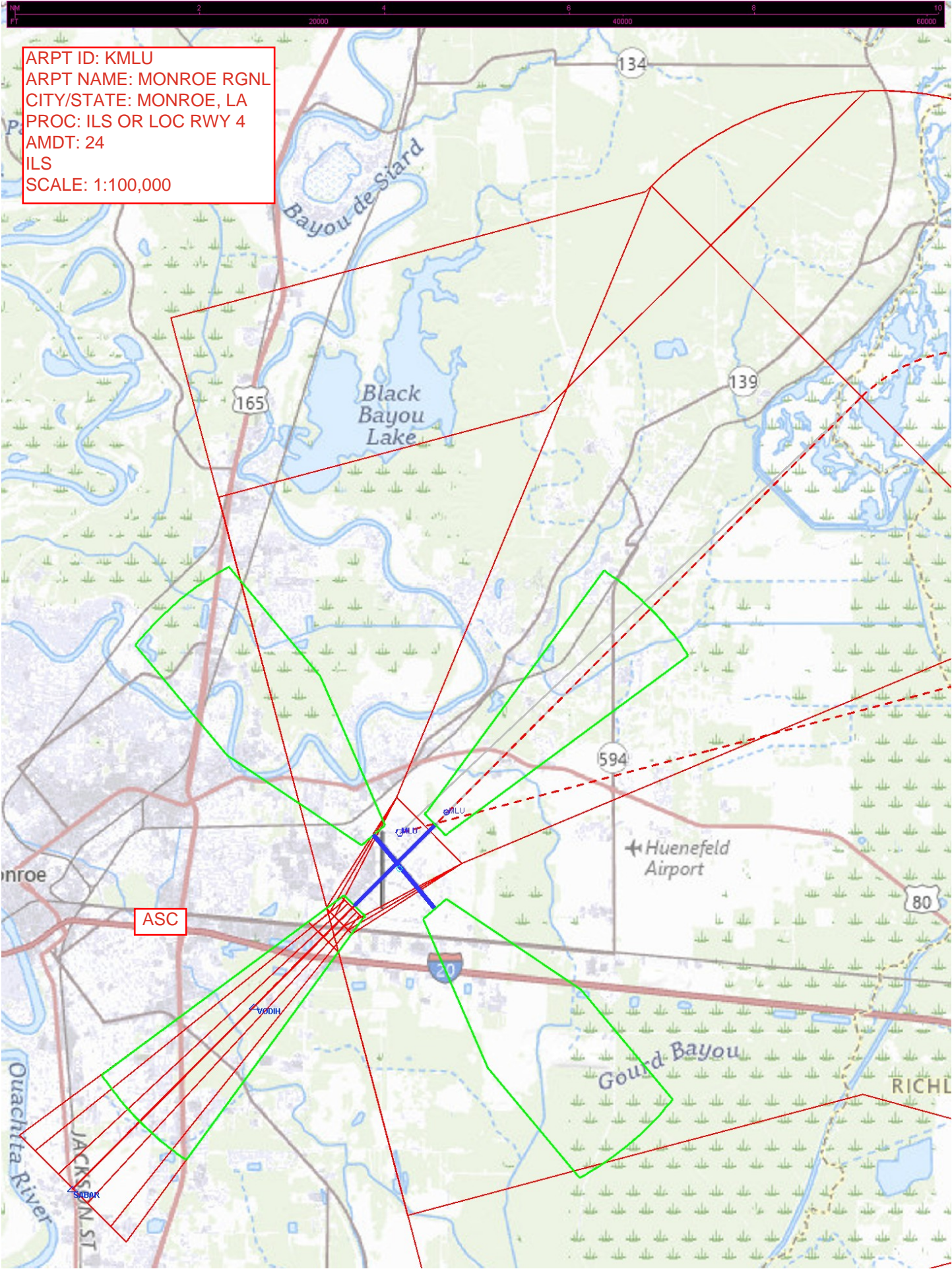
PT 10 NM to SABAR
TOWER (507) 22-048411

PT Initial Procedure Turn PT 10 NM Maneuvering
TOWER (679) 22-050578

Missed Level Surface
TOWER (565) 22-002858



ARPT ID: KMLU
ARPT NAME: MONROE RGNL
CITY/STATE: MONROE, LA
PROC: ILS OR LOC RWY 4
AMDT: 24
ILS
SCALE: 1:100,000



ARPT ID: KMLU
ARPT NAME: MONROE
RGNL
CITY/STATE: MONROE, LA
PROC: ILS OR LOC RWY 4
AMDT: 24
LOC, CIRCLING
SCALE: 1:100,000

