

WAAS CH 42814 W14A	APP CRS 141°	Rwy Idg 6007 TDZE 64 APT Elev 64
--------------------------	------------------------	---

RNAV (GPS) RWY 14

YUBA COUNTY (KMYV)

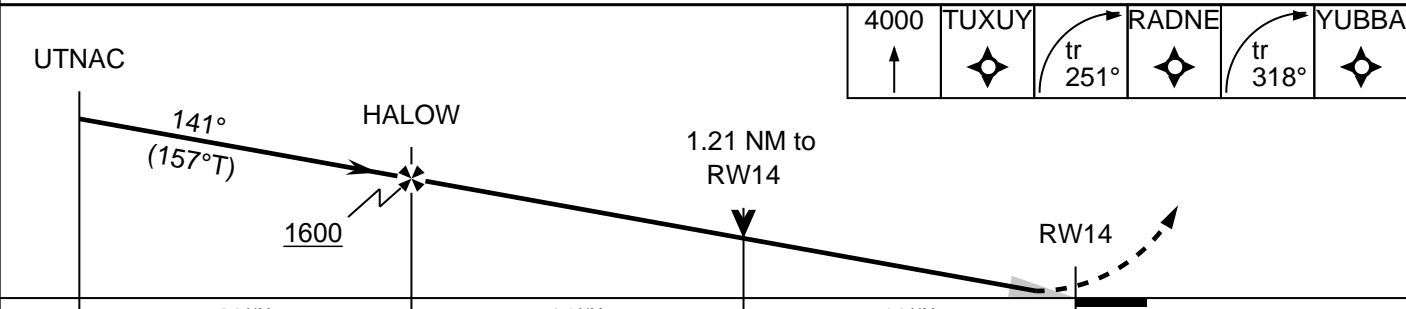
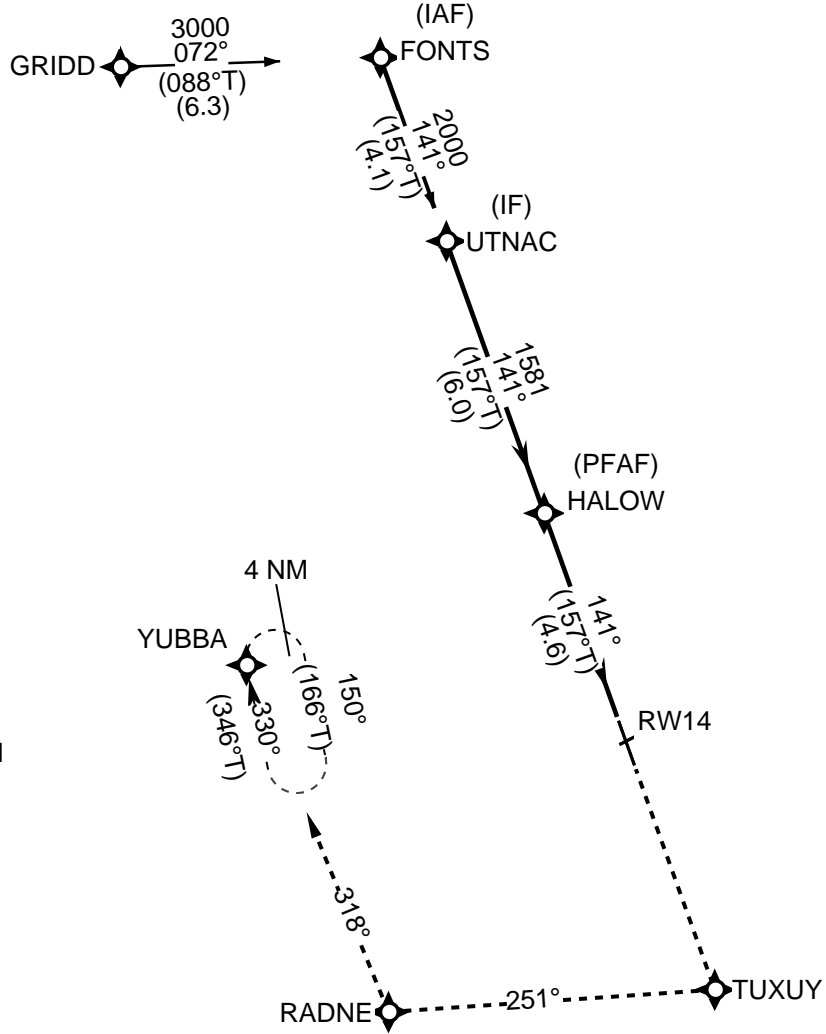
RNP APCH - GPS.

MISSED APPROACH: CLIMB TO 4000 DIRECT TUXUY AND ON TRACK 251° TO RADNE AND ON TRACK 318° TO YUBBA AND HOLD, CONTINUE CLIMB-IN-HOLD TO 4000.

CHART NOTE: FOR UNCOMPENSATED BARO-VNAV SYSTEMS, PROCEDURE NA BELOW -2°C OR ABOVE 54° C. CHART NOTE: CIRCLING RWY 05, 23 NA AT NIGHT.

ASOS **118.475** NORCAL APP CON **125.4 259.1** UNICOM **123.05 (CTAF)**

PROTOTYPE-NOT FOR NAVIGATION



CATEGORY	A	B	C	D
LPV	264-1 200 (200-1)			
LNAV/VNAV	470-1 406 (500-1)			
LNAV	500-1 436 (500-1)			
CIRCLING	540-1 476 (500-1)	560-1 1/2 496 (500-1 1/2)	640-2 576 (600-2)	