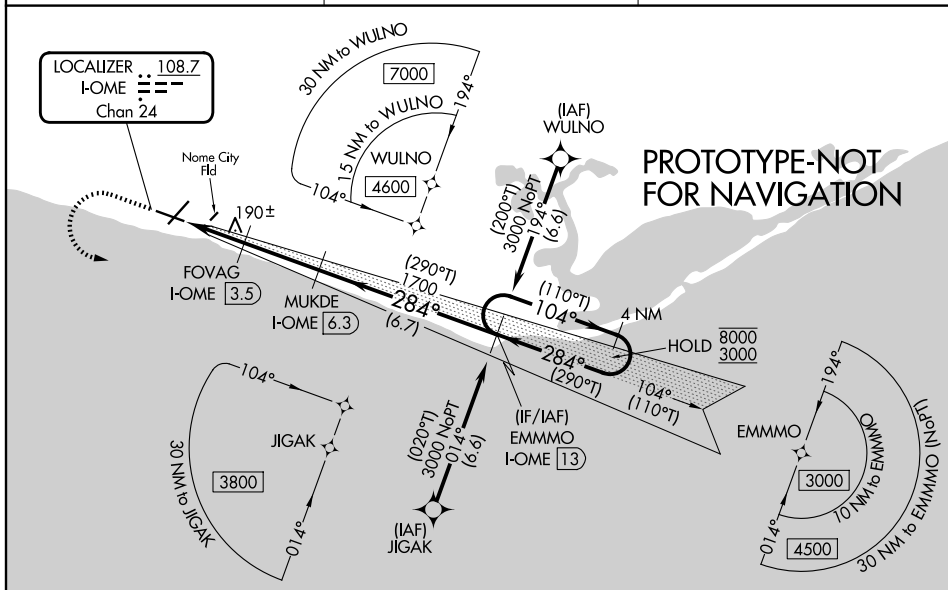


LOC/DME I-OME 108.7 Chan 24	APP CRS 284°	Rwy Ldg 6009 TDZE 25 Apt Elev 41
---	------------------------	---

ILS Y or LOC Y RWY 28

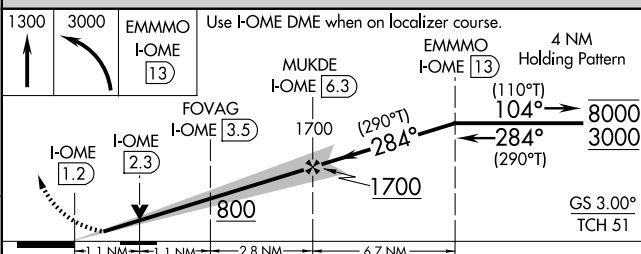
NOME (OME)(PAOM)

RNP APCH - GPS.		MALSR 	MISSED APPROACH: Climb to 1300 then climbing left turn to 3000 direct EMMMO and hold.
▼ Rwy 28 helicopter visibility reduction below RVR 4000 NA. Inop table does not apply to S-ILS Rwy 28. Circling NA for Cats C and D north of Rwy 10-28. For inop ALS, increase S-LOC 28 Cats A/B visibility to RVR 5500 and Cats C/D visibility to RVR 6000.			
AFIS 119.925	ANCHORAGE CENTER 133.3 290.4	NOME RADIO 123.6 (CTAF) 0	



ELEV **41** TDZE **25**

REIL Rwys 3 and 10
 HIRL Rwy 10-28
 MIRL Rwy 3-21



CATEGORY	A	B	C	D
S-ILS 28		225/40	200 (200-¾)	
S-LOC 28		440/40	415 (400-¾)	
CIRCLING	540-1 499 (500-1)	560-1 519 (600-1)	560-1½ 519 (600-1½)	700-2 659 (700-2)