

LOC/DME I-OME 108.7 Chan 24	APP CRS 284°	Rwy Ldg 6009 TDZE 25 Apt Elev 41
-------------------------------------------------	------------------------	-------------------------------------------------------------

ILS Y or LOC Y RWY 28

NOME (OME)(PAOM)

RNP APCH - GPS.

Rwy 28 helicopter visibility reduction below RVR 4000 NA. Inop table does not apply to S-ILS Rwy 28. Circling NA for Cats C and D north of Rwy 10-28. For inop ALS, increase S-LOC 28 Cats A/B visibility to RVR 5500 and Cats C/D visibility to RVR 6000. When Nome ESS closed, increase visibility all Cats to RVR 5000.

MALSR

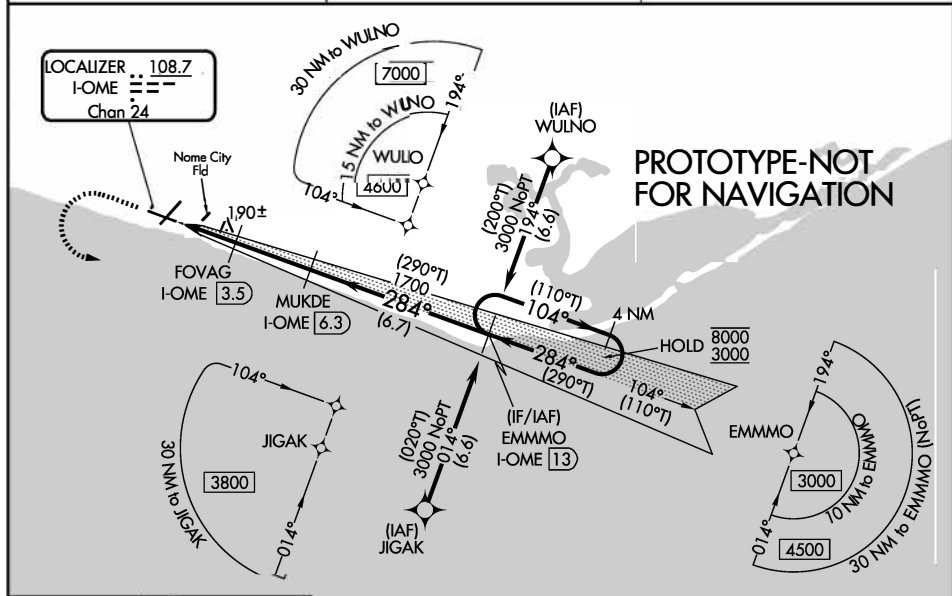


MISSED APPROACH: Climb to 1300 then climbing left turn to 3000 direct EMMMO and hold.

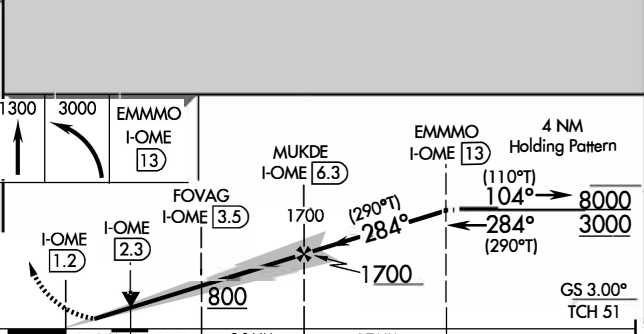
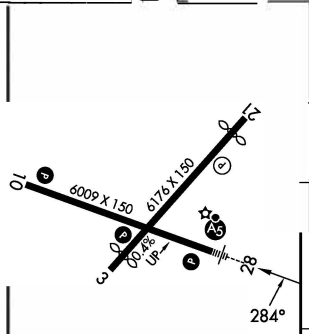
AFIS
119.925

ANCHORAGE CENTER
133.3 290.4

NOME RADIO
123.6 (CTAF) 0



ELEV **41** **D** TDZE **25**



	A	B	C	D
S-ILS 28		225/40	200 (200-¾)	
S-LOC 28		440/40	415 (400-¾)	
CIRCLING	540-1	560-1	560-1½	700-2
	499 (500-1)	519 (600-1)	519 (600-1½)	659 (700-2)

REIL Rwys 3 and 10 **0**
HIRL Rwy 10-28 **0**
MIRL Rwy 3-21 **0**