

Flight Procedures Cover Page	Task Action: FLIGHT CHECK	Task Type: IAP	Estimated Chart Date: 05/14/2026	APWS Task ID: A8ED2024CE5C4EA0BF375310C3532907	APWS Project ID: 2B20A859A3A4455FB6CAD1C7A73870E1
Procedure: VOR OR TACAN RWY 14 AMDT 18		Enroute: NO	Specialist: Weston, Daniel		Agreement Number:
Airport ID: KFWA			Airport City: FORT WAYNE		State: IN
Facility ID: FWA	Facility Type: VORTAC	Flight Inspection Remark Type: New FC Slot			

Procedure Comments:  
ACTIVE AIRNAV DATA USED.

CONTACT RAKE MCGRAW AJV-A422 405-954-8711

03/05/26: THIS IS AN UPDATED COPY OF THE FORMS DEVELOPED ON 10/31/25.

1. REQUIRED EFFECTIVE DATE CHANGED TO 05/14/2026.
2. FLIGHT CHECKED BY CHANGED TO PENDING.

QUALITY  
35  
CHECKED

QUALITY  
38  
CHECKED

QUALITY  
38  
CHECKED

QUALITY  
40  
CHECKED

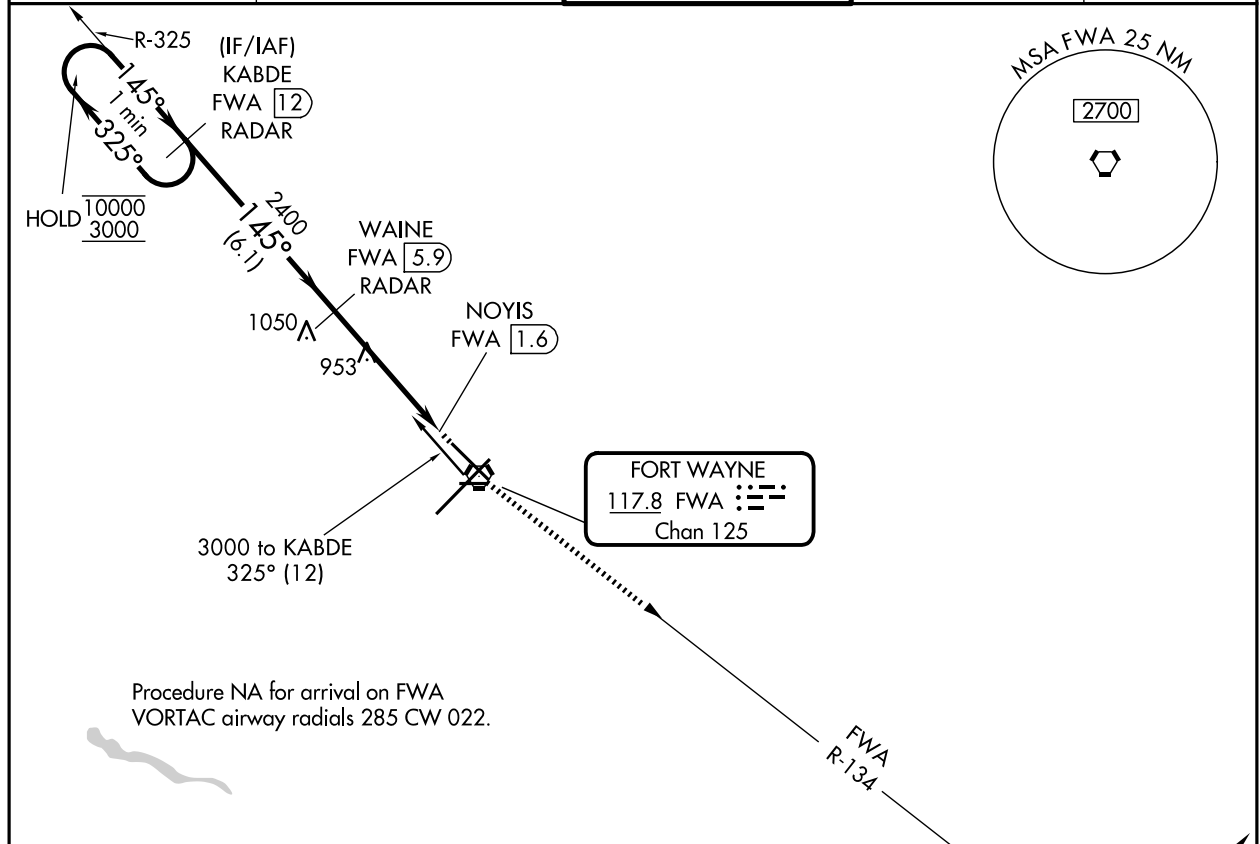
VORTAC FWA <b>117.8</b> Chan <b>125</b>	APP CRS <b>145°</b>	Rwy Ldg TDZE Apt Elev <b>8001</b> <b>802</b> <b>815</b>
---	------------------------	--

**OLD**

# VOR or TACAN RWY 14

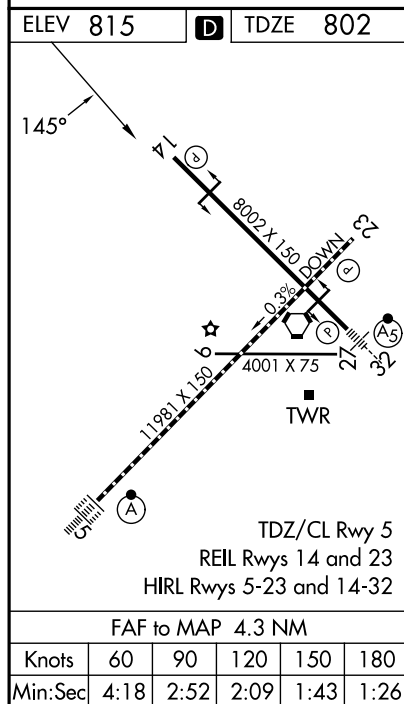
FORT WAYNE INTL (FWA)

DME or RADAR required.		MISSED APPROACH: Climb to 3000 on FWA R-134 to OSBER INT/FWA 22 DME and hold.		
ATIS <b>121.25 360.825</b>	FORT WAYNE APP CON <b>127.2 284.6</b>	FORT WAYNE TOWER <b>119.1 269.325</b>	GND CON <b>121.9 348.6</b>	CLNC DEL <b>124.75</b>



EC-2, 02 OCT 2025 to 30 OCT 2025

EC-2, 02 OCT 2025 to 30 OCT 2025



One Minute Holding Pattern	KABDE FWA 12 RADAR	WAINE FWA 5.9 RADAR	3000	FWA R-134	OSBER
10000	325°	145°	2400	3.05° TCH 53	0.9
3000	6.1 NM	3.4 NM	0.5		
CATEGORY	A	B	C	D	E
S-14	1280-1	478 (500-1)	1280-1 <sup>3</sup> / <sub>8</sub> 478 (500-1 <sup>3</sup> / <sub>8</sub> )	1280-1 <sup>1</sup> / <sub>2</sub> 478 (500-1 <sup>1</sup> / <sub>2</sub> )	1280-1 <sup>3</sup> / <sub>4</sub> 478 (500-1 <sup>3</sup> / <sub>4</sub> )
CIRCLING	1300-1	485 (500-1)	1360-1 <sup>1</sup> / <sub>2</sub> 545 (600-1 <sup>1</sup> / <sub>2</sub> )	1520-2 <sup>1</sup> / <sub>4</sub> 705 (800-2 <sup>1</sup> / <sub>4</sub> )	1520-2 <sup>1</sup> / <sub>2</sub> 705 (800-2 <sup>1</sup> / <sub>2</sub> )