

WAAS CH 78122 W18A	APP CRS 183°	Rwy Ldg TDZE Apt Elev	3001 228 228
--	------------------------	-----------------------------	---

RNAV (GPS) RWY 18

FRANKLIN COUNTY STATE (F'SO)

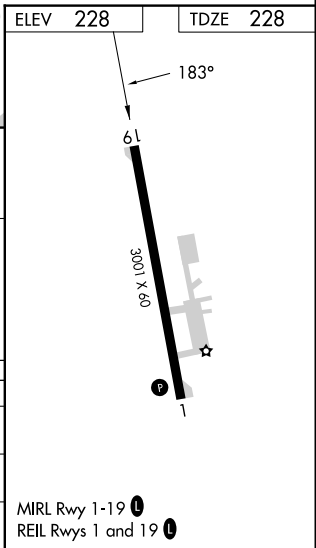
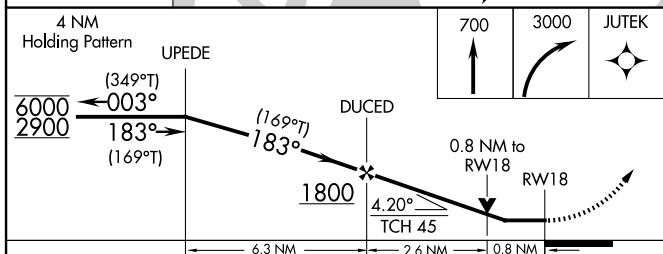
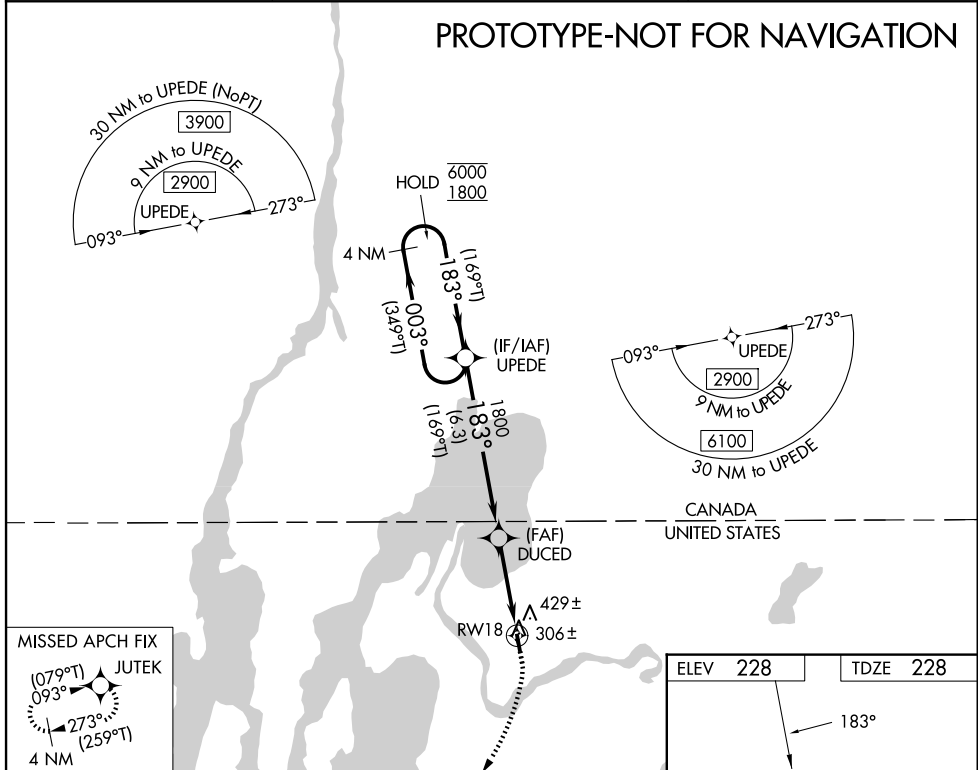
RNP APCH - GPS.

▼ Rwy 18 helicopter visibility reduction below $\frac{3}{4}$ SM NA. Circling Rwy 36 NA at night.
▲ When local altimeter setting not received, use PGB altimeter setting and increase all MDAs 80 feet and Circling visibility Cat B $\frac{1}{4}$ SM. VDP NA when using PGB altimeter setting.

MISSED APPROACH: Climb to 700 then climbing right turn to 3000 direct JUTEK and hold.

AWOS-3 119.025	BURINGTON APP CON* (E) 121.1 (W) 360.8	UNICOM 122.8 (CTAF) 0
--------------------------	--	---------------------------------

PROTOTYPE-NOT FOR NAVIGATION



CATEGORY	A	B	C	D
LP MDA	640-1	412 (500-1)		NA
LNAV MDA	680-1	452 (500-1)		NA
CIRCLING	780-1 552 (600-1)	960-1 732 (800-1)		NA