

Flight Procedures Cover Page	Task Action: FLIGHT CHECK	Task Type: IAP	Estimated Chart Date: 05/14/2026	APWS Task ID: AA081FCBBE9D4353862BB937E4C86958	APWS Project ID: 6C7F3FFD5ED140479DCB18269B5434D4
Procedure: ILS OR LOC RWY 14 AMDT 1		Enroute: NO	Specialist: Dunn, Timothy		Agreement Number:
Airport ID: KSGF			Airport City: SPRINGFIELD		State: MO
Facility ID: GWA	Facility Type: ILS	Flight Inspection Remark Type: New FC Slot			

Procedure Comments:  
Contact Robert Hamilton 405-954-4608.

8260-2 BVRLY  
03/26/2026: THIS IS A CORRECTED COPY OF THE FORM APPROVED ON 03/09/2026.  
FIX USE: ADDED KSGF RNAV (GPS) RWY 32.

QUALITY  
9  
CHECKED  
BEGUE

QUALITY  
10  
CHECKED




LOC/DME I-GWA <b>109.7</b> Chan <b>34</b>	APP CRS <b>139°</b>	Rwy Ldg TDZE Apt Elev <b>8000</b> <b>1260</b> <b>1268</b>
---	------------------------	--

# ILS or LOC RWY 14

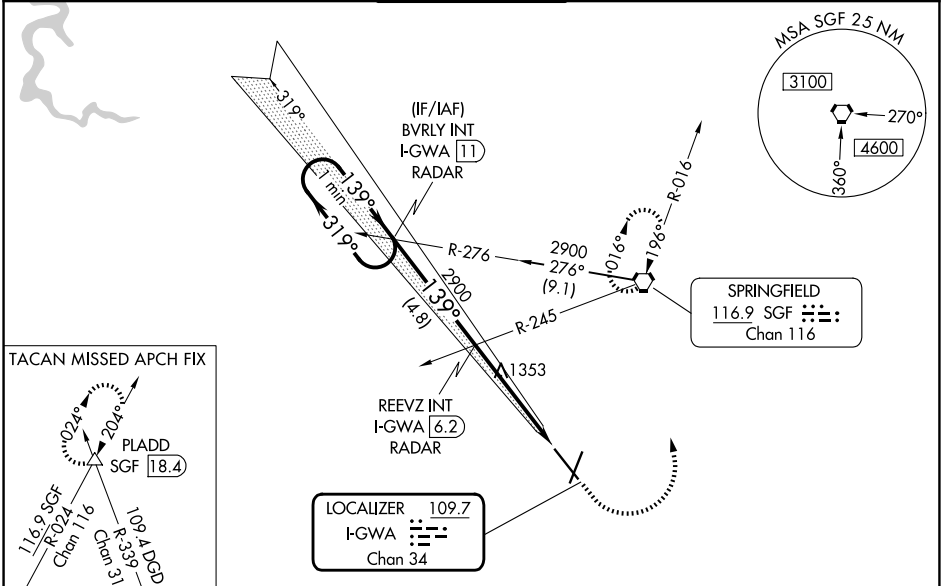
SPRINGFIELD-BRANSON NTL (SGF)

**⚠** Helicopter visibility reduction below  $\frac{3}{4}$  SM NA. Inoperative table does not apply to S-ILS 14. For inoperative MALS/R, increase S-LOC 14 all Cats visibility to 1.

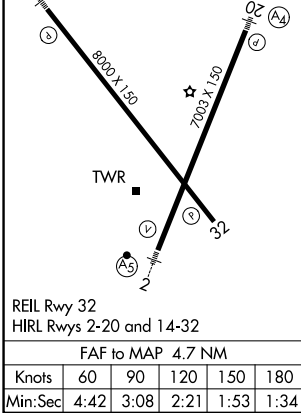
MALS/R 

MISSED APPROACH: Climb to 1800 then climbing left turn to 2900 to SGF VORTAC and hold. (TACAN aircraft continue on SGF VORTAC R-024 to PLADD INT and hold NE, RT, 204° inbound).

ATIS <b>135.125</b>	SPRINGFIELD APP CON <b>124.95 290.5</b>	SPRINGFIELD TOWER <b>119.9 257.8</b>	GND CON <b>121.9 251.15</b>	CLNC DEL <b>123.675</b>
------------------------	--	---	--------------------------------	----------------------------



ELEV 1268	<b>D</b>	TDZE 1260
-----------	----------	-----------



One Minute Holding Pattern	BVRVLY INT I-GWA [11] RADAR	REEVZ INT I-GWA [6.2] RADAR	1800	2900	SGF
2900 ← 319° → 139° → 2900		2900	*I-GWA [2.4] I-GWA [1.5]	*LOC only	
GS 3.00° TCH 56		2900			
	4.8 NM	3.8 NM	1 NM		
CATEGORY	A	B	C	D	
S-ILS 14		1517- $\frac{3}{4}$	257 (300- $\frac{3}{4}$ )		
S-LOC 14		1620- $\frac{3}{4}$	360 (400- $\frac{3}{4}$ )		
CIRCLING	1760-1 492 (500-1)	1820-1 552 (600-1)	1820-1 $\frac{1}{2}$ 552 (600- $\frac{1}{2}$ )	1920-2 652 (700-2)	

NC-3, 02 OCT 2025 to 30 OCT 2025

NC-3, 02 OCT 2025 to 30 OCT 2025