

|  |                         |                                |                                     |   |  |
|--|-------------------------|--------------------------------|-------------------------------------|---|--|
| Flight Procedures Cover Page           | Task Action:<br>P-NOTAM | Task Type:<br>IAP              | Estimated Chart Date:<br>05/16/2024 | APWS Task ID:<br>AA875B3B4788465A80B18BB2D0BEA6F3 | APWS Project ID:<br>09C2E65F33F649D3BF6D393296936F03 |
| Procedure:<br>RNAV (GPS) RWY 1 AMDT 0A |                         | Enroute:<br>NO                 | Specialist:<br>Johnson, Timothy     |   | Agreement Number:                                    |
| Airport ID:<br>KASJ                    |                         |                                | Airport City:<br>AHOSKIE            |   | State:<br>NC   |
| Facility ID:                           | Facility Type:          | Flight Inspection Remark Type: |                                     |   |  |

Procedure Comments:  
P-NOTAM.

PENDING DATA USED.

Processed IAW Technical Support Group (AJF-17) Memo dated 07/07/2021, Guidance for Procedural Changes Requiring Flight Inspection/Validation.

CONTACT: DAVID DANNER (405)-954-5077.

02/16/2024

QUALITY  
38  
CHECKED

QUALITY  
14  
CHECKED

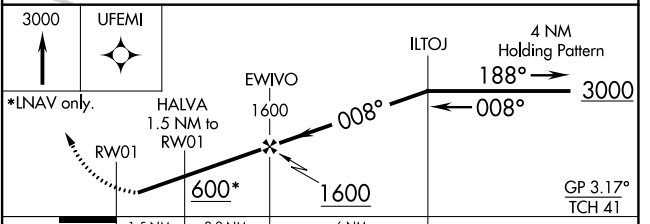
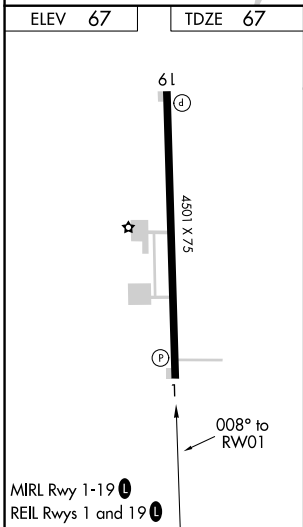
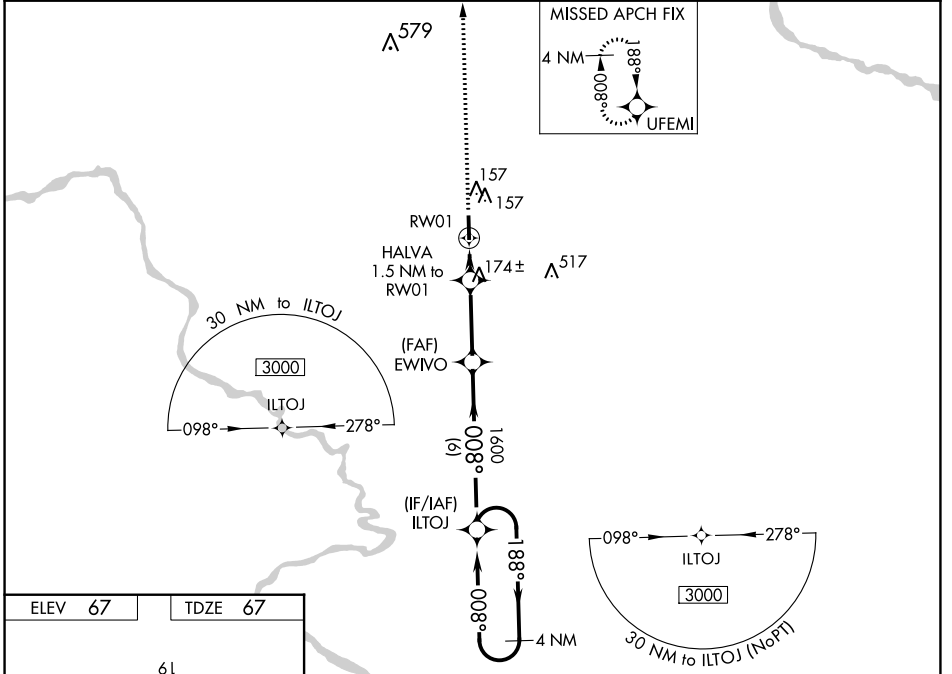
|  |                        |   |
|--|------------------------|---|
| WAAS<br>CH <b>70637</b><br><b>W01A</b> | APP CRS<br><b>008°</b> | Rwy Idg <b>4501</b><br>TDZE <b>67</b><br>Apt Elev <b>67</b> |
|--|------------------------|---|

**RNAV (GPS) RWY 1**  
TRI-COUNTY AT HENRY JOYNER FLD (A.SJ)

**⚠** DME/DME RNP-0.3 NA. Night Landing: Rwy 1 NA. When local altimeter setting not received, use Franklin altimeter setting and increase all DA 67 feet and all MDA 80 feet; increase LPV all Cats visibility 1/8 mile, LNAV Cats C/D visibility 3/8 mile and Circling Cat D visibility 1/4 mile. Baro-VNAV NA when using Franklin altimeter setting. For uncompensated Baro-VNAV systems, LNAV/VNAV NA below -15°C (5°F) or above 54°C (130°F). Helicopter visibility reduction below 1 SM NA.

MISSED APPROACH: Climb to 3000 direct UFEMI and hold, continue climb-in-hold to 3000.

|                          |   |                               |
|--------------------------|---|-------------------------------|
| AWOS-3<br><b>119.075</b> | WASHINGTON CENTER<br><b>123.85 279.65</b> | UNICOM<br><b>122.8 (CTAF)</b> |
|--------------------------|---|-------------------------------|



| CATEGORY          | A     | B           | C                      | D                      |
|-------------------|-------|-------------|------------------------|------------------------|
| LPV DA            | 359-1 | 292 (300-1) |                        | NA                     |
| LNAV/VNAV DA      | 322-1 | 255 (300-1) |                        | NA                     |
| LNAV MDA          | 440-1 |             | 373 (400-1)            |                        |
| <b>C</b> CIRCLING | 580-1 | 513 (600-1) | 580-1½<br>513 (600-1½) | 820-2½<br>753 (800-2½) |

SE-2, 02 NOV 2023 to 30 NOV 2023

SE-2, 02 NOV 2023 to 30 NOV 2023