

FEDERAL AVIATION ADMINISTRATION  
 FLIGHT STANDARDS SERVICE  
 STANDARD TERMINAL ARRIVAL (STAR)

Bearings, headings, courses, tracks and radials are magnetic. Elevations and altitudes are in feet, MSL. Altitudes are minimum altitudes unless otherwise indicated.  
 Ceilings are in feet above airport elevation. Distances are in nautical miles. Visibilities are in statute miles or feet RVR unless otherwise indicated.

Arrival Name <b>MARQO (RNAV)</b>	Number <b>THREE</b>	STAR Computer Code <b>MARQO.MARQO3</b>	Superseded Number <b>TWO</b>	Dated <b>08/17/2017</b>	Effective Date
-------------------------------------	------------------------	-------------------------------------------	---------------------------------	----------------------------	----------------

TRANSITION ROUTES:

Transition Name	Transition Computer Codes	From FIX/NAVAID	To FIX/NAVAID	Course	Distance	MEA	MOCA	MAA	Crossing Altitudes / Fixes
ZOOSS	ZOOSS.MARQO3	ZOOSS	ZOOSS						AT FL240
			WALOP	097.90	21.19	15000	2500		
			CAMJO	098.07	21.88	10000	2500		
			MARQO	093.14	07.28	8000	2500		

ARRIVAL ROUTE DESCRIPTION:

LANDING ALL AIRPORTS: FROM MARQO ON TRACK 093.21/10.00 TO CROSS COROE AT OR BELOW 11000, THEN ON TRACK 090.23/25.15 TO GWIIZ, THEN ON TRACK 090.48/9.00 TO CROSS EGAGE AT 4000 AND AT 210 KIAS, THEN ON TRACK 077.48. EXPECT RADAR VECTORS TO FINAL APPROACH COURSE.

PBN REQUIREMENT NOTES:

RNAV 1 - DME/DME/IRU OR GPS

EQUIPMENT REQUIREMENT NOTES:

RADAR REQUIRED

PROCEDURAL DATA NOTES:

NOTE: JET AND TURBOPROP AIRCRAFT ONLY

FIXES AND/OR HOLDING PATTERNS:

CHART HOLDING AT CAMJO: HOLD W, RT, 098.07 INBOUND, 10 NM LEGS.

COMMUNICATIONS:

AIRPORTS SERVED:

AIRPORT ID	CITY	STATE
CRG	JACKSONVILLE	FL
FHB	FERNANDINA BEACH	FL
JAX	JACKSONVILLE	FL
NRB	MAYPORT	FL

LOST COMMUNICATIONS PREFERENCES:

REMARKS:

MEA ALTITUDES DUE TO DME/DME REQUIREMENTS.

THE ENVIRONMENTAL REVIEW UNDER ORDER 1050.1 (LATEST EDITION) AND THE NOISE SCREENING HAVE BEEN ACCOMPLISHED.



FEDERAL AVIATION ADMINISTRATION  
 FLIGHT STANDARDS SERVICE  
 STANDARD TERMINAL ARRIVAL (STAR)

Bearings, headings, courses, tracks and radials are magnetic. Elevations and altitudes are in feet, MSL. Altitudes are minimum altitudes unless otherwise indicated. Ceilings are in feet above airport elevation. Distances are in nautical miles. Visibilities are in statute miles or feet RVR unless otherwise indicated.

Arrival Name	Number	STAR Computer Code	Superseded Number	Dated	Effective Date
<b>MARQO (RNAV)</b>	<b>THREE</b>	<b>MARQO.MARQO3</b>	<b>TWO</b>	<b>08/17/2017</b>	

**ADDITIONAL FLIGHT DATA:**

DME/DME ASSESSMENT: SAT (RNP 2.0)  
 MAG VAR: JAX 06W/2010  
 CHART AT EGAGE TERMINUS: LDG CRG, FHB, JAX, NRB

**FLIGHT INSPECTED BY:**

JAMES R JONES

**ORGANIZATION:**

AJF

**DATE:**

01/27/2025

Flight Inspected Signature:

*Digitally signed by*

**ROBERT G HAMILTON**

Jan 31, 2025

**DEVELOPED BY:**

PARNELL PRASSADA

AJV-A431

5/26/2024

Developed By Signature:

*Digitally signed by*

**PARNELL R PRASSADA**

Aug 19, 2024

**APPROVED BY:**

BEV BORDY

AJV-A430

Approved By Signature:

*Digitally signed by*

**ROBERT G HAMILTON**

Jan 31, 2025

**CHANGES:**

1. REMOVED CAPPs WAYPOINT TO ZOOSS TRANSITION.
2. UPDATED ALTITUDE CONSTRAINT AT ZOOSS FROM "BETWEEN FL240 AND FL260" TO "AT FL240" ON ENROUTE TRANSITIONS.
3. DELETED ALTITUDE CONSTRAINTS AT CAMJO, GWIIZ, AND WALOP.
4. CREATED NEW COMMON ROUTE BEGINNING AT MARQO TO COROE TO GWIIZ TO EGAGE.
5. AMENDED ALTITUDE CONSTRAINT AT COROE FROM "12000B9000" TO "AT/BELOW 11000" AND DELETED SPEED CONSTRAINT.
6. ADDED MOCA TO TRANSITION ROUTES.
7. REMOVED ALL RUNWAY TRANSITIONS AND THE FOLLOWING ASSOCIATED WAYPOINTS FROM PROCEDURE: NOMTE, OLEKE, PEPIE, HIITS, NATII, TASCH, ACENE, CALIM, CAPPs, DIPDE, GUTTY.
8. REMOVED MEA VALUES FROM ARRIVAL DESCRIPTION
9. COMBINED AND RELOCATED "RNAV 1 – DME/DME/IRU OR GPS REQUIRED" FROM PROCEDURAL DATA NOTES TO PBN REQUIREMENT NOTES.
10. RELOCATED "RADAR REQUIRED" FROM PROCEDURAL DATA NOTES TO EQUIPMENT REQUIREMENT NOTES.
11. CHANGED "TURBOJET" TO "JET" IN PROCEDURAL DATA NOTES.
12. ADDED "TURBOPROP" TO PROCEDURAL DATA NOTES.
13. DELETED "CHART: CROSS WALOP AT 280 KIAs" FROM PROCEDURAL DATA NOTE.
14. DELETED ALL ENTRIES FROM COMMUNICATIONS.
15. REMOVED AIRPORT NAME AND ADDED CRG, FHB, JAX, NRB TO AIRPORTS SERVED
16. ADDED "MEA ALTITUDES DUE TO DME/DME REQUIREMENTS" AND "THE ENVIRONMENTAL REVIEW UNDER ORDER 1050.1 (LATEST EDITION) AND THE NOISE SCREENING HAVE BEEN ACCOMPLISHED" TO REMARKS.
17. CHANGED "REFERENCE MAGVAR = KJAX 06W/2010" TO "MAG VAR: JAX 06W/2010."
18. ADDED "CHART AT EGAGE TERMINUS: LDG CRG, FHB, NRB" TO ADDITIONAL FLIGHT DATA.

**REASONS:**

- 1-5, 7, 13. PER ATC REQUEST DUE OPERATIONAL NECESSITY.
6. IAW 8260.19J, 4-5-12 (B) (8).



FEDERAL AVIATION ADMINISTRATION  
 FLIGHT STANDARDS SERVICE  
 STANDARD TERMINAL ARRIVAL (STAR)

Bearings, headings, courses, tracks and radials are magnetic. Elevations and altitudes are in feet, MSL. Altitudes are minimum altitudes unless otherwise indicated.  
 Ceilings are in feet above airport elevation. Distances are in nautical miles. Visibilities are in statute miles or feet RVR unless otherwise indicated.

Arrival Name	Number	STAR Computer Code	Superseded Number	Dated	Effective Date
<b>MARQO (RNAV)</b>	<b>THREE</b>	<b>MARQO.MARQO3</b>	<b>TWO</b>	<b>08/17/2017</b>	

8. NOT REQUIRED PER CURRENT DOCUMENTATION STANDARDS.

9-10. IAW 8260.19J, 4-5-12, (D) (1 & 2).

11-12. IAW 8260.19J, 4-5-12 (D) (3).

14. IAW 8260.19J, 4-5-12 (F).

15. IAW 8260.19J, 4-5-12 (G).

16. IAW 8260.19J, 4-5-12 (I).

17. IAW 8260.19J, 4-5-12 (J) (2).

18. IAW 8260.19J, 4-5-12 (J) (5).

01/31/25: THIS IS AN UPDATED COPY OF THE FORM DEVELOPED ON 05/26/2024.

1. RAISED MOCA FROM 1600 TO 2500 AT WALOP AND CAMJO.

2. RAISED MOCA FROM 1500 TO 2500 AT MARQO.

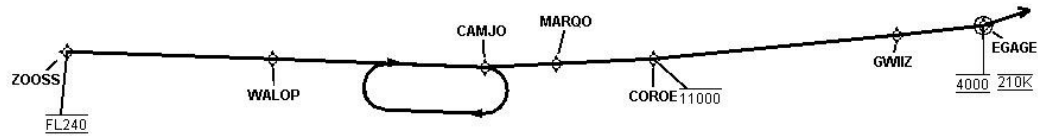


FEDERAL AVIATION ADMINISTRATION  
 FLIGHT STANDARDS SERVICE  
 STANDARD TERMINAL ARRIVAL (STAR)

Bearings, headings, courses, tracks and radials are magnetic. Elevations and altitudes are in feet, MSL. Altitudes are minimum altitudes unless otherwise indicated.  
 Ceilings are in feet above airport elevation. Distances are in nautical miles. Visibilities are in statute miles or feet RVR unless otherwise indicated.

Arrival Name	Number	STAR Computer Code	Superseded Number	Dated	Effective Date
MARQO (RNAV)	THREE	MARQO.MARQO3	TWO	08/17/2017	

Graphic Depiction 1



FEDERAL AVIATION ADMINISTRATION  
 FLIGHT STANDARDS SERVICE  
 STAR (DATA RECORD)

Arrival Name	Number	STAR Computer Code	Superseded Number	Dated	Effective Date				
MARQO (RNAV)	THREE	MARQO.MARQO3	TWO	08/17/2017					
<u>FIX/NAVAID</u>	<u>LAT/LONG</u>	<u>C</u>	<u>FO/FB</u>	<u>LEG TYPE</u>	<u>TC</u>	<u>DIST (NM)</u>	<u>ALTITUDE</u>	<u>SPEED</u>	<u>REMARKS</u>
En Route Transition									
ZOOSS	303206.64N / 0833101.38W	Y		IF			AT FL240		ZOOSS.MARQO3
WALOP	303122.00N / 0830630.00W	Y	FB	TF	091.90	21.19			
CAMJO	303032.00N / 0824111.00W	Y	FB	TF	092.07	21.88			
MARQO	303053.57N / 0823245.62W	Y	FB	TF	087.14	07.28			
Common Route									
MARQO	303053.57N / 0823245.62W	Y		IF					MARQO.MARQO3
COROE	303122.29N / 0822111.77W	Y	FB	TF	087.21	10.00	AT/BELOW 11000		
GWIIZ	303351.10N / 0815212.70W	Y	FB	TF	084.23	25.15			
EGAGE	303442.78N / 0814150.04W	Y	FO	TF	084.48	09.00	AT 4000	AT 210K	
KCRG,KFHB,KJAX, KNRB				FM	071.48				

