

DME DME Assessment Results for MARQO3 path ZOOSS_EGAGE

Results Summary	
Flyability:	Completed
DME/DME:	Completed - No Critical DMEs
Name:	Erik J-CTR John
Project File:	C:\Users\Erik J-CTR John\OneDrive - Federal Aviation Administration\Desktop\PROJECT FILES\KJAX STARS\KJAX MARQO (RNAV) STAR\KJAX MARQO3 (RNAV) STAR DME 06 FEB 2024.tgs
Output File:	C:\Users\Erik J-CTR John\OneDrive - Federal Aviation Administration\Desktop\PROJECT FILES\KJAX STARS\KJAX MARQO (RNAV) STAR\SUBMITTAL\DME\KJAX [IFPA] MARQO3 20240206_0920 EST\ZOOSS_EGAGE\KJAX MARQO3 RNAV STAR ZOOSS EGAGE 20240206_0920 EST.pdf
Procedure Name:	MARQO3
Software: DmeDmePlugin:	7.2.1
Date/Time:	02/06/2024 09:20 EST
Databases:	MITRE 3DEP 3 arcsec

Failures
No Failures

Warnings
No Warnings

Informational
No Informational

Notes For Flight Check
None

Flight Plan							
Name	Type	Lat/Lon	Altitude (ft)	VNAV Mode	Ground Speed (kts)	Turn Type	Leg Type
ZOOSS	WP	N30° 32' 06.64", W083° 31' 01.38"	15000	VNAV	210	FLY_BY	TF
WALOP	WP	N30° 31' 22.00", W083° 06' 30.00"	15000	VNAV	210	FLY_BY	TF
CAMJO	WP	N30° 30' 32.00", W082° 41' 11.00"	10000	VNAV	210	FLY_BY	TF
MARQO	WP	N30° 30' 53.57", W082° 32' 45.62"	8000	VNAV	210	FLY_BY	TF
COROE	WP	N30° 31' 22.29", W082° 21' 11.77"	8000	VNAV	210	FLY_BY	TF
GWIIZ	WP	N30° 33' 51.10", W081° 52' 12.70"	6000	VNAV	210	FLY_BY	TF
EGAGE	WP	N30° 34' 42.78", W081° 41' 50.04"	4000	VNAV	210	FLY_OVER	TF

Flyability	
Flight Type:	RNAV_STAR
Selected Airport:	KJAX [IFPA]
Climb Gradient:	None assigned
Speeds:	200 Ground Speed to 11000 FT
	240 Ground Speed to 18000 FT
	260 Ground Speed to 24000 FT
	340 Ground Speed above 24000 FT
Descent During a Turn:	Allowed
VNAV Mode:	Flight Plan

DME DME Assessment Results for MARQO3 path ZOOSS_EGAGE

DME/DME	
RNP:	RNP 2
Flight Mode:	Manual
Line of Sight (DTED Level 0 Max):	Evaluated
Inertial Drift:	Enabled
Initial Drift:	0.558 NM
INS Drift Rate:	8.0 NM/Hour
Range Mode:	OSV
RNP Edges:	Evaluated
Min DME Range:	3.0 NM
DME Types:	DME, VOR-DME, VORTAC, TACAN
DME Include Angles:	30 to 150
Critical DMEs:	Not Allowed
DoD Facilities:	Not included
Foreign Facilities:	Not included
High DMEs:	Included
Low DMEs:	Included
Terminal DMEs:	Included
Flight Check DMEs:	Not selected
Higher Altitudes:	Not Evaluated
Near Maximum Altitude:	Not Evaluated
Automatic ESVs:	Not enabled
Disabled DMEs:	None

DME/DME (Continued)										
DMEs Used										
#	Name	Lat/Lon	MAGVAR	Range	Type	Source	Critical	Status	Time	Distance
1	TAY	N30° 30' 16.70", W082° 33' 10.45"	3.0 W	130	H	IFPA	NO	Enabled	88.7 %	88.7 %
2	SSI	N31° 03' 01.85", W081° 26' 45.47"	4.0 W	40	L	IFPA	NO	Enabled	10.3 %	10.3 %
3	CRG	N30° 20' 19.97", W081° 30' 35.74"	3.0 W	130	H	IFPA	NO	Enabled	43.2 %	43.2 %
4	OTK	N30° 46' 49.60", W083° 16' 47.02"	2.0 W	130	H	IFPA	NO	Enabled	74.5 %	74.5 %
5	PZD	N31° 39' 18.74", W084° 17' 35.16"	2.0 W	130	DH	IFPA	NO	Enabled	45.8 %	45.8 %
6	MGR	N31° 04' 56.17", W083° 48' 15.18"	-0.0 E	40	L	IFPA	NO	Enabled	0.9 %	0.9 %
7	GEF	N30° 33' 04.83", W083° 46' 59.28"	1.0 E	40	L	IFPA	NO	Enabled	27.5 %	27.5 %
8	GNV	N29° 41' 31.61", W082° 16' 22.70"	4.0 W	40	L	IFPA	NO	Enabled	47.4 %	47.4 %
9	CTY	N29° 35' 56.40", W083° 02' 55.65"	2.0 W	40	L	IFPA	NO	Enabled	26.9 %	26.9 %
10	AMG	N31° 32' 11.60", W082° 30' 29.12"	0.0 E	130	H	IFPA	NO	Enabled	23 %	23 %
11	AYS	N31° 16' 09.93", W082° 33' 23.20"	0.0 E	40	L	IFPA	NO	Enabled	69.6 %	69.6 %
12	SZW	N30° 33' 22.42", W084° 22' 26.19"	2.0 E	130	H	IFPA	NO	Enabled	23 %	23 %

DME DME Assessment Results for MARQO3 path ZOOSS_EGAGE

Flight Check DME Selection						
Distance [NM]	Selected DMEs					Alternate
0.0	MGR	SZW	OTK	TAY	PZD	GEF
0.9	OTK	PZD	AMG	GEF	TAY	SZW
21.8	TAY	OTK	GEF	CRG	PZD	
22.1	TAY	OTK	GEF	PZD		
26.1	AYS	OTK	TAY	PZD		
30.4	CTY	TAY	AYS	OTK	PZD	
43.4	AYS	TAY	CTY	OTK	GNV	
47.0	OTK	CTY	AYS	GNV		
53.0	GNV	TAY	OTK	CTY	AYS	
55.8	AYS	TAY	GNV	OTK		
67.7	GNV	TAY	OTK	CRG	AYS	
70.5	GNV	TAY	CRG	AYS		
81.7	AYS	TAY				
84.8	SSI	CRG	AYS	TAY		
87.3	SSI	CRG	TAY			
89.9	SSI	CRG	AYS			

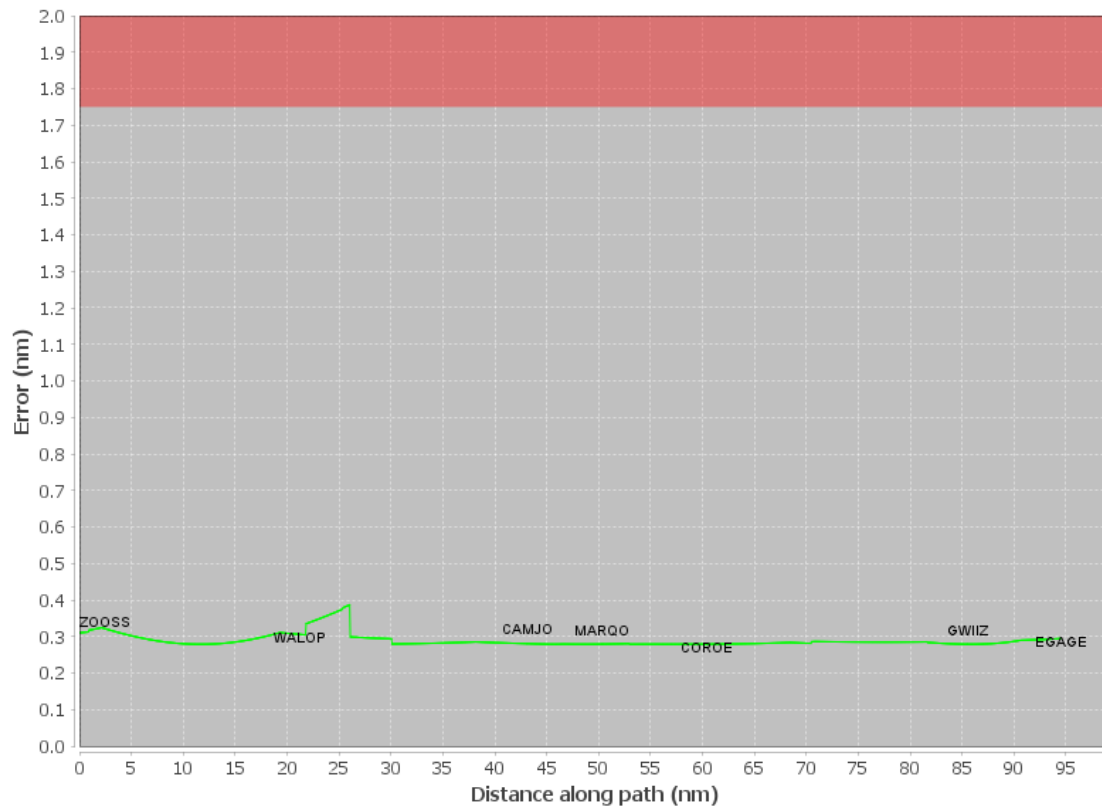
Inertial Drift Segments			
#	Start Location	End Location	Length [NM]

Available DMEs by Waypoints			
Waypoint Before	Waypoint After	DME List	Suggested DMEs
ZOOSS	WALOP	SZW, OTK, MGR, GEF, CRG, AMG, PZD, TAY	
WALOP	CAMJO	SZW, OTK, GEF, CRG, CTY, AMG, PZD, AYS, TAY, GNV	
CAMJO	MARQO	OTK, CTY, AYS, PZD, TAY, GNV	
MARQO	COROE	OTK, CTY, AYS, TAY, GNV	
COROE	GWIIZ	OTK, SSI, CRG, AYS, TAY, GNV	
GWIIZ	EGAGE	SSI, CRG, AYS, TAY	

User Data Files								
#	File Name							
	None							
User DMEs								
#	Name	Lat/Lon	MAGVAR	Range	Elevation [ft]	Frequency	Replaces	Status
1	GNV FAA 704230-38 GNV [IFPA]	N29° 41' 31.61", W082° 16' 22.70"	4.0 W	40	127.5	116.2	GNV FAA 704230-38	
	ESV:	Bearing [True]: 325.0° to 20.0° Bearing [Mag]: 329.0° to 24.0°				Arc Distance: Out to 60.0 NM Altitude: 4000.0 to 14500.0 ft		
2	OTK FAA 872007-10 OTK [IFPA]	N30° 46' 49.60", W083° 16' 47.02"	2.0 W	130	199.4	114.8	OTK FAA 872007-10	
	ESV:	Bearing [True]: 100.0° to 125.0° Bearing [Mag]: 102.0° to 127.0°				Arc Distance: Out to 71.0 NM Altitude: 5000.0 to 16000.0 ft		
3	AYS FAA 698108-2 AYS [IFPA]	N31° 16' 09.93", W082° 33' 23.20"	0.0 E	40	154.8	110.2	AYS FAA 698108-2	
	ESV:	Bearing [True]: 80.0° to 232.0° Bearing [Mag]: 80.0° to 232.0°				Arc Distance: Out to 66.0 NM Altitude: 4000.0 to 19000.0 ft		
4	CTY FAA 704013-58 CTY [IFPA]	N29° 35' 56.40", W083° 02' 55.65"	2.0 W	40	33.8	112.0	CTY FAA 704013-58	
	ESV:	Bearing [True]: 6.0° to 47.0° Bearing [Mag]: 8.0° to 49.0°				Arc Distance: Out to 67.0 NM Altitude: 4900.0 to 18100.0 ft		

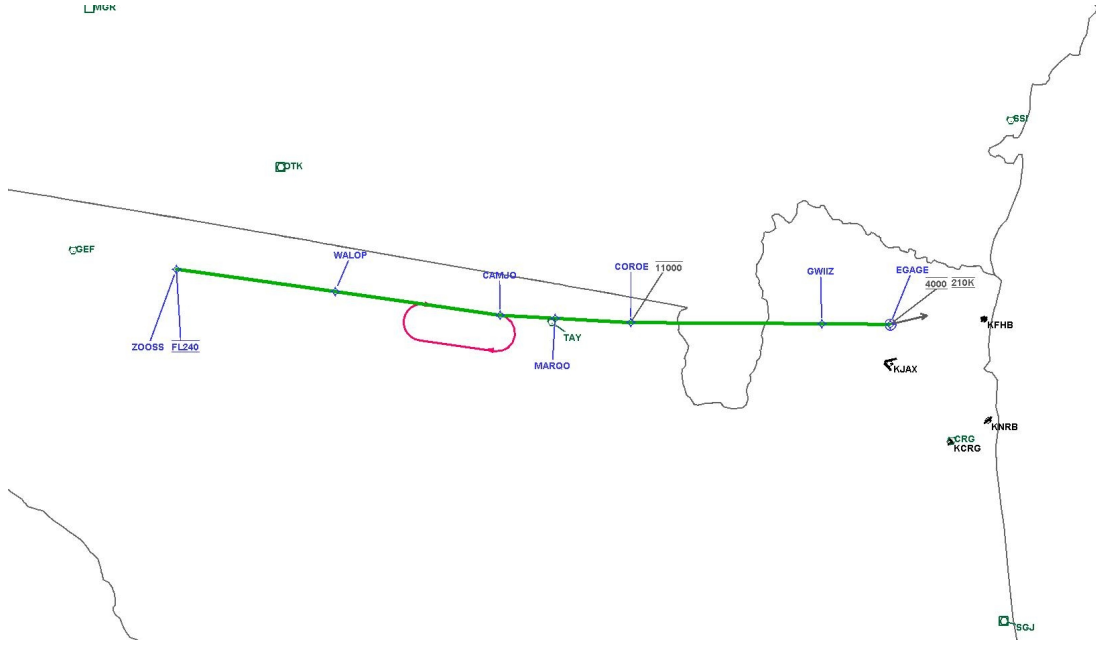
DME DME Assessment Results for MARQO3 path ZOOSS_EGAGE

DME Error



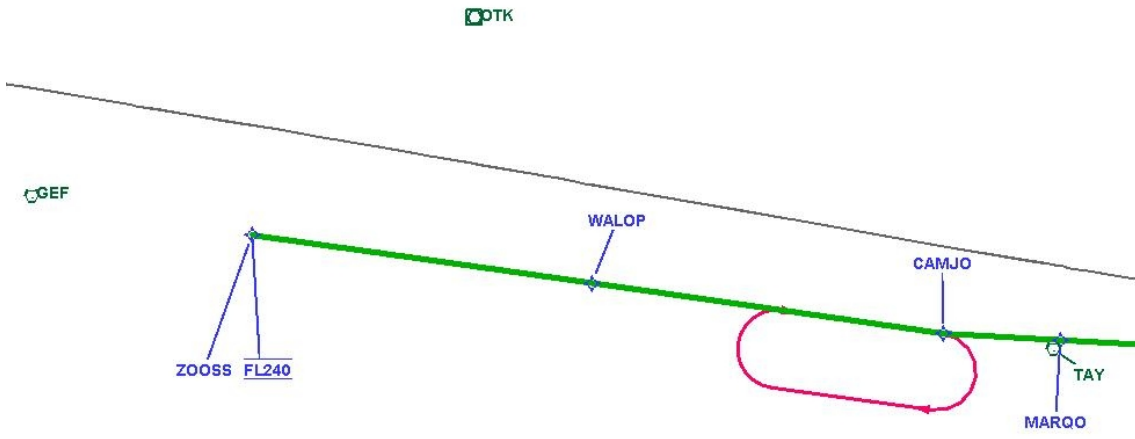
DME DME Assessment Results for MARQO3 path ZOOSS_EGAGE

Graphic Depiction 1



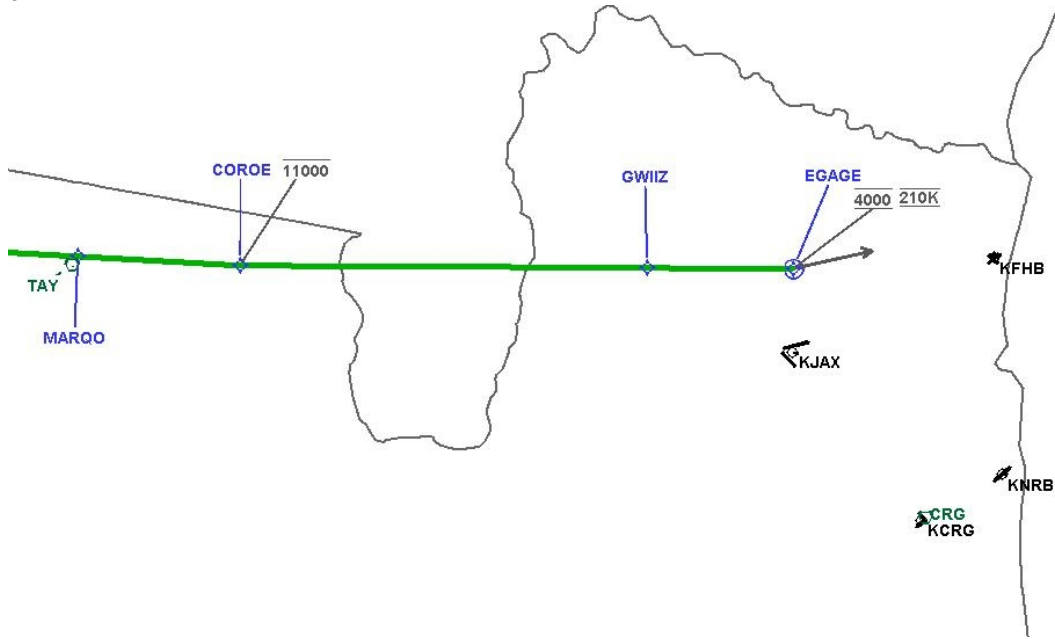
DME DME Assessment Results for MARQO3 path ZOOSS_EGAGE

Graphic Depiction 2



DME DME Assessment Results for MARQO3 path ZOOSS_EGAGE

Graphic Depiction 3



DME DME Assessment Results for MARQO3 path WALOP_ZOOSS

Results Summary

Flyability:	Completed
DME/DME:	Completed - No Critical DMEs
Name:	Erik J-CTR John
Project File:	C:\Users\Erik J-CTR John\OneDrive - Federal Aviation Administration\Desktop\PROJECT FILES\KJAX STARS\KJAX MARQO (RNAV) STAR\KJAX MARQO3 (RNAV) STAR DME 06 FEB 2024.tgs
Output File:	C:\Users\Erik J-CTR John\OneDrive - Federal Aviation Administration\Desktop\PROJECT FILES\KJAX STARS\KJAX MARQO (RNAV) STAR\SUBMITTAL\DME\KJAX [IFPA] MARQO3 20240206_0920 EST\WALOP_ZOOSS\KJAX MARQO3 RNAV STAR WALOP ZOOSS 20240206_0920 EST.pdf
Procedure Name:	MARQO3
Software: DmeDmePlugin:	7.2.1
Date/Time:	02/06/2024 09:20 EST
Databases:	MITRE 3DEP 3 arcsec

Failures

No Failures

Warnings

No Warnings

Informational

No Informational

Notes For Flight Check

None

Flight Plan

Name	Type	Lat/Lon	Altitude (ft)	VNAV Mode	Ground Speed (kts)	Turn Type	Leg Type
WALOP	WP	N30° 31' 22.00", W083° 06' 30.00"	15000	VNAV	210	FLY_BY	TF
ZOOSS	WP	N30° 32' 06.64", W083° 31' 01.38"	15000	VNAV	210	FLY_BY	TF

Flyability

Flight Type:	RNAV_STAR
Selected Airport:	KJAX [IFPA]
Climb Gradient:	None assigned
Speeds:	200 Ground Speed to 11000 FT
	240 Ground Speed to 18000 FT
	260 Ground Speed to 24000 FT
	340 Ground Speed above 24000 FT
Descent During a Turn:	Allowed
VNAV Mode:	Flight Plan

DME DME Assessment Results for MARQO3 path WALOP_ZOOSS

DME/DME	
RNP:	RNP 2
Flight Mode:	Manual
Line of Sight (DTED Level 0 Max):	Evaluated
Inertial Drift:	Enabled
Initial Drift:	0.558 NM
INS Drift Rate:	8.0 NM/Hour
Range Mode:	OSV
RNP Edges:	Evaluated
Min DME Range:	3.0 NM
DME Types:	DME, VOR-DME, VORTAC, TACAN
DME Include Angles:	30 to 150
Critical DMEs:	Not Allowed
DoD Facilities:	Not included
Foreign Facilities:	Not included
High DMEs:	Included
Low DMEs:	Included
Terminal DMEs:	Included
Flight Check DMEs:	Not selected
Higher Altitudes:	Not Evaluated
Near Maximum Altitude:	Not Evaluated
Automatic ESVs:	Not enabled
Disabled DMEs:	None

DME/DME (Continued)										
DMEs Used										
#	Name	Lat/Lon	MAGVAR	Range	Type	Source	Critical	Status	Time	Distance
1	TAY	N30° 30' 16.70", W082° 33' 10.45"	3.0 W	130	H	IFPA	NO	Enabled	100 %	100 %
2	CRG	N30° 20' 19.97", W081° 30' 35.74"	3.0 W	130	H	IFPA	NO	Enabled	76.6 %	76.6 %
3	OTK	N30° 46' 49.60", W083° 16' 47.02"	2.0 W	130	H	IFPA	NO	Enabled	100 %	100 %
4	PZD	N31° 39' 18.74", W084° 17' 35.16"	2.0 W	130	DH	IFPA	NO	Enabled	100 %	100 %
5	GEF	N30° 33' 04.83", W083° 46' 59.28"	1.0 E	40	L	IFPA	NO	Enabled	100 %	100 %
6	MGR	N31° 04' 56.17", W083° 48' 15.18"	-0.0 E	40	L	IFPA	NO	Enabled	4.1 %	4.1 %
7	AMG	N31° 32' 11.60", W082° 30' 29.12"	0.0 E	130	H	IFPA	NO	Enabled	100 %	100 %
8	SZW	N30° 33' 22.42", W084° 22' 26.19"	2.0 E	130	H	IFPA	NO	Enabled	100 %	100 %

Flight Check DME Selection						
Distance [NM]	Selected DMEs					Alternate
0.0	GEF	AMG	TAY	SZW	CRG	OTK
16.3	GEF	OTK	TAY	SZW	AMG	PZD

Inertial Drift Segments			
#	Start Location	End Location	Length [NM]

Available DMEs by Waypoints			
Waypoint Before	Waypoint After	DME List	Suggested DMEs
WALOP	ZOOSS	SZW, OTK, GEF, CRG, MGR, AMG, PZD, TAY	

DME DME Assessment Results for MARQO3 path WALOP_ZOOSS

User Data Files

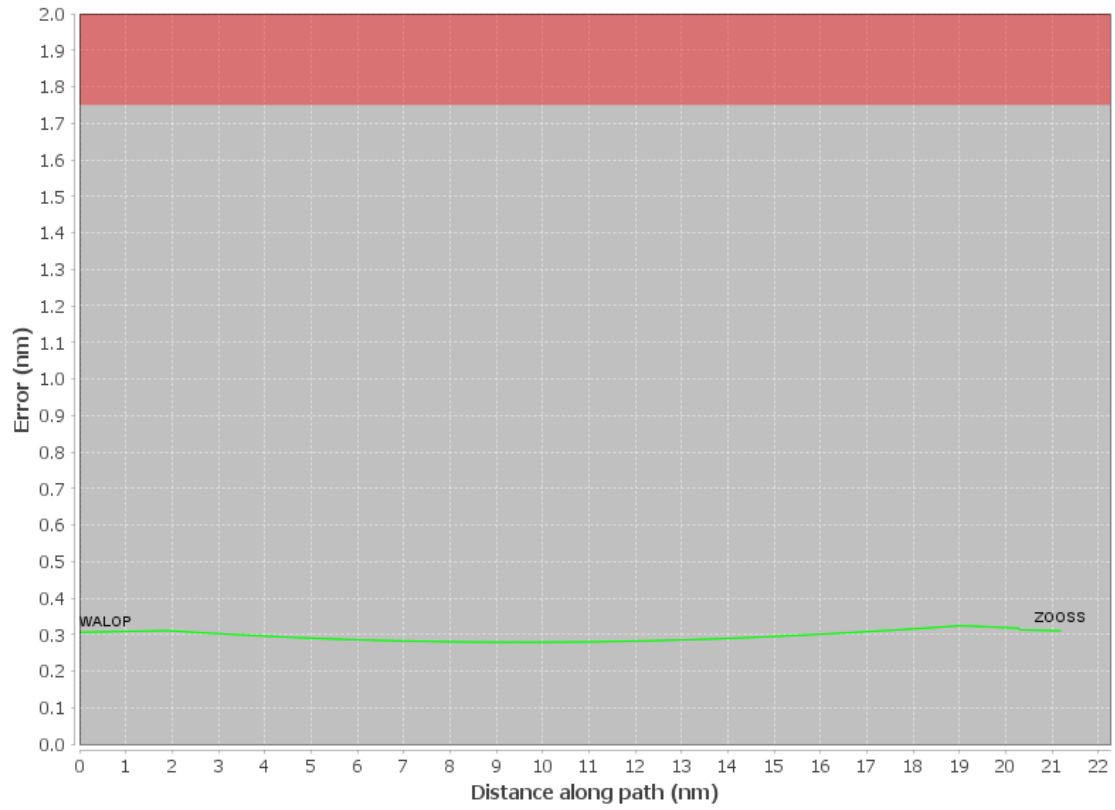
#	File Name
None	

User DMEs

#	Name	Lat/Lon	MAGVAR	Range	Elevation [ft]	Frequency	Replaces	Status
1	GNV FAA 704230-38 GNV [IFPA]	N29° 41' 31.61", W082° 16' 22.70"	4.0 W	40	127.5	116.2	GNV FAA 704230-38	
	ESV:	Bearing [True]: 325.0° to 20.0° Bearing [Mag]: 329.0° to 24.0°				Arc Distance: Out to 60.0 NM Altitude: 4000.0 to 14500.0 ft		
2	OTK FAA 872007-10 OTK [IFPA]	N30° 46' 49.60", W083° 16' 47.02"	2.0 W	130	199.4	114.8	OTK FAA 872007-10	
	ESV:	Bearing [True]: 100.0° to 125.0° Bearing [Mag]: 102.0° to 127.0°				Arc Distance: Out to 71.0 NM Altitude: 5000.0 to 16000.0 ft		
3	AYS FAA 698108-2 AYS [IFPA]	N31° 16' 09.93", W082° 33' 23.20"	0.0 E	40	154.8	110.2	AYS FAA 698108-2	
	ESV:	Bearing [True]: 80.0° to 232.0° Bearing [Mag]: 80.0° to 232.0°				Arc Distance: Out to 66.0 NM Altitude: 4000.0 to 19000.0 ft		
4	CTY FAA 704013-58 CTY [IFPA]	N29° 35' 56.40", W083° 02' 55.65"	2.0 W	40	33.8	112.0	CTY FAA 704013-58	
	ESV:	Bearing [True]: 6.0° to 47.0° Bearing [Mag]: 8.0° to 49.0°				Arc Distance: Out to 67.0 NM Altitude: 4900.0 to 18100.0 ft		

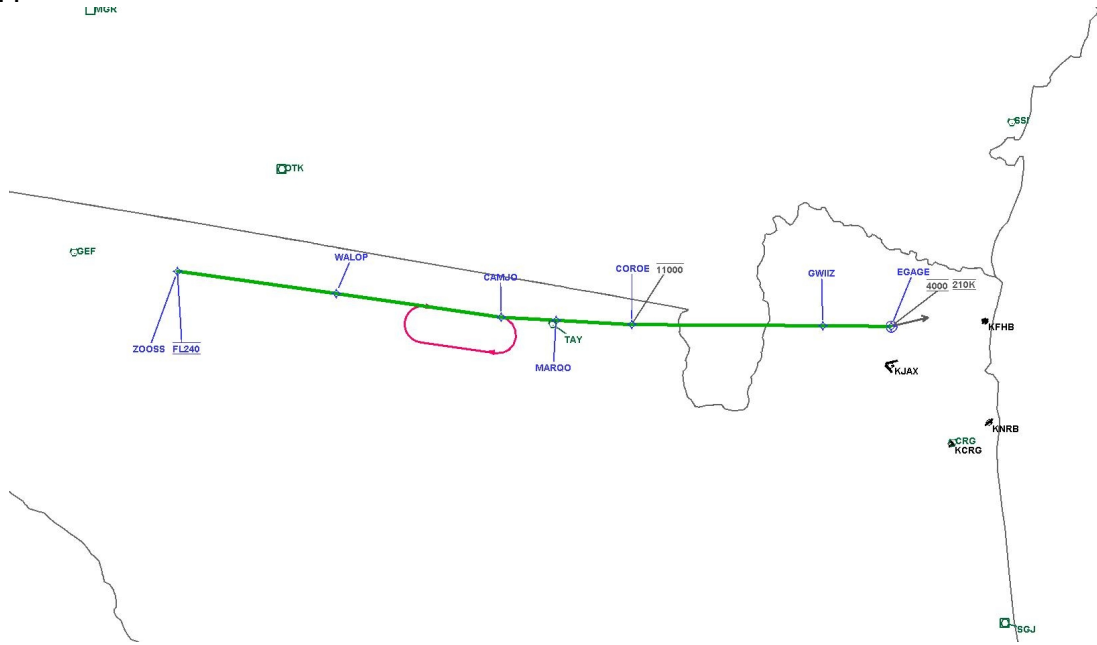
DME DME Assessment Results for MARQO3 path WALOP_ZOOSS

DME Error



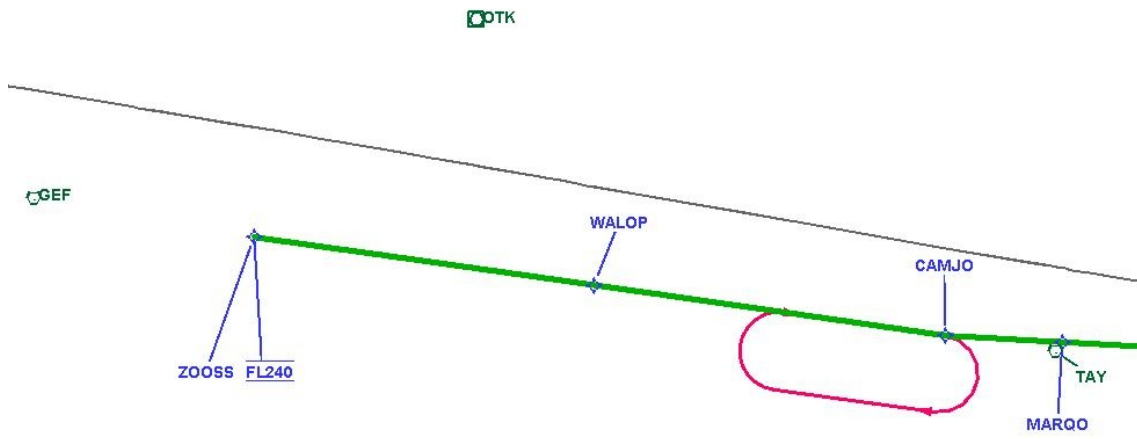
DME DME Assessment Results for MARQO3 path WALOP_ZOISS

Graphic Depiction 1



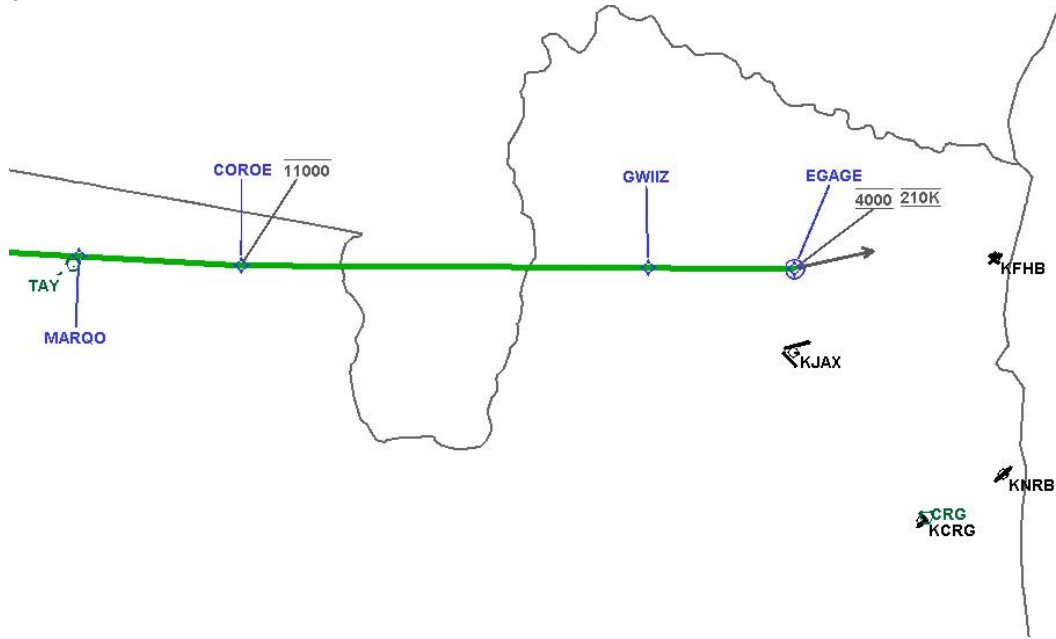
DME DME Assessment Results for MARQO3 path WALOP_ZOOSS

Graphic Depiction 2



DME DME Assessment Results for MARQO3 path WALOP_ZOOSS

Graphic Depiction 3



DME ESVs								
#	Name	Lat/Lon	MAGVAR	Range	Elevation [ft]	Frequency	Replaces	Status
1	AYS FAA 698108-2 AYS [IFPA]	N31° 16' 09.93", W082° 33' 23.20"	0.0 E	40	154.8	110.2	AYS FAA 698108-2	
Restriction:		Bearing [True]: 210.0° to 260.0° Bearing [Mag]: 210.0° to 260.0°				Distance: Beyond 35.0 NM Altitude: Below 2000.0 ft		
ESV:		Bearing [True]: 80.0° to 232.0° Bearing [Mag]: 80.0° to 232.0°				Arc Distance: Out to 66.0 NM Altitude: 4000.0 to 19000.0 ft		
2	CTY FAA 704013-58 CTY [IFPA]	N29° 35' 56.40", W083° 02' 55.65"	2.0 W	40	33.8	112.0	CTY FAA 704013-58	
ESV:		Bearing [True]: 6.0° to 47.0° Bearing [Mag]: 8.0° to 49.0°				Arc Distance: Out to 67.0 NM Altitude: 4900.0 to 18100.0 ft		
3	GNV FAA 704230-38 GNV [IFPA]	N29° 41' 31.61", W082° 16' 22.70"	4.0 W	40	127.5	116.2	GNV FAA 704230-38	
Restriction:		Bearing [True]: 356.0° to 356.0° Bearing [Mag]: 0° to 360.0°				Distance: Beyond 25.0 NM Altitude: Below 3000.0 ft		
ESV:		Bearing [True]: 325.0° to 20.0° Bearing [Mag]: 329.0° to 24.0°				Arc Distance: Out to 60.0 NM Altitude: 4000.0 to 14500.0 ft		
4	OTK FAA 872007-10 OTK [IFPA]	N30° 46' 49.60", W083° 16' 47.02"	2.0 W	130	199.4	114.8	OTK FAA 872007-10	
ESV:		Bearing [True]: 100.0° to 125.0° Bearing [Mag]: 102.0° to 127.0°				Arc Distance: Out to 71.0 NM Altitude: 5000.0 to 16000.0 ft		