

FEDERAL AVIATION ADMINISTRATION
FLIGHT STANDARDS SERVICE
STANDARD TERMINAL ARRIVAL (STAR)

Bearings, headings, courses, tracks and radials are magnetic. Elevations and altitudes are in feet, MSL. Altitudes are minimum altitudes unless otherwise indicated.
Ceilings are in feet above airport elevation. Distances are in nautical miles. Visibilities are in statute miles or feet RVR unless otherwise indicated.

Arrival Name	Number	STAR Computer Code	Superseded Number	Dated	Effective Date
DREEM (RNAV)	THREE	GASSE.DREEM3	TWO	12/07/2017	

TRANSITION ROUTES:

Transition Name	Transition Computer Codes	From FIX/NAVAID	To FIX/NAVAID	Course	Distance	MEA	MOCA	MAA	Crossing Altitudes / Fixes
DEER PARK	DPK.DREEM3	DPK VOR/DME	DPK VOR/DME						
			BELTT	057.36	21.74	3100	3100		
			MAD VOR/DME	057.56	20.10	3100	3100		
			WEGOT	034.33	14.31	3100	3100		
			HFD VOR/DME	034.47	06.37	3100	3100		
			DVANY	055.50	17.22	3100	3100		
			GRAYM	056.23	18.78	3100	3100		
			GASSE	055.05	12.49	3100	3100		AT 5000
HARTFORD	HFD.DREEM3	HFD VOR/DME	HFD VOR/DME						
			DVANY	055.50	17.22	3100	3100		
			GRAYM	056.23	18.78	3100	3100		
			GASSE	055.05	12.49	3100	3100		AT 5000
WIPOR	WIPOR.DREEM3	WIPOR	WIPOR						
			PAISN	029.71	11.31	3100	3100		
			GRAYM	029.73	16.15	3100	3100		
			GASSE	055.05	12.49	3100	3100		AT 5000
YANTC	YANTC.DREEM3	YANTC	YANTC						
			MOGUL	013.43	10.00	3100	3100		
			BLATT	013.48	06.24	3100	3100		
			GRAYM	013.47	16.46	3100	3100		
			GASSE	055.05	12.49	3100	3100		AT 5000

ARRIVAL ROUTE DESCRIPTION:

BED: FROM GASSE ON TRACK 055.99/7.76 TO DREEM.

LANDING BED RWY 11: FROM DREEM ON TRACK 062.44/3.20 TO CROSS CHKST AT OR ABOVE 3100, THEN ON TRACK 062.48/8.40 TO CROSS ZELKA AT OR ABOVE 2000. EXPECT ILS OR RNAV RWY 11 APPROACH.

LANDING BED RWY 29: FROM DREEM ON TRACK 062.50/12.41 TO CROSS RRENA AT OR ABOVE 3100, THEN ON TRACK 078.16/6.08 TO CROSS RIKAH AT OR ABOVE 3000, THEN ON TRACK 078.16. EXPECT RADAR VECTORS TO FINAL APPROACH COURSE.

LANDING LWM/BVY: FROM GASSE ON TRACK 055.99/7.76 TO DREEM, THEN ON TRACK 062.50/12.41 TO CROSS RRENA AT OR ABOVE 3100, THEN ON TRACK 078.16/6.08 TO CROSS RIKAH AT OR ABOVE 3000, THEN ON TRACK 078.16. EXPECT RADAR VECTORS TO FINAL APPROACH COURSE.

FEDERAL AVIATION ADMINISTRATION
FLIGHT STANDARDS SERVICE
STANDARD TERMINAL ARRIVAL (STAR)

Bearings, headings, courses, tracks and radials are magnetic. Elevations and altitudes are in feet, MSL. Altitudes are minimum altitudes unless otherwise indicated.
Ceilings are in feet above airport elevation. Distances are in nautical miles. Visibilities are in statute miles or feet RVR unless otherwise indicated.

Arrival Name	Number	STAR Computer Code	Superseded Number	Dated	Effective Date
DREEM (RNAV)	THREE	GASSE.DREEM3	TWO	12/07/2017	

PBN REQUIREMENT NOTES:

RNAV 1 - DME/DME/IRU OR GPS

EQUIPMENT REQUIREMENT NOTES:

RADAR REQUIRED

PROCEDURAL DATA NOTES:

NOTE: WIPOR TRANSITION, ATC ASSIGNED ONLY.

FIXES AND/OR HOLDING PATTERNS:

CHART HOLDING AT DREEM: HOLD SW, LT, 055.99 INBOUND, 10 NM LEGS, 210 KIAS.

COMMUNICATIONS:

CHART: BOS APP CON, BRADLEY APP CON

AIRPORTS SERVED:

<u>AIRPORT ID</u>	<u>CITY</u>	<u>STATE</u>
BED	BEDFORD	MA
BVY	BEVERLY	MA
LWM	LAWRENCE	MA

LOST COMMUNICATIONS PREFERENCES:

REMARKS:

THE ENVIRONMENTAL REVIEW UNDER ORDER 1050.1 (LATEST EDITION) AND THE NOISE SCREENING HAVE BEEN ACCOMPLISHED.

BED RWY 11: USED 1000 FT OF AIRSPACE IN SEGMENT CHKST-ZELKA.

3100 FT MOCA VALUES DUE TO OBST 2048 MSL TWR (25-000157) LOCATED DOWNSTREAM IN COMMON ROUTE.

DO NOT CHART MOCA VALUES (ALL ARE WITHIN 500 FT OF MEA VALUES).

COMM: SPECIFIC ATC REQUEST TO HAVE BOTH BOS AND BRADLEY APP CON REMAIN CHARTED.

ADDITIONAL FLIGHT DATA:

DME/DME ASSESSMENT: SAT (RNP 2.0)

MAG VAR: BED 16W/1995

CHART AT ZELKA TERMINUS: BED LDG RWY 11

CHART AT RIKAH TERMINUS: BED LDG RWY 29

CHART AT RIKAH TERMINUS: LDG BVY, LWM

FEDERAL AVIATION ADMINISTRATION
FLIGHT STANDARDS SERVICE
STANDARD TERMINAL ARRIVAL (STAR)

Bearings, headings, courses, tracks and radials are magnetic. Elevations and altitudes are in feet, MSL. Altitudes are minimum altitudes unless otherwise indicated.
Ceilings are in feet above airport elevation. Distances are in nautical miles. Visibilities are in statute miles or feet RVR unless otherwise indicated.

Arrival Name	Number	STAR Computer Code	Superseded Number	Dated	Effective Date
DREEM (RNAV)	THREE	GASSE.DREEM3	TWO	12/07/2017	

FLIGHT INSPECTED BY:

ORGANIZATION: **DATE:**

Flight Inspected Signature: _____

DEVELOPED BY:

CASIMIR TABAKA (BARBARA GORMAN)

AJV-A432

05/22/2025

Developed By Signature: _____

APPROVED BY:

CASIMIR TABAIKA

AJV-A430

Approved By Signature: _____

CHANGES:

1. ADDED ENROUTE TRANSITION FROM DPK VOR/DME.
2. ADDED CROSSING ALTITUDE 5000 AT GASSE.
3. REPLACED ORW VOR/DME WITH YANTC WP AND RENAMED TRANSITION.
4. ADDED ENROUTE TRANSITION FROM EEGUL WP.
5. ADDED ENROUTE TRANSITION FROM TERIA WP.
6. TRANSITION ROUTES: UPDATED MEAS AND ADDED MOCAS.
7. REMOVED MEAS FROM ARRIVAL ROUTE DESCRIPTION.
8. ADDED COMMON ROUTE VERSUS A COMMON POINT FOR BED AIRPORT.
9. REMOVED BED RWY 23 TRANSITION.
10. LANDING BED RWY 11: REMOVED WANLA; ADDED WP CHKST AOA 3100; ADDED ZELKA AOA 2000; REVISED EXPECT APPROACH TEXT.
11. LANDING BED RWY 29: REMOVED WANLA, ZELKA AND EXXRO; ADDED WP RRENA AOA 3100 AND CROSS RIKAH AOA 3000; UPDATED FM LEG AND EXPECT TEXT.
12. REMOVED RECOMMENDED NAVAID FROM 17.2 FORM.
13. COMBINED LANDING LWM/BVY: REMOVED WANLA AND ZELKA; ADDED RRENA AOA 3100 AND CROSS RIKAH AOA 3000; UPDATED FM LEG.
14. PROCEDURAL DATA NOTES: MOVED RADAR REQUIRED TO EQUIPMENT REQUIREMENT NOTES; COMBINED AND MOVED RNAV 1, DME/DME/IRU OR GPS REQUIRED TO PBN REQUIREMENT.
15. UPDATED NOTE: FROM "WIPOR TRANSITION ATC ASSIGNED" TO "WIPOR TRANSITION, ATC ASSIGNED ONLY."
16. REMOVED NOTE AT WANLA: LANDING KBED RWY 11 FOR RNAV APPROACH EXPECT CLEARANCE FROM WANLA (IAF).
17. REMOVED EXPECT NOTES AT DVANY, PAISN, BLATT, AND GASSE.
18. UPDATED HOLDING INBOUND COURSE AT DREEM FROM 053.00 TO 055.99; ADDED 210 KIAS.
19. COMMUNICATIONS: REMOVED BED ATIS, BVY ATIS, LWM ATIS.
20. REMOVED AIRPORT NAME FROM AIRPORTS SERVED ALONG WITH K IDENT ON 17.1 FORM.

REASONS:

- 1/2. ATC REQUEST, REPRESENTS DAILY OPERATIONAL REQUIREMENT.
3. VOR MON DECOMMISSIONING OF ORW.
- 4/5. ATC REQUEST, COMBINE ZELKA (RNAV) STAR WITH THIS PROCEDURE.
6. MEAS AMENDED TO LOWEST ALTITUDE THAT WILL PASS A DME/DME SCREEN AND MOCAS UPDATED TO CURRENT REQUIREMENTS.
7. NO LONGER A REQUIREMENT.
8. IAW 8260.19J 4-5-12 C.

FEDERAL AVIATION ADMINISTRATION
FLIGHT STANDARDS SERVICE
STANDARD TERMINAL ARRIVAL (STAR)

Bearings, headings, courses, tracks and radials are magnetic. Elevations and altitudes are in feet, MSL. Altitudes are minimum altitudes unless otherwise indicated.
Ceilings are in feet above airport elevation. Distances are in nautical miles. Visibilities are in statute miles or feet RVR unless otherwise indicated.

Arrival Name	Number	STAR Computer Code	Superseded Number	Dated	Effective Date
DREEM (RNAV)	THREE	GASSE.DREEM3	TWO	12/07/2017	

9. ATC REQUEST, RWY 23 RARELY USED FOR ARRIVALS.
10. ATC REQUEST; OBSTACLE CLEARANCE; ZELKA IAF FOR KBED PROCEDURE; IAW 8260.19J 4-5-12 C(2).
11. ZELKA TERMINATION POINT FOR RWY 11 TRANSITION; EXXRO REMOVED PER ATC REQUEST; OBSTACLE CLEARANCE.
12. NO LONGER REQUIRED.
13. ATC REQUEST; OBSTACLE CLEARANCE.
14. PER 8260.19J CRITERIA STANDARDS DOCUMENTATION.
15. IAW 8260.16J 4-5-12 D(3)B.
16. WANLA REMOVED FROM PROCEDURE.
17. NO LONGER PERMITTED.
18. INBOUND COURSE FROM GASSE TO DREEM UPDATED.
19. IAW 8260.19J 4-5-12 F.
20. PER 8260.19J DOCUMENTATION STANDARDS.

07/11/2025: THIS IS AN UPDATED COPY OF THE FORM DEVELOPED ON 05/22/2025.

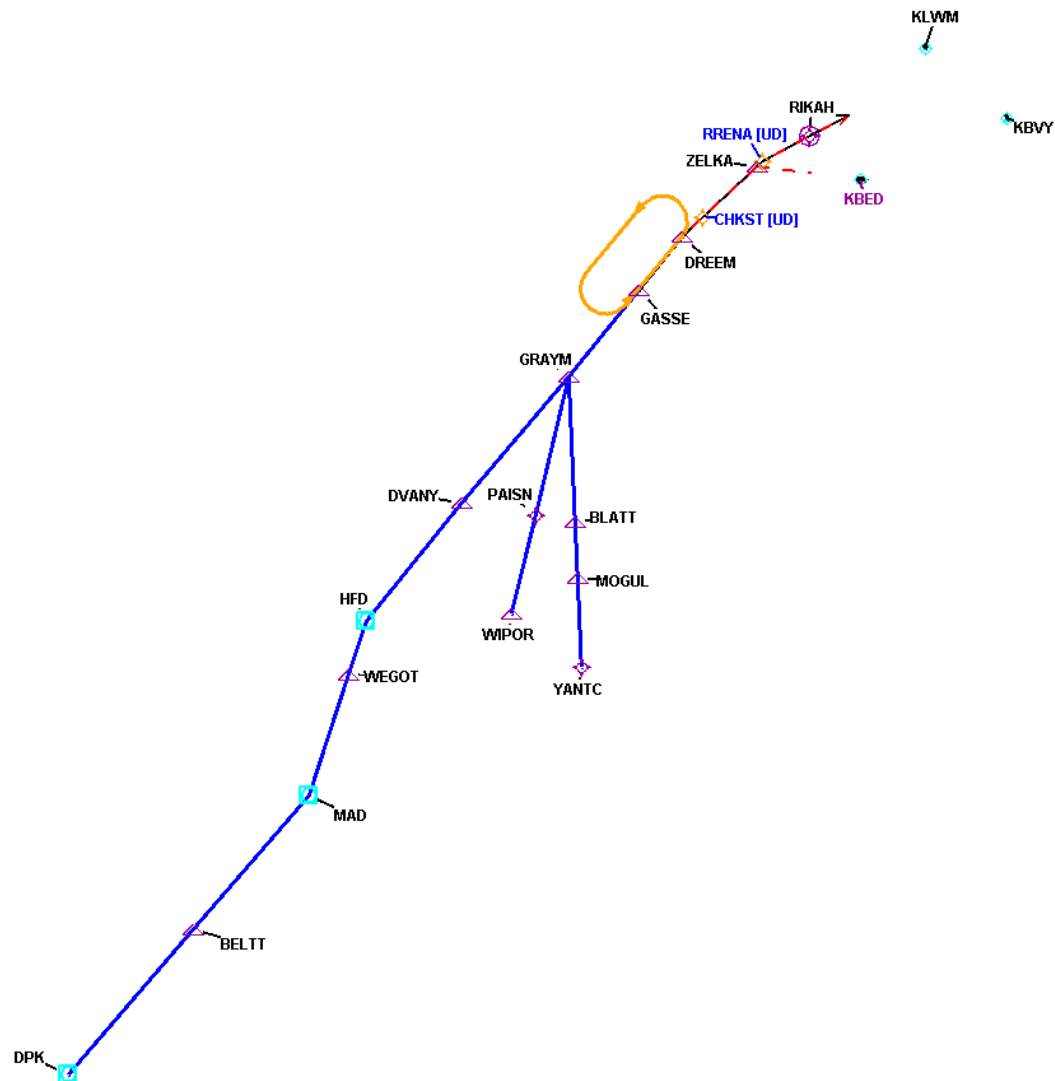
1. REMOVED EEGUL AND TERIA FIXES/TRANSITIONS TO INCLUDE ASSOCIATED FIXES BLOBR AND HOOYA.

FEDERAL AVIATION ADMINISTRATION
FLIGHT STANDARDS SERVICE
STANDARD TERMINAL ARRIVAL (STAR)

Bearings, headings, courses, tracks and radials are magnetic. Elevations and altitudes are in feet, MSL. Altitudes are minimum altitudes unless otherwise indicated.
Ceilings are in feet above airport elevation. Distances are in nautical miles. Visibilities are in statute miles or feet RVR unless otherwise indicated.

Arrival Name	Number	STAR Computer Code	Superseded Number	Dated	Effective Date
DREEM (RNAV)	THREE	GASSE.DREEM3	TWO	12/07/2017	

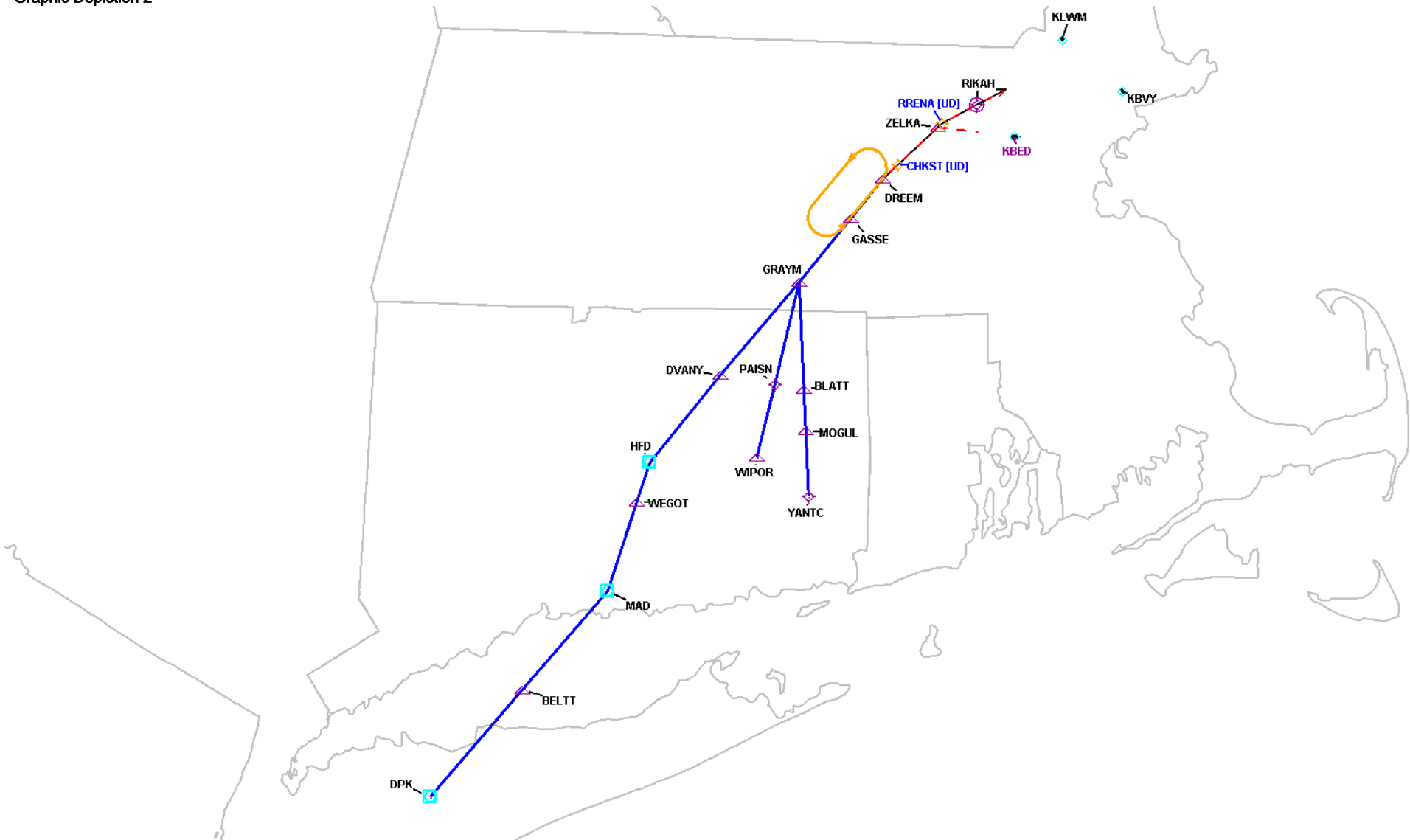
Graphic Depiction 1



FEDERAL AVIATION ADMINISTRATION
FLIGHT STANDARDS SERVICE
STANDARD TERMINAL ARRIVAL (STAR)

Bearings, headings, courses, tracks and radials are magnetic. Elevations and altitudes are in feet, MSL. Altitudes are minimum altitudes unless otherwise indicated.
Ceilings are in feet above airport elevation. Distances are in nautical miles. Visibilities are in statute miles or feet RVR unless otherwise indicated.

Arrival Name	Number	STAR Computer Code	Superseded Number	Dated	Effective Date
DREEM (RNAV)	THREE	GASSE.DREEM3	TWO	12/07/2017	
Graphic Depiction 2					



FEDERAL AVIATION ADMINISTRATION
FLIGHT STANDARDS SERVICE
STAR (DATA RECORD)

Arrival Name DREEM (RNAV)		Number THREE		STAR Computer Code GASSE.DREEM3		Superseded Number TWO		Dated 12/07/2017	Effective Date
<u>FIX/NAVAID</u>	<u>LAT/LONG</u>	<u>C</u>	<u>FO/FB</u>	<u>LEG TYPE</u>	<u>TC</u>	<u>DIST (NM)</u>	<u>ALTITUDE</u>	<u>SPEED</u>	<u>REMARKS</u>
En Route Transition									
DPK VOR/DME	404730.36N / 0731813.24W	Y		IF					DPK.DREEM3
BELTT	410348.61N / 0725913.52W	Y	FB	TF	041.36	21.74			
MAD VOR/DME	411849.90N / 0724131.93W	Y	FB	TF	041.56	20.10			
WEGOT	413225.38N / 0723532.19W	Y	FB	TF	018.33	14.31			
HFD VOR/DME	413827.98N / 0723250.70W	Y	FB	TF	018.47	06.37			
DVANY	415144.56N / 0721811.25W	Y	FB	TF	039.50	17.22			
GRAYM	420604.27N / 0720153.49W	Y	FB	TF	040.23	18.78			
GASSE	421546.19N / 0715117.51W	Y	FB	TF	039.05	12.49	AT 5000		
En Route Transition									
HFD VOR/DME	413827.98N / 0723250.70W	Y		IF					HFD.DREEM3
DVANY	415144.56N / 0721811.25W	Y	FB	TF	039.50	17.22			
GRAYM	420604.27N / 0720153.49W	Y	FB	TF	040.23	18.78			
GASSE	421546.19N / 0715117.51W	Y	FB	TF	039.05	12.49	AT 5000		
En Route Transition									
WIPOR	413923.07N / 0721037.67W	Y		IF					WIPOR.DREEM3
PAISN	415022.56N / 0720702.55W	Y	FB	TF	013.71	11.31			
GRAYM	420604.27N / 0720153.49W	Y	FB	TF	013.73	16.15			
GASSE	421546.19N / 0715117.51W	Y	FB	TF	039.05	12.49	AT 5000		
En Route Transition									
YANTC	413322.81N / 0715956.95W	Y		IF					YANTC.DREEM3
MOGUL	414322.76N / 0720032.87W	Y	FB	TF	357.43	10.00			
BLATT	414937.10N / 0720054.94W	Y	FB	TF	357.48	06.24			
GRAYM	420604.27N / 0720153.49W	Y	FB	TF	357.47	16.46			
GASSE	421546.19N / 0715117.51W	Y	FB	TF	039.05	12.49	AT 5000		



FEDERAL AVIATION ADMINISTRATION
FLIGHT STANDARDS SERVICE
STAR (DATA RECORD)

Arrival Name DREEM (RNAV)		Number THREE		STAR Computer Code GASSE.DREEM3		Superseded Number TWO		Dated 12/07/2017	Effective Date
FIX/NAVAID	LAT/LONG	C	FO/FB	LEG TYPE	TC	DIST (NM)	ALTITUDE	SPEED	REMARKS
Common Route									
GASSE	421546.19N / 0715117.51W	Y		IF			AT 5000		GASSE.DREEM3
DREEM	422142.65N / 0714434.13W	Y	FB	TF	039.99	07.76			
Common Route									
GASSE	421546.19N / 0715117.51W	Y		IF			AT 5000		GASSE.DREEM3
DREEM	422142.65N / 0714434.13W	Y	FB	TF	039.99	07.76			
RRENA	423014.73N / 0713223.97W	Y	FB	TF	046.50	12.41	AT/ABOVE 3100		
RIKAH	423305.03N / 0712507.23W	Y	FO	TF	062.16	06.08	AT/ABOVE 3000		
KBVY,KLWM				FM	062.16				
Runway Transition									
DREEM	422142.65N / 0714434.13W	Y		IF					
CHKST	422355.01N / 0714126.27W	Y	FB	TF	046.44	03.20	AT/ABOVE 3100		
ZELKA	422941.90N / 0713312.27W	Y	FB	TF	046.48	08.40	AT/ABOVE 2000		
KBED:RWY 11									
Runway Transition									
DREEM	422142.65N / 0714434.13W	Y		IF					
RRENA	423014.73N / 0713223.97W	Y	FB	TF	046.50	12.41	AT/ABOVE 3100		
RIKAH	423305.03N / 0712507.23W	Y	FO	TF	062.16	06.08	AT/ABOVE 3000		
KBED:RWY 29				FM	062.16				