

Flight Procedures Cover Page	Task Action: FLIGHT CHECK	Task Type: IAP	Estimated Chart Date: 05/14/2026	APWS Task ID: AB66F972D4954F9A9C0C24517B1909EB	APWS Project ID: BD9894CF1012492F9C3227FDBC19BE41
Procedure: RNAV (GPS) Y RWY 10 AMDT 0B		Enroute: NO	Specialist: Shedd, Steven		Agreement Number:
Airport ID: KHIE			Airport City: WHITEFIELD		State: NH
Facility ID:	Facility Type:	Flight Inspection Remark Type: New FC Slot			

Procedure Comments:
CANCELS NOTAM FDC 5/0574.

ACTIVE AIRPORT DATA USED.

KHIE_RNAV_(GPS)_Y_RWY_10_ORIG_B_1 : Shows missed penetration 2819 AAO 442624.00N/0712806.00W.
KHIE_RNAV_(GPS)_Y_RWY_10_ORIG_B_2 : Shows final results with the speed restriction.

CONTACT CASEY HILL (405) 954-0624. FEDERAL AVIATION ADMINISTRATION.



OLD

WHITEFIELD, NEW HAMPSHIRE

AL-5082 (FAA)

25219

APP CRS	Rwy Ldg	4001
104°	TDZE	1057
	Apt Elev	1072

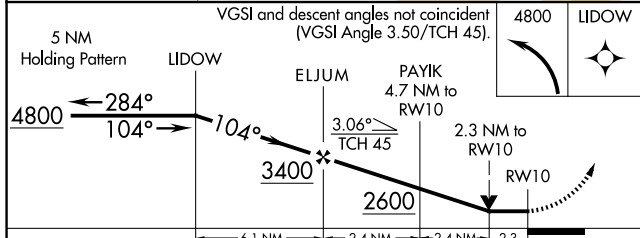
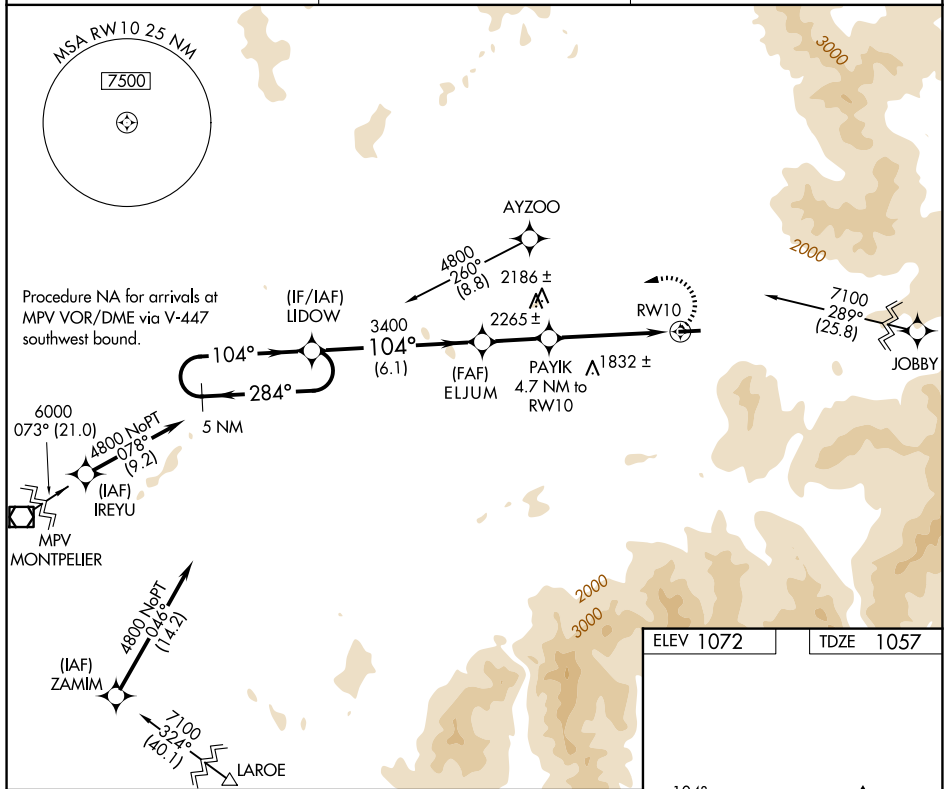
RNAV (GPS) Y RWY 10

MOUNT WASHINGTON RGNL (HIE)

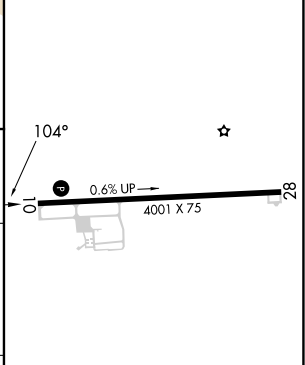
⚠ Circling NA south of Rwy 10-28. DME/DME RNP-0.3 NA. Visibility reduction by helicopters NA. When local altimeter setting not received, use Lyndonville altimeter setting and increase all MDA 80 feet; increase LNAV and Circling Cat B/C visibilities ¼ mile. VDP NA with Lyndonville altimeter setting. Circling to Rwy 28 NA at night.

⚠ MISSED APPROACH: Climbing left turn to 4800 direct LIDOW and hold.

ASOS 118.525	BOSTON CENTER 135.7 282.2	UNICOM 122.8 (CTAF) 0
------------------------	-------------------------------------	---------------------------------



ELEV 1072	TDZE 1057
-----------	-----------



CATEGORY	A	B	C	D
LNAV MDA	1940-1¼	883 (900-1¼)	1940-2¾ 883 (900-2¾)	NA
CIRCLING	1940-1¼	868 (900-1¼)	1980-2¾ 908 (1000-2¾)	NA

REIL Rwy 10 and 28 **0**
MIRL Rwy 10-28 **0**

NE-1, 27 NOV 2025 to 25 DEC 2025

NE-1, 27 NOV 2025 to 25 DEC 2025

WHITEFIELD, NEW HAMPSHIRE
Orig-A 30DEC21

44°22'N-71°33'W

MOUNT WASHINGTON RGNL (HIE)

RNAV (GPS) Y RWY 10