

Flight Procedures Cover Page	Task Action: FLIGHT CHECK	Task Type: IAP	Estimated Chart Date: 10/02/2025	APWS Task ID: AC37675EBBBE47229632CA628BB2F778	APWS Project ID: 00635F1B4D0640CFA1DAA2BEEBEC54EE
Procedure: RNAV (GPS) RWY 18 AMDT 2		Enroute: NO	Specialist: Smart, Phillip		Agreement Number:
Airport ID: KGRE			Airport City: GREENVILLE		State: IL
Facility ID:	Facility Type:	Flight Inspection Remark Type: New FC Slot			

Procedure Comments:
FULL AMENDMENT

ACTIVE AIRPORT DATA USED.

CONTACT ROBERT HAMILTON 405-954-4608. FEDERAL AVIATION ADMINISTRATION.

08/14/25: THIS IS A CORRECTED COPY OF THE FORM APPROVED ON 08/04/25.
8260-2 FIX HODAN.
1. ADDED HOLDING PAT 1 TO FIX USE RNAV (GPS) RWY 36 KGRE GREENVILLE.



OLD

GREENVILLE, ILLINOIS

AL-5503 (FAA)

24361

WAAS CH 69638 W18A	APP CRS 182°	Rwy Idg 4002 TDZE 541 Apt Elev 541
--	------------------------	---

RNAV (GPS) RWY 18

GREENVILLE (GRE)

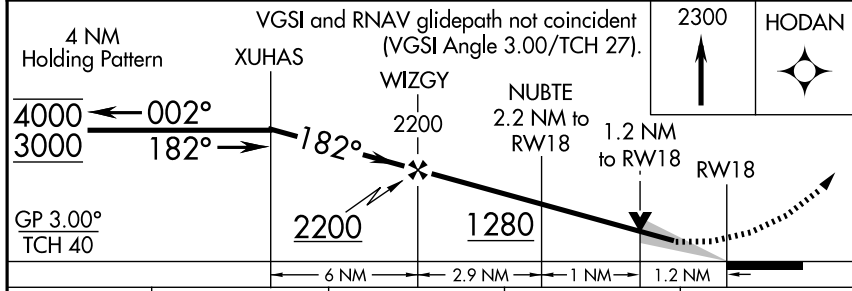
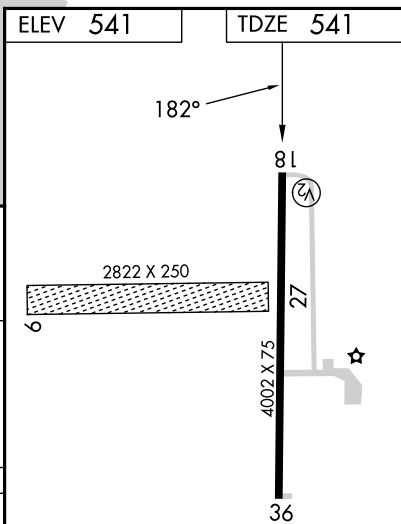
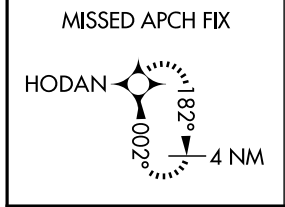
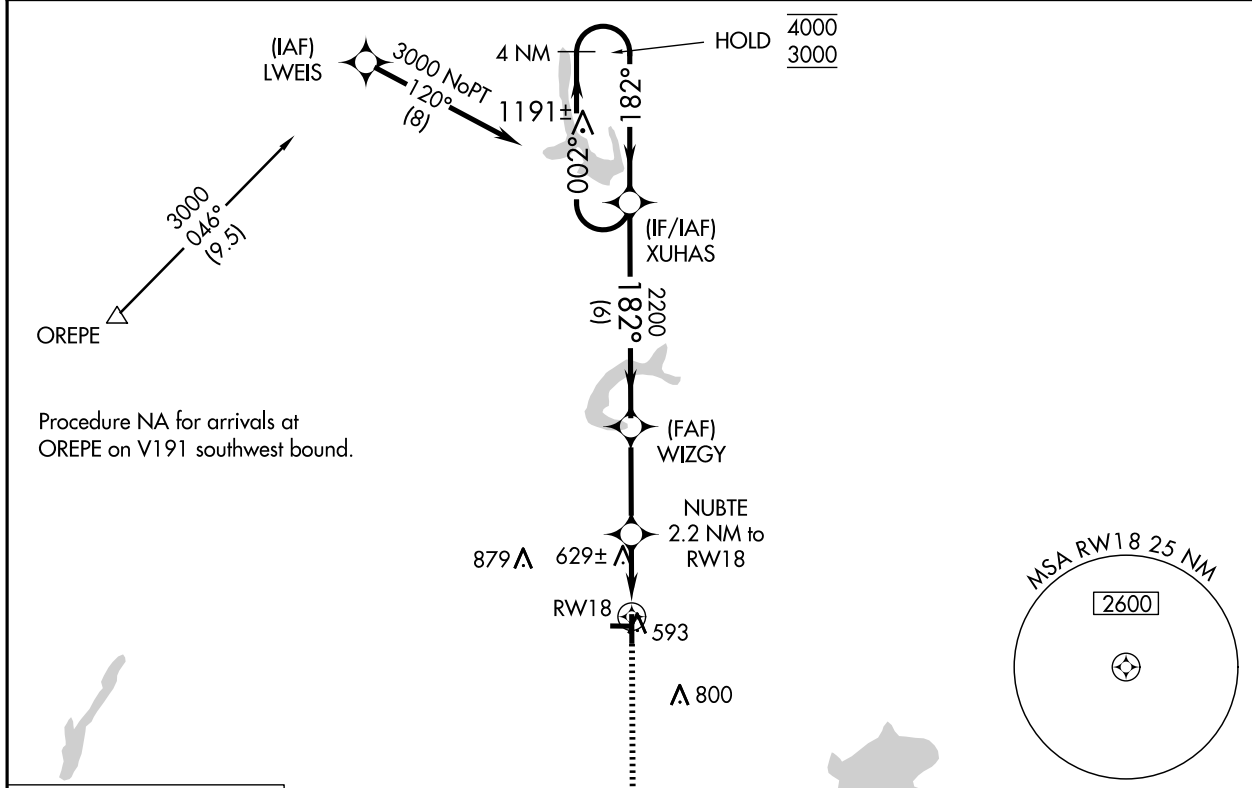
RNP APCH - GPS.

▼ Circling NA to Rwy 9 and 27. Baro-VNAV and VDP NA when using Salem altimeter setting. For uncompensated Baro-VNAV systems, LNAV/VNAV NA below -16°C or above 54°C.

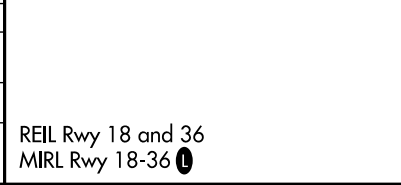
▲ NA Procedure NA at night. When local altimeter setting not received, use Salem altimeter setting and increase LPV DA to 905 feet; increase LNAV/VNAV DA to 905 feet; increase all MDAs 60 feet and LNAV visibility Cat C/D ¼ SM, and Circling visibility Cat D ¼ SM.

MISSED APPROACH: Climb to 2300 direct HODAN and hold.

AWOS-AV 123.05	KANSAS CITY CENTER 124.3 269.15	UNICOM 123.05 (CTAF) 0
--------------------------	---	----------------------------------



CATEGORY	A	B	C	D
LPV DA	848-1 307 (400-1)			
LNAV/VNAV DA	848-1 307 (400-1)			
LNAV MDA	940-1 399 (400-1)		940-1 1/8 399 (400-1 1/8)	
C CIRCLING	980-1 439 (500-1)	1000-1 459 (500-1)	1220-2 679 (700-2)	1240-2 1/4 699 (700-2 1/4)



EC-3, 23 JAN 2025 to 20 FEB 2025

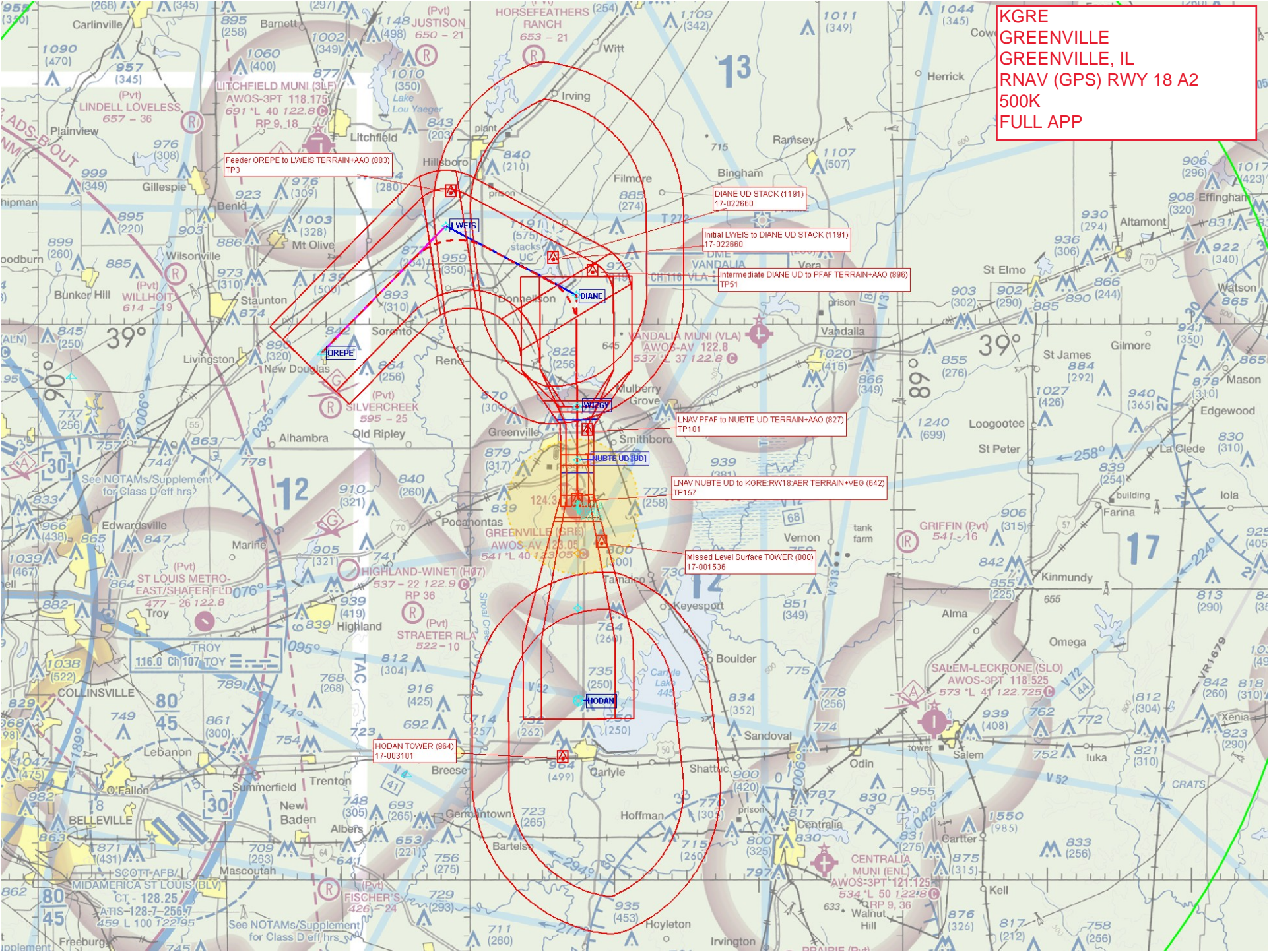
EC-3, 23 JAN 2025 to 20 FEB 2025

GREENVILLE, ILLINOIS
Amdt 1B 25JAN24

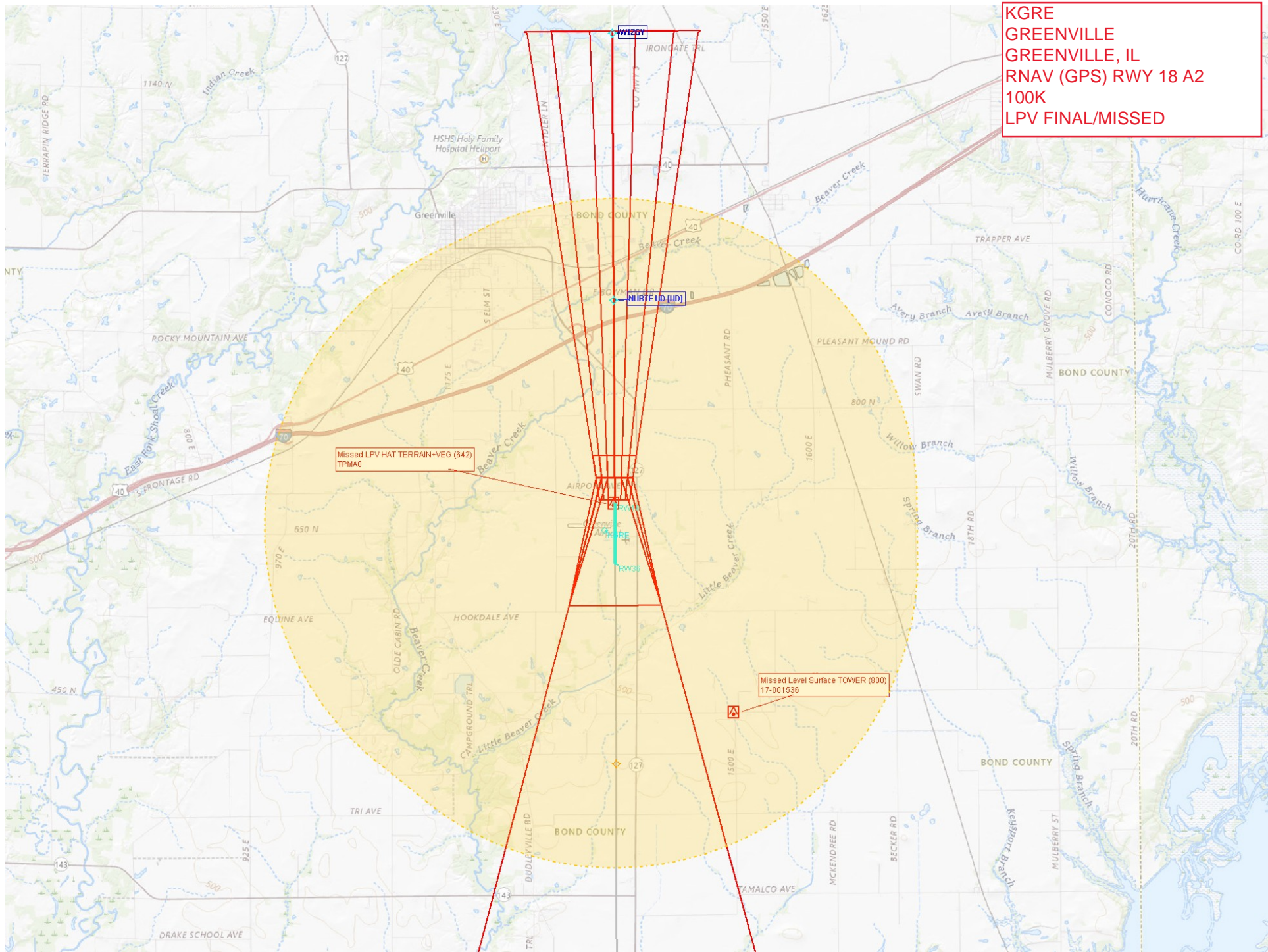
38°50'N-89°23'W

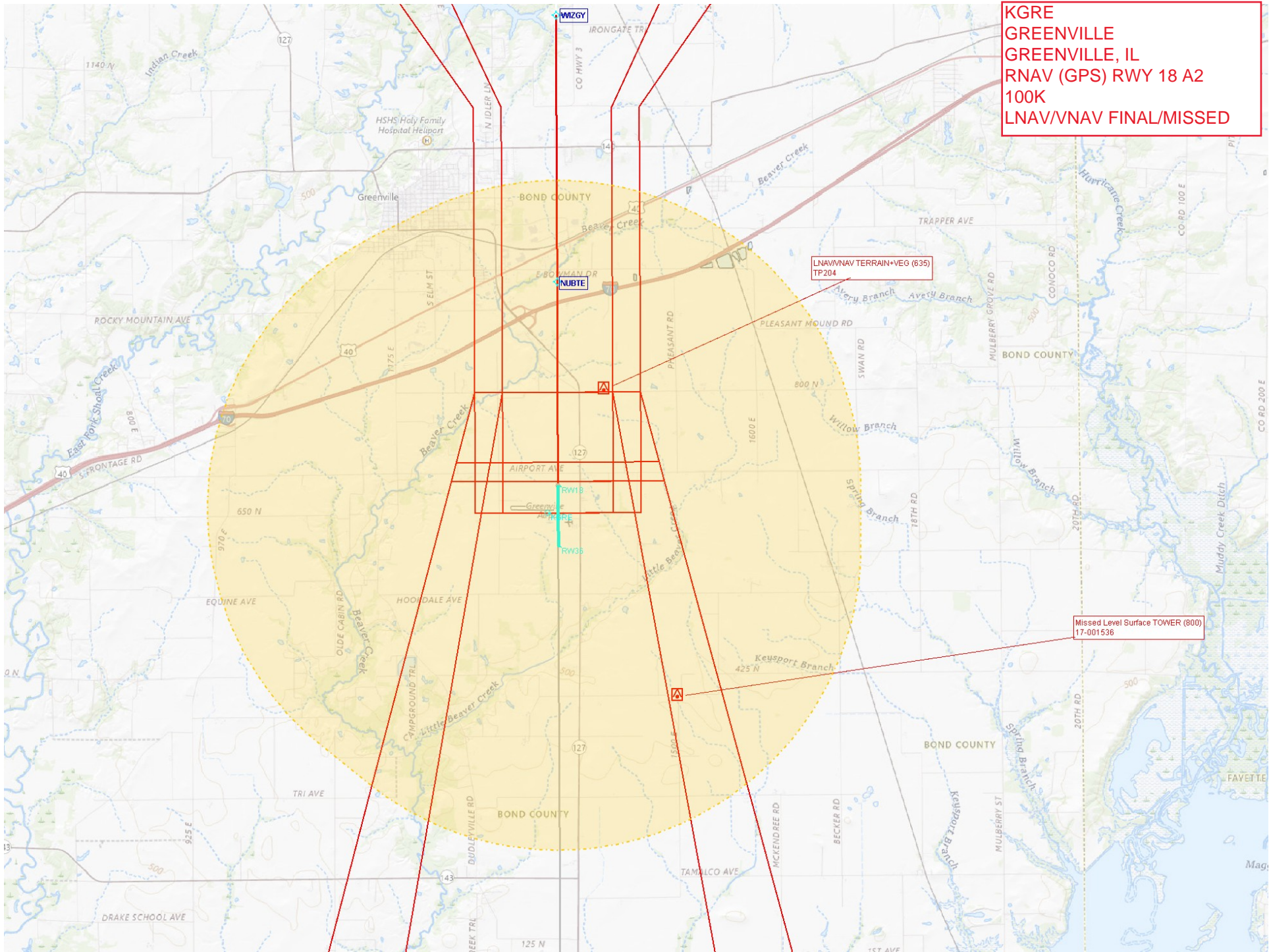
GREENVILLE (GRE)
RNAV (GPS) RWY 18

KGRE
GREENVILLE
GREENVILLE, IL
RNAV (GPS) RWY 18 A2
500K
FULL APP



KGRE
GREENVILLE
GREENVILLE, IL
RNAV (GPS) RWY 18 A2
100K
LPV FINAL/MISSED

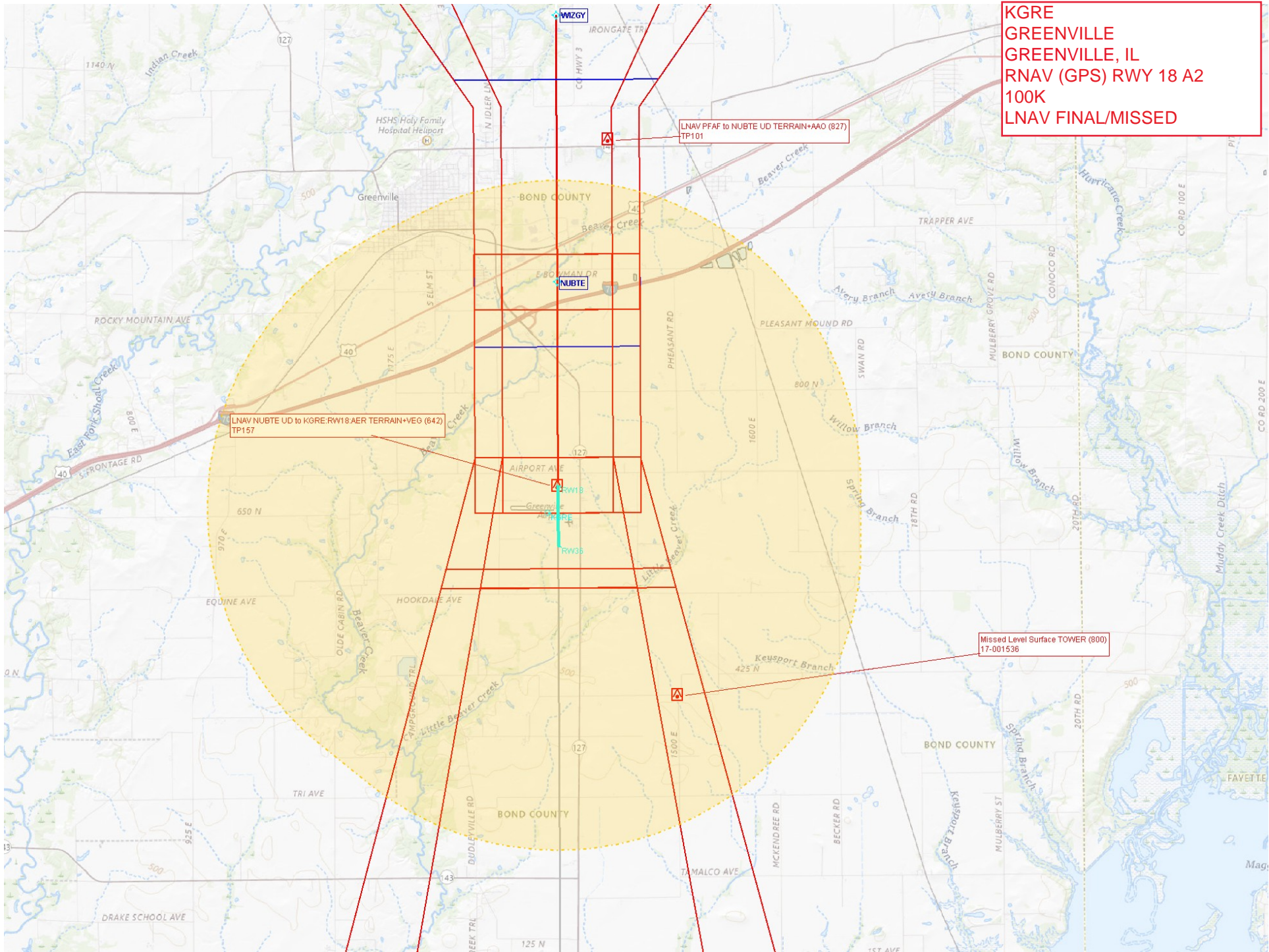




KGRE
GREENVILLE
GREENVILLE, IL
RNAV (GPS) RWY 18 A2
100K
LNAV/VNAV FINAL/MISSED

LNAV/VNAV TERRAIN+VEG (635)
TP204

Missed Level Surface TOWER (800)
17-001536

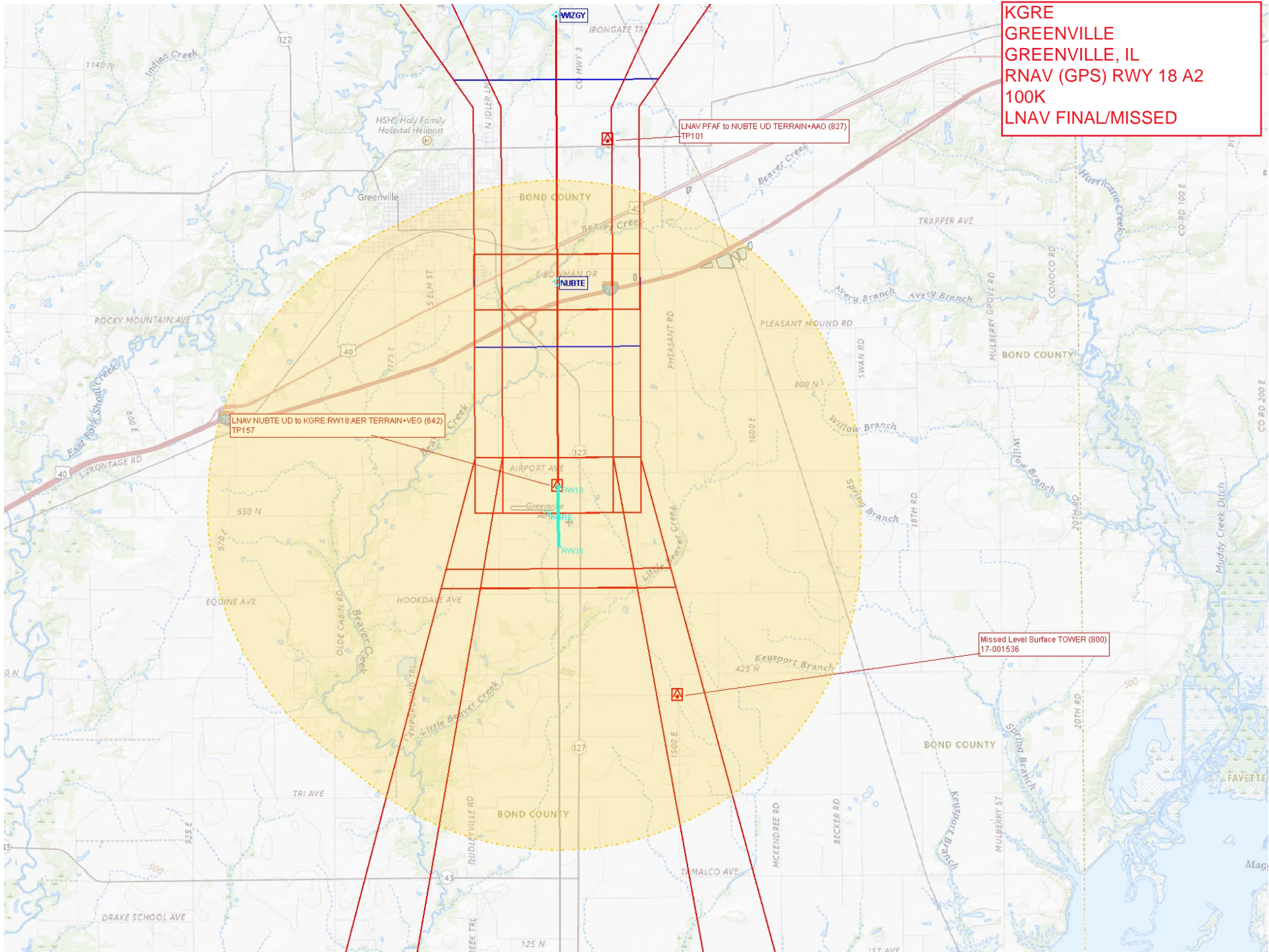


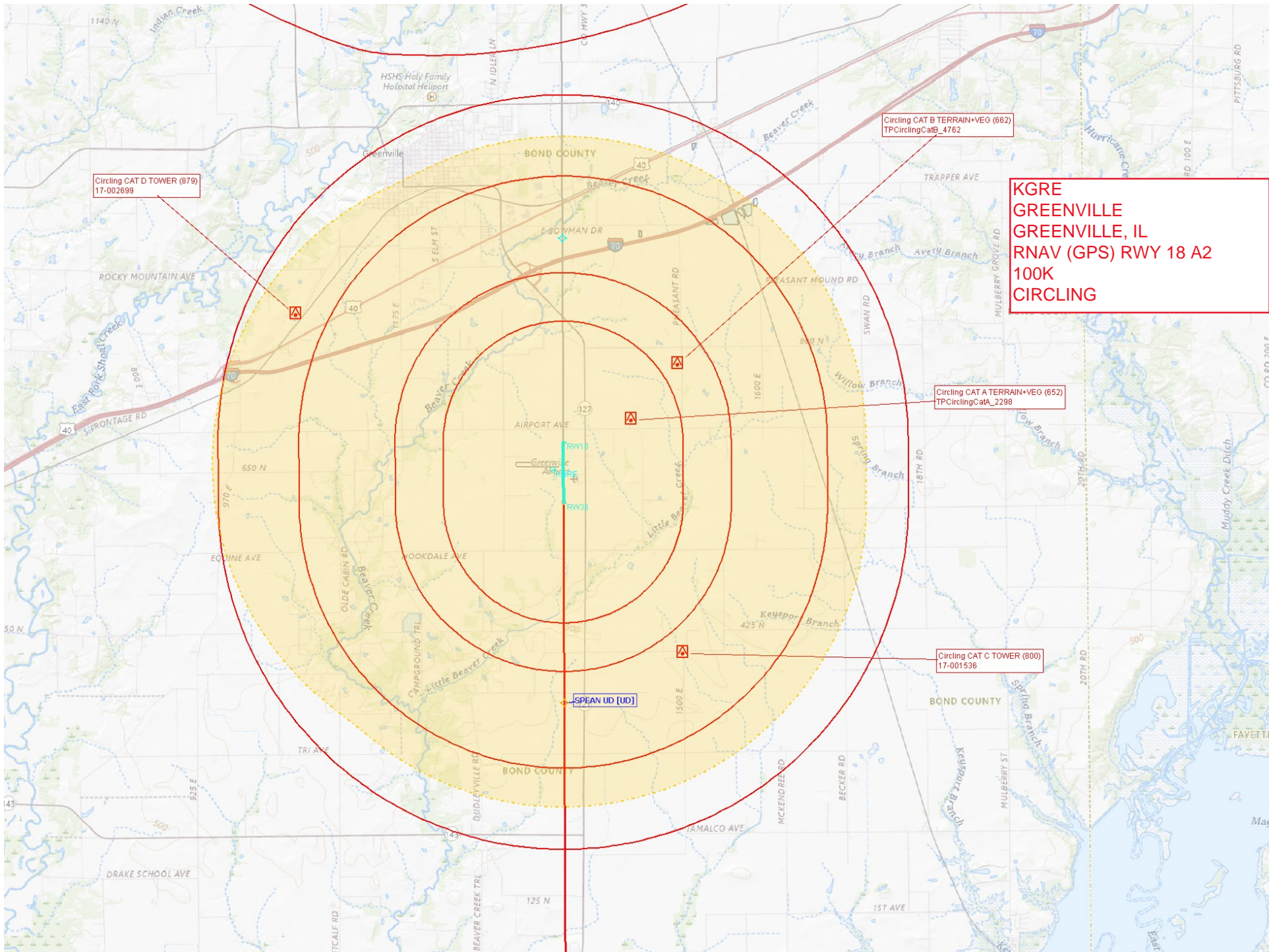
KGRE
GREENVILLE
GREENVILLE, IL
RNAV (GPS) RWY 18 A2
100K
LNAV FINAL/MISSED

LNAV NUBTE UD to KGRE: RWY 18 AER TERRAIN+VEG (642)
TP157

LNAV PFAF to NUBTE UD TERRAIN+AAO (827)
TP101

Missed Level Surface TOWER (800)
17-001536





Circling CAT D TOWER (879)
17-002699

Circling CAT B TERRAIN+VEG (662)
TPCirclingCatB_4762

KGRE
GREENVILLE
GREENVILLE, IL
RNAV (GPS) RWY 18 A2
100K
CIRCLING

Circling CAT A TERRAIN+VEG (652)
TPCirclingCata_2298

Circling CAT C TOWER (800)
17-001536

SPEAN UD [UD]