

DME DME Assessment Results for ALCRN1 path ALCRN_SNKEM

Results Summary

Flyability:	Completed
DME/DME:	Completed - No Critical DMEs
Name:	Erik J-CTR John
Project File:	C:\Users\Erik J-CTR John\OneDrive - Federal Aviation Administration\Desktop\RNAV Projects\PROJECT FILES\ZJX_ZMA VOR MON\KJAX ALCRN STAR\KJAX ALCRN STAR DME\KJAX ALCRN (RNAV) STAR DME 221118.tgs
Output File:	C:\Users\Erik J-CTR John\OneDrive - Federal Aviation Administration\Desktop\RNAV Projects\PROJECT FILES\ZJX_ZMA VOR MON\KJAX ALCRN STAR\KJAX ALCRN STAR DME\KJAX [IFPA] ALCRN1 20221129_1030 EST\ALCRN_SNKEM\KJAX ALCRN1 RNAV STAR ALCRN SNKEM 20221129_1030 EST.pdf
Procedure Name:	ALCRN1
Software: DmeDmePlugin:	7.0.2
Date/Time:	11/29/2022 10:30 EST
Databases:	DTED 0

Failures

No Failures

Warnings

No Warnings

Informational

No Informational

Notes For Flight Check

None

Flight Plan

Name	Type	Lat/Lon	Altitude (ft)	VNAV Mode	Ground Speed (kts)	Turn Type	Leg Type
ALCRN	WP	N30° 59' 12.93", W082° 14' 09.03"	6000	VNAV	200	FLY_BY	TF
SNKEM	WP	N30° 34' 06.24", W081° 45' 15.10"	4000	VNAV	200	FLY_OVER	TF

Flyability

Flight Type:	RNAV STAR
Selected Airport:	KJAX [IFPA]
Climb Gradient:	None assigned
Speeds:	200 Ground Speed to 11000 FT
	240 Ground Speed to 18000 FT
	260 Ground Speed to 24000 FT
	340 Ground Speed above 24000 FT
Descent During a Turn:	Allowed
VNAV Mode:	Flight Plan

DME DME Assessment Results for ALCRN1 path ALCRN_SNKEM

DME/DME	
RNP:	RNP 2
Flight Mode:	Manual
Line of Sight (DTED Level 0 Max):	Evaluated
Inertial Drift:	Enabled
Initial Drift:	0.558 NM
INS Drift Rate:	8.0 NM/Hour
Range Mode:	OSV
RNP Edges:	Evaluated
Min DME Range:	3.0 NM
DME Types:	DME, VOR-DME, VORTAC, TACAN
DME Include Angles:	30 to 150
Critical DMEs:	Not Allowed
DoD Facilities:	Included
Foreign Facilities:	Not included
High DMEs:	Included
Low DMEs:	Included
Terminal DMEs:	Included
Flight Check DMEs:	Not selected
Higher Altitudes:	Not Evaluated
Near Maximum Altitude:	Not Evaluated
Automatic ESVs:	Enabled
Disabled DMEs:	None

DME/DME (Continued)										
DMEs Used										
#	Name	Lat/Lon	MAGVAR	Range	Type	Source	Critical	Status	Time	Distance
1	TAY	N30° 30' 16.70", W082° 33' 10.45"	3.0 W	130	H	IFPA	NO	Enabled	74.7 %	74.7 %
2	SSI	N31° 03' 01.85", W081° 26' 45.47"	4.0 W	40	L	IFPA	NO	Enabled	78.5 %	78.5 %
3	CRG	N30° 20' 19.97", W081° 30' 35.74"	3.0 W	130	H	IFPA	NO	Enabled	59.4 %	59.4 %
4	NRB	N30° 23' 19.01", W081° 25' 23.08"	6.0 W	40	L	IFPA	NO	Enabled	54.7 %	54.7 %
5	AMG	N31° 32' 11.60", W082° 30' 29.12"	0.0 E	130	H	IFPA	NO	Enabled	7.9 %	7.9 %
6	AYS	N31° 16' 09.93", W082° 33' 23.20"	0.0 E	40	L	IFPA	NO	Enabled	45.6 %	45.6 %

Flight Check DME Selection						
Distance [NM]	Selected DMEs					Alternate
0.0	TAY	AYS	AMG			
2.8	TAY	AYS				
7.6	TAY	AYS	SSI			
14.3	TAY	CRG	AYS	SSI		
16.0	TAY	CRG	AYS	SSI	NRB	
16.2	TAY	CRG	SSI	NRB		
26.4	SSI	CRG	NRB			

Inertial Drift Segments			
#	Start Location	End Location	Length [NM]

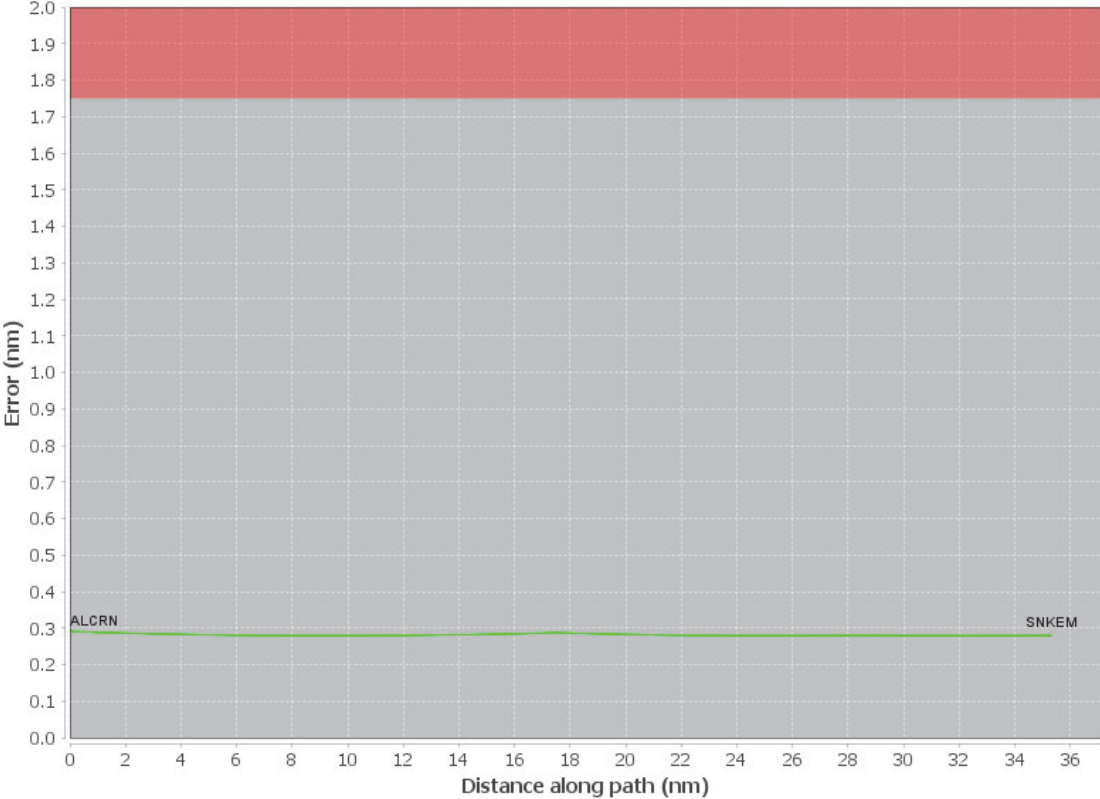
Available DMEs by Waypoints			
Waypoint Before	Waypoint After	DME List	Suggested DMEs
ALCRN	SNKEM	SSI, CRG, AMG, AYS, TAY, NRB	

DME DME Assessment Results for ALCRN1 path ALCRN_SNKEM

User Data Files								
#	File Name							
1	New Analysis.udt							
User DMEs								
#	Name	Lat/Lon	MAGVAR	Range	Elevation [ft]	Frequency	Replaces	Status
1	MGR FAA 815728-007 MGR [IFPA]	N31° 04' 56.17", W083° 48' 15.18"	-0.0 E	40	285.5	null	MGR FAA 815728-007	
	ESV:	Bearing [True]: 60.0° to 80.0° Bearing [Mag]: 60.0° to 80.0°				Arc Distance: Out to 80.0 NM Altitude: 5900.0 to 18300.0 ft		
2	SSI FAA 712190-020 SSI [IFPA]	N31° 03' 01.85", W081° 26' 45.47"	4.0 W	40	5.9	109.8	SSI FAA 712190-020	
	ESV:	Bearing [True]: 262.0° to 303.0° Bearing [Mag]: 266.0° to 307.0°				Arc Distance: Out to 65.0 NM Altitude: 5900.0 to 18100.0 ft		

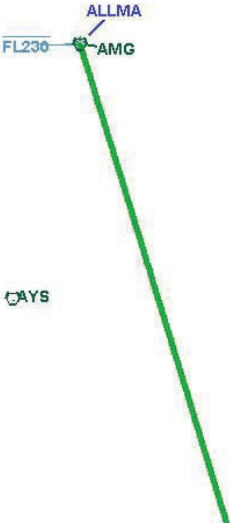
DME DME Assessment Results for ALCRN1 path ALCRN_SNKEM

DME Error



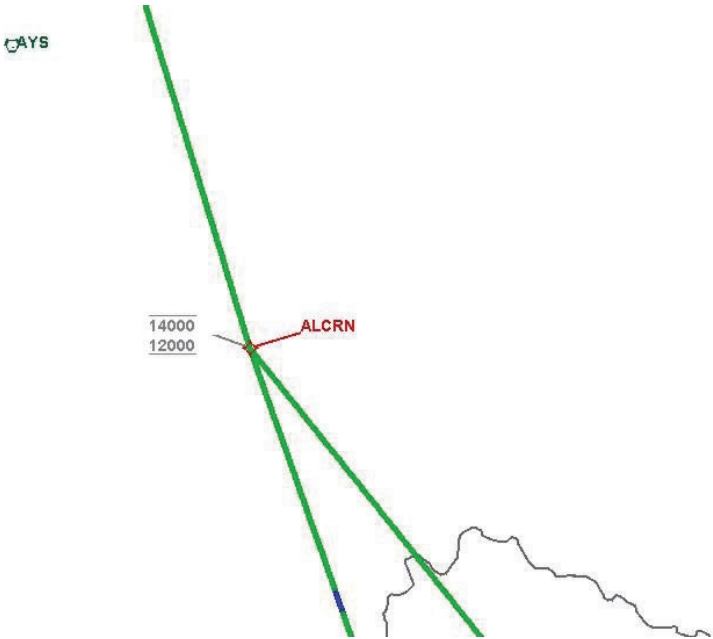
DME DME Assessment Results for ALCRN1 path ALCRN_SNKEM

Graphic Depiction 1



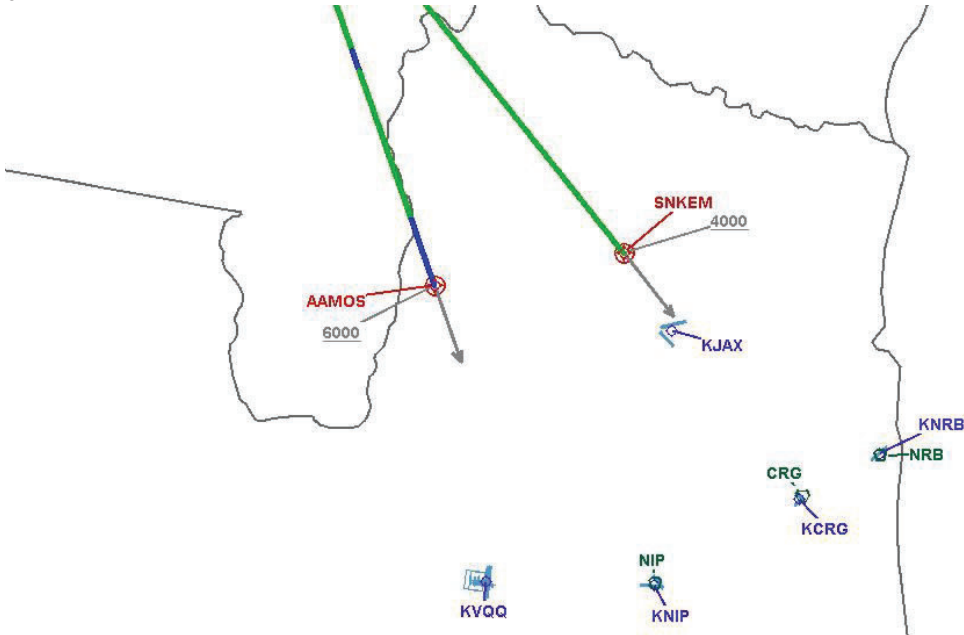
DME DME Assessment Results for ALCRN1 path ALCRN_SNKEM

Graphic Depiction 2



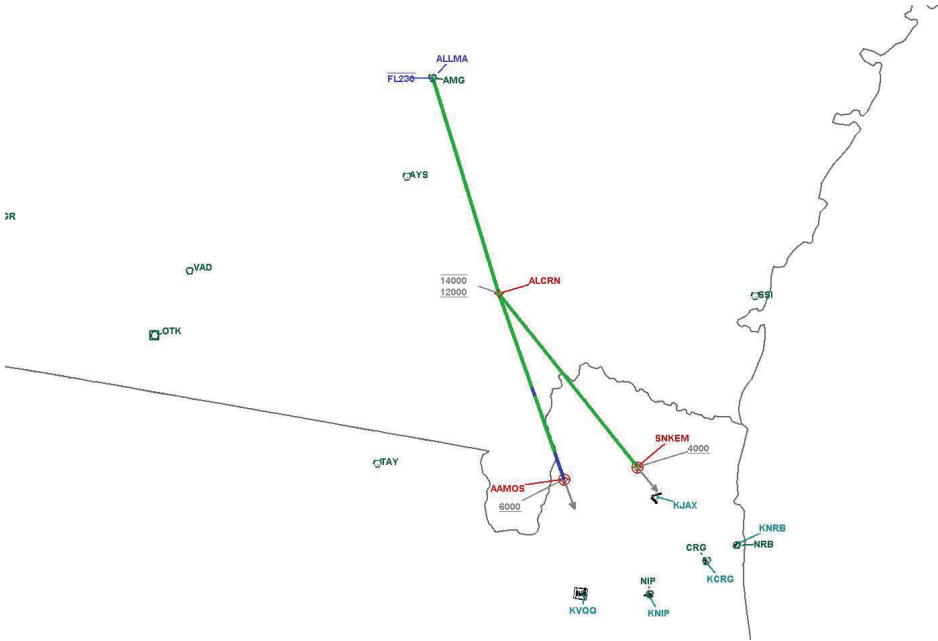
DME DME Assessment Results for ALCRN1 path ALCRN_SNKEM

Graphic Depiction 3



DME DME Assessment Results for ALCRN1 path ALCRN_SNKEM

Graphic Depiction 4



DME DME Assessment Results for ALCRN1 path ALLMA_AAMOS

Results Summary

Flyability:	Completed
DME/DME:	Completed - No Critical DMEs
Name:	Erik J-CTR John
Project File:	C:\Users\Erik J-CTR John\OneDrive - Federal Aviation Administration\Desktop\RNAV Projects\PROJECT FILES\ZJX_ZMA VOR MON\KJAX ALCRN STAR\KJAX ALCRN STAR DME\KJAX ALCRN (RNAV) STAR DME 221118.tgs
Output File:	C:\Users\Erik J-CTR John\OneDrive - Federal Aviation Administration\Desktop\RNAV Projects\PROJECT FILES\ZJX_ZMA VOR MON\KJAX ALCRN STAR\KJAX ALCRN STAR DME\KJAX [IFPA] ALCRN1 20221129_1030 EST\ALLMA_AAMOS\KJAX ALCRN1 RNAV STAR ALLMA AAMOS 20221129_1030 EST.pdf
Procedure Name:	ALCRN1
Software: DmeDmePlugin:	7.0.2
Date/Time:	11/29/2022 10:30 EST
Databases:	DTED 0

Failures

No Failures

Warnings

No Warnings

Informational

No Informational

Notes For Flight Check

None

Flight Plan

Name	Type	Lat/Lon	Altitude (ft)	VNAV Mode	Ground Speed (kts)	Turn Type	Leg Type
ALLMA	WP	N31° 32' 11.14", W082° 30' 28.67"	6000	VNAV	200	FLY_BY	TF
ALCRN	WP	N30° 59' 12.93", W082° 14' 09.03"	6000	VNAV	200	FLY_BY	TF
AAMOS	WP	N30° 30' 53.90", W081° 58' 30.20"	6000	VNAV	200	FLY_OVER	TF

Flyability

Flight Type:	RNAV STAR
Selected Airport:	KJAX [IFPA]
Climb Gradient:	None assigned
Speeds:	200 Ground Speed to 11000 FT
	240 Ground Speed to 18000 FT
	260 Ground Speed to 24000 FT
	340 Ground Speed above 24000 FT
Descent During a Turn:	Allowed
VNAV Mode:	Flight Plan

DME DME Assessment Results for ALCRN1 path ALLMA_AAMOS

DME/DME	
RNP:	RNP 2
Flight Mode:	Manual
Line of Sight (DTED Level 0 Max):	Evaluated
Inertial Drift:	Enabled
Initial Drift:	0.558 NM
INS Drift Rate:	8.0 NM/Hour
Range Mode:	OSV
RNP Edges:	Evaluated
Min DME Range:	3.0 NM
DME Types:	DME, VOR-DME, VORTAC, TACAN
DME Include Angles:	30 to 150
Critical DMEs:	Not Allowed
DoD Facilities:	Included
Foreign Facilities:	Not included
High DMEs:	Included
Low DMEs:	Included
Terminal DMEs:	Included
Flight Check DMEs:	Not selected
Higher Altitudes:	Not Evaluated
Near Maximum Altitude:	Not Evaluated
Automatic ESVs:	Enabled
Disabled DMEs:	None

DME/DME (Continued)										
DMEs Used										
#	Name	Lat/Lon	MAGVAR	Range	Type	Source	Critical	Status	Time	Distance
1	SSI	N31° 03' 01.85", W081° 26' 45.47"	4.0 W	40	L	IFPA	NO	Enabled	54.6 %	54.6 %
2	TAY	N30° 30' 16.70", W082° 33' 10.45"	3.0 W	130	H	IFPA	NO	Enabled	46.7 %	46.7 %
3	CRG	N30° 20' 19.97", W081° 30' 35.74"	3.0 W	130	H	IFPA	NO	Enabled	14.4 %	14.4 %
4	MGR	N31° 04' 56.17", W083° 48' 15.18"	-0.0 E	40	L	IFPA	NO	Enabled	22.5 %	22.5 %
5	NRB	N30° 23' 19.01", W081° 25' 23.08"	6.0 W	40	L	IFPA	NO	Enabled	6.5 %	6.5 %
6	AMG	N31° 32' 11.60", W082° 30' 29.12"	0.0 E	130	H	IFPA	NO	Enabled	54.5 %	54.5 %
7	AYS	N31° 16' 09.93", W082° 33' 23.20"	0.0 E	40	L	IFPA	NO	Enabled	70.3 %	70.3 %

Flight Check DME Selection					
Distance [NM]	Selected DMEs				Alternate
0.0	SSI	AYS	MGR		
3.0	SSI	AYS	MGR	AMG	
15.2	AMG	AYS	SSI		
25.5	SSI	AMG			
30.0	TAY	AYS	SSI	AMG	
36.7	TAY	AYS	AMG		
39.6	TAY	AYS			
51.7					
53.0	TAY	CRG			
56.2	TAY	CRG	NRB		
60.6	TAY	CRG			
62.7					

DME DME Assessment Results for ALCRN1 path ALLMA_AAMOS

Inertial Drift Segments			
#	Start Location	End Location	Length [NM]
1	N30° 44' 48.60", W082° 06' 10.15"	N30° 43' 36.30", W082° 05' 30.21"	1.3321
2	N30° 34' 48.99", W082° 00' 39.50"	N30° 30' 53.90", W081° 58' 30.20"	4.3294

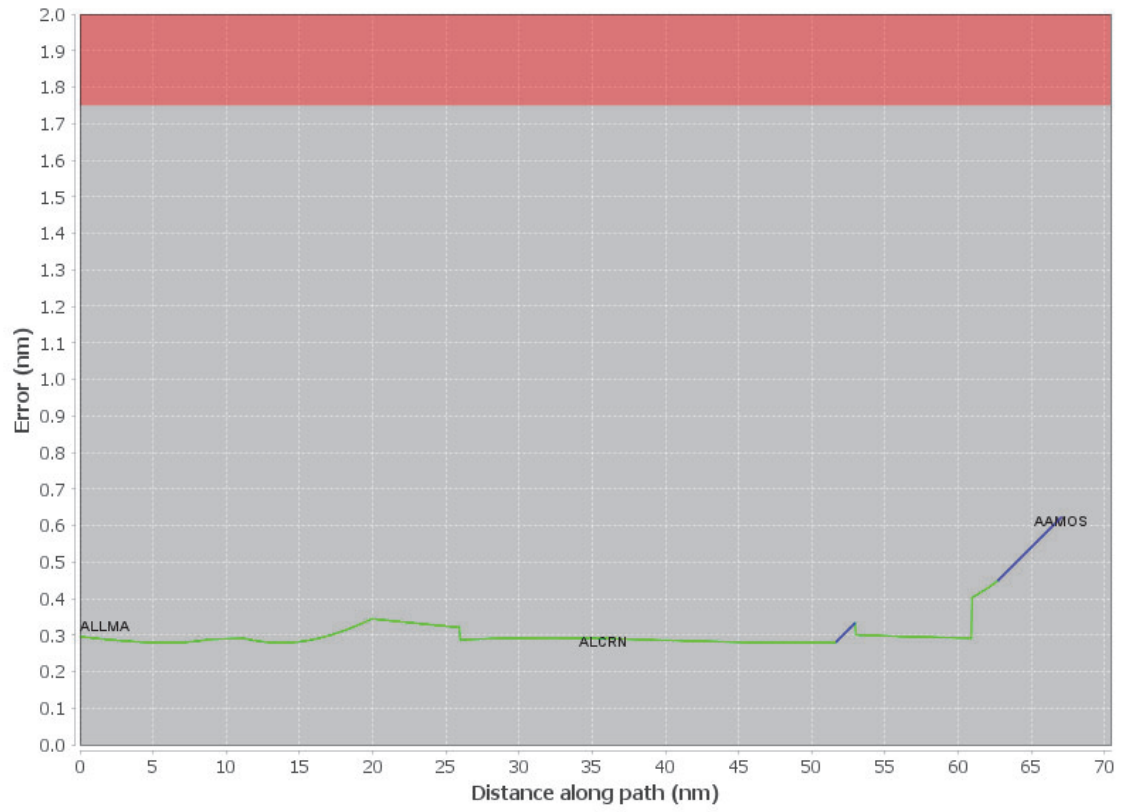
Available DMEs by Waypoints			
Waypoint Before	Waypoint After	DME List	Suggested DMEs
ALLMA	ALCRN	SSI, MGR, AYS, AMG, TAY	
ALCRN	AAMOS	SSI, CRG, AMG, AYS, TAY, NRB	

User Data Files	
#	File Name
1	New Analysis.udt

User DMEs								
#	Name	Lat/Lon	MAGVAR	Range	Elevation [ft]	Frequency	Replaces	Status
1	MGR FAA 815728-007 MGR [IFPA]	N31° 04' 56.17", W083° 48' 15.18"	-0.0 E	40	285.5	null	MGR FAA 815728-007	
ESV:		Bearing [True]: 60.0° to 80.0° Bearing [Mag]: 60.0° to 80.0°				Arc Distance: Out to 80.0 NM Altitude: 5900.0 to 18300.0 ft		
2	SSI FAA 712190-020 SSI [IFPA]	N31° 03' 01.85", W081° 26' 45.47"	4.0 W	40	5.9	109.8	SSI FAA 712190-020	
ESV:		Bearing [True]: 262.0° to 303.0° Bearing [Mag]: 266.0° to 307.0°				Arc Distance: Out to 65.0 NM Altitude: 5900.0 to 18100.0 ft		

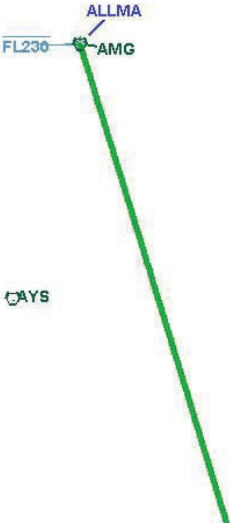
DME DME Assessment Results for ALCRN1 path ALLMA_AAMOS

DME Error



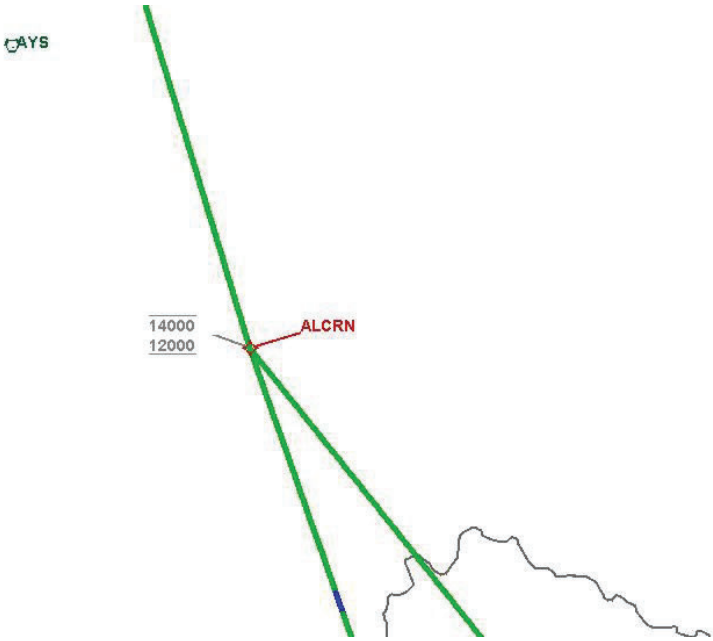
DME DME Assessment Results for ALCRN1 path ALLMA_AAMOS

Graphic Depiction 1



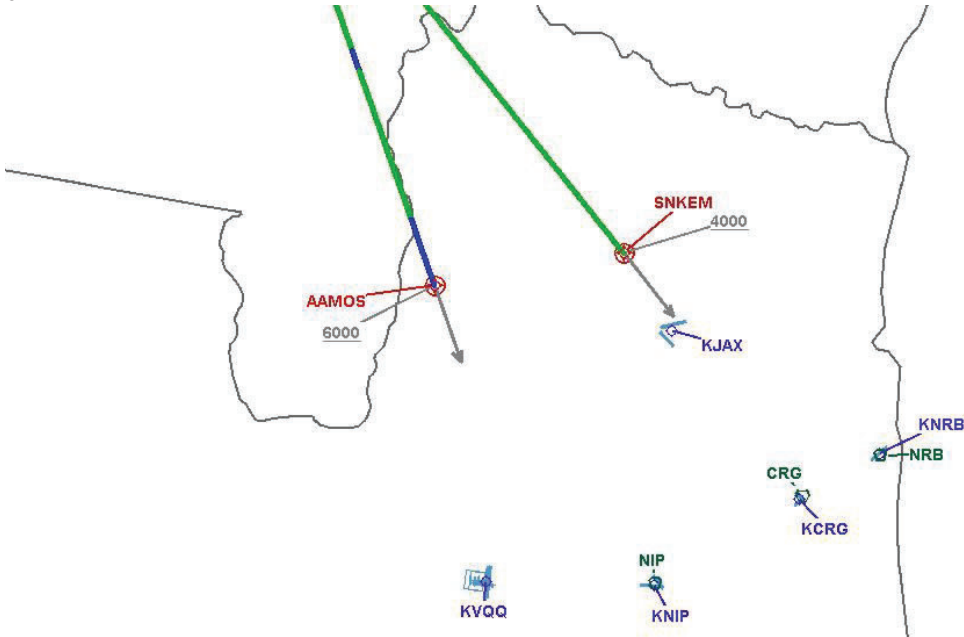
DME DME Assessment Results for ALCRN1 path ALLMA_AAMOS

Graphic Depiction 2



DME DME Assessment Results for ALCRN1 path ALLMA_AAMOS

Graphic Depiction 3



DME DME Assessment Results for ALCRN1 path ALLMA_AAMOS

Graphic Depiction 4

