

Flight Procedures Cover Page	Task Action: FLIGHT CHECK	Task Type: IAP	Estimated Chart Date: 11/27/2025	APWS Task ID: AC59674BBCBF44F8B10C938E429C82DE	APWS Project ID: DCD2253DF8E946B6A92CF89EBE6A66EC
Procedure: RNAV (RNP) Z RWY 34 AMDT 2		Enroute: NO	Specialist: Clark, Jacob		Agreement Number:
Airport ID: KBLI			Airport City: BELLINGHAM		State: WA
Facility ID:	Facility Type:	Flight Inspection Remark Type: New FC Slot			

**Procedure Comments:**

ACTIVE AIRNAV DATA USED FOR KBLI AIRPORT AND RUNWAYS.

WHATCOM VORTAC VOR MON DECOMMISSION.

CONTACT CASIMIR TABAKA, AJV-A432, 405-202-7857.

10/2/25: THIS IS A CORRECTED COPY OF THE FORM APPROVED ON 9/30/25.

1. PBN REQUIREMENTS NOTE: CHANGED FROM "RNP AR APCH - GPS." TO "RNP AR APCH - GPS. FROM PAGMY, OHADO: MIN RNP 0.50. AUTHORIZATION REQUIRED. FROM ISUWU: RF, MIN RNP 0.40".





APP CRS	Rwy Idg	<b>6700</b>
<b>344°</b>	TDZE	<b>171</b>
	Apt Elev	<b>171</b>

**OLD**

# RNAV (RNP) Z RWY 34

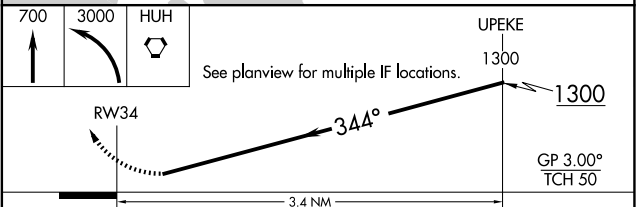
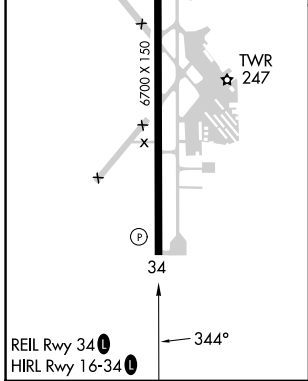
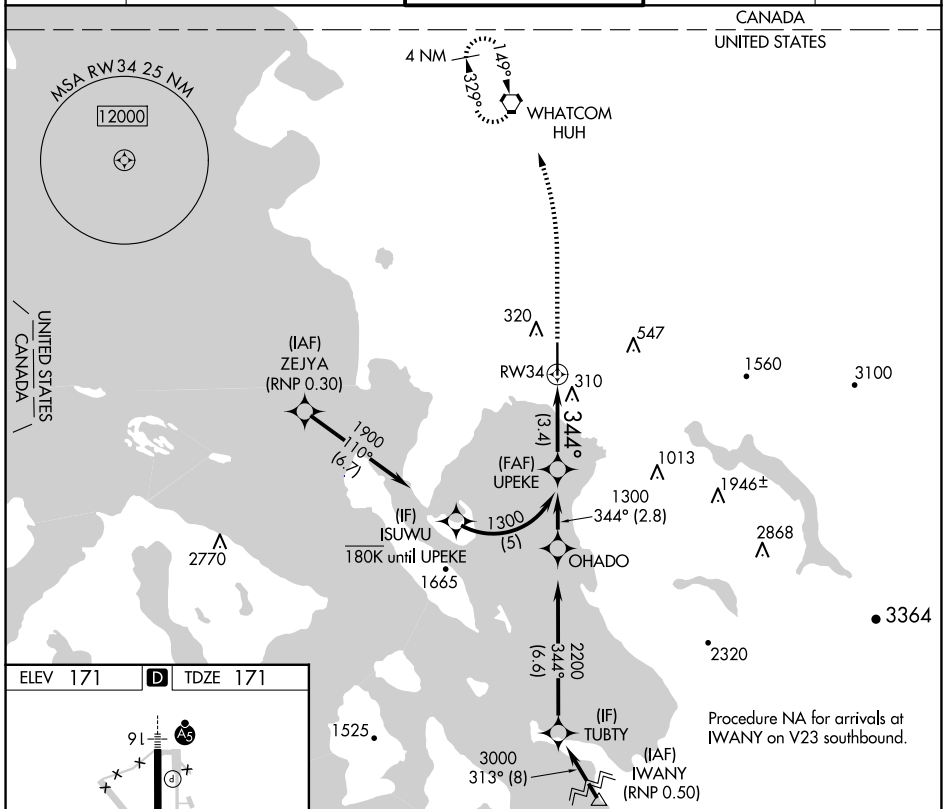
BELLINGHAM INTL (BLI)

RNP AR APCH-GPS.

For uncompensated Baro-VNAV systems, procedure NA below -7°C or above 54°C.

MISSED APPROACH: Climb to 700 then climbing left turn to 3000 direct WHATCOM VORTAC and hold, continue climb-in-hold to 3000.

ATIS	VICTORIA TERMINAL APP CON	BELLINGHAM TOWER ★	GND CON	UNICOM
<b>134.45</b>	<b>132.7 290.8</b>	<b>124.9 (CTAF) 0 379.3</b>	<b>127.4 379.3</b>	<b>122.95</b>



CATEGORY	A	B	C	D
RNP 0.11 DA		463-7/8	292 (300-7/8)	
RNP 0.30 DA		578-1 3/8	407 (500-1 3/8)	

## AUTHORIZATION REQUIRED

NW-1, 20 MAR 2025 to 17 APR 2025

NW-1, 20 MAR 2025 to 17 APR 2025

APP CRS <b>344°</b>	Rwy Ldg TDZE Apt Elev	<b>6700</b> <b>171</b> <b>171</b>
------------------------	-----------------------------	---

# RNAV (RNP) Z RWY 34

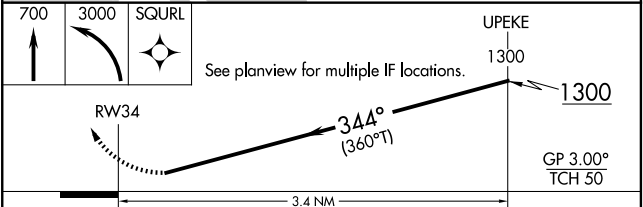
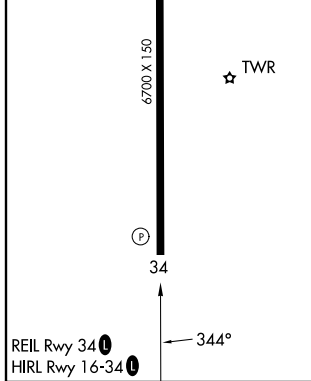
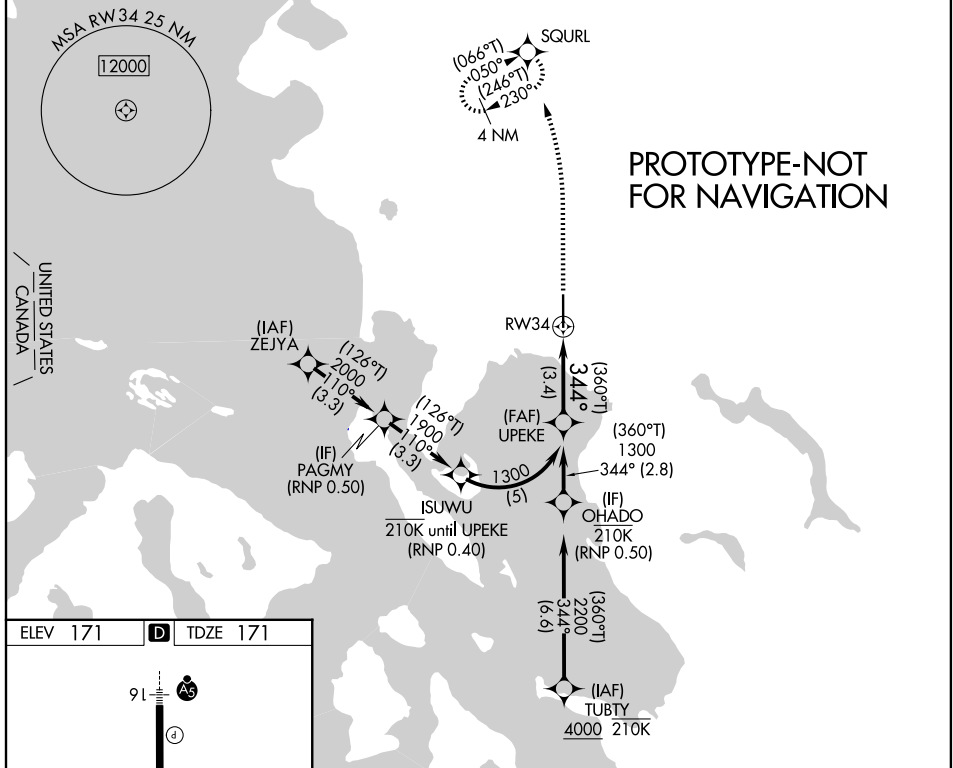
BELLINGHAM INTL (BLI)

RNP AR APCH-GPS.  
 For uncompensated Baro-VNAV systems, procedure NA below -10°C or above 54°C.

MISSED APPROACH: Climb to 700 then climbing left turn to 3000 direct SQURL and hold, continue climb in hold to 3000.

ATIS <b>134.45</b>	VICTORIA TERMINAL APP CON <b>132.7</b>	BELLINGHAM TOWER ★ <b>124.9</b> (CTAF) <b>0 379.3</b>	GND CON <b>127.4 379.3</b>	UNICOM <b>122.95</b>
-----------------------	---	--	-------------------------------	-------------------------

CANADA  
UNITED STATES



CATEGORY	A	B	C	D
RNP 0.11 DA		444-7/8	273 (300-7/8)	
RNP 0.30 DA		577-1 1/8	406 (500-1 1/8)	

**AUTHORIZATION REQUIRED**

AIRPORT ID: KBLI  
AIRPORT NAME: BELLINGHAM INTL  
CITY/STATE: BELLINGHAM/WASHINGTON  
PROC ID: RNAV (RNP) Z RWY 34  
AMDT: 2  
SCALE: 1:100,000  
RNP 0.11

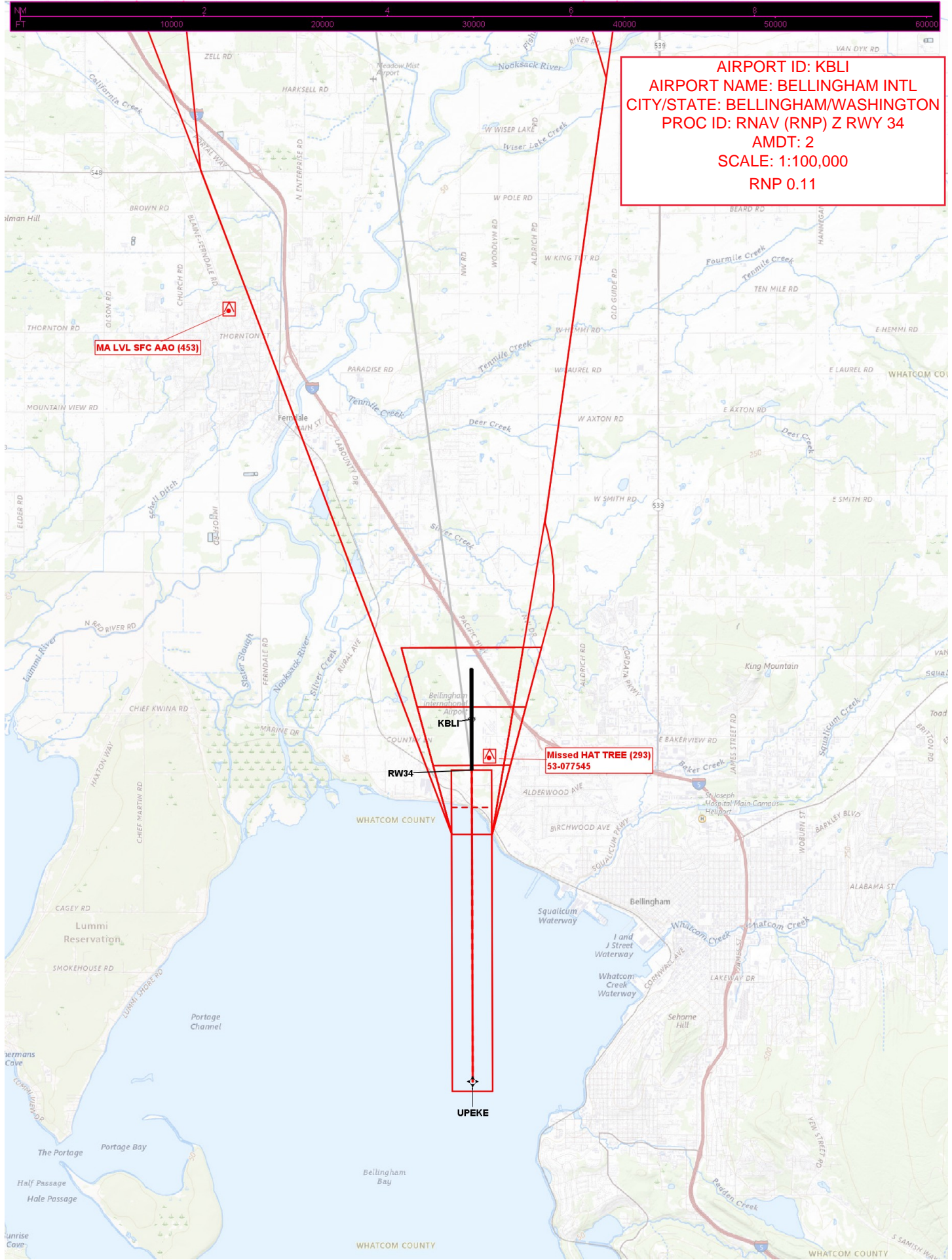
MA LVL SFC AAO (453)

Missed HAT TREE (293)  
53-077545

KBLI

RW34

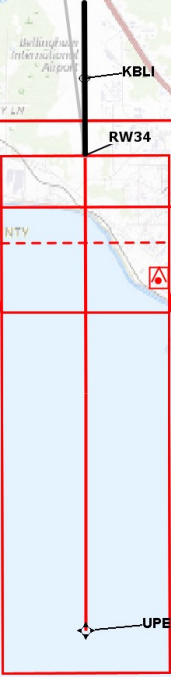
UPEKE



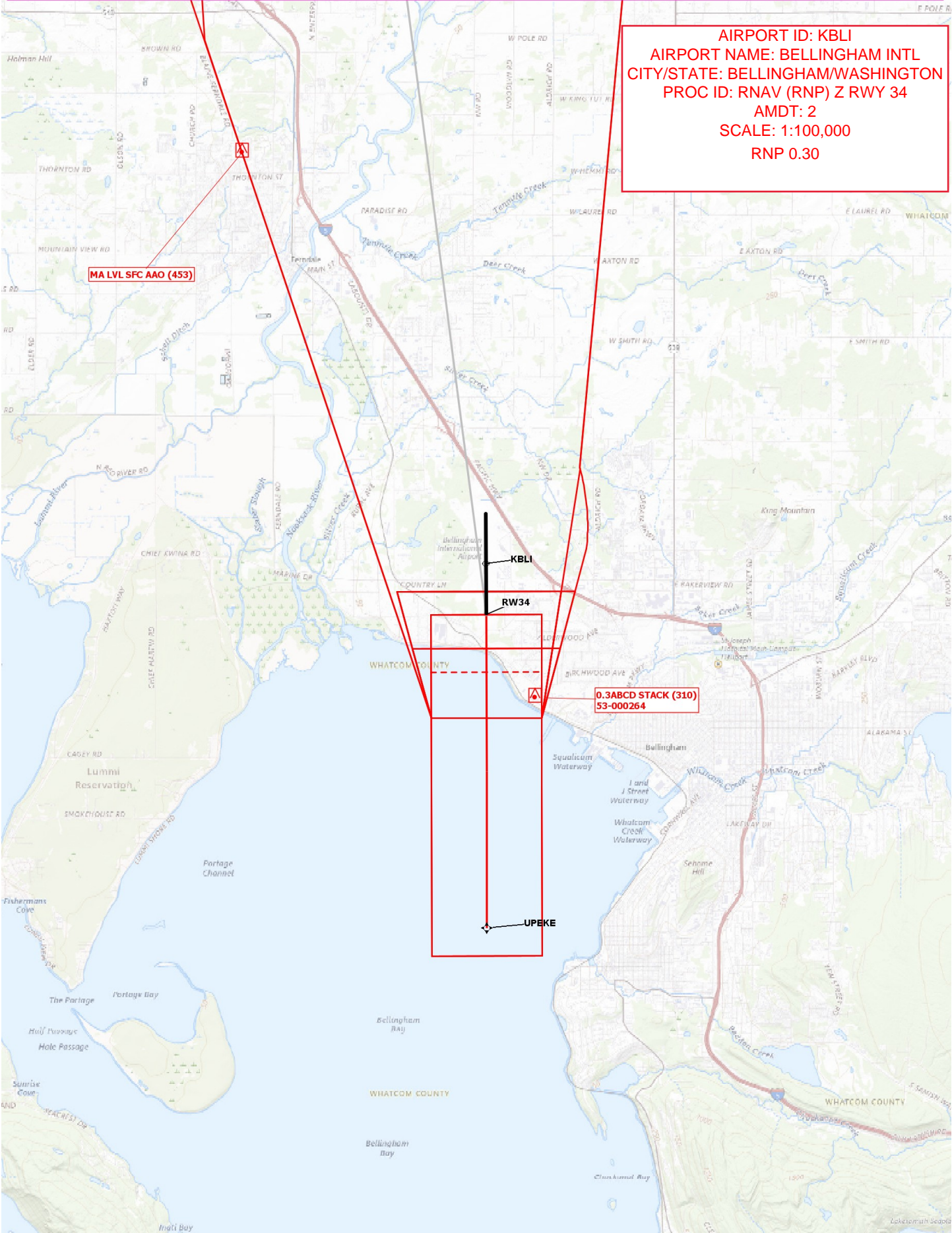


AIRPORT ID: KBLI  
AIRPORT NAME: BELLINGHAM INTL  
CITY/STATE: BELLINGHAM/WASHINGTON  
PROC ID: RNAV (RNP) Z RWY 34  
AMDT: 2  
SCALE: 1:100,000  
RNP 0.30

MA LVL SFC AAO (453)



0.3ABCD STACK (310)  
53-000264



AIRPORT ID: KBLI  
AIRPORT NAME: BELLINGHAM INTL  
CITY/STATE: BELLINGHAM/WASHINGTON  
PROC ID: RNAV (RNP) Z RWY 34  
AMDT: 2  
SCALE: 1:500,000  
IF, FINAL, MA, HOLD

