

Flight Procedures Cover Page	Task Action: P-NOTAM	Task Type: IAP	Estimated Chart Date: 09/03/2026	APWS Task ID: AC5B2AA95DFD4AB4818AAEA387A34031	APWS Project ID: 160CDA27C88947DCBB95041656E4D7BB
Procedure: RNAV (GPS) RWY 6 AMDT 1C		Enroute: NO	Specialist: Johnson, Timothy		Agreement Number:
Airport ID: KFOD			Airport City: FORT DODGE		State: IA
Facility ID:	Facility Type:	Flight Inspection Remark Type:			

**Procedure Comments:**

Visibility Initiative (Garmin) - Update IAP visibility minimums IAW Order 8260.3, Chapter 3, Section 3-3. Visibility Minimums.

PROCESSED IAW TECHNICAL SUPPORT GROUP (AJF-17) MEMO DATED 07/07/2021, SUBJECT: GUIDANCE FOR PROCEDURAL CHANGES REQUIRING FLIGHT INSPECTION/VALIDATION.

CONTACT: CASEY HILL (405) 954-0624.



FORT DODGE, IOWA

AL-976 (FAA)

25219

WAAS CH <b>61015</b> <b>W06A</b>	APP CRS <b>063°</b>	Rwy Ldg TDZE Apt Elev	<b>6547</b> <b>1107</b> <b>1156</b>
--	------------------------	-----------------------------	---


# RNAV (GPS) RWY 6

FORT DODGE RGNL (FOD)

RNP APCH.

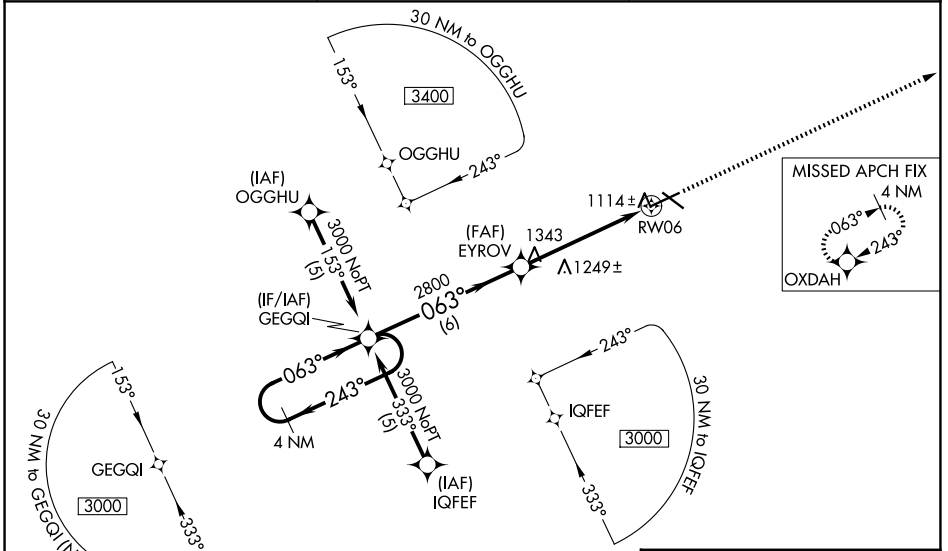
**⚠** Baro-VNAV NA when using Webster City altimeter setting. For uncompensated Baro-VNAV systems, LNAV/VNAV NA below -17°C or above 54°C. VDP NA when using Webster City altimeter setting. When local altimeter setting not received, use Webster City altimeter setting: increase LPV DA to 1349 feet; increase LNAV/VNAV DA to 1567 feet and all Cats visibility ¼ SM; increase all MDAs 60 feet and LNAV Cats C/D and Circling Cat C visibility ¼ SM. For inoperative MALS when using Webster City altimeter setting, increase LPV all Cats visibility to 1 mile.

MALS



MISSED APPROACH:  
Climb to 3000 direct OXDAH and hold.

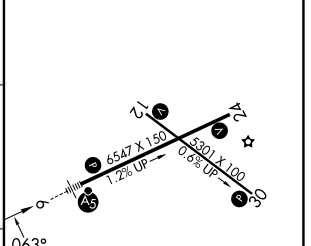
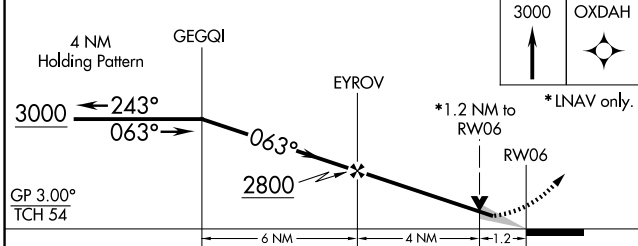
AWOS-3PT <b>118.775</b>	MINNEAPOLIS CENTER <b>134.0 288.3</b>	UNICOM <b>123.0 (CTAF) <b>Ⓛ</b></b>
----------------------------	--	--



NC-3, 19 FEB 2026 to 19 MAR 2026

NC-3, 19 FEB 2026 to 19 MAR 2026

ELEV 1156	<b>D</b> TDZE 1107
-----------	--------------------



CATEGORY	A	B	C	D
LPV DA		1307-½	200 (200-½)	
LNAV/VNAV DA		1525-1	418 (400-1)	
LNAV MDA	1500-½	393 (400-½)		1500-1 393 (400-1)
CIRCLING	1560-1 404 (500-1)	1620-1 464 (500-1)	1740-1½ 584 (600-1½)	2080-3 924 (1000-3)

MIRL Rwy 12-30 **Ⓛ**  
 HIRL Rwy 6-24 **Ⓛ**  
 REIL Rwy 12, 24 and 30 **Ⓛ**

FORT DODGE, IOWA  
Amdt 1B 20MAY21

42°33'N-94°12'W

## FORT DODGE RGNL (FOD) RNAV (GPS) RWY 6