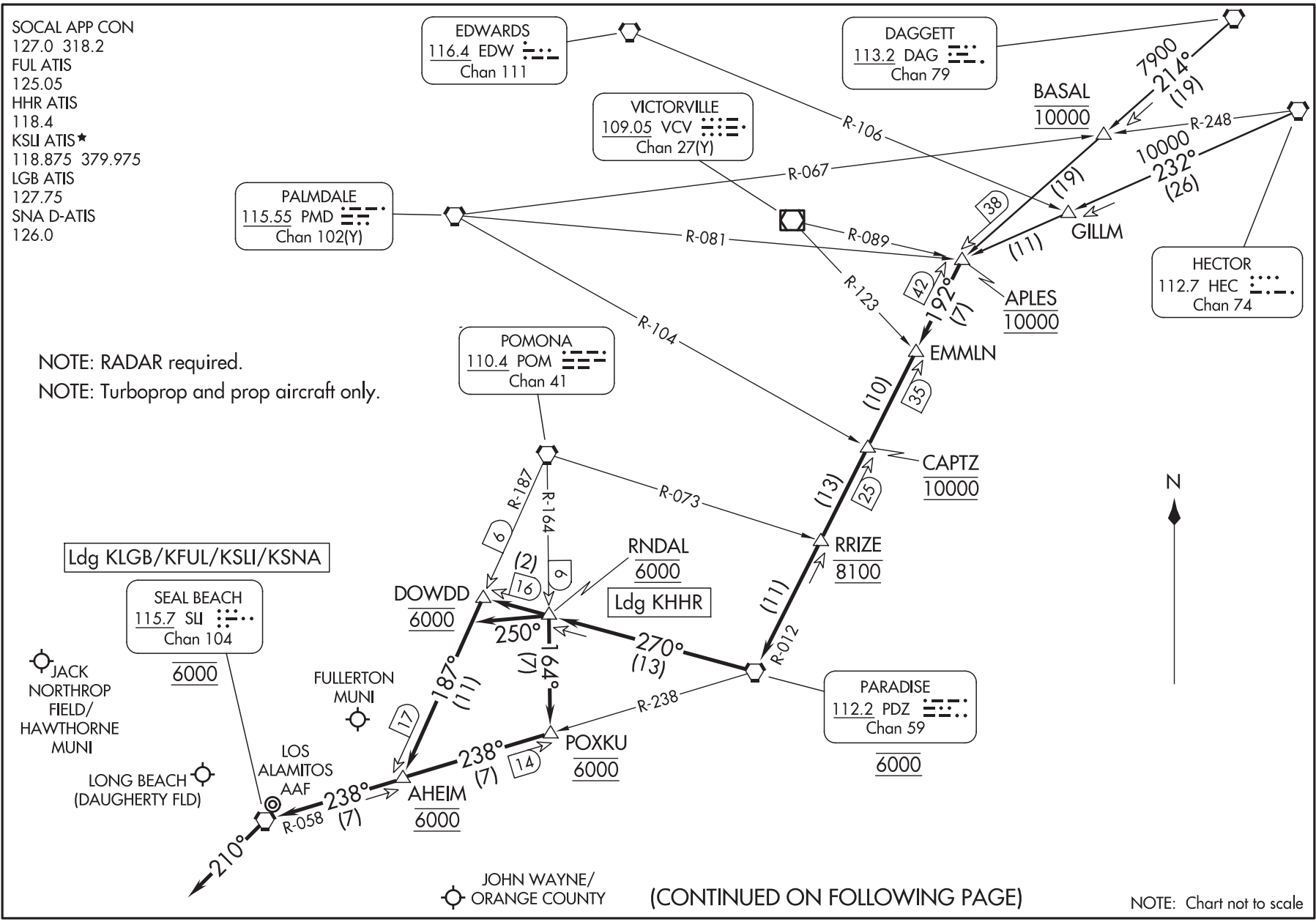


Flight Procedures Cover Page	Task Action: Abbreviated Amendment	Task Type: STAR	Estimated Chart Date: 01/22/2026	APWS Task ID: AC98DE626D4347C79E24EF47F68D24DA	APWS Project ID: CC647041324B4BF4A65A415F976DECB3
Procedure: STAR EMLN TWO, HAWTHORNE, CA		Enroute: YES	Specialist: Dudzinski, Lisa		Agreement Number:
Airport ID: KHHH			Airport City: HAWTHORNE		State: CA
Facility ID:	Facility Type:	Flight Inspection Remark Type:			
<div>Procedure Comments:</div> <div>PROCESSESED IAW TECHNICAL SUPPORT GROUP (AJF-17) MEMO DATED 07/07/2021, SUBJECT: GUIDANCE FOR PROCEDURAL CHANGES REQUIRING FLIGHT INSPECTION / VALIDATION.</div> <div>Active Data Used.</div> <div>Amend EMLN ONE arrival for HHR to have aircraft departing RNDAL heading 235 versus published heading of 250.</div> <div>Raised MOCA to 7800 on the DAGGETT Transition.</div> <div>Contact: Allan Will Training Sub Team Manager AJV-A33 405-954-6103</div> <div>07/21/2025</div> <div>QUALITY 14 CHECKED</div> <div>QUALITY 41 CHECKED</div>					

NOTE: Chart not to scale

(CONTINUED ON FOLLOWING PAGE)

SW-3, 12 JUN 2025 to 10 JUL 2025



NOTE: RADAR required.
NOTE: Turboprop and prop aircraft only.

SOCAL APP CON
127.0 318.2
FUL ATIS
125.05
HHR ATIS
118.4
KSLI ATIS★
118.875 379.975
LGB ATIS
127.75
SNA D-ATIS
126.0

OLD

ARRIVAL ROUTE DESCRIPTION

DAGGETT TRANSITION (DAG.EMMLN1): From over DAG VORTAC on DAG R-214 to APLES. Thence. . . .
HECTOR TRANSITION (HEC.EMMLN1): From over HEC VORTAC on HEC R-232 to APLES. Thence. . . .

LANDING KLGB/KFUL/KSL: From over APLES on PARADISE VORTAC (PDZ) R-012 to cross CAPTZ at 10000, then on PDZ R-012 to cross RRIZE at 8100, then on PDZ R-012 to cross PDZ VORTAC at 6000, then on PDZ R-270 to cross DOWDD at 6000, then on POMONA VORTAC (POM) R-187 to cross AHEIM at 6000, then on SEAL BEACH VORTAC (SLI) R-058 to cross SLI VORTAC at 6000.

LANDING KLGB: From over SLI VORTAC, fly heading 210°, expect RADAR vectors to final approach course.

LANDING KFUL: From over SLI VORTAC, expect VOR-A approach.

LANDING KSL: From over SLI VORTAC, expect VOR or TACAN RWY 22L approach or RADAR vectors to final approach course.

LANDING KHR: From over APLES on PARADISE VORTAC (PDZ) R-012 to cross CAPTZ at 10000, then on PDZ R-012 to cross RRIZE at 8100, then on PDZ R-012 to cross PDZ VORTAC at 6000, then on PDZ R-270 to cross RNDAL at 6000, then fly heading 250°. Expect RADAR vectors to final approach course.

LANDING KSNA: From over APLES on PARADISE VORTAC (PDZ) R-012 to cross CAPTZ at 10000, then on PDZ R-012 to cross RRIZE at 8100, then on PDZ R-012 to cross PDZ VORTAC at 6000, then on PDZ R-270 to cross RNDAL at 6000, then on POM R-164 to cross POXKU at 6000, then on SLI R-058 to cross SLI VORTAC at 6000. Expect RADAR vectors to final approach course.