

Flight Procedures Cover Page	Task Action: FLIGHT CHECK	Task Type: IAP	Estimated Chart Date: 05/14/2026	APWS Task ID: ACB58D19A5AE4B2A85F7F90886649877	APWS Project ID: CF174BBE67764B0998B83FC6C4569886
Procedure: ILS OR LOC RWY 17L AMDT 14		Enroute: NO	Specialist: Weston, Daniel		Agreement Number:
Airport ID: KCNW			Airport City: WACO		State: TX
Facility ID: CNW	Facility Type: ILS	Flight Inspection Remark Type: New FC Slot			

Procedure Comments:
ACTIVE AIRNAV DATA USED.

ESVS: (1): WACO (I-CNW) LOC (1).

CONTACT RAKE MCGRAW 405-954-8711.



ESV Details

Originating Office :AJV-A422		Airspace Docket Number :		Request Type :Establish		
Facility Data						
Chart Name:FOXOR, KCNW LS OR LOC RWY 17L		City:WACO		Ident:CNW		State:TX
Type/Class: LOC		Frequency: M110.7		Reference Number: 25112270		
Extended Service Volume Data: (Requesting Officer)						
ESV ID	Radial 1	Radial 2	Distance	Minimum Altitude	Maximum Altitude	
FAA 784331 - 002	354		22	23	49	
Requirement: FOXOR, KCNW LS OR LOC RWY 17L						
Signature:Weston Daniel		Routing Symbol:AJV-A422			Date:11/24/2025	
Extended Service Volume Data: (FMO)						
ESV ID	Radial 1	Radial 2	Distance	Minimum Altitude	Maximum Altitude	Action Type
FAA 784331 - 002	354		22	23	49	APPROVE
Requirement/Remarks: FOXOR, KCNW LS OR LOC RWY 17LAPPROVED. FREQ. PROTECTION & FIELD STRENGTH. PENDING FLIGHT INSPECT @ REQUIRED. DIST. & MIN ALT..						
Signature:Bowers Michael		Routing Symbol:			Date:11/25/2025	
Extended Service Volume Data: (Super FMO)						
ESV ID	Radial 1	Radial 2	Distance	Minimum Altitude	Maximum Altitude	Action Type
FAA 784331 - 002	354		22	23	49	APPROVE
Requirement/Remarks: FOXOR, KCNW LS OR LOC RWY 17LAPPROVED. FREQ. PROTECTION & FIELD STRENGTH. PENDING FLIGHT INSPECT @ REQUIRED. DIST. & MIN ALT..						
Signature:Hughes Dennis		Routing Symbol:			Date:11/25/2025	
Extended Service Volume Data: (FIFO)						
ESV ID	Radial 1	Radial 2	Distance	Minimum Altitude	Maximum Altitude	Action Type
FAA 784331 - 002	354					
Requirement/Remarks:						
Signature:		Routing Symbol:			Date:	

LOC I-CNW 110.7	APP CRS 174°	Rwy Ldg 8600
		TDZE 470
		Apt Elev 470

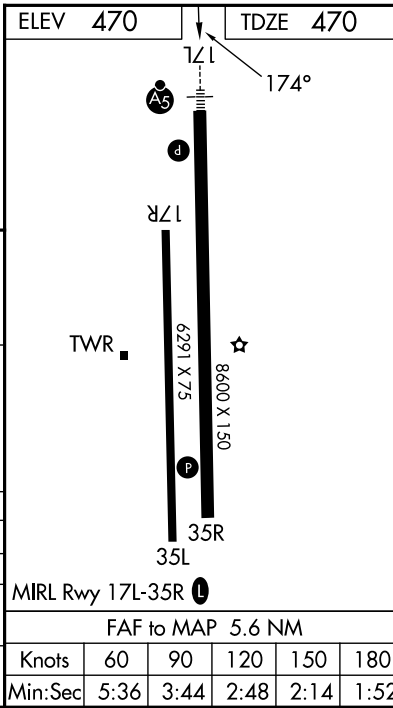
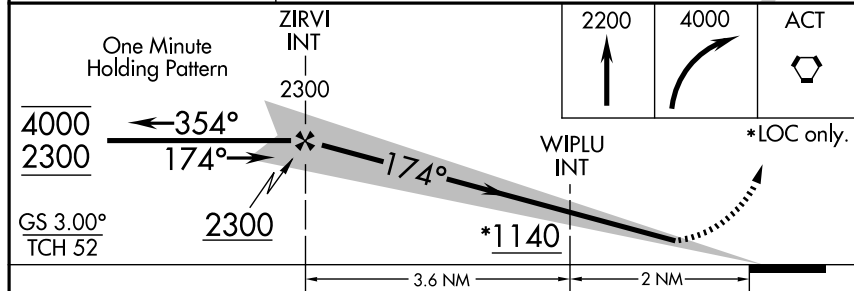
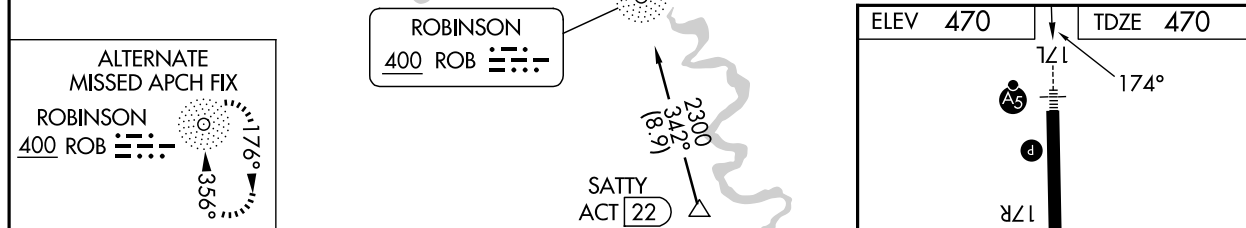
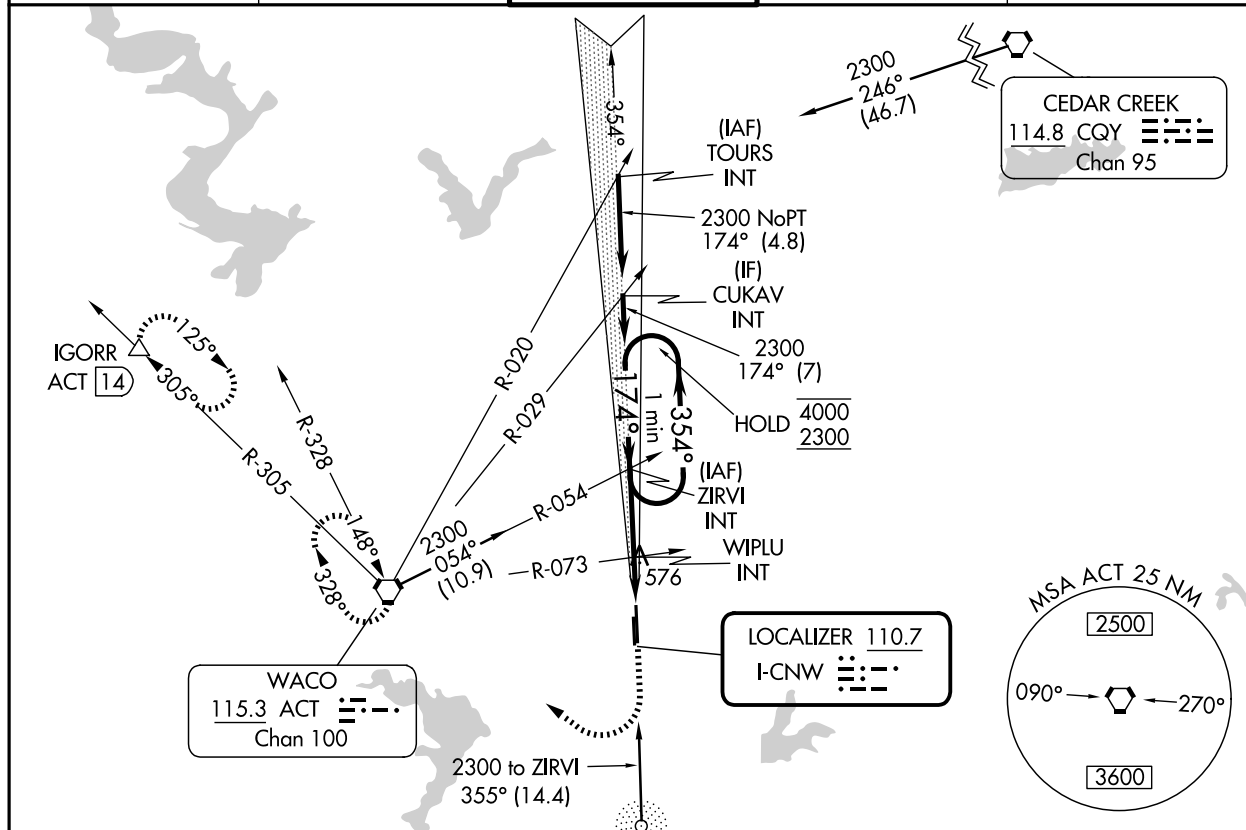
OLD

ILS or LOC RWY 17L

TSTC WACO (CNW)

<p>NA ASR</p> <p>For inop ALS, increase S-ILS 17L Cat E visibility to 3/4 SM, and S-LOC 17L Cat E to 1/8 SM.</p>	<p>MALS/R</p> <p>MISSED APPROACH: Climb to 2200 then climbing right turn to 4000 direct ACT VORTAC and hold. (TACAN aircraft continue on ACT VORTAC R-305 to IGORR /ACT 14 DME and hold SE, RT, 305° inbound)</p>
---	---

AWOS-3PT 134.225	WACO APP CON ★ 127.65 227.125	TSTC TOWER ★ 124.0 (CTAF) 255.7	GND CON 121.70	UNICOM 122.95
----------------------------	---	---	--------------------------	-------------------------



CATEGORY	A	B	C	D	E
S-ILS 17L	670-1/2 200 (200-1/2)				
S-LOC 17L	860-1/2 390 (400-1/2)		860-5/8 390 (400-5/8)		
CIRCLING	940-1 470 (500-1)	1040-1 570 (600-1)	1040-1 1/2 570 (600-1 1/2)	1120-2 650 (700-2)	1180-2 1/2 710 (800-2 1/2)

SC-3, 30 OCT 2025 to 27 NOV 2025

SC-3, 30 OCT 2025 to 27 NOV 2025