

DME DME Assessment Results for MAJIC1 path AIROW_CAATT

Results Summary

Flyability:	Completed
DME/DME:	Completed - No Critical DMEs
Name:	Breanne M-CTR Sparac
Project File:	C:\Users\Breanne M-CTR Sparac\OneDrive - Federal Aviation Administration\Documents\RNAV PROJECTS\CLT RUNWAY PROJECT\NEW RNAV PROCEDURES\9.3.2026\MAJIC1 STAR\DME\KCLT MAJIC1 (RNAV) STAR DME 28 AUG 2025_FINAL.tgs
Output File:	C:\Users\Breanne M-CTR Sparac\OneDrive - Federal Aviation Administration\Documents\RNAV PROJECTS\CLT RUNWAY PROJECT\NEW RNAV PROCEDURES\9.3.2026\MAJIC1 STAR\DME\KCLT [IFPA] MAJIC1 20250904_1331 EDT\AIROW_CAATT\KCLT MAJIC1 RNAV STAR AIROW CAATT 20250904_1331 EDT.pdf
Procedure Name:	MAJIC1
Software: DmeDmePlugin:	7.5.1
Date/Time:	09/04/2025 13:31 EDT
Databases:	MITRE 3DEP 3 arcsec

Failures

No Failures

Warnings

No Warnings

Informational

No Informational

Notes For Flight Check

None

Flight Plan

Name	Type	Lat/Lon	Altitude (ft)	VNAV Mode	Ground Speed (kts)	Turn Type	Leg Type
AIROW	WP	N37° 14' 48.69", W079° 13' 47.48"	13000	VNAV	240	FLY_BY	TF
KELLS	WP	N36° 35' 10.19", W079° 47' 10.20"	13000	VNAV	240	FLY_BY	TF
MAYOS	WP	N36° 19' 35.65", W079° 59' 47.29"	13000	VNAV	240	FLY_BY	TF
MAJIC	WP	N35° 48' 42.89", W080° 26' 09.99"	9000	VNAV	200	FLY_BY	TF
SUDSY	WP	N35° 44' 34.64", W080° 29' 37.66"	8500	VNAV	200	FLY_BY	TF
CAATT	WP	N35° 16' 56.00", W080° 50' 14.48"	3000	VNAV	200	FLY_OVER	TF

Flyability

Flight Type:	RNAV_STAR
Selected Airport:	KCLT [IFPA]
Climb Gradient:	None assigned
Speeds:	200 Ground Speed to 11000 FT
	240 Ground Speed to 18000 FT
	260 Ground Speed to 24000 FT
	340 Ground Speed above 24000 FT
Descent During a Turn:	Allowed
VNAV Mode:	Flight Plan

DME DME Assessment Results for MAJIC1 path AIROW_CAATT

DME/DME	
RNP:	RNP 2
Flight Mode:	Manual
Line of Sight (DTED Level 0 Max):	Evaluated
Inertial Drift:	Enabled
Initial Drift:	0.558 NM
INS Drift Rate:	8.0 NM/Hour
Range Mode:	OSV
RNP Edges:	Evaluated
Min DME Range:	3.0 NM
DME Types:	DME, VOR-DME, VORTAC, TACAN
DME Include Angles:	30 to 150
Critical DMEs:	Not Allowed
DoD Facilities:	Not included
Foreign Facilities:	Not included
High DMEs:	Included
Low DMEs:	Included
Terminal DMEs:	Included
Flight Check DMEs:	Not selected
Higher Altitudes:	Not Evaluated
Near Maximum Altitude:	Not Evaluated
Automatic ESVs:	Not enabled
Disabled DMEs:	None

DME/DME (Continued)										
DMEs Used										
#	Name	Lat/Lon	MAGVAR	Range	Type	Source	Critical	Status	Time	Distance
1	GSO	N36° 02' 44.49", W079° 58' 34.94"	3.0 W	130	H		NO	Enabled	79.2 %	81.5 %
2	RDU	N35° 52' 21.08", W078° 47' 00.03"	9.0 W	130	H		NO	Enabled	4.7 %	5 %
3	CTF	N34° 39' 01.79", W080° 16' 29.70"	3.0 W	130	DH		NO	Enabled	53.9 %	54.8 %
4	LIB	N35° 48' 41.84", W079° 36' 45.33"	3.0 W	40	L		NO	Enabled	29.3 %	30.8 %
5	BZM	N35° 52' 07.87", W081° 14' 25.90"	6.0 W	130	H		NO	Enabled	10.4 %	9.1 %
6	ROA	N37° 20' 36.47", W080° 04' 13.43"	4.0 W	40	L		NO	Enabled	17.8 %	18.8 %
7	SBV	N36° 40' 30.14", W079° 00' 52.20"	5.0 W	40	L		NO	Enabled	31.5 %	33.1 %
8	SDZ	N35° 12' 55.73", W079° 35' 16.57"	3.0 W	40	L		NO	Enabled	7.5 %	6.8 %
9	PSK	N37° 05' 15.67", W080° 42' 46.38"	6.0 W	130	H		NO	Enabled	18.4 %	19.4 %
10	LYH	N37° 15' 16.48", W079° 14' 10.97"	5.0 W	40	L		NO	Enabled	23.7 %	24.9 %
11	CLT	N35° 11' 25.70", W080° 57' 07.18"	5.0 W	40	L		NO	Enabled	38.3 %	38 %

DME DME Assessment Results for MAJIC1 path AIROW_CAATT

Flight Check DME Selection						
Distance [NM]	Selected DMEs					Alternate
0.0	ROA	SBV	GSO			
4.3	ROA	LYH	GSO	SBV		
26.6	GSO	SBV	LYH			
39.6	GSO	SBV				
40.2	GSO	SBV	CTF			
44.4	PSK	GSO	SBV	CTF		
45.7	PSK	GSO	SBV	RDU	CTF	
46.9	PSK	GSO	RDU	CTF		
52.8	PSK	GSO	CTF			
58.9	CLT	PSK	GSO	LIB	CTF	
65.7	CLT	PSK	LIB	CTF		
67.4	CLT	PSK	LIB	GSO	CTF	
71.8	CLT	LIB	GSO	CTF		
96.4	LIB	CTF	GSO			
102.5	CLT	SDZ	GSO	CTF		
102.9	SDZ	GSO	CTF			
109.3	SDZ	CLT	GSO	CTF		
112.1	GSO	CTF	CLT			
112.4	CLT	BZM	GSO	CTF		
117.0	CLT	BZM	CTF			
117.7	CLT	BZM				
120.0						
124.6	CLT	BZM				
130.1						

Inertial Drift Segments			
#	Start Location	End Location	Length [NM]
1	N35° 35' 07.92", W080° 36' 42.15"	N35° 31' 08.58", W080° 39' 40.83"	4.6658
2	N35° 26' 29.24", W080° 43' 08.93"	N35° 16' 56.00", W080° 50' 14.48"	11.1645

Available DMEs by Waypoints			
Waypoint Before	Waypoint After	DME List	Suggested DMEs
AIROW	KELLS	GSO, RDU, CTF, ROA, SBV, PSK, LYH	
KELLS	MAYOS	GSO, RDU, CTF, LIB, PSK, CLT	
MAYOS	MAJIC	GSO, LIB, CTF, SDZ, PSK, CLT	
MAJIC	SUDSY	GSO, CTF, SDZ	
SUDSY	CAATT	GSO, CTF, BZM, SDZ, CLT	

DME DME Assessment Results for MAJIC1 path AIROW_CAATT

User Data Files

#	File Name
	None

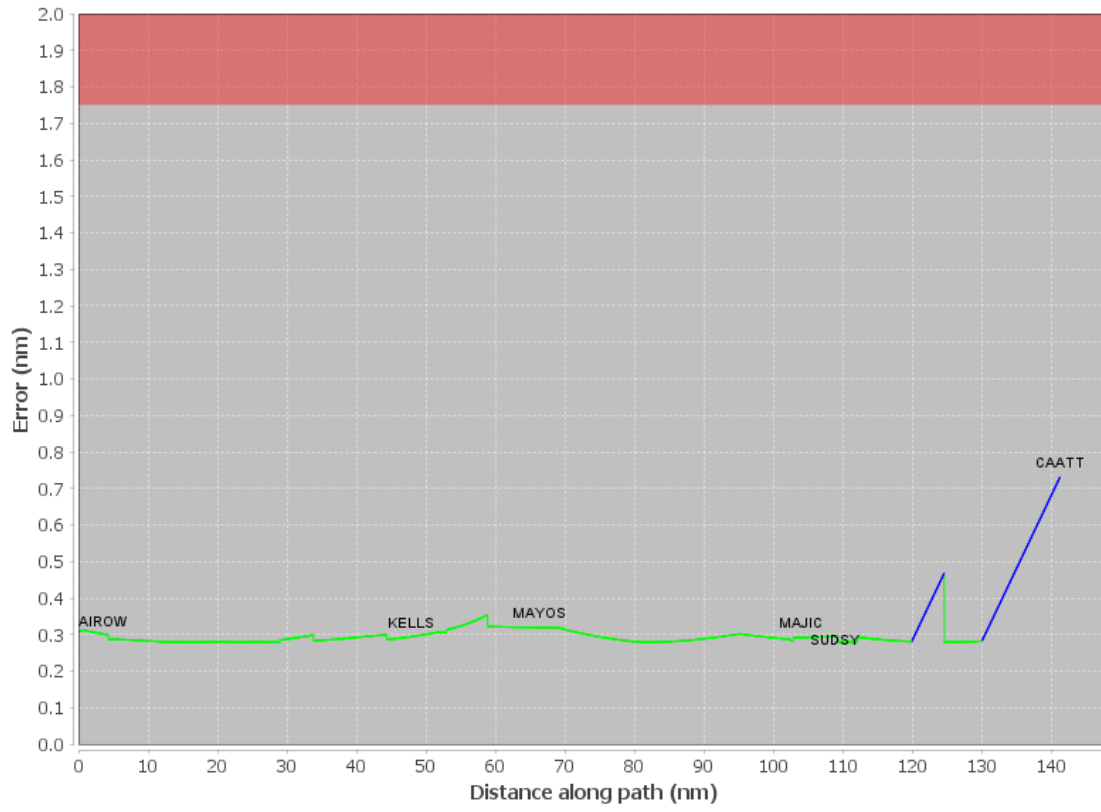
None

User DMEs

#	Name	Lat/Lon	MAGVAR	Range	Elevation [ft]	Frequency	Replaces	Status
1	CLT FAA 861274-26 CLT	N35° 11' 25.70", W080° 57' 07.18"	5.0 W	40	758.7	115.0	CLT FAA 861274-26	
	ESV:	Bearing [True]: 29.0° to 39.0° Bearing [Mag]: 34.0° to 44.0°				Arc Distance: Out to 90.0 NM Altitude: 5000.0 to 31000.0 ft		
2	SDZ FAA 704009-24 SDZ	N35° 12' 55.73", W079° 35' 16.57"	3.0 W	40	588	111.8	SDZ FAA 704009-24	
	ESV:	Bearing [True]: 301.0° to 313.0° Bearing [Mag]: 304.0° to 316.0°				Arc Distance: Out to 85.0 NM Altitude: 6900.0 to 20000.0 ft		
3	ESV ROA [IFPA] ROA	N37° 20' 36.47", W080° 04' 13.43"	4.0 W	40	3071.9	109.4	ESV ROA [IFPA]	
	ESV:	Bearing [True]: 91.0° to 136.0° Bearing [Mag]: 95.0° to 140.0°				Arc Distance: Out to 50.0 NM Altitude: 11500.0 to 18500.0 ft		
4	GSO FAA 698207-54 GSO	N36° 02' 44.49", W079° 58' 34.94"	3.0 W	130	907.9	116.2	GSO FAA 698207-54	
	ESV:	Bearing [True]: 162.0° to 61.0° Bearing [Mag]: 165.0° to 64.0°				Arc Distance: Out to 113.0 NM Altitude: 11000.0 to 18000.0 ft		
5	SBV FAA 683652-42 SBV	N36° 40' 30.14", W079° 00' 52.20"	5.0 W	40	520.1	110.4	SBV FAA 683652-42	
	ESV:	Bearing [True]: 198.0° to 210.0° Bearing [Mag]: 203.0° to 215.0°				Arc Distance: Out to 61.0 NM Altitude: 3500.0 to 12000.0 ft		
6	PSK FAA 760655-6 PSK	N37° 05' 15.67", W080° 42' 46.38"	6.0 W	130	2127.2	116.8	PSK FAA 760655-6	
	ESV:	Bearing [True]: 120.0° to 163.0° Bearing [Mag]: 126.0° to 169.0°				Arc Distance: Out to 68.0 NM Altitude: 10000.0 to 16700.0 ft		
7	RDU FAA 694151-40 RDU	N35° 52' 21.08", W078° 47' 00.03"	9.0 W	130	429.2	117.2	RDU FAA 694151-40	
	ESV:	Bearing [True]: 307.0° to 314.0° Bearing [Mag]: 316.0° to 323.0°				Arc Distance: Out to 88.0 NM Altitude: 9900.0 to 15000.0 ft		

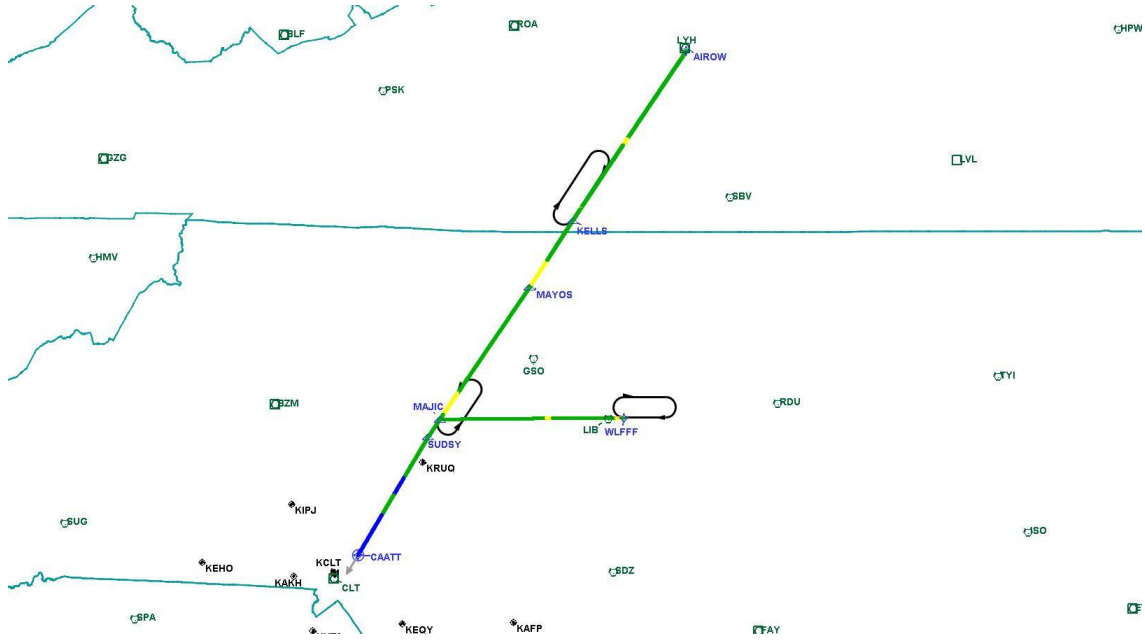
DME DME Assessment Results for MAJIC1 path AIROW_CAATT

DME Error



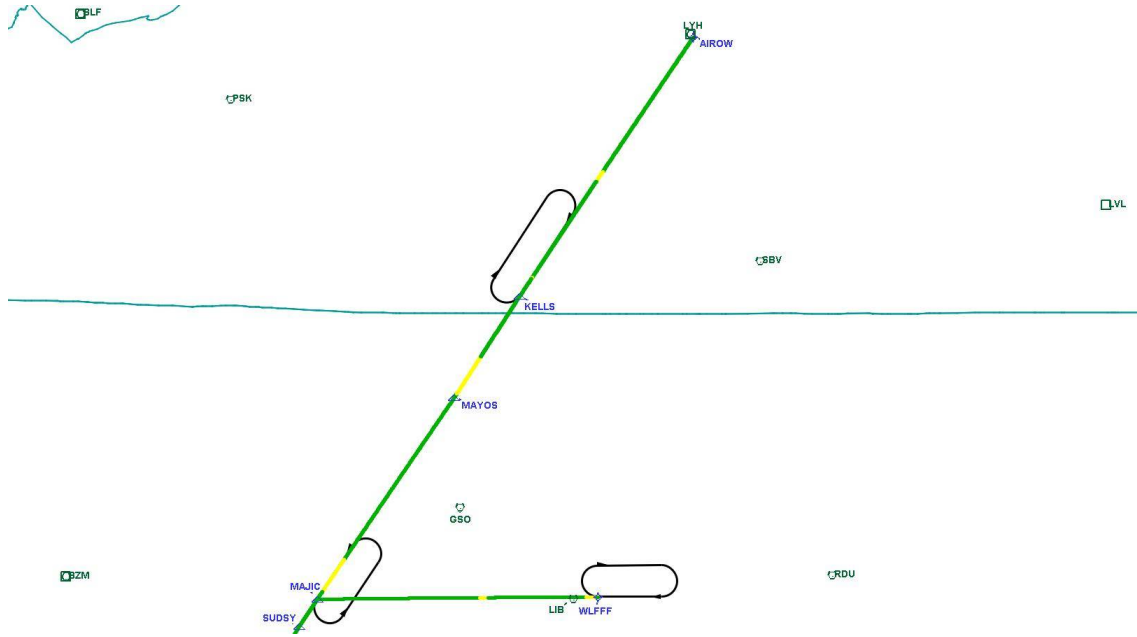
DME DME Assessment Results for MAJIC1 path AIROW_CAATT

Graphic Depiction 1



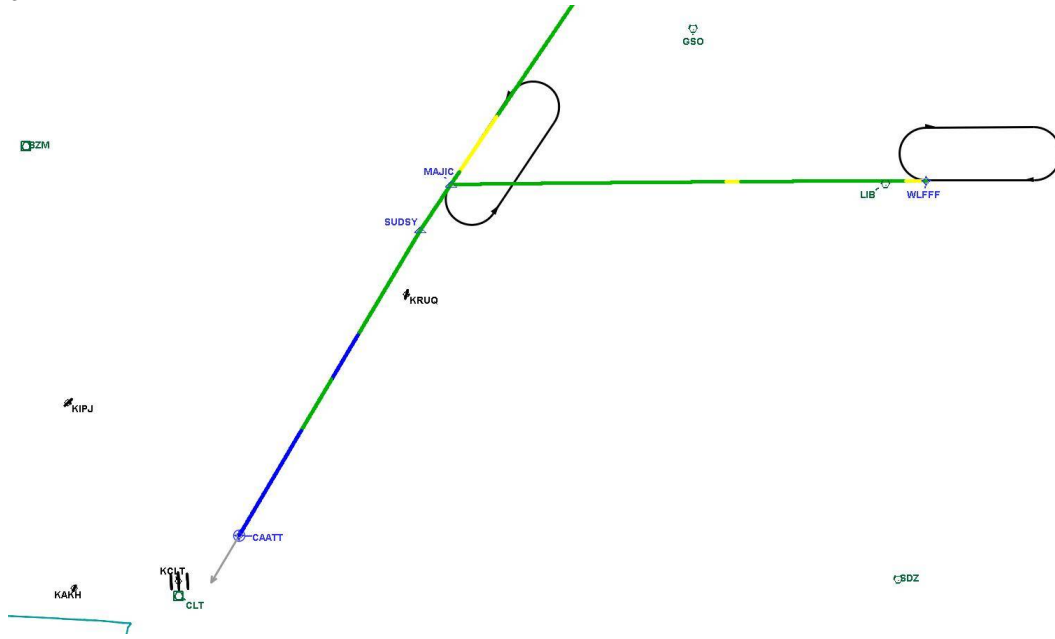
DME DME Assessment Results for MAJIC1 path AIROW_CAATT

Graphic Depiction 2



DME DME Assessment Results for MAJIC1 path AIROW_CAATT

Graphic Depiction 3



DME DME Assessment Results for MAJIC1 path WLFFF_MAJIC

Results Summary

Flyability:	Completed
DME/DME:	Completed - No Critical DMEs
Name:	Breanne M-CTR Sparac
Project File:	C:\Users\Breanne M-CTR Sparac\OneDrive - Federal Aviation Administration\Documents\RNAV PROJECTS\CLT RUNWAY PROJECT\NEW RNAV PROCEDURES\9.3.2026\MAJIC1 STAR\DME\KCLT MAJIC1 (RNAV) STAR DME 28 AUG 2025_FINAL.tgs
Output File:	C:\Users\Breanne M-CTR Sparac\OneDrive - Federal Aviation Administration\Documents\RNAV PROJECTS\CLT RUNWAY PROJECT\NEW RNAV PROCEDURES\9.3.2026\MAJIC1 STAR\DME\KCLT [IFPA] MAJIC1 20250904_1331 EDT\WLFFF_MAJIC\KCLT MAJIC1 RNAV STAR WLFFF MAJIC 20250904_1331 EDT.pdf
Procedure Name:	MAJIC1
Software: DmeDmePlugin:	7.5.1
Date/Time:	09/04/2025 13:31 EDT
Databases:	MITRE 3DEP 3 arcsec

Failures

No Failures

Warnings

No Warnings

Informational

No Informational

Notes For Flight Check

None

Flight Plan

Name	Type	Lat/Lon	Altitude (ft)	VNAV Mode	Ground Speed (kts)	Turn Type	Leg Type
WLFFF	WP	N35° 49' 03.42", W079° 32' 05.51"	9000	VNAV	200	FLY_BY	TF
MAJIC	WP	N35° 48' 42.89", W080° 26' 09.99"	9000	VNAV	200	FLY_BY	TF

Flyability

Flight Type:	RNAV_STAR
Selected Airport:	KCLT [IFPA]
Climb Gradient:	None assigned
Speeds:	200 Ground Speed to 11000 FT
	240 Ground Speed to 18000 FT
	260 Ground Speed to 24000 FT
	340 Ground Speed above 24000 FT
Descent During a Turn:	Allowed
VNAV Mode:	Flight Plan

DME DME Assessment Results for MAJIC1 path WLFF MAJIC

DME/DME	
RNP:	RNP 2
Flight Mode:	Manual
Line of Sight (DTED Level 0 Max):	Evaluated
Inertial Drift:	Enabled
Initial Drift:	0.558 NM
INS Drift Rate:	8.0 NM/Hour
Range Mode:	OSV
RNP Edges:	Evaluated
Min DME Range:	3.0 NM
DME Types:	DME, VOR-DME, VORTAC, TACAN
DME Include Angles:	30 to 150
Critical DMEs:	Not Allowed
DoD Facilities:	Not included
Foreign Facilities:	Not included
High DMEs:	Included
Low DMEs:	Included
Terminal DMEs:	Included
Flight Check DMEs:	Not selected
Higher Altitudes:	Not Evaluated
Near Maximum Altitude:	Not Evaluated
Automatic ESVs:	Not enabled
Disabled DMEs:	None

DME/DME (Continued)										
DMEs Used										
#	Name	Lat/Lon	MAGVAR	Range	Type	Source	Critical	Status	Time	Distance
1	GSO	N36° 02' 44.49", W079° 58' 34.94"	3.0 W	130	H		NO	Enabled	100 %	100 %
2	RDU	N35° 52' 21.08", W078° 47' 00.03"	9.0 W	130	H		NO	Enabled	6.3 %	6.3 %
3	CTF	N34° 39' 01.79", W080° 16' 29.70"	3.0 W	130	DH		NO	Enabled	100 %	100 %
4	LIB	N35° 48' 41.84", W079° 36' 45.33"	3.0 W	40	L		NO	Enabled	81.2 %	81.2 %
5	BZM	N35° 52' 07.87", W081° 14' 25.90"	6.0 W	130	H		NO	Enabled	0.6 %	0.6 %
6	SBV	N36° 40' 30.14", W079° 00' 52.20"	5.0 W	40	L		NO	Enabled	0.5 %	0.5 %
7	SDZ	N35° 12' 55.73", W079° 35' 16.57"	3.0 W	40	L		NO	Enabled	6.7 %	6.7 %
8	CLT	N35° 11' 25.70", W080° 57' 07.18"	5.0 W	40	L		NO	Enabled	0.1 %	0.1 %

Flight Check DME Selection						
Distance [NM]	Selected DMEs					Alternate
0.0	SBV	GSO	CTF	RDU		
0.3	SDZ	RDU	LIB	GSO	CTF	
0.8	SDZ	RDU	GSO	CTF		
1.9	GSO	CTF	RDU			
2.8	GSO	CTF				
8.7	LIB	CTF	GSO			
17.2	GSO	LIB	CTF	SDZ		
18.6	GSO	LIB	CTF			
43.7	LIB	CTF	BZM	GSO		
43.9	BZM	CTF	GSO	CLT		

Inertial Drift Segments			
#	Start Location	End Location	Length [NM]

DME DME Assessment Results for MAJIC1 path WLFFF_MAJIC

Available DMEs by Waypoints			
Waypoint Before	Waypoint After	DME List	Suggested DMEs
WLFFF	MAJIC	GSO, RDU, CTF, LIB, BZM, SBV, SDZ, CLT	

User Data Files

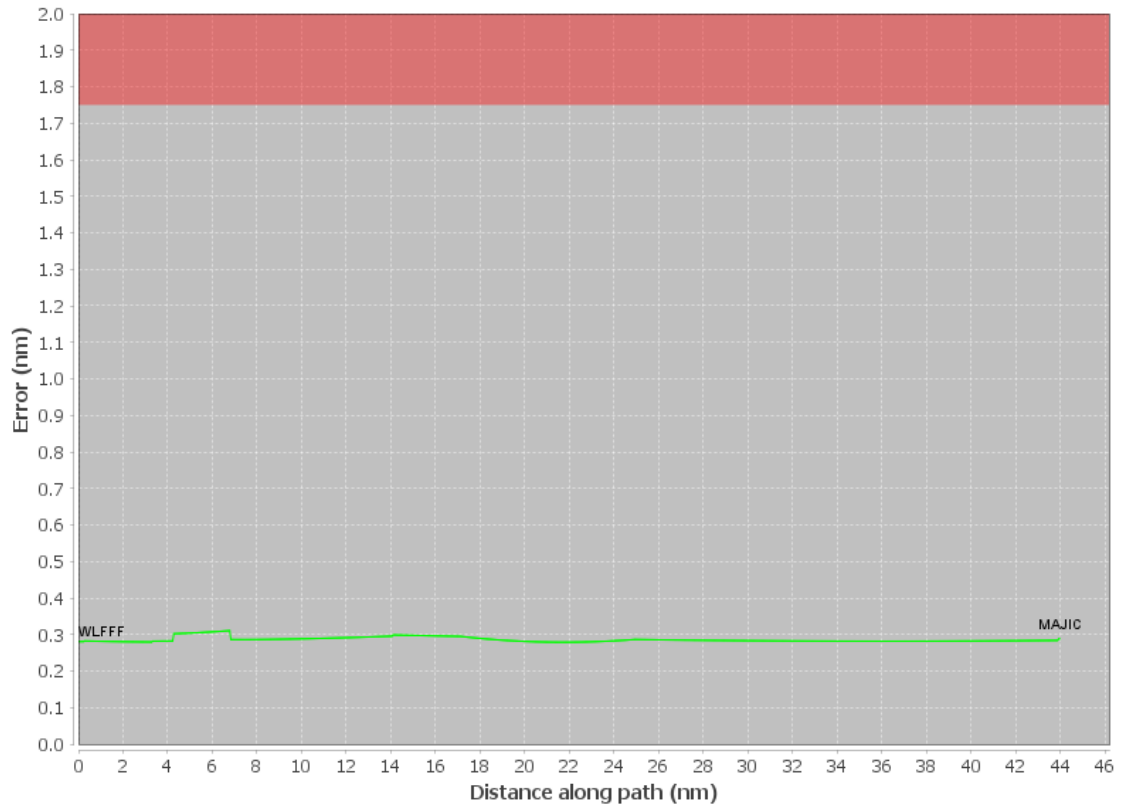
#	File Name
	None

User DMEs

#	Name	Lat/Lon	MAGVAR	Range	Elevation [ft]	Frequency	Replaces	Status
1	CLT FAA 861274-26 CLT	N35° 11' 25.70", W080° 57' 07.18"	5.0 W	40	758.7	115.0	CLT FAA 861274-26	
	ESV:	Bearing [True]: 29.0° to 39.0° Bearing [Mag]: 34.0° to 44.0°				Arc Distance: Out to 90.0 NM Altitude: 5000.0 to 31000.0 ft		
2	SDZ FAA 704009-24 SDZ	N35° 12' 55.73", W079° 35' 16.57"	3.0 W	40	588	111.8	SDZ FAA 704009-24	
	ESV:	Bearing [True]: 301.0° to 313.0° Bearing [Mag]: 304.0° to 316.0°				Arc Distance: Out to 85.0 NM Altitude: 6900.0 to 20000.0 ft		
3	ESV ROA [IFPA] ROA	N37° 20' 36.47", W080° 04' 13.43"	4.0 W	40	3071.9	109.4	ESV ROA [IFPA]	
	ESV:	Bearing [True]: 91.0° to 136.0° Bearing [Mag]: 95.0° to 140.0°				Arc Distance: Out to 50.0 NM Altitude: 11500.0 to 18500.0 ft		
4	GSO FAA 698207-54 GSO	N36° 02' 44.49", W079° 58' 34.94"	3.0 W	130	907.9	116.2	GSO FAA 698207-54	
	ESV:	Bearing [True]: 162.0° to 61.0° Bearing [Mag]: 165.0° to 64.0°				Arc Distance: Out to 113.0 NM Altitude: 11000.0 to 18000.0 ft		
5	SBV FAA 683652-42 SBV	N36° 40' 30.14", W079° 00' 52.20"	5.0 W	40	520.1	110.4	SBV FAA 683652-42	
	ESV:	Bearing [True]: 198.0° to 210.0° Bearing [Mag]: 203.0° to 215.0°				Arc Distance: Out to 61.0 NM Altitude: 3500.0 to 12000.0 ft		
6	PSK FAA 760655-6 PSK	N37° 05' 15.67", W080° 42' 46.38"	6.0 W	130	2127.2	116.8	PSK FAA 760655-6	
	ESV:	Bearing [True]: 120.0° to 163.0° Bearing [Mag]: 126.0° to 169.0°				Arc Distance: Out to 68.0 NM Altitude: 10000.0 to 16700.0 ft		
7	RDU FAA 694151-40 RDU	N35° 52' 21.08", W078° 47' 00.03"	9.0 W	130	429.2	117.2	RDU FAA 694151-40	
	ESV:	Bearing [True]: 307.0° to 314.0° Bearing [Mag]: 316.0° to 323.0°				Arc Distance: Out to 88.0 NM Altitude: 9900.0 to 15000.0 ft		

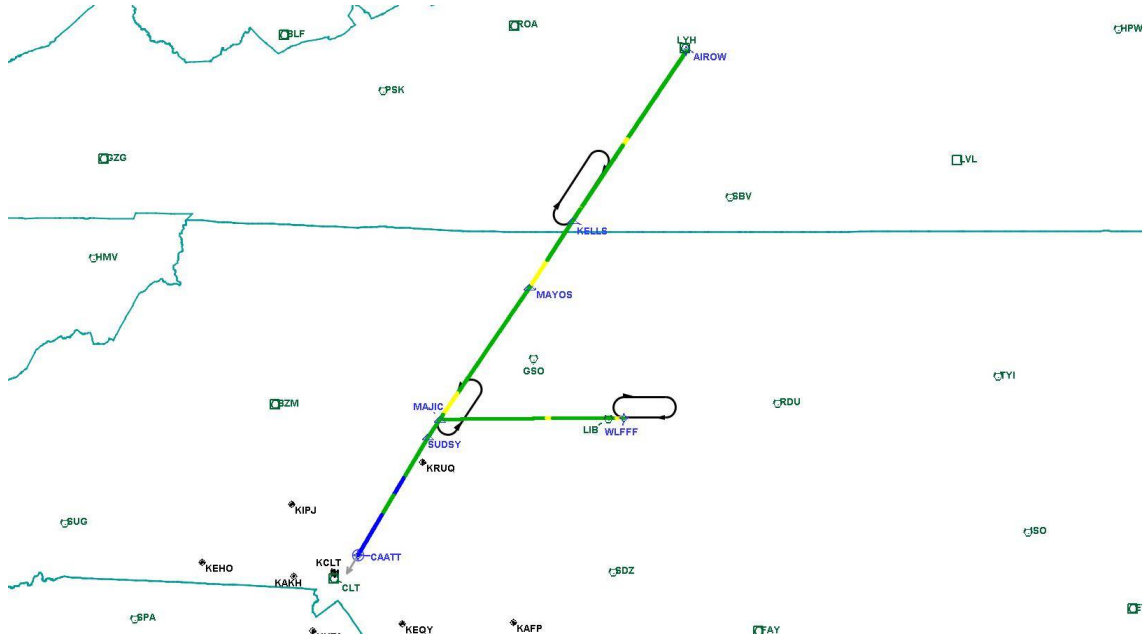
DME DME Assessment Results for MAJIC1 path WLFFF_MAJIC

DME Error



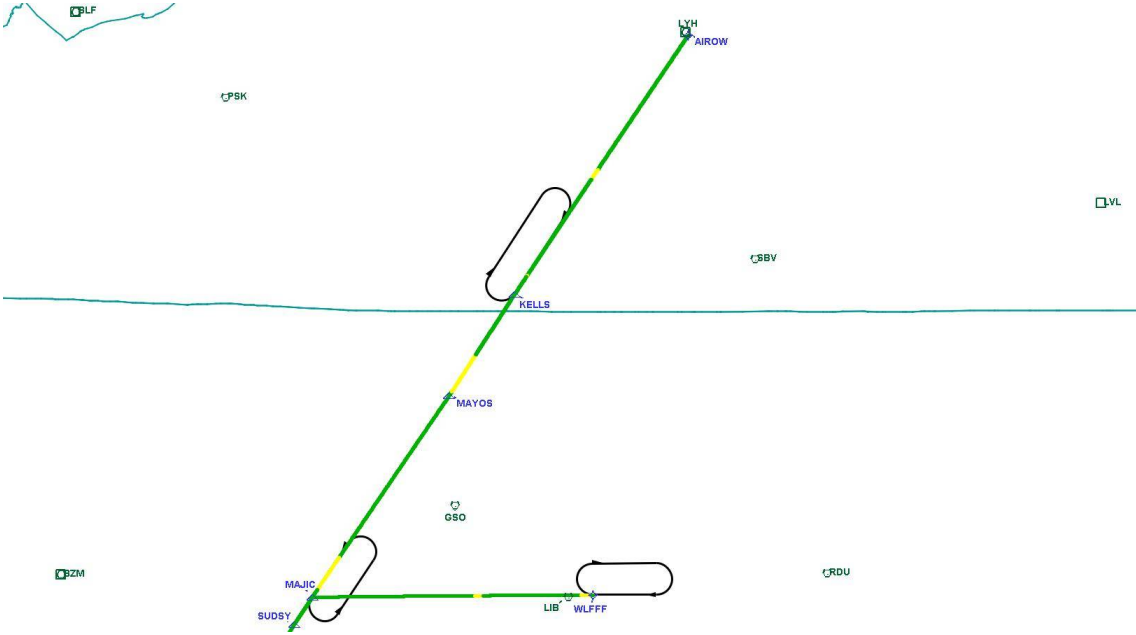
DME DME Assessment Results for MAJIC1 path WLFF_MAJIC

Graphic Depiction 1



DME DME Assessment Results for MAJIC1 path WLFFF_MAJIC

Graphic Depiction 2



DME DME Assessment Results for MAJIC1 path WLFFF_MAJIC

Graphic Depiction 3

