

(PSC1.PSC) FIG

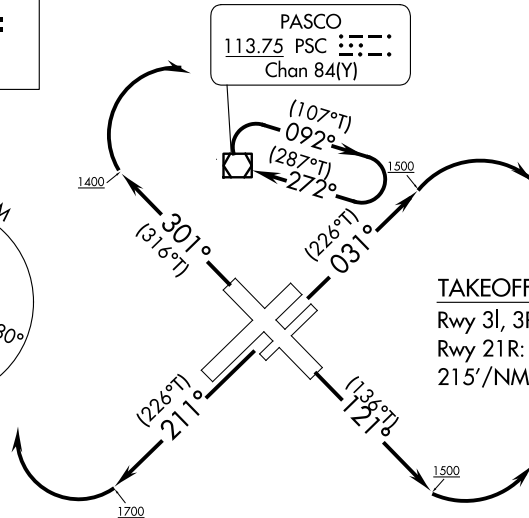
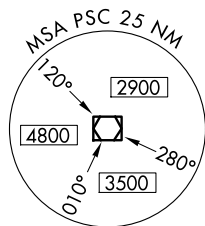
AL-474 (FAA)

## PASCO ONE DEPARTURE (OBSTACLE)

TRI-CITIES (PSC)  
PASCO, WASHINGTON

**TOP ALTITUDE:**  
**7000**

SPOKANE DEP CON ★  
128.75 377.2  
ATIS  
125.65  
CLNC DEL  
120.0  
GND CON  
121.8  
TRI-CITIES TOWER ★  
135.3 (CTAF) 323.3



### TAKEOFF MINIMUMS

Rwy 3L, 3R, 12, 21L, 301: Standard.  
Rwy 21R: Standard with minimum climb of  
215'/NM to 1500 or 1500-3 for VOCA.

### TAKEOFF OBSTACLE NOTES

Rwy 3L: Vegetation 96' from DER, 479' left of centerline, 405' MSL.  
Vehicles on road 1785' from DER, 737' right of centerline, 447' MSL.  
Towers, electrical system beginning 2450' from DER, 94' right of centerline, up to 56' AGL/484' MSL.  
Tank 4658' from DER, 1502' left of centerline, 89' AGL/520' MSL.  
Rwy 3R: Vegetation 255' from DER, 258' right of centerline, 413' MSL.  
Vegetation 970' from DER, 47' right of centerline, 430' MSL.  
Tower 1441' from DER, 602' right of centerline, 50' AGL/471' MSL.  
Towers beginning 1513' from DER, 110' right of centerline, up to 109' AGL/528' MSL.  
Rwy 12: Navaid 115' from DER, 149' left of centerline, 3' AGL/405' MSL.  
Trees beginning 967' from DER, 291' right of centerline, up to 465' MSL.  
Pole 1442' from DER, 588' left of centerline, 35' AGL/442' MSL.  
Rwy 30: Vehicles on road 25' from DER, 493' right of centerline, 402' MSL.  
Agricultural equipment 66' from DER, 409' left of centerline, 12' AGL/399' MSL.  
Pole, transmission line beginning 1350' from DER, 610' right of centerline, up to 432' MSL.  
Terrain 2895' from DER, 1114' left of centerline, 472' MSL.  
Terrain, vegetation beginning 2970' from DER, 1105' left of centerline, up to 479' MSL.  
Terrain beginning 3201' from DER, 525' left of centerline, up to 491' MSL.  
Terrain beginning 3389' from DER, 658' left of centerline, up to 500' MSL.  
Trees, terrain beginning 3446' from DER, 917' left of centerline, up to 518' MSL.  
Buildings, trees, terrain beginning 3696' from DER, 487' left of centerline, up to 29' AGL/521' MSL.  
Buildings 4151' from DER, 1419' left of centerline, 32' AGL/524' MSL.  
Building beginning 4271' from DER, 997' left of centerline, up to 31' AGL/530' MSL.  
Poles, buildings beginning 4637' from DER, 985' left of centerline, up to 31' AGL/540' MSL.

NOTE: Chart not to scale.

**PROTOTYPE-NOT  
FOR NAVIGATION**



### DEPARTURE ROUTE DESCRIPTION

TAKEOFF RUNWAY 03L, 03R: Climb on heading 031° to 1500 thence....

TAKEOFF RUNWAY 12: Climb on heading 121° to 1500 thence....

TAKEOFF RUNWAY 21L, 21R: Climb on heading 211° to 1700 thence....

TAKEOFF RUNWAY 30: Climb on heading 301° to 1400 thence....

...runway 12 turn left, all others turn right. Then climb direct PSC VOR/DME  
continue climb in PSC VOR/DME holding pattern (hold east, right turns, 272°  
inbound) until reaching the MEA/MCA for direction of flight.

Runway 21R: Obtain ATC approval for VCOA when requesting IFR clearance.  
climb in visual conditions to cross Tri-Cities airport at or above 1800.

**AUTOMATED AL-474 PASCO DEPARTURE**

NW-1

5-12-25

COMPILER: JUN

REVIEWER:

DBL CHKR:

EFF: FIG

## PASCO ONE DEPARTURE (OBSTACLE)

PASCO, WASHINGTON  
TRI-CITIES (PSC)

(PSC1.PSC) FIG