

SLAYTON, MINNESOTA

AL-9379 (FAA)

FIG

WAAS CH 53633 W17A	APP CRS 176°	Rwy Ldg TDZE Apt Elev	3005 1623 1623
--	------------------------	-----------------------------	---

RNAV (GPS) RWY 17

SLAYTON MUNI (DVP)

RNP APCH - GPS.

⚠ When local altimeter setting not received, use TKC altimeter setting and increase all MDAs 100 feet. Procedure NA at night. Rwy 17 helicopter visibility reduction below 1 SM NA.

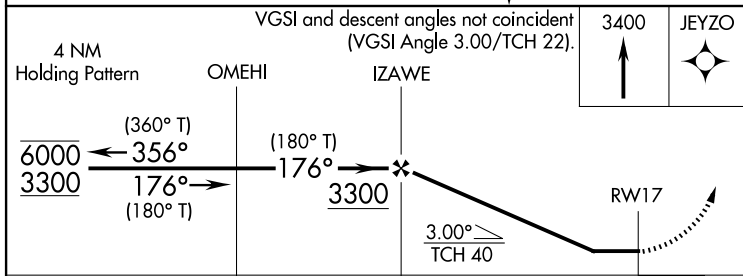
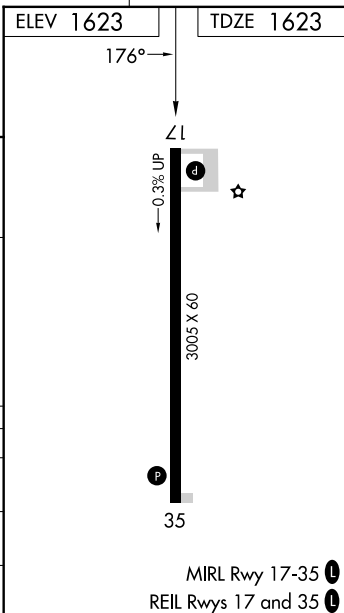
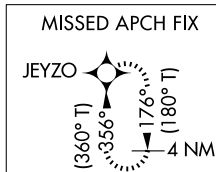
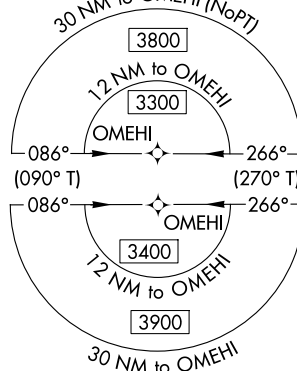
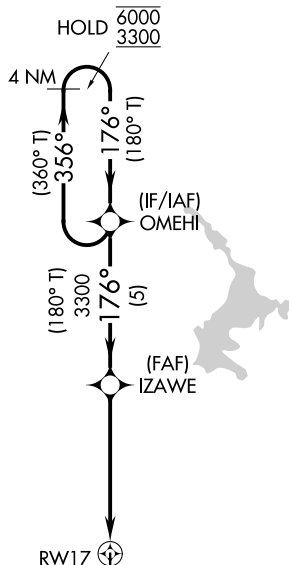
MISSED APPROACH: Climb to 3400 direct JEYZO and hold.

AWOS-3
118.55

MINNEAPOLIS CENTER
132.05 317.4

CTAF
122.9

PROTOTYPE: NOT FOR NAVIGATION



CATEGORY	A	B	C	D
LP MDA	2100-1	477 (500-1)		NA
LNAV MDA	2120-1	497 (500-1)		NA
CIRCLING	2120-1 497 (500-1)	2300-1 677 (700-1)		NA

SLAYTON, MINNESOTA
Orig-B FIG

43°59'N-95°47'W

RNAV (GPS) RWY 17

AUTOMATED AL-9379 RNAV (GPS) RWY 17

NC-1
29 JAN 2026
COMPILER: CG
REVIEWER:
DBL CHKR:
EFF: FIG