

Flight Procedures Cover Page	Task Action: FLIGHT CHECK	Task Type: IAP	Estimated Chart Date: 05/14/2026	APWS Task ID: AD7D1332C3FE454CBD2DB6B0951BD893	APWS Project ID: 3B5E55B863924310BECDB639A070322A
Procedure: RNAV (GPS) RWY 17 AMDT 0B		Enroute: NO	Specialist: Suppes, Jill		Agreement Number:
Airport ID: KDVP			Airport City: SLAYTON		State: MN
Facility ID:	Facility Type:	Flight Inspection Remark Type: New FC Slot			

**Procedure Comments:**

UTILIZED PENDING DATA FOR KDVP AIRPORT AND RWY 17.

CLEARs NOTAM FDC 5/8387: TAA SECTOR STRAIGHT-IN 266/12 CW 086/12 TO OMEHI, MINIMUM ALTITUDE INCREASED FROM 3300 TO 3400 DUE TO NEW CONTROLLING OBSTACLE.

UPDATED CRC REMAINDER BCF3D78A.

CONTACT ROBERT HAMILTON: AJV-A433, 405-954-4608.

QUALITY  
24  
CHECKED

QUALITY  
41  
CHECKED



WAAS CH <b>53633</b> <b>W17A</b>	APP CRS <b>176°</b>	Rwy Idg TDZE Apt Elev	<b>3005</b> <b>1623</b> <b>1623</b>
----------------------------------------	------------------------	-----------------------------	-------------------------------------------

**OLD**

**RNAV (GPS) RWY 17**  
SLAYTON MUNI (DVP)

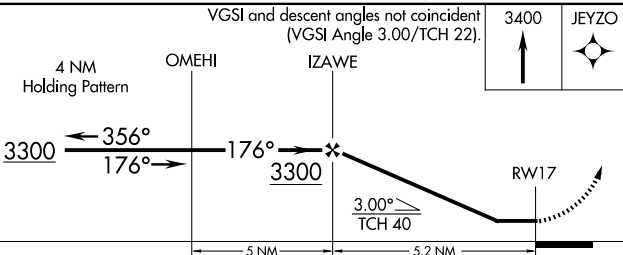
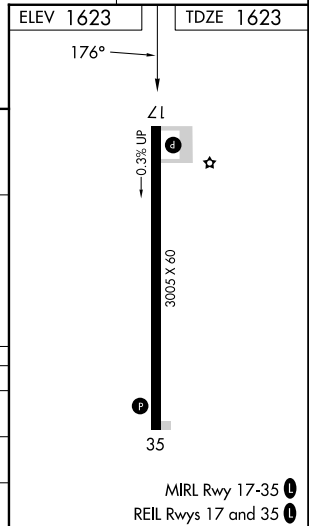
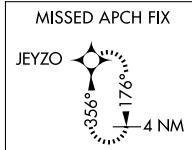
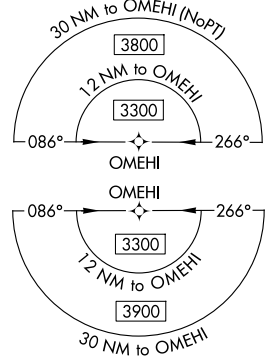
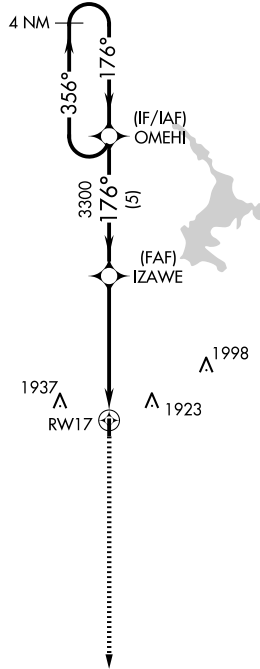
⚠ When local altimeter setting not received, use Tracy Muni altimeter setting and increase all MDAs 80 feet. DME/DME RNP-0.3 NA. Procedure NA at night. Helicopter visibility reduction below 1 SM NA.

MISSED APPROACH: Climb to 3400 direct JEYZO and hold.

AWOS-3  
**118.55**

MINNEAPOLIS CENTER  
**132.05 317.4**

CTAF  
**122.9 0**



CATEGORY	A	B	C	D
LP MDA	2100-1	477 (500-1)		NA
LNAV MDA	2120-1	497 (500-1)		NA
<b>C</b> CIRCLING	2120-1 497 (500-1)	2300-1 677 (700-1)		NA