

Flight Procedures Cover Page	Task Action: P-NOTAM	Task Type: IAP	Estimated Chart Date: 05/14/2026	APWS Task ID: AE66698E4E2548188839AA6F4123A100	APWS Project ID: 27C63606FC6C4C63A6E5ECC8D257F0F9
Procedure: RNAV (GPS) RWY 12 AMDT 0B		Enroute: NO	Specialist: Johnson, Timothy		Agreement Number:
Airport ID: 03D			Airport City: MEMPHIS		State: MO
Facility ID:	Facility Type:	Flight Inspection Remark Type:			
<p><b>Procedure Comments:</b>          Visibility Initiative (Garmin) - Update IAP visibility minimums IAW Order 8260.3, Chapter 3, Section 3-3. Visibility Minimums.</p> <p>PROCESSED IAW TECHNICAL SUPPORT GROUP (AJF-17) MEMO DATED 07/07/2021, SUBJECT: GUIDANCE FOR PROCEDURAL CHANGES REQUIRING FLIGHT INSPECTION/VALIDATION.</p> <p>CONTACT: CASEY HILL (405) 954-0624.</p>					

QUALITY  
6 SN 2/13/26  
CHECKED

QUALITY  
41  
CHECKED

OLD

MEMPHIS, MISSOURI

AL-10409 (FAA)

26022

WAAS CH <b>93637</b> <b>W12A</b>	APP CRS <b>119°</b>	Rwy Ldg TDZE <b>813</b> Apt Elev <b>813</b>	<b>3300</b>
--	------------------------	---	-------------

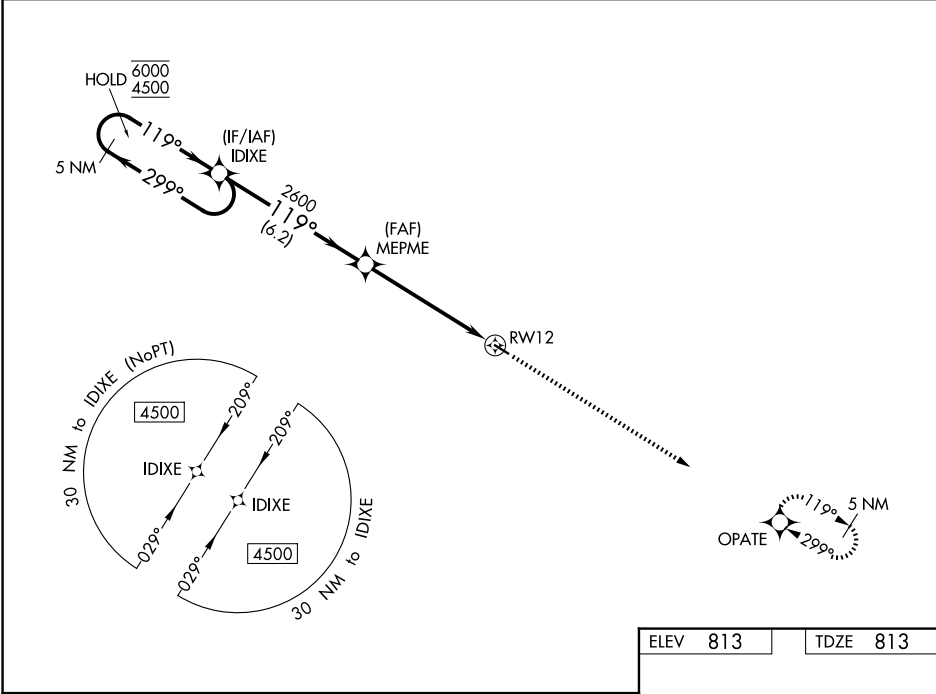
# RNAV (GPS) RWY 12

MEMPHIS MEML (Ø3D)

RNP APCH.  
 ▽ Rwy 12 helicopter visibility reduction below ¾ SM NA.  
 ▲ NA Baro-VNAV NA. Use Kirksville altimeter setting.

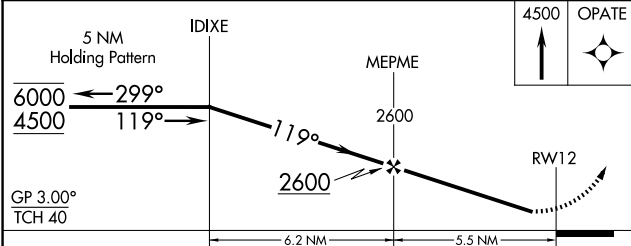
MISSED APPROACH: Climb to 4500 direct OPATE and hold, continue climb-in-hold to 4500.

IRK ASOS <b>121.125</b>	KANSAS CITY CENTER <b>126.225 317.775</b>	CTAF <b>122.90</b>
----------------------------	--	-----------------------

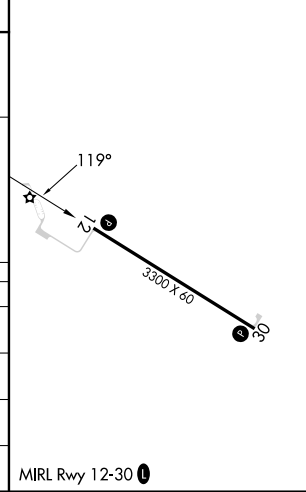


NC-3, 22 JAN 2026 to 19 FEB 2026

NC-3, 22 JAN 2026 to 19 FEB 2026



ELEV 813	TDZE 813
----------	----------



CATEGORY	A	B	C	D
LPV DA	1144-1 331 (400-1)			NA
RNAV/VNAV DA	1144-1 331 (400-1)			NA
RNAV MDA	1360-1	547 (600-1)	1360-1 3/8 547 (600-1 3/8)	NA
CIRCLING	1360-1	547 (600-1)	1500-2 687 (700-2)	NA

MEMPHIS, MISSOURI  
 Orig-A 25FEB21

40°27'N-92°14'W

# RNAV (GPS) RWY 12

MEMPHIS MEML (Ø3D)

MIRL Rwy 12-30