

Flight Procedures Cover Page	Task Action: FLIGHT CHECK	Task Type: IAP	Estimated Chart Date: 03/19/2026	APWS Task ID: AEC615679A0E4ADCBABE6A3BC037FC0F	APWS Project ID: 16B12DD8113C488AAE8709B5497BD5C7
Procedure: ILS OR LOC RWY 4R AMDT 2G		Enroute: NO	Specialist: Hardison, Dustin		Agreement Number:
Airport ID: KLFT			Airport City: LAFAYETTE		State: LA
Facility ID: TYN	Facility Type: ILS	Flight Inspection Remark Type: New FC Slot			

Procedure Comments:
CURRENT AIRNAV DATA USED.
Processed IAW Technical Support Group (AJF-17) Memo dated 07/07/2021 Guidance for Procedural Changes Requiring Flight Inspection/Validation.
Contact Rake McGraw AJV-A422
(405)597-8711

QUALITY
41
CHECKED

QUALITY
10
CHECKED

LOC/DME I-TYN 110.9 Chan 46	APP CRS 036°	Rwy Ldg 8000 TDZE 40 Apt Elev 42
---	------------------------	---

OLD

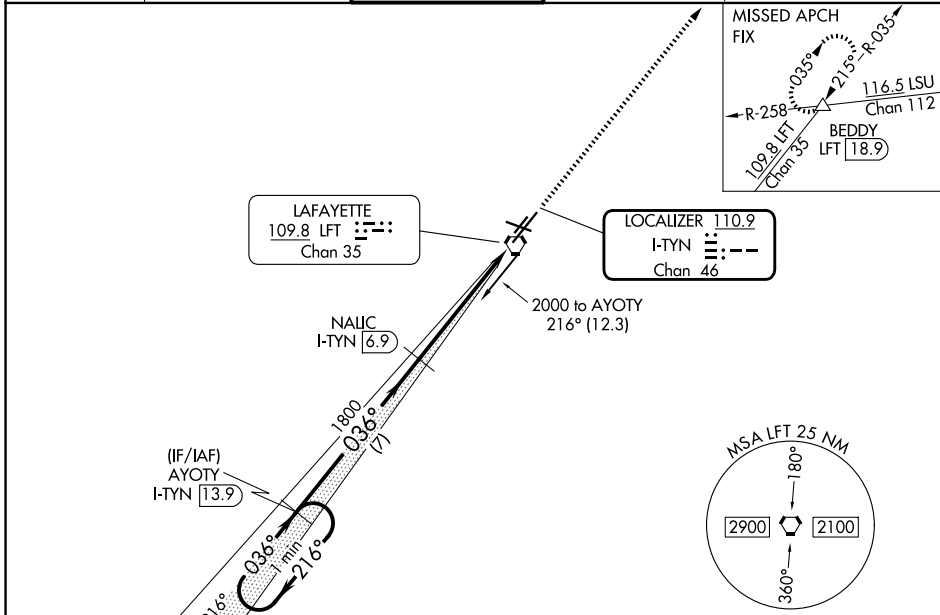
ILS or LOC RWY 4R
LAFAYETTE RGNL/PAUL FOURNET FLD (LFT)

DME required for procedure entry and for LOC only.

⚠ Rwy 4R helicopter visibility reduction below 3/4 SM NA. VDP NA when using Acadiana Rgnl altimeter setting. When local altimeter setting not received, use Acadiana Rgnl altimeter setting and increase all DA 29 feet and all MDA 40 feet, increase S-ILS 4R and S-LOC 4R visibility all Cats 1/8 SM, Circling visibility Cat C/D 1/4 SM.

MISSED APPROACH FIX to 2000 on LFT R-035 to BEDDY INT/LFT 18.9 DME and hold.

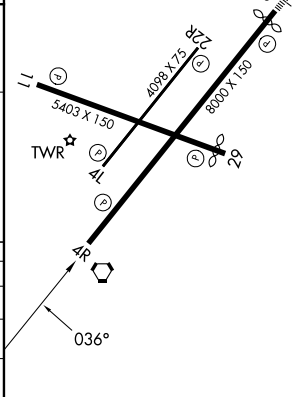
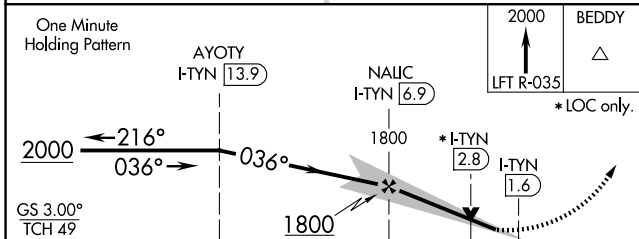
ATIS 134.05	LAFAYETTE APP CON * 121.1 363.0	LAFAYETTE TOWER * 118.5(CTAF) 257.8	GND CON 121.8	UNICOM 122.95
-----------------------	---	---	-------------------------	-------------------------



SC-4, 30 OCT 2025 to 27 NOV 2025

SC-4, 30 OCT 2025 to 27 NOV 2025

ELEV 42	D TDZE 40
REIL Rwy 4L, 4R, 11, 22R and 29 MIRL Rwy 4L-22R and 11-29 HIRL Rwy 4R-22L	



CATEGORY	A	B	C	D
S-ILS 4R	316-7/8		276 (300-7/8)	
S-LOC 4R	500-1	460 (500-1)	500-13/8	460 (500-13/8)
CIRCLING	540-1	580-1	700-13/4	700-2
	498 (500-1)	538 (600-1)	658 (700-13/4)	658 (700-2)