

Flight Procedures Cover Page	Task Action: P-NOTAM	Task Type: IAP	Estimated Chart Date: 11/30/2023	APWS Task ID: AED4B736304F4EF58355A310324303FC	APWS Project ID: B24332E5FDB848B3AC45C57D7E457CFA
Procedure: RNAV (GPS) RWY 35 AMDT 2A		Enroute: NO	Specialist: Boone-walt, Rose		Agreement Number:
Airport ID: PHKO			Airport City: KAILUA-KONA		State: HI
Facility ID:	Facility Type:	Flight Inspection Remark Type:			

Procedure Comments:
Clear NTM FDC 2/4853.

PROCESSED IAW TECHNICAL SUPPORT GROUP (AJF-17) MEMO DATED 07/07/2021,
SUBJECT: GUIDANCE FOR PROCEDURAL CHANGES REQUIRING FLIGHT INSPECTION/VALIDATION

CONTACT: JASON KRETSCHMER AJV-A421 LEAD: 405.954.4019

Digitally signed by
JASON KRETSCHMER
Aug 14, 2023

QUALITY
9
CHECKED
BEGUE

QUALITY
30
CHECKED

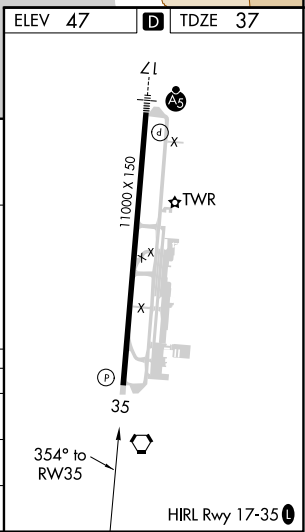
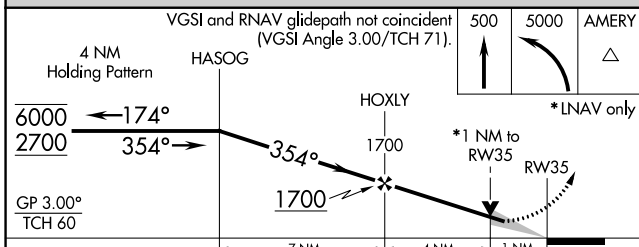
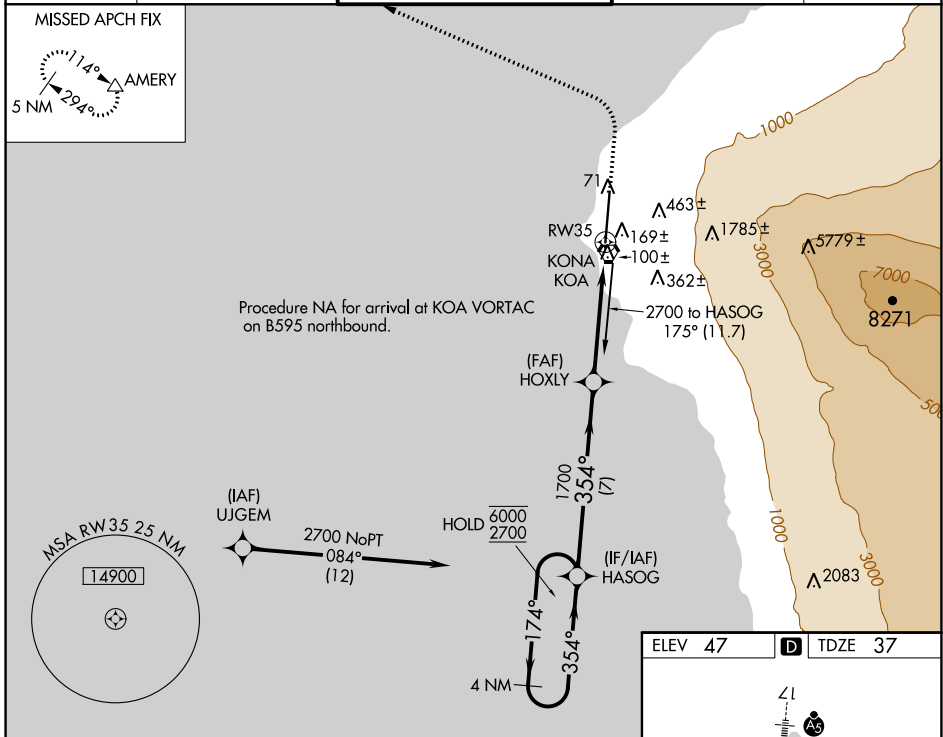
APP CRS	Rwy Idg	11000
354°	TDZE	37
	Apt Elev	47

RNAV (GPS) RWY 35

ELLISON ONIZUKA KONA INTL AT KEAHOLE (KOA) (PHKO)

RNP APCH.		MISSED APPROACH: Climb to 500 then climbing left turn to 5000 direct AMERY and hold.	
<p>⚠ Circling NA east of Rwy 17-35. WAAS VNAV NA. For uncompensated Baro-VNAV systems, LNAV/VNAV NA below 17°C or above 54°C.</p>			

ATIS 127.4	HCF CENTER 118.45 278.3	KONA TOWER* 120.3 (CTAF) 254.3	GND CON 121.9	CLNC DEL 118.6
----------------------	-----------------------------------	--	-------------------------	--------------------------



CATEGORY	A	B	C	D	E
LNAV/VNAV DA	366-1 329 (400-1)				
LNAV MDA	420-1 383 (400-1)		420-1½ 383 (400-1½)		
C CIRCLING	520-1 473 (500-1)		600-2 553 (600-2)		

PAC: 15 JUN 2023 to 10 AUG 2023

PAC: 15 JUN 2023 to 10 AUG 2023