

Flight Procedures Cover Page	Task Action: Cancellation	Task Type: IAP	Estimated Chart Date: 07/09/2026	APWS Task ID: AF17B0BA53584C51A6078273B86CB672	APWS Project ID: 41EF274B3F2E4868AE7EC7760B604DF0
Procedure: ILS OR LOC RWY 36C AMDT 17		Enroute: NO	Specialist: Johnson, Timothy		Agreement Number:
Airport ID: KCLT			Airport City: CHARLOTTE		State: NC
Facility ID: DQG	Facility Type: ILS	Flight Inspection Remark Type:			

Procedure Comments:
CANCEL PROCEDURE. RWY NUMBERING CHANGING FROM 36C TO 1R.

CONTACT: CASEY HILL (405) 954-0624.



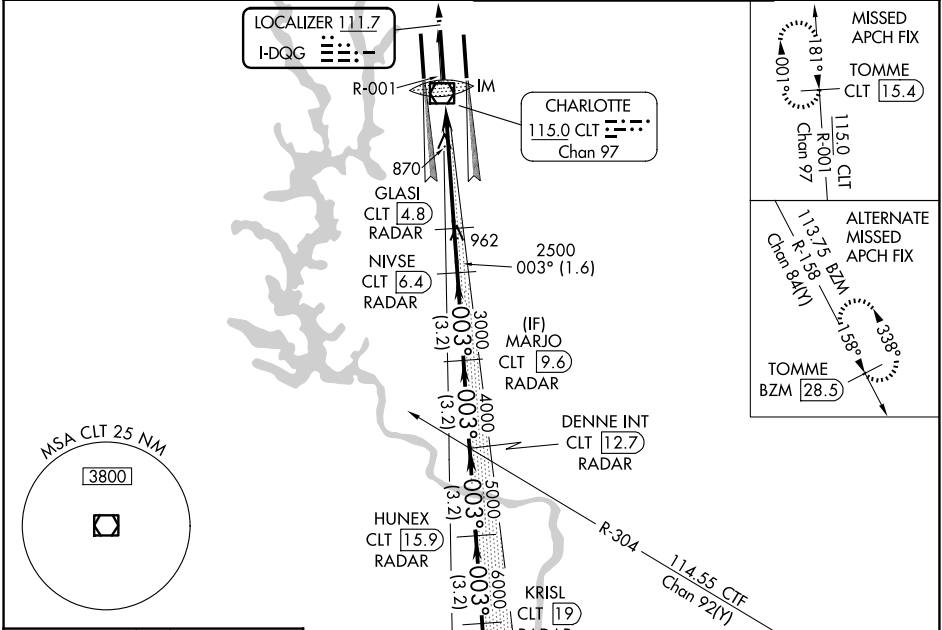
ILS RWY 36C (CAT II & III) CHARLOTTE/DOUGLAS INTL (CLT)

LOC I-DQG 111.7	APP CRS 003°	Rwy Ldg 10000
		TDZE 707
		Apt Elev 748

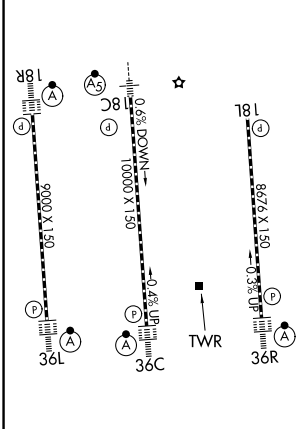
RADAR required for procedure entry. DME or RADAR required.
 Simultaneous approach authorized.
 DQG ILS LLZ Rwy 36C unusable for rollout guidance.

ALSF-2
 MISSED APPROACH: Climb to 3000 on CLT
 VOR/DME R-001 to TOMME/CLT 15.4 DME and hold.

D-ATIS 121.15	CHARLOTTE APP CON 128.325 (001°-119°) 120.05 (120°-295°) 134.75 (296°-360°)	CHARLOTTE TOWER 118.1 257.8 (Rwys 18L-36R) 126.4 257.8 (Rwy 18C-36C) 133.35 257.8 (Rwy 18R-36L)	GND CON 121.8 348.6 (W) 121.9 348.6 (E)
-------------------------	---	--	---



ELEV 748	D	TDZE 707
----------	----------	----------



3000 CLT R-001	TOMME CLT 15.4	VGSi and ILS glidepath not coincident (VGSi Angle 3.00/TCH 72).		SOLMNM CLT 22.2 RADAR
IM CLT 809 RADAR	GLASI CLT 4.8 RADAR	NIVSE CLT 6.4 RADAR	MARJO CLT 9.6 RADAR	DENNE INT CLT 12.7 RADAR
2500	3000	4000	5000	6000
7000	8000	003°	8000	
				GS 3.00° TCH 57
CATEGORY	A	B	C	D
S-ILS 36C	CAT II RA 126/12 100 DA 807			
S-ILS 36C	CAT IIIa RVR 07			
S-ILS 36C	CAT IIIb RVR 07			
S-ILS 36C	CAT IIIc NA			

CATEGORY II & III ILS - SPECIAL AIRCREW & AIRCRAFT CERTIFICATION REQUIRED

SE-2, 27 NOV 2025 to 25 DEC 2025

SE-2, 27 NOV 2025 to 25 DEC 2025