

LOC/DME I-SPA <b>109.1</b> Chan 28	APP CRS <b>047°</b>	Rwy Ldg TDZE Apt Elev	<b>5852</b> <b>802</b> <b>802</b>
--	------------------------	-----------------------------	---

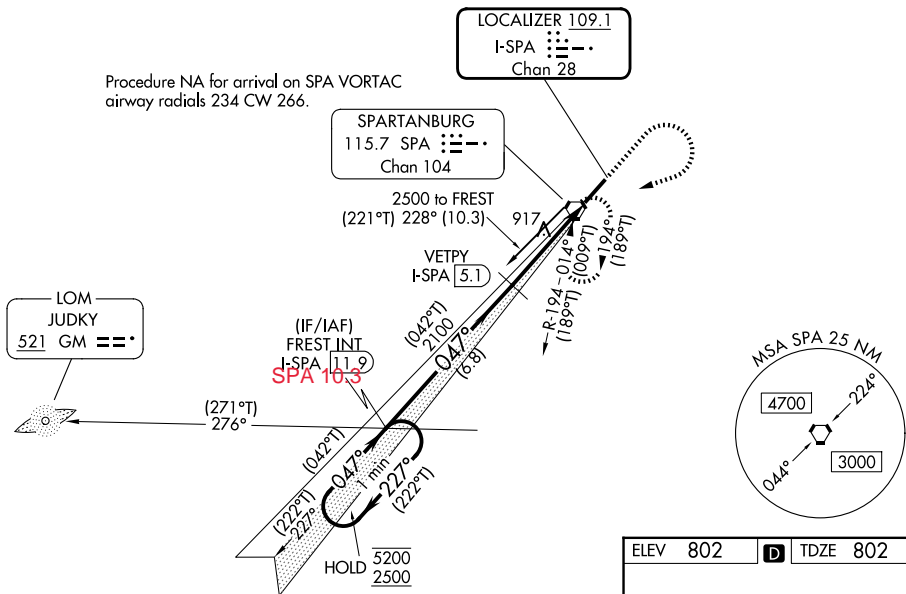
# ILS or LOC RWY 5

SPARTANBURG DOWNTOWN MEML/SIMPSON FLD (SPA)

DME required.		MALSR	MISSED APPROACH: Climb to 1500 then climbing right turn to 4000 direct SPA VORTAC and hold, continue climb-in-hold to 4000.
AWOS-3 <b>133.925</b>	GREER APP CON * <b>119.4 350.2</b>	CLNC DEL <b>120.55</b>	UNICOM <b>123.0 (CTAF)</b>

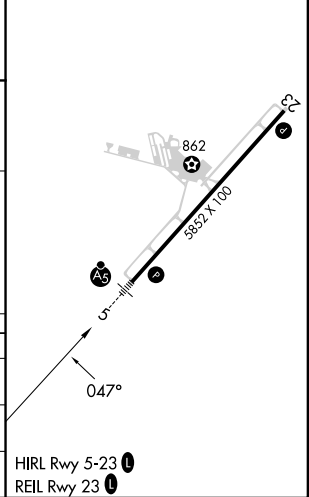
## PROTOTYPE-NOT FOR NAVIGATION

Procedure NA for arrival on SPA VORTAC  
airway radials 234 CW 266.



ELEV 802	TDZE 802
----------	----------

One Minute Holding Pattern	VGSI and ILS glidepath not coincident (VGSI Angle 3.00/TCH 45).			
	FREST INT I-SPA 11.9	VETPY I-SPA 5.1	I-SPA 2.1	I-SPA 1.1
5200	222°T	2100	2100	2100
2500	047° (042°T)	047° (042°T)	047° (042°T)	047° (042°T)
GS 3.00° TCH 50	6.8 NM	2.9 NM	1 NM	
CATEGORY	A	B	C	D
S-ILS 5		1002-¾	200 (200-¾)	
S-LOC 5		1160-¾	358 (400-¾)	
CIRCLING	1320-1	518 (600-1)	1380-1½ 578 (600-1½)	1420-2 618 (700-2)



# ILS or LOC RWY 5