

Flight Procedures Cover Page	Task Action: FLIGHT CHECK	Task Type: IAP	Estimated Chart Date: 01/22/2026	APWS Task ID: B02A88092D074326A60323B28204281E	APWS Project ID: 8D33D21605774D75BE0CF580E35C12D8
Procedure: ILS OR LOC RWY 5 AMDT 3		Enroute: NO	Specialist: Hirst, Charles		Agreement Number:
Airport ID: KSPA			Airport City: SPARTANBURG		State: SC
Facility ID: SPA	Facility Type: ILS	Flight Inspection Remark Type: New FC Slot			

Procedure Comments:

REDESIGN MISSED APPROACH TO NEW SPA VORTAC APPROACH, UPDATE SPA VORTAC TO FREST INT FEEDER, UDPATE NAVAID MAGVAR

ACTIVE AIRPORT DATA USED
PENDING SPA VORTAC DATA USED
ACTIVE I-SPA ILS DATA USED

FOR ADDITIONAL QUESTIONS CONTACT CASEY HILL, MANAGER 4059540624

/27/2025: THIS IS AN UPDATED COPY OF THE FORM DEVELOPED ON 7/10/2025.
8260-2:

1. JUDKY LOM FIX USE REMOVED KGYH ILS OR LOC RWY 5



ACTIVE PROCEDURE

SPARTANBURG, SOUTH CAROLINA

AL-401 (FAA)

23222

LOC/DME I-SPA 109.1 Chan 28	APP CRS 047°	Rwy Idg 5852 TDZE 802 Apt Elev 802
--	------------------------	---

ILS or LOC RWY 5

SPARTANBURG DOWNTOWN MEML/SIMPSON FLD (SPA)

DME required. For inop ALS, increase S-LOC 5 Cats C/D visibility to 1 SM.	MALSR 	MISSED APPROACH: Climb to 1300 then climbing left turn to 3000 direct SPA VORTAC and hold, continue climb-in-hold to 3000.
--	-----------	--

AWOS-3 133.925	GREER APP CON * 119.4 350.2	CLNC DEL 120.55	UNICOM 123.0 (CTAF)
--------------------------	---------------------------------------	---------------------------	-------------------------------

Procedure NA for arrival on SPA VORTAC airway radials 231 CW 269.

SPARTANBURG
115.7 SPA
Chan 104

2500 to FREST
212° (17.8)
1336 Δ

1053 \pm Δ

LOCALIZER **109.1**
I-SPA
Chan 28

1004 Δ Δ 924

899 \pm

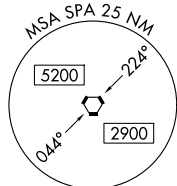
Δ 1198

Δ 1677

LOM
JUDKY
521 GM

(IF/IAF)
FREST INT
I-SPA **11.9**

VETPY
I-SPA **5.1**



276°

227°

047°

1 min

227°

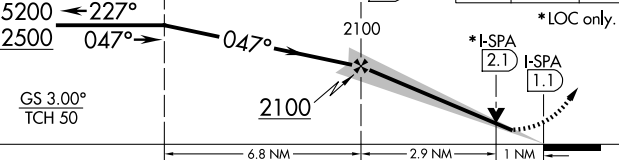
5200

2500

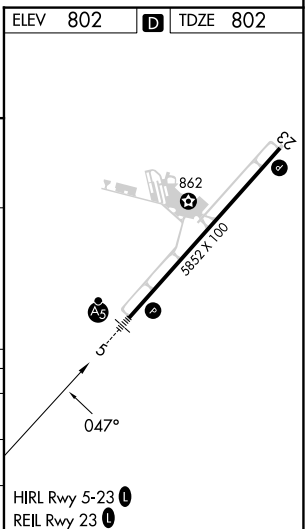
HOLD

1849 Δ

One Minute Holding Pattern VGSI and ILS glidepath not coincident (VGSI Angle 3.00/TCH 45).
FREST INT I-SPA **11.9** VETPY I-SPA **5.1**



CATEGORY	A	B	C	D	
S-ILS 5		1002- ³ / ₄	200 (200- ³ / ₄)		
S-LOC 5		1160- ³ / ₄	358 (400- ³ / ₄)		
CIRCLING	1320-1	518 (600-1)	1380-1 ¹ / ₂ 578 (600-1 ¹ / ₂)	1420-2 618 (700-2)	HIRL Rwy 5-23 REIL Rwy 23



SE-2, 17 APR 2025 to 15 MAY 2025

SE-2, 17 APR 2025 to 15 MAY 2025

SPARTANBURG, SOUTH CAROLINA
Amdt 2A 15JUN23

SPARTANBURG DOWNTOWN MEML/SIMPSON FLD (SPA)
34°55'N-81°57'W

ILS or LOC RWY 5

LOC/DME I-SPA 109.1 Chan 28	APP CRS 047°	Rwy Ldg TDZE Apt Elev	5852 802 802
--	------------------------	-----------------------------	---

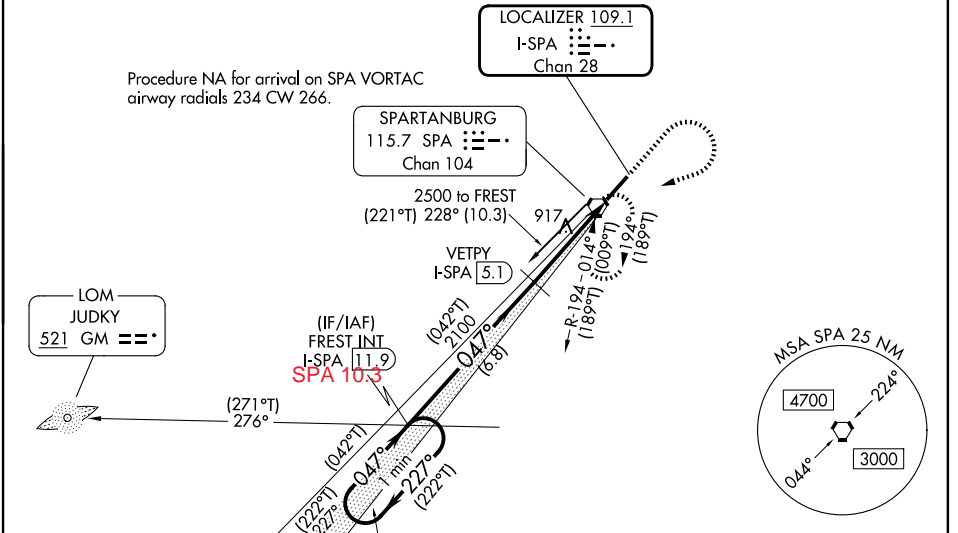
ILS or LOC RWY 5

SPARTANBURG DOWNTOWN MEML/SIMPSON FLD (SPA)

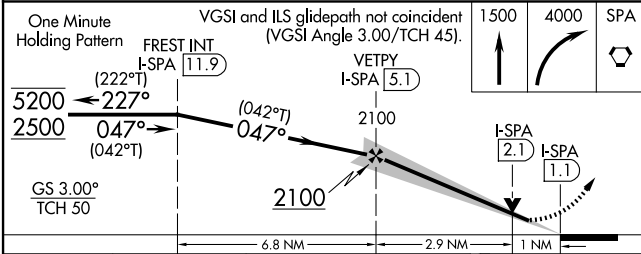
DME required.		MALSR	MISSED APPROACH: Climb to 1500 then climbing right turn to 4000 direct SPA VORTAC and hold, continue climb-in-hold to 4000.
---------------	--	-------	---

AWOS-3 133.925	GREER APP CON * 119.4 350.2	CINC DEL 120.55	UNICOM 123.0 (CTAF)
--------------------------	---------------------------------------	---------------------------	-------------------------------

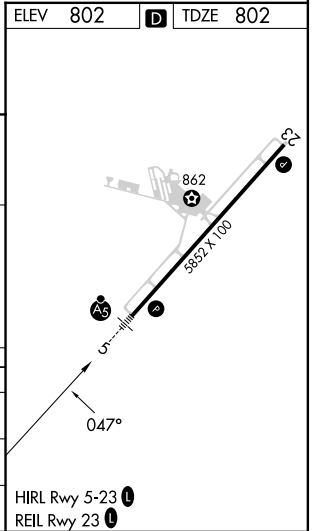
PROTOTYPE-NOT FOR NAVIGATION



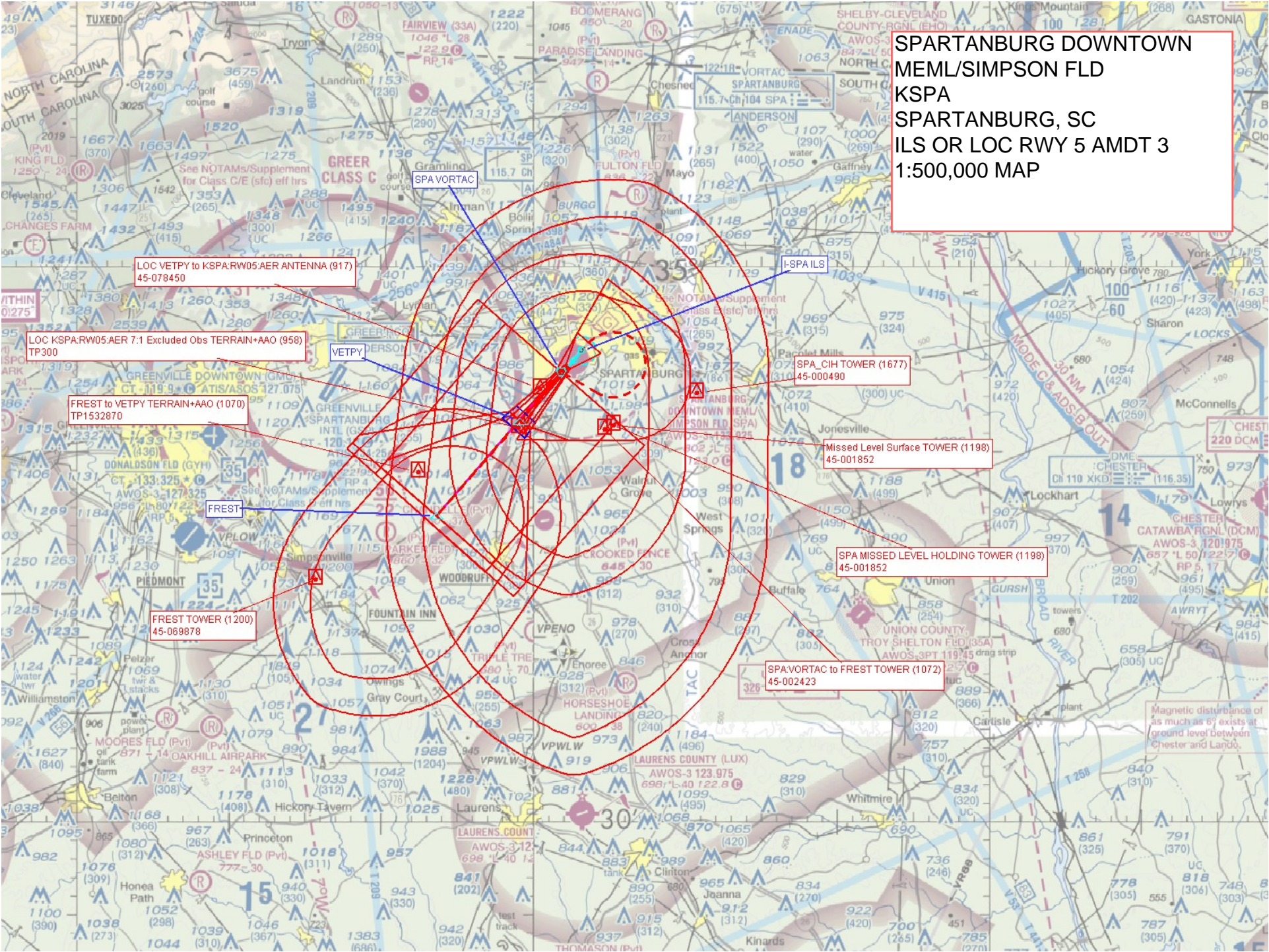
ELEV 802	D	TDZE 802
----------	---	----------



CATEGORY	A	B	C	D
S-ILS 5		1002-3/4	200 (200-3/4)	
S-LOC 5		1160-3/4	358 (400-3/4)	
CIRCLING	1320-1	518 (600-1)	1380-1 1/2 578 (600-1 1/2)	1420-2 618 (700-2)



**SPARTANBURG DOWNTOWN
MEML/SIMPSON FLD
KSPA
SPARTANBURG, SC
ILS OR LOC RWY 5 AMDT 3
1:500,000 MAP**



LOC VETPY to KSPA:RW05:AER ANTENNA (917)
45-078450

LOC KSPA:RW05:AER 7.1 Excluded Obs TERRAIN+AAO (958)
TP300

FREST to VETPY TERRAIN+AAO (1070)
TP1532870

FREST TOWER (1200)
45-069878

SPA_CIH TOWER (1677)
45-000490

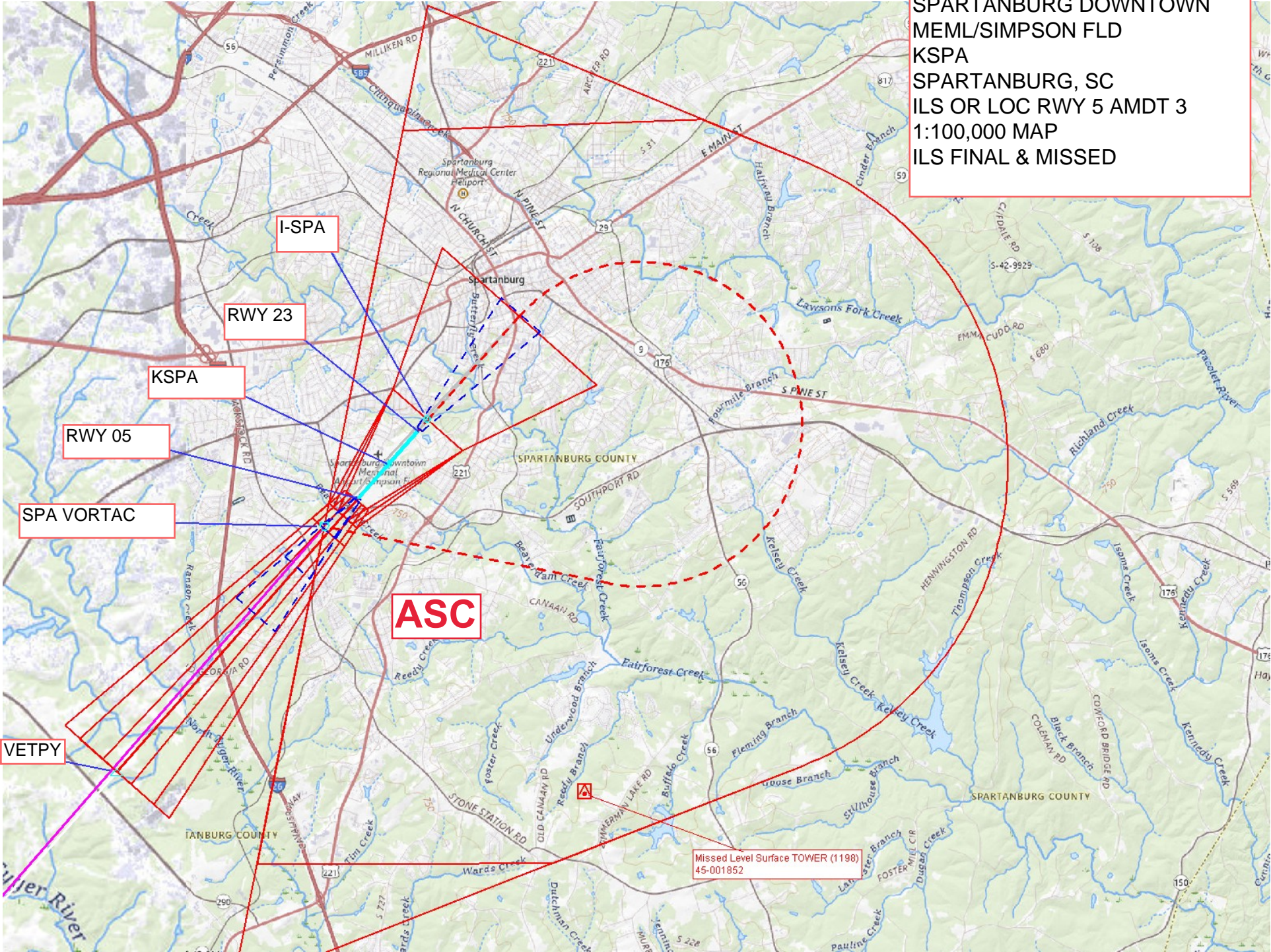
Missed Level Surface TOWER (1198)
45-001852

SPA MISSED LEVEL HOLDING TOWER (1198)
45-001852

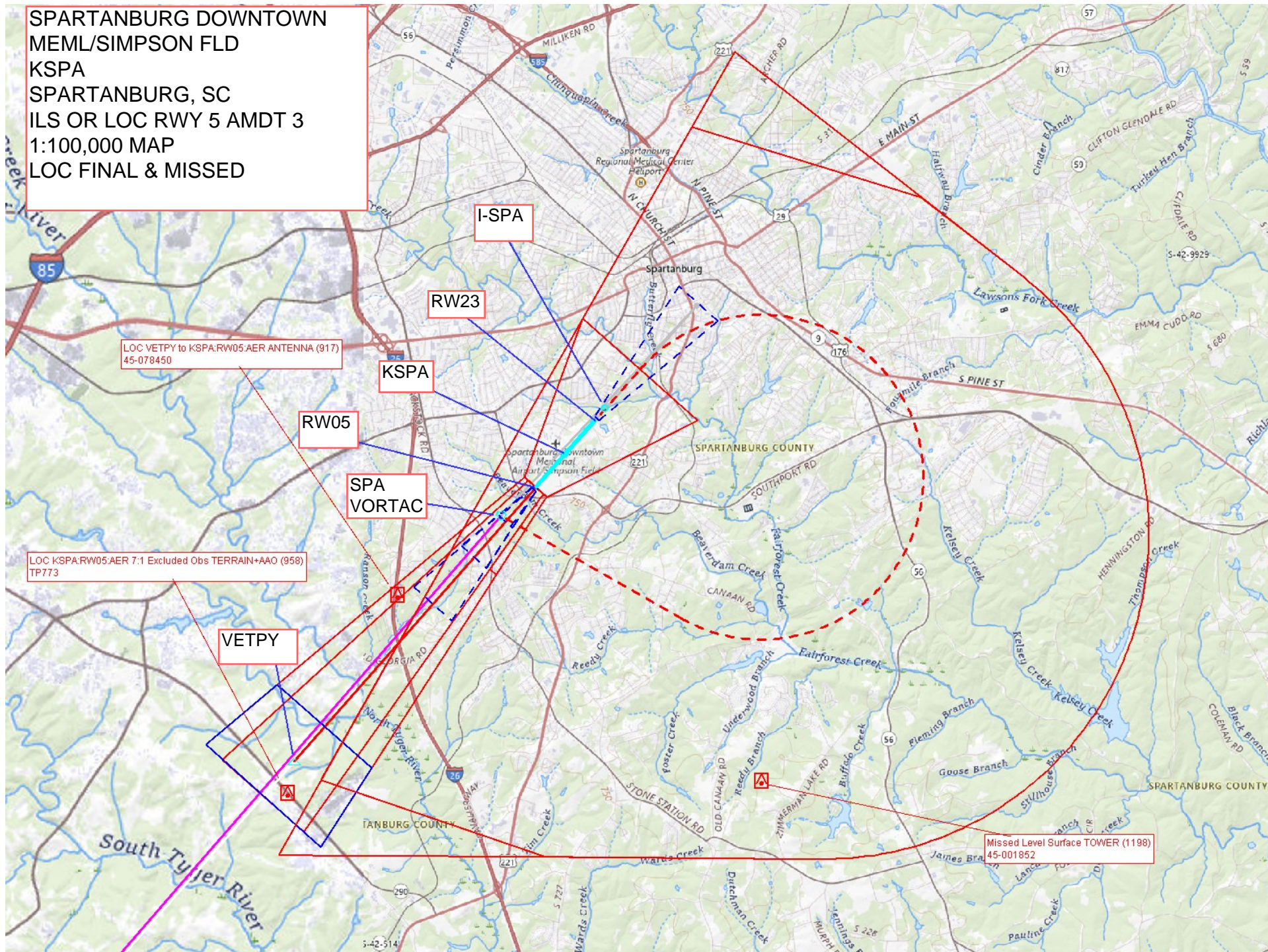
SPA:VORTAC to FREST TOWER (1072)
45-002423

Magnetic disturbance of
as much as 6° exists at
ground level between
Chester and Landow.

SPARTANBURG DOWNTOWN
MEML/SIMPSON FLD
KSPA
SPARTANBURG, SC
ILS OR LOC RWY 5 AMDT 3
1:100,000 MAP
ILS FINAL & MISSED



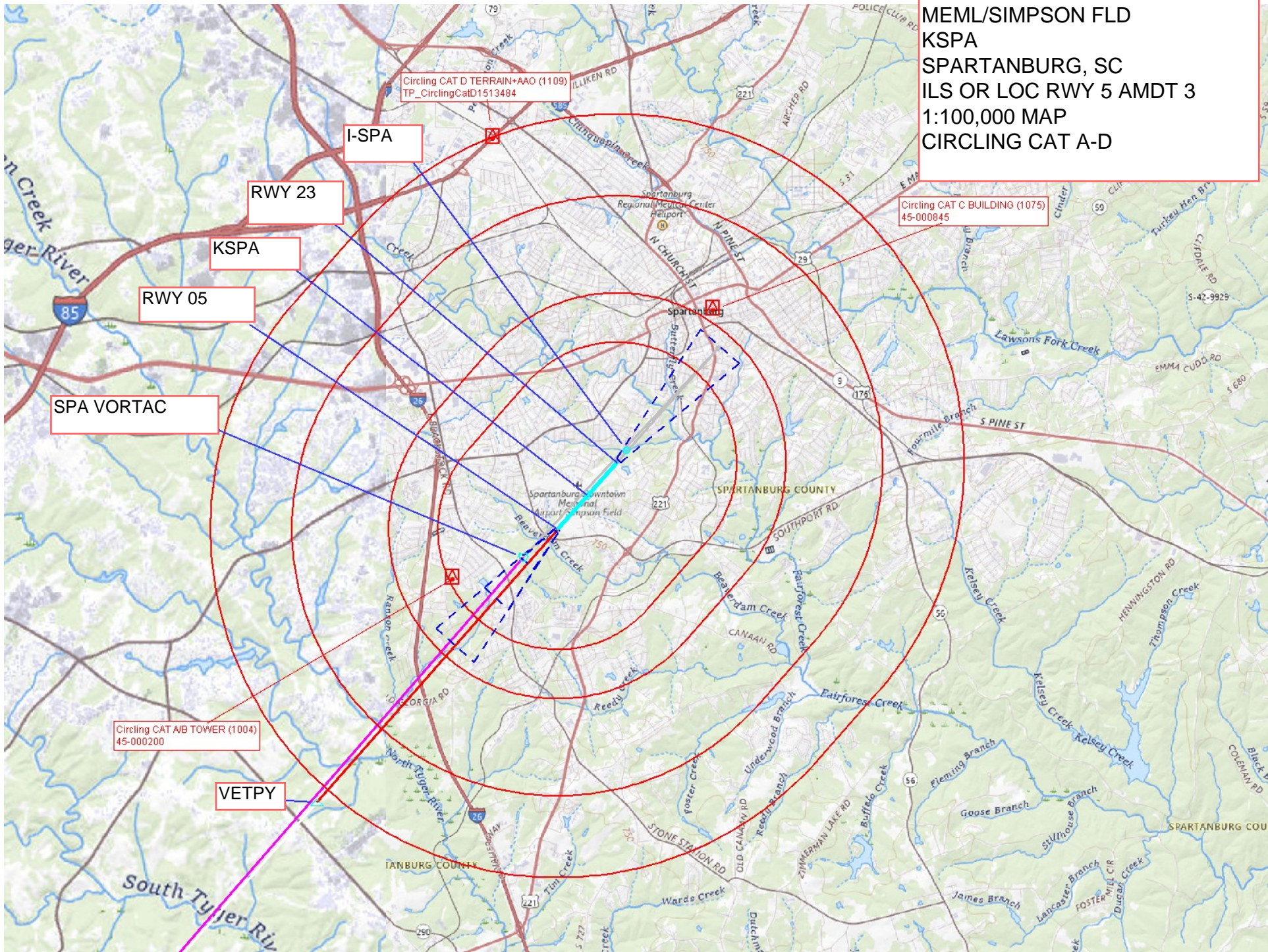
SPARTANBURG DOWNTOWN
MEML/SIMPSON FLD
KSPA
SPARTANBURG, SC
ILS OR LOC RWY 5 AMDT 3
1:100,000 MAP
LOC FINAL & MISSED



LOC VETPY to KSPA/RW05 AER ANTENNA (917)
45-078450

LOC KSPA/RW05 AER 7:1 Excluded Obs TERRAIN+AAO (958)
TP773

Missed Level Surface TOWER (1198)
45-001852



SPARTANBURG DOWNTOWN
MEML/SIMPSON FLD
KSPA
SPARTANBURG, SC
ILS OR LOC RWY 5 AMDT 3
1:100,000 MAP
CIRCLING CAT A-D

Circling CAT D TERRAIN+AAO (1109)
TP_CirclingCatD1513484

Circling CAT C BUILDING (1075)
45-000845

Circling CAT A/B TOWER (1004)
45-000200

I-SPA

RWY 23

KSPA

RWY 05

SPA VORTAC

VETPY