

Flight Procedures Cover Page	Task Action: P-NOTAM	Task Type: IAP	Estimated Chart Date: 05/14/2026	APWS Task ID: B2157E3F24D5434BAACA2DC43A89C8F7	APWS Project ID: 8422898308084E5CA222CA044F21357B
Procedure: RNAV (GPS) RWY 25 ORIG-B		Enroute: NO	Specialist: Johnson, Timothy		Agreement Number:
Airport ID: 02G			Airport City: EAST LIVERPOOL		State: OH
Facility ID:	Facility Type:	Flight Inspection Remark Type:			

Procedure Comments:

Visibility Initiative (Garmin) - Update IAP visibility minimums IAW Order 8260.3, Chapter 3, Section 3-3. Visibility Minimums.

PROCESSED IAW TECHNICAL SUPPORT GROUP (AJF-17) MEMO DATED 07/07/2021, SUBJECT: GUIDANCE FOR PROCEDURAL CHANGES REQUIRING FLIGHT INSPECTION/VALIDATION.

CONTACT: CASEY HILL (405) 954-0624.



OLD

APP CRS	Rwy Idg	3503
249°	TDZE	1160
	Apt Elev	1160

RNAV (GPS) RWY 25

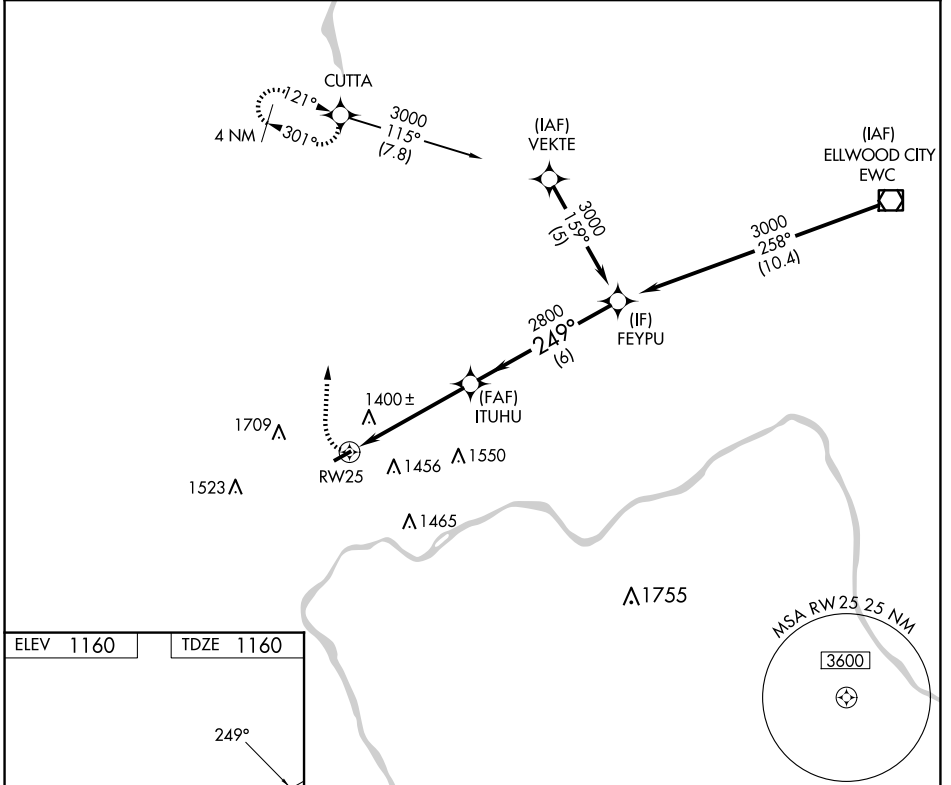
COLUMBIANA COUNTY (Ø2G)

NA DME/DME RNP-0.3 NA. Use Pittsburgh Intl altimeter setting, when not received use Wheeling, WV altimeter setting and increase all MDA 20 feet; increase LNAV Cat C visibility ¼ SM, and Circling Cat A visibility ¼ SM. Rwy 25 helicopter visibility reduction below ¾ SM NA.

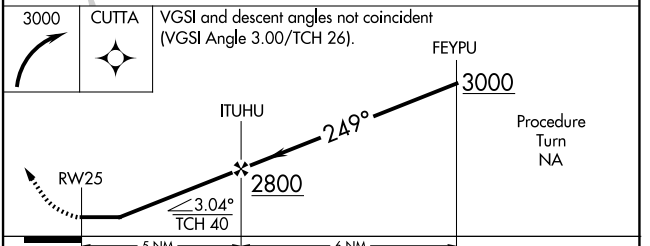
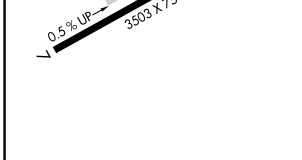
MISSED APPROACH: Climbing right turn to 3000 direct CUTTA and hold.

PITTSBURGH APP CON
124.75 338.2

UNICOM
123.0 (CTAF) Ø



ELEV	1160	TDZE	1160
------	-------------	------	-------------



CATEGORY	A	B	C	D
LNAV MDA	1760-1	600 (600-1)	1760-1½ 600 (600-1½)	NA
CIRCLING	1960-1 800 (800-1)	1960-1¼ 800 (800-1¼)	2080-2¾ 920 (1000-2¾)	NA

REIL Rwy 7-25 **Ø**
MIRL Rwy 7-25 **Ø**

EC-2, 22 JAN 2026 to 19 FEB 2026

EC-2, 22 JAN 2026 to 19 FEB 2026