



Flight Procedures Cover Page	Task Action: P-NOTAM	Task Type: IAP	Estimated Chart Date: 05/14/2026	APWS Task ID: B22787FD1CF94C0184C6732DA39C84FB	APWS Project ID: B16C046F8ABE445BA8C73E06FF997C12
Procedure: VOR OR TACAN-A AMDT 6D		Enroute: NO	Specialist: Burchell, Brandon		Agreement Number:
Airport ID: KSBP			Airport City: SAN LUIS OBISPO		State: CA
Facility ID: MQO	Facility Type: VORTAC	Flight Inspection Remark Type: New FC Slot			
<p>Procedure Comments: P-NOTAM.</p> <p>RAISE CIRCLING CAT C MDA/HAA 1500/1288 AND CAT D TO 1760/1548. REMOVE CHART CIRCLING ICON. Add CIRCLING RWY 25 NA AT NIGHT note to align with the RNAV IAP notes.</p> <p>CANCELS T-NOTAM: 5/8781.</p> <p>CANCELS T-NOTAM: 5/5305.</p> <p>NFCR. FC W/ ILS OR LOC RWY 11 AT KSBP.</p> <p>PROCESSED IAW TECHNICAL SUPPORT GROUP (AJF-17) MEMO DATED 07/07/2021 GUIDANCE FOR PROCEDURAL CHANGES REQUIRING FLIGHT INSPECTION/VALIDATION.</p> <p>POC: KYLE THOMPSON, AJV A33, 405-954-2135.</p>					
					

VORTAC MQO 112.4 Chan 71	APP CRS 084°	Rwy Ldg TDZE Apt Elev	N/A N/A 212
---------------------------------------	------------------------	-----------------------------	--

OLD

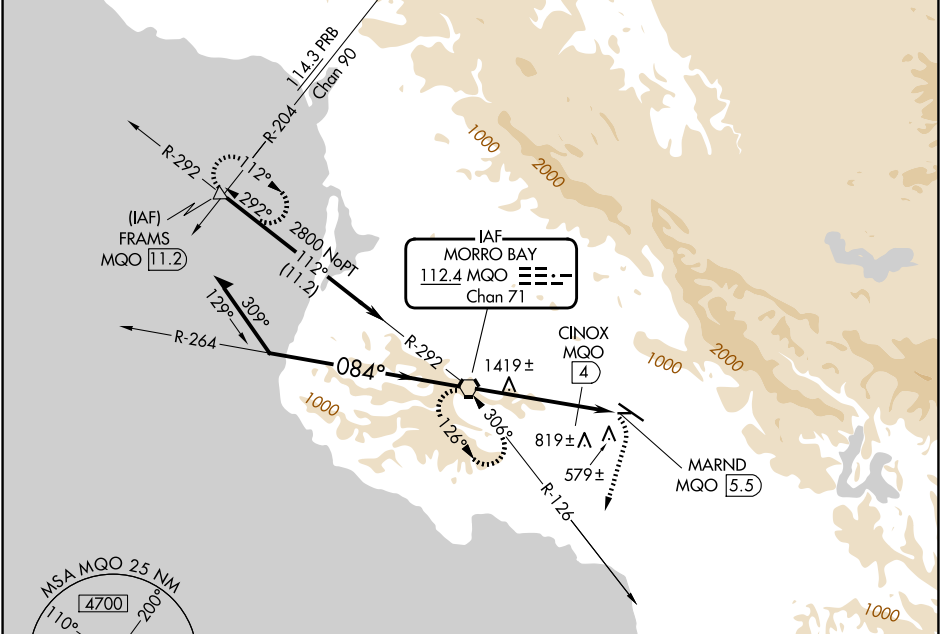
VOR or TACAN-A

SAN LUIS OBISPO COUNTY RGNL (SBP)

⚠ Circling NA north of Rwy 11-29.

MISSED APPROACH: Climbing right turn to 3100 via heading 175° and MQO R-126 to MQO VORTAC and hold. (TACAN Aircraft continue climb to 4000 via MQO R-292 to FRAMS 11.2 DME and hold east, right turns, 292° inbound.)

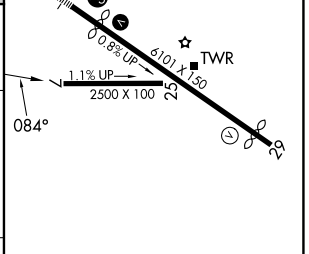
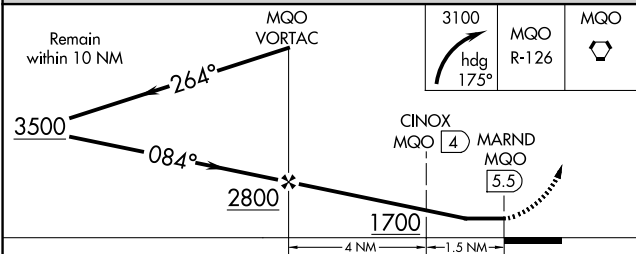
ATIS 120.6	SANTA BARBARA APP CON* 127.725 244.575	SAN LUIS TOWER* 124.0 (CTAF) 379.9	GND CON 121.6	UNICOM 122.95
----------------------	--	---	-------------------------	-------------------------



SW-3, 30 OCT 2025 to 27 NOV 2025

SW-3, 30 OCT 2025 to 27 NOV 2025

ELEV 212	D
----------	----------



CATEGORY	A	B	C	D	HIRL Rwy 11-29 Ⓛ REIL Rwy 29 Ⓛ
CIRCLING	1700-1¼ 1488 (1500-1¼)	1700-1½ 1488 (1500-1½)	1700-3	1488 (1500-3)	
TACAN OR DME MINIMA					
CIRCLING	1120-1¼ 908 (1000-1¼)	1220-1½ 1008 (1100-1½)	1460-3 1248 (1300-3)	1560-3 1348 (1400-3)	FAF to MAP 5.5 NM
	Knots 60	90	120	150	180
	Min:Sec 5:30	3:40	2:45	2:12	1:50